

Price List

DKK

Valid from 01.04.2024



2024-V1

Designed to work

giroflex
by Flokk

Content

General sales and delivery terms	3
General information	5
giroflex 10 Sit-Stand Stool	6
giroflex 313 Swivel Chair	7
giroflex 313 Conference Chair	8
giroflex 313 Spare parts	9
giroflex 40 Swivel Chair	10
giroflex 40 Spare parts	11
giroflex 353 Swivel Chair	12
giroflex 353 Spare parts	14
giroflex 64 Swivel Chair	16
giroflex 64 QUILT Swivel Chair - Special Collection	18
giroflex 64 Executive Chair	19
giroflex 64 Spare parts	21
giroflex 68 Swivel Chair	24
giroflex 68 Spare parts	26
Measurements - Office Range (1)	29
Measurements - Office Range (2)	30
Packaging measurements	31
Standard fabrics	36
Product specific fabrics	44
Extended Fabric & Colour Collection	46

General sales and delivery terms

This document applies for contracted distributors of Giroflex in Denmark (including Faroe Islands and Greenland).

Customer Service

Flokk A/S
Phone: +45 99 50 55 00
E-mail: info-dk@flokk.com
flokk.com

Standard delivery times from factory

(After order confirmation)

Standard fabric colours	15 working days
Extended fabric colours	20-30 working days*
Quick-ship	5-10 working days
On request	On request

Standard / extended colours according to separate Giroflex fabric overviews.

5 - 6 transport days to be added on top of production lead time.

* Provided available at suppliers stock.

Longer delivery times may occur periodically, during holidays and for large orders.

Order entry specification

Please specify the following information when placing an order for Giroflex products:

- Chair model
- Number of chairs
- Fabric/Leather and Colour Code
- Colour of base
- Type of castors or glides
- Delivery date
- Delivery address
- Project no. (if any)

Validity

Valid from 01.04.2024.

Any typographical errors shall not be binding for Flokk and will be subject to correction without liability to the vendor.

Prices

All prices are recommended retail prices in DKK excl. VAT. Quotations are valid for 30 days unless otherwise agreed.

Any typographical errors shall not be binding for Flokk and will be subject to correction without liability to the vendor.

Models or prices subject to alterations, may change without prior notice.

Payment

Subject to local sales agreement. Interest charged for non-payment according to current terms. All goods remain the property of Flokk A/S until payment is made in full.

Conditions of Delivery

Ex Works (Incoterms 2020), including packaging. A 3% transportation & energy cost surcharge on the net order value will be applied to all orders with delivery terms agreed different from Ex Works.

Shipping fee of 5% of the net order value (min. DKK 250) is added on all orders, which is not delivered to addresses used or owned by the distributor.

Time specific delivery on a specific date and time indication costs DKK 5.000 per. order and must be ordered no later than five days before the sending date via Customer Service, Flokk A/S.

Visible transport damage and discrepancies in the number of items received must always be noted on the bill of carriage at the time of receipt and reported to the carrier and Customer Service, Flokk within 7 days after receipt.

Invisible damage (means no damaged packaging) must also be reported in writing to Customer Service, Flokk within 7 days after receipt.

For transport damage you need to take photos and document the damage, before reporting in writing to Customer Service, Flokk.

Please document:

- Photo of Flokk product label (including order no.)
- Photo of damaged goods
- Photo of damaged packaging
- Copy of transport document (if provided)
- Short description of claim

Change/cancellation of orders on chairs and upholsteries

Change/cancellation of orders on chairs or upholstery are possible up until production has begun. Changes made 2 days after receiving the order confirmation, each amended or cancelled order will incur a charge per order (see below).

Once production has started orders cannot be changed. Change of orders within the Quick-ship collection are not possible.

Each amended or cancelled order will incur a charge:

- Amended order (all changes & cancellations) before production start will incur a charge of 500 DKK per order
- Amended order & cancellations after purchasing has started will incur a charge of 750 DKK per order + cost of materials

For further information regarding change/cancellation of orders, please feel free to contact Customer Service, Flokk A/S.

General warranty - terms and conditions

Flokk's warranty covers Giroflex products against material and manufacturing faults and defects from the product's production date. The warranty covers any necessary spare parts. Labour and transport costs are not covered. Unless otherwise specified, the maximum weight for users of chairs is 110 kg. The warranty is conditional on the chair and fabrics/leather undergoing normal cleaning.

5 year warranty for Giroflex products

Flokk provides a 5 year warranty for all Giroflex products (3-years for 24/7 chairs) on construction, material and workmanship of our products, subject to appropriate handling. Wear and tear must be expected from normal use and are not covered by the warranty. The warranty for covering materials, pneumatic parts, castors and glides is limited to 2 years in any case. The information indicated on the label under the chair is determining for the guarantee period.

The warranty excludes COM (Customer's own material), impact damage and torn upholstery materials caused by careless handling, or normal wear and tear to covering materials, castors and glides.

No warranty is provided with regard to the identical colouring of materials and leather in the case of repeat orders, nor for CleanGuard treatments or damage in consequence of self-repairs.

Upholstery

When seated, the foam in the seat pad is compressed, which may cause small wrinkles to occur. This is normal for this type of product. Wrinkles will partially disappear when the chair is not in use.

Leather

Leather is a natural product. Grain, cracks and wrinkles are authentic proof of this material. These typical characteristics will not be accepted as grounds for complaint.

Wood

Wood is also a natural product. Natural features of wood will not be accepted as grounds for complaint.

Maintenance guide

Care of Fabric Upholstery: Regular vacuum cleaning is recommended. Marks and stains should be removed with a proprietary cleaner.

Care of Leather Upholstery: Wipe with a slightly damp cloth and gently rub dry. A good proprietary hide food should be applied at least once a year and more often if the leather is in a dry atmosphere or close to a heat source.

Care of gas stem: Gas stems should be periodically wiped clean with a cloth and general purpose solvent, then a fingertip of light grease applied.

For additional maintenance advice please contact Customer Service, Flokk A/S.

Standard Fabric & Colour Collection

Flokk provides a 5 year warranty for Giroflex chairs upholstered in fabrics/leather from the Giroflex Standard Fabric & Colour Collection when the chair is in normal use for up to 9 hours per day. Flokk provides a 2 year warranty for Giroflex chairs upholstered in fabrics/leather from the Giroflex Standard Fabric & Colour Collection when the chair is in normal use for more than 9 hours per day.

Extended Fabric & Colour Collection

Flokk provides a 5 year warranty for Giroflex chairs upholstered in fabrics/leather from the Giroflex Extended Fabric & Colour Collection when the chair is in normal use for up to 9 hours per day. Some of the fabrics in the Giroflex Extended Fabric & Colour Collection are available with a 3 year warranty for 24 hour use (for use of more than 9 hours per day).

On request fabrics

If the fabrics in the Standard or Extended collections are not what you are looking for, please contact Customer Service, Flokk A/S. When choosing Special or Customer specified fabric/leather the general warranty terms and conditions are still valid, except for the upholstery which will be without any warranty. This does not affect your rights and obligations under local law. Customer specified fabrics/leather can only be used following approval by Flokk. Fabrics and leathers that are not tested on our products, need to have an upholstery test before we can approve it and the order can be registered. Cost (DKK 1.545) for testing will be charged.

The general warranty terms and conditions cover the chair against material and manufacturing faults, but not the upholstery.

Certifications & approvals

Flokk is ISO 9001 accredited. Giroflex chairs are tested in accordance with EN 1335. The German test institute TÜV and Intertek has approved and issued the GS certificate (Geprüfte Sicherheit) for many Giroflex chairs.

The following products are certified with the label GREENGUARD Gold

- giroflex 40
- giroflex 313
- giroflex 64

Please contact our Customer Service for further information.

In January 2024, Giroflex have the following EPD-certified product families, and will continue to expand our certification:

- giroflex 40
- giroflex 64
- giroflex 353 swivel
- giroflex 353 conference

Giroflex is continuously working with quality and sustainability certifications for our products.

Please advice our sustainability pages and product pages on Flokk.com for the latest updates about certifications.

DISCLAIM

Flokk disclaims any responsibility for products that are configured or assembled in a different way than Flokk's official configurations.

That is, as a result of component purchases, special orders or the like.

End of life - Recycling

We perform mono-material separation of all chairs that are no longer usable and pass the individual materials along for processing and recycling.

If you have questions on how to dispose or return your chair after use, please contact Customer Service.

Packaging material - Recycling

We encourage you to ensure proper recycling of your chair and its various components. Please sort and return the packaging material, using your local recycling partners/stations - and follow your local regulations.

If you have questions on how to handle waste packaging material, please inform your contact person within Flokk.

General information

EXTRA COSTS FOR SPECIAL SERVICES

(net. no rebate deductible)

Special metal colours and combinations		DKK
Special metal colours		On request
Combination choice outside given price-list standard	Order fee	500
	Surcharge per chair	100

Delivered cover materials (outside Giroflex collections)		DKK
Supplied customer's own fabric (PG 3)	Order fee fabric	500
	Order fee leather	500
Upholstery test of unknown cover materials	Unique fee	1545

Procurement to DDP supplier (address on request)

GIROFLEX QUICK-SHIP DELIVERY PROGRAM

The following selected chair models and configurations are available in the Quick-ship delivery program.

Delivery time 5-10 working days. (after order entry / transportation days must be added)

Changing / canceling orders from the Quick-ship collection is not possible.

Model		Armrests					Base		Fabric and colour		
	order number	without	fixed	2D plastic, Softpad	4D, plastic, Softpad	4D, aluminium, Softpad	Plastic	Aluminium	Xtreme black EXR009	Gaja black GA60999	Select black SC60999
giroflex 353	353-4029*	x		x	x		x		x	x	x
giroflex 64	64-3078	x				x		x	x	x	x
giroflex 64	64-3578	x				x		x	x	x	x

*Mesh back Runner black - RUN60999

Choice: castors for carpet or hard floors

Please note: to be able to provide this service to all customers, there is a limit of 10 chairs per customer per day.

For orders over 10 chairs, please contact our Customer Service tel: +45 99505500, email: info-dk@flok.com.

Subject to holiday seasons and high production volume.

giroflex 10 Sit-Stand Stool

Standard configuration

Inclination angle 14°

Seat height adjustment 64 - 81 cm

Seat upholstered or integral foam

Column tube black

Foot disc aluminium powder coated in 810 black, 812 pearl-metallic or 813 alu-metallic

Rubber sole for hard and soft floors

Designed by Zemp + Partner Design, update by Paolo Fancelli

Item no	Base model +	Price Group (PG)	①	②	③	④	⑤	Price
10-2020	giroflex 10-2020 sit-stand stool Seat upholstered		2 547	2 569	2 672	2 758	2 924	
10-3020	giroflex 10-3020 sit-stand stool Seat integral foam black							2 494
Accessories/Options/Surcharges:								
	Cone upholstered		1 234	1 246	1 295	1 360	1 441	
CL6003	CleanGuard seat (Only for: 10-2020)							166





option "Cone upholstered"

giroflex 313 Swivel Chair

Standard configuration

Synchronised mechanism Balance Move with fully automatic weight adjustment
 Seat cushion with dual-zone seat profile
 Backrest mesh Runner or upholstered
 Seat height adjustment 39 - 51 cm
 Seat shell, back frame, back upholstery plate in plastic 810 black
 Back and seat support in aluminium 810 black, 812 pearl-metallic, 813 alu-metallic
 5-arm aluminium base in 810 black, 812 pearl-metallic, 813 alu-metallic
 Castors black Ø 65mm, for hard or soft floors, braked unloaded

Certified in accordance to GS EN 1335-1/-2/-3 Type B // GREENGUARD Gold Certification
 German Design Award Winner 2017, Red Dot Award Winner 2017 / Designed by Paolo Fancelli


Item no	Base model +	Price Group (PG)	①	②	③	④	⑤	⑥	⑦	Price
313-4039	giroflex 313-4039 swivel chair Backrest mesh Runner		5 776	5 828	6 061	6 452	6 840	7 364	8 615	
313-4539	giroflex 313-4539 swivel chair Backrest upholstered		6 182	6 237	6 486	6 872	7 284	7 773	9 094	
Accessories/Options/Surcharges:										
AR6005	Armrest fixed , plastic black 810									706
AR6013	Armrest fixed, aluminium, powder coated (810 black, 812 pearl-metallic, 813 alu-metallic), softpad black									1 669
AR6019	Armrest fixed, aluminium polished, softpad black									2 191
FC6019	Seat and back frame aluminium polished									788
LI6014	Column standard, chromium plated									336
LI6045	Special seat height 49-65 cm									336
LI6050	Special seat height 52-69 cm									757
LI6070	Special seat height 57-74 cm									757
LI6090	Special seat height 64-81 cm									840
FR6001	Footring chromium plated, centre piece black, Ø 50 cm									916
FB6019	5-arm aluminium base polished									267
CL6003	CleanGuard seat (Only for: 313-4039)									166
CL6004	CleanGuard back/seat (Only for: 313-4539)									264

- Special seat height 65 cm and above: only with glides or castors braked under load (no surcharge)
- Footring: possible as from special seat height 52-69 cm and above

giroflex 313 Conference Chair

Standard configuration

Synchronised mechanism Balance Move with fully automatic weight adjustment
 Seat cushion with dual-zone seat profile
 Backrest mesh Runner or upholstered
 Seat height 45 cm
 Seat shell, back frame, back upholstery plate in plastic 810 black
 Back and seat support in aluminium 810 black, 812 pearl-metallic, 813 alu-metallic
 4-arm aluminium base in 810 black, 812 pearl-metallic, 813 alu-metallic
 Castors black Ø 65mm, for hard or soft floors, braked unloaded
 Certified in accordance to GS EN 16139
 Designed by Paolo Fancelli

Item no	Base model +	Price Group (PG)	Price Group							Price
			①	②	③	④	⑤	⑥	⑦	
313-4018	giroflex 313-4018 conference chair Backrest mesh Runner		5 511	5 561	5 784	6 196	6 568	7 097	8 303	

313-4518	giroflex 313-4518 conference chair Backrest upholstered		5 917	5 970	6 209	6 605	7 001	7 506	8 782	
----------	--	--	-------	-------	-------	-------	-------	-------	-------	--

Accessories/Options/Surcharges:

AR6005	Armrest fixed , plastic black 810	706
AR6013	Armrest fixed, aluminium, powder coated (810 black, 812 pearl-metallic, 813 alu-metallic), softpad black	1 669
AR6019	Armrest fixed, aluminium polished, softpad black	2 191
FC6019	Seat and back frame aluminium polished	788
LI6105	Column fix, chromium plated	257
LI6101	Column height adjustable	267
LI6106	Column height adjustable, chromium plated	524
LI6102	Column auto-return	349
LI6107	Column auto-return, chromium plated	606
FB6049	4-arm aluminium base polished	267
CA6030	Plastic glides , metal shaft powder coated	369
CA6032	Plastic glides, metal shaft chromium-plated	604
CA6031	Glides with felt , metal shaft powder coated	369
CA6033	Glides with felt, metal shaft chromium-plated	604
CL6003	CleanGuard seat (Only for: 313-4018)	166
CL6004	CleanGuard back/seat (Only for: 313-4518)	264

- Option "auto return" requires glides instead of castors

giroflex 313 | Spare parts

We keep a large assortment of original spare parts in stock to expand the longevity of our products. If you need more information, please contact Customer Service .

The service department performs different types of Giroflex chair repairs, and upgrades with precision.

Get in touch, so we can find out how we can help repair current models or make older Giroflex chairs functional again with original spare parts .

Item no	Castors	Price
123329810	Castor 65/18 Hard Self-Brake under load, for higher seats – Price per unit	152
123330810	Castor 65/18 SOFT Self-Brake under load, for higher seats – Price per unit	152
Z12112092	Castor. FI11 65 Hard for Soft floors, braking when unloaded – Price per unit	25

Item no	Glides	Price
115142810	Glide to swivel chair – Price per unit	119
122287810	Glide to swivel chair with felt – Price per unit	126

Item no	Bases	Price
223488700	Aluminium BASE 7530 POLISHED	932
223488810	Aluminium base 7530 Powder coated 313, black	637
223488812	Aluminium BASE 7530 Powder coated 313, pearl-metallic	649
223488813	Aluminium BASE 7530 Powder coated 313, aluminium metallic	630

Item no	Columns/Gas lifts	Price
822162810	Column/Gas lift Comfort, for seat height 39-51cm, black	422
823664700	Column/Gas lift Comfort, Chromed, for seat height 39-51cm, chrome	439

Item no	Armrests	Price
423463810	ARMREST RIGHT giroflex 313-4039	254
423462810	ARMREST LEFT giroflex 313-4039	254

Item no	Armrest-parts	Price
223504810	Insert M6 Long giroflex 313-4039	42
223505	Insert M6 Short, giroflex 313-4039	42
915144	Torx Pan Head Screw M6X20	9

Item no	Seat and back upholstered parts	①	②	③	④	⑤	⑥	⑦	Price
S31340	SEAT CUSHION, giroflex313-4039	775	782	813	1165	1235	2122	2483	
R31345	Back cushion, giroflex 313-4539	1382	1394	1450	1810	1918	3206	3751	
R313-4039	Mesh back, Complete Part								1014

Item no	Accessories	Price
815712710	Footring, 500 MM	1063


giroflex 40 Swivel Chair

Standard configuration

Synchronised mechanism
 Seat cushion with dual-zone seat profile
 Backrest mesh Runner
 Seat height adjustment 37-51 cm
 Seat- and backrest-support aluminium powder coated in 810 black
 Seat depth adjustment 6 cm
 Seat inclination angle 0°/-3°
 Lumbar support, height adjustable
 5-arm plastic base in 810 black
 Castors black Ø 50 mm, for hard or soft floors, braked unloaded

Certified in accordance to GS EN 1335-1/-2/-3 // GREENGUARD Gold Certification
 Designed by Ito Design

Please note: Armrests cannot be added ore removed in a later stage.

Item no	Base model +	Price Group (PG)	Price Group							Price
			①	②	③	④	⑤	⑥	⑦	
40-4049	giroflex 40-4049		6 138	6 194	6 442	6 762	7 168	8 250	9 653	

Accessories/Options/Surcharges:

7ARMR022	Armrest 3D, black									2 003
	Headrest adjustable		700	706	734	771	817	941	1 101	
7ALCO006	Seat- and back-frame aluminium polished									240
7BASC013	5-arm aluminium base black									482
7BASC015	5-arm aluminium base polished									401
7TCAS028	Castors 65 mm for soft and hard floors									125
7TCAS024	Plastic glides									369
7TCAS025	Plastic glides with felt									369

giroflex 40 | Spare parts

We keep a large assortment of original spare parts in stock to expand the longevity of our products. If you need more information, please contact Customer Service .

The service department performs different types of Giroflex chair repairs, and upgrades with precision.

Get in touch, so we can find out how we can help repair current models or make older Giroflex chairs functional again with original spare parts .

Item no	Castors	Price
115502810	Dual wheel castor. 50/18 Hard brake for soft floors - Price per unit	119
115503810	Dual Wheel Castor 50/18 Soft brake for hard floors.Brake when unloaded - Price per unit	119
Z12112092	Castor. FI11 65 Hard for Soft floors, braking when unloaded - Price per unit	25

Item no	Glides	Price
115142810	Glide to swivel chair - Price per unit	119
122287810	Glide to swivel chair with felt - Price per unit	126

Item no	Bases	Price
PBC431000009005	Base, Aluminium, black, giroflex 40	794
Z03112310	Base, Aluminium, Polished,	706
Z03112222	Base, Plastic, black	216

Item no	Columns/Gas lifts	Price
Z03112421	Gaslift Black, giroflex 40, 39-51cm black	114

Item no	Mechanism parts	Price
Z05111450	Screw for connecting backrest to Mechanism	5
Z03113361	Mechanism, black LP26	2047
Z04132849	Tension Lever, black, giroflex 40	30

Item no	Seat and back upholstered parts	Price
S40-4049	Seat, Mechanism + seat cushion preassembled.	3492
R40-4049	Backrest, giroflex 40	3251

Item no	Accessories	①	②	③	④	⑤	⑥	⑦	Price
Z12112258	Headrest Adaptor, giroflex 40								22
Z11111695	Headrest Cover, giroflex 40								12
KST40-4049	Headrest. Complete, giroflex 40	700	706	734	771	817	941	1101	

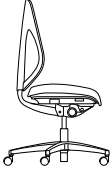
giroflex 353 Swivel Chair

Standard configuration

Synchronised mechanism Automatic Move
 Seat cushion with dual-zone seat profile
 Backrest mesh Runner or upholstered
 Seat height adjustment 39-51 cm
 Seat shell, back frame, back upholstery plate in plastic 810 black
 Seat depth adjustment 6 cm
 Backrest height adjustment 6 cm
 5-arm plastic base in 810 black
 Castors black Ø 50 mm, for hard or soft floors, braked unloaded

Certified in accordance to GS EN 1335-1/-2/-3

Designed by Paolo Fancelli

Item no	Base model +	Price Group (PG)	Price Group							Price
			①	②	③	④	⑤	⑥	⑦	
353-4029	giroflex 353-4029 swivel chair Backrest mesh Runner		3 957	3 993	4 152	4 628	4 906	5 573	6 520	

353-4529	giroflex 353-4529 swivel chair Backrest upholstered		4 386	4 426	4 604	5 686	6 027	7 569	8 855	
----------	--	---	-------	-------	-------	-------	-------	-------	-------	--

Accessories/Options/Surcharges:

AR6005	Armrest fixed	512
AR6022	Armrest 2D, plastic support black, with softpad	831
AR6040	Armrest 4D, plastic support black, with softpad	1 097
AR6042	Armrest 4D, aluminium support polished, with softpad	1 650
AR6045	Armrest 4D-NPR, plastic support, with softpad	1 434
HR6001	Headrest adjustable fabric / skai@Palma	983
HR6002	Headrest adjustable mesh Runner (Only for: 353-4029)	983
AE6001	Coat hanger powder coated 810 black	716
SE6001	Seat 3D Move	819
ME6002	Seat tilt adjustable (forward tilt 4°)	391
LS6001	Lumbar support depth adjustable (Only for: 353-4529)	338
LI6012	Comfort column on standard seat height 39-51 cm	185
LI6025	Special seat height 41-55 cm	303
LI6035	Special seat height 46-62 cm	303
LI6045	Special seat height 49-65 cm	303
LI6060	Special seat height 55-72 cm	683

Accessories/Options/Surcharges:

LI6080	Special seat height 62-79 cm	840
FR6001	Footring chromium plated, centre piece black, Ø 50 cm	916
FB6010	5-arm aluminium base 810 black, 812 pearl-metallic, 813 alu-metallic or polished	369
CA6012	Castors black, 65 mm, for hard or soft floors, braked unloaded	125
CL6003	CleanGuard seat (Only for: 353-4029)	166
CL6004	CleanGuard back/seat (Only for: 353-4529)	264

- Special seat height: requires an aluminium footbase. 65 cm and above only with glides or castors braked under load (no surcharge)
- Footring: possible as from special seat height 49-65 cm and above

giroflex 353 | Spare parts

We keep a large assortment of original spare parts in stock to expand the longevity of our products. If you need more information, please contact Customer Service .

The service department performs different types of Giroflex chair repairs, and upgrades with precision.

Get in touch, so we can find out how we can help repair current models or make older Giroflex chairs functional again with original spare parts .

Item no	Castors	Price
115502810	Dual wheel castor. 50/18 Hard brake for soft floors – Price per unit	119
115503810	Dual Wheel Castor 50/18 Soft brake for hard floors.Brake when unloaded – Price per unit	119
123327810	Castor 50/18 Hard Self-Brake under load, for higher seats – Price per unit	145
123328810	Castor 50/18 SOFT Self-Brake under load, for higher seats – Price per unit	145
123329810	Castor 65/18 Hard Self-Brake under load, for higher seats – Price per unit	152
123330810	Castor 65/18 SOFT Self-Brake under load, for higher seats – Price per unit	152
Z12112092	Castor. FI11 65 Hard for Soft floors, braking when unloaded – Price per unit	25

Item no	Glides	Price
115142810	Glide to swivel chair – Price per unit	119
122287810	Glide to swivel chair with felt – Price per unit	126

Item no	Bases	Price
422614810	Plastic base 7130, Black	474
222615700	Aluminium Base 7030 Polished	1042
222615810	Aluminium Base 7030 Powder-coated, Black	474
222615812	Aluminium Base 7030 Powder-coated, Pearl metallic	1042
222615813	Aluminium Base 7030 Powder-coated, Aluminum metallic	1022

Item no	Columns/Gas lifts	Price
821050810	Column 34, 39-51cm, black	254
823017810	Column 34 Comfort, 39-51cm, black with cushion.	422
813877810	Column 22, special seat height 46-62cm	719

Item no	Mechanisms	Price
722621810	MECHANISM 520 Complete, giroflex 353	1797
722622810	MECHANISM 521 Complete, with negative tilt, giroflex 353	1392

Item no	Armrests	Price
622722810	Armrest pair.Fixed, Plastic.Structured, giroflex 353	642
622652810	2D-Armrest pair, in plastic, with Softpad	887
622728810	4D-Armrest pair, in plastic, with Softpad	1029
622656700	4D-Armrest pair, in Aluminium, with Softpad	1181
622658810	4D-Armrest pair in plastic, with Softpad. NPR standard.	1258

Item no	Armrest-sets	Price
624486810	2D-Armrest set, plastic Softpad, giroflex 353	1 116
624487810	4D-Armrest set, plastic Softpad, giroflex 353	1 261
624488700	4D-Armrest set, Aluminium Softpad, giroflex 353	1 414

Item no	Armrest-parts	Price
923792	Eccentric lever M8X49.5	60
923814	Eccentric lever, 4D armrest, Aluminium Arm support.M8X42	60
923165	Plastic Thread-SCREW 6X20	9
224047	Hex nut, size SW17 M8	9
222662	ARMREST BRIDGE, giroflex 353-4029	85
422862810	ADAPTER for fixed ARMREST, giroflex 353	25

Item no	Seat and back plastic parts	Price
422617810	Seat shell, giroflex 353-4029	228
624276810	Backrest Preassembled, giroflex 353-40/4529	785

Item no	Seat and back upholstered parts	①	②	③	④	⑤	⑥	⑦	Price
S35301	Seat cushion, giroflex 353-40/4529	752	759	1 020	1 131	1 199	2 060	2 410	
S35303	Seat cushion, giroflex 353-4029 3D	2 509	2 531	2 632	2 764	2 930	3 398	3 976	
R35301	Back cushion, giroflex 353-4529	1 104	1 114	1 158	1 531	1 623	2 405	2 813	
R35302	Back cushion with Lumbar support, giroflex 353-45	1 191	1 201	1 250	1 313	1 391	1 615	1 888	
R353-4029	Backrest Preassembled, giroflex 353-4029								932

Item no	Accessories	①	②	③	④	⑤	⑥	⑦	Price
222683810	Coat Hanger, without headrest, powder coated, giroflex 353								464
222684810	Coat Hanger, with Headrest, powder coated, giroflex 353								505
NP3533	headrest.3D, Clean room, giroflex 353-4029								269
NP3531	Headrest cushion, giroflex 353	353	353	353	353	353	353	353	
KST353-4029	Headrest Complete, giroflex 353-4029	1 180	1 191	1 239	1 301	1 379	1 600	1 600	
422673810	Cover for Headrest, giroflex 353								42
622670810	Headrest set without pillow, giroflex 353								464
815712710	Footring, 500 MM								1 063



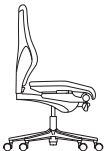
giroflex 64 Swivel Chair

Standard configuration

Synchronised mechanism Organicmove
 Seat cushion with dual-zone seat profile
 Backrest upholstered
 Seat- and backshell in plastic 810 black
 Mechanism 810 black, 812 pearl-metallic, 813 alu-metallic
 Seat height adjustment 40-52 cm
 Seat depth adjustment 2.5 cm
 Backrest height adjustment 7 cm
 5-arm aluminium base in 810 black, 812 pearl-metallic, 813 alu-metallic
 Castors black Ø 50 mm for hard or soft floors, braked unloaded

Certified in accordance to GS EN 1335-1/-2/-3

Designed by Walser Design / Paolo Fancelli

Item no	Base model +	Price Group (PG)	①	②	③	④	⑤	⑥	⑦	Price
64-3078	giroflex 64-3078 swivel chair Standard seat width 45 cm Low back height 47-54 cm		6 333	6 391	6 646	7 427	7 873	8 450	9 886	
64-3578	giroflex 64-3578 swivel chair Standard seat width 45 cm Medium back height 55-62 cm		7 188	7 253	7 543	8 554	9 067	9 809	11 477	
64-4578	giroflex 64-4578 swivel chair Medium seat width 48.5 cm Medium back height 55-62 cm		7 603	7 672	7 979	8 982	9 521	10 242	11 982	
Accessories/Options/Surcharges:										
	Upholstered backshell (Only for: 64-3078)		685	692	719	755	801	929	1 066	
	Upholstered backrest (Only for: 64-3578, 64-4578)		691	697	725	761	806	935	1 093	
AR6005	Armrest fixed									871
AR6020	Armrest 1D, steel support									1 383
AR6030	Armrest 4D, aluminium support powder coated (810 black, 812 pearl-metallic, 813 alu-metallic), with softpad									1 609
AR6039	Armrest 4D, aluminium support polished, with softpad									1 988
AR6055	Armrest 4D-NPR, aluminium support black, with softpad									1 794
AT6001	Armrest pad fabric									511
AT6002	Armrest pad leather									737

Accessories/Options/Surcharges:

CMF	Comfort upholstery	882
AE6010	Coat hanger powder coated 810 black, 812 pearl-metallic or 813 alu-metallic (Only for: 64-3578, 64-4578)	635
LS6001	Lumbar support depth adjustable	575
ME6003	Increased back tilt resistance	994
SD6002	Seat depth adjustment 5 cm (Only for: 64-4578)	235
PU6000	Push rod cover	125
LI6030	Special seat height 43-59 cm	303
LI6035	Special seat height 46-62 cm	303
LI6050	Special seat height 52-69 cm	683
LI6075	Special seat height 59-76 cm	840
LI6095	Special seat height 66-83 cm	840
FR6001	Footring chromium plated, centre piece black, Ø 50 cm	916
FB6019	5-arm aluminium base polished	267
CA6012	Castors black, 65 mm, for hard or soft floors, braked unloaded	125
CA6014	Castors chromium plated, 65 mm, for hard or soft floors, braked unloaded	349
CL6004	CleanGuard back/seat	264
CL6005	CleanGuard back/seat/upolstered backshell	409


- skai®Palma and leather Natura: only in combination with option "comfort upholstery"
- Option "armrest pad fabric/leather": available for 1D and 4D armrests
- Special seat height 65 cm and above: only with glides or castors braked under load (no surcharge)
- Footring: possible as from special seat height 52-69 cm and above

giroflex 64 QUILT Swivel Chair - Special Collection

Standard configuration

Synchronised mechanism Organicmove
 Seat cushion with dual-zone seat profile
 Backrest upholstered
 Comfort upholstery
 Seat- and backshell in plastic 810 black
 Mechanism 810 black, 812 pearl-metallic, 813 alu-metallic
 Seat height adjustment 40 - 52 cm
 Seat depth adjustment 2.5 cm
 Backrest height adjustment 7 cm
 5-arm aluminium base in 810 black, 812 pearl-metallic, 813 alu-metallic
 Castors black Ø 50 mm for hard or soft floors, braked unloaded

Certified in accordance to GS EN 1335-1/-2/-3
 Designed by Walser Design / Paolo Fancelli

Item no	Base model +	Price Group (PG)	Price
64-3578-QUI	giroflex 64-3578-QUI swivel chair Standard seat width 45 cm Medium back height 55 - 62 cm		8516

Accessories/Options/Surcharges:

AR6005	Armrest fixed	871
AR6030	Armrest 4D, aluminium support powder coated (810 black, 812 pearl-metallic, 813 alu-metallic), with softpad	1609
AR6039	Armrest 4D, aluminium support polished, with softpad	1988
AR6055	Armrest 4D-NPR, aluminium support black, with softpad	1794
AE6010	Coat hanger powder coated 810 black, 812 pearl-metallic or 813 alu-metallic	635
LS6001	Lumbar support depth adjustable	86
ME6003	Increased back tilt resistance	994
PU6000	Push rod cover	125
LI6030	Special seat height 43-59 cm	303
LI6035	Special seat height 46-62 cm	303
LI6050	Special seat height 52-69 cm	683
LI6075	Special seat height 59-76 cm	840
LI6095	Special seat height 66-83 cm	840
FR6001	Footring chromium plated, centre piece black, Ø 50 cm	916
FB6019	5-arm aluminium base polished	267
CA6012	Castors black, 65 mm, for hard or soft floors, braked unloaded	125

- Special seat height 65 cm and above: only with glides or castors braked under load (no surcharge)
- Footring: possible as from special seat height 52 -69 cm and above




giroflex 64 Executive Chair

Standard configuration

Synchronised mechanism Organicmove
 Seat cushion with dual-zone seat profile
 Backrest upholstered
 Comfort upholstery
 Seat- and backshell in plastic 810 black
 Mechanism 810 black, 812 pearl-metallic, 813 alu-metallic
 Fixed armrest plastic 810 black with aluminium support in 810 black, 812 pearl-metallic, 813 alu-metallic
 Seat height adjustment 40 - 52 cm
 Seat depth adjustment 2.5 cm
 Backrest height adjustment 7 cm
 Push rod covering
 5-arm aluminium base in 810 black, 812 pearl-metallic, 813 alu-metallic
 Castors black Ø 50 mm for hard and soft floors, braked unloaded

Certified in accordance to GS EN 1335-1/-2/-3

Designed by Walser Design / Paolo Fancelli

Item no	Base model +	Price Group (PG)	Price Group							Price
			①	②	③	④	⑤	⑥	⑦	
64-9278	giroflex 64-9278 executive chair Wide seat width 51 cm High back height 60 - 67 cm		13 833	13 959	14 517	15 692	16 633	17 115	20 025	
64-9778	giroflex 64-9778 executive chair Wide seat width 51 cm High back height 60 - 67 cm Fixed headrest		15 276	15 415	16 032	17 146	18 175	18 771	21 962	
64-9878	giroflex 64-9878 executive chair Wide seat width 51 cm High back height 60 - 67 cm Height adjustable headrest		16 544	16 695	17 362	18 425	19 530	20 073	23 486	
Accessories/Options/Surcharges:										
	Upholstered backshell		690	696	724	760	805	934	1 092	
AR6019	Armrest fixed, aluminium polished, softpad black									381
AR6033	Armrest 4D, aluminium support powder coated (810 black, 812 pearl-metallic, 813 alu-metallic), with softpad									142
AR6039	Armrest 4D, aluminium support polished, with softpad									522
AR6055	Armrest 4D-NPR, aluminium support black, with softpad									328
AT6001	Armrest pad fabric									737

Accessories/Options/Surcharges:

AT6002	Armrest pad leather	994
AE6010	Coat hanger powder coated 810 black, 812 pearl-metallic or 813 alu-metallic	635
LS6001	Lumbar support depth adjustable	575
ME6003	Increased back tilt resistance	994
ME6019	Mechanism polished	2459
LI6030	Special seat height 43-59 cm	303
LI6035	Special seat height 46-62 cm	303
LI6050	Special seat height 52-69 cm	683
LI6075	Special seat height 59-76 cm	840
LI6095	Special seat height 66-83 cm	840
FR6001	Footring chromium plated, centre piece black, Ø 50 cm	916
FB6019	5-arm aluminium base polished	267
CA6012	Castors black, 65 mm, for hard or soft floors, braked unloaded	125
CL6004	CleanGuard back/seat	264
CL6005	CleanGuard back/seat/upolstered backshell	409

- Special seat height 65 cm and above: only with glides or castors braked under load (no surcharge)
- Footring: possible as from special seat height 52 - 69 cm and above

giroflex 64 | Spare parts

We keep a large assortment of original spare parts in stock to expand the longevity of our products. If you need more information, please contact Customer Service .

The service department performs different types of Giroflex chair repairs, and upgrades with precision.

Get in touch, so we can find out how we can help repair current models or make older Giroflex chairs functional again with original spare parts .

Item no	Castors	Price
115502810	Dual wheel castor. 50/18 Hard brake for soft floors – Price per unit	119
115503810	Dual Wheel Castor 50/18 Soft brake for hard floors.Brake when unloaded – Price per unit	119
121469810	Dual wheel castor 65/18 Dual wheel castor 65/18 – Price per unitwith brake, Hard for soft floors. Brake when unloaded	134
121470810	Dual wheel castor 65/18 with brake, Soft for hard floors. Brake when unloaded– Price per unit	134

Item no	Glides	Price
115142810	Glide to swivel chair – Price per unit	119
122287810	Glide to swivel chair with felt – Price per unit	126

Item no	Bases	Price
213580700	Aluminium Base 7830.1 Polished	838
213580810	Aluminium BASE 7830.1 Powder-coated, black	625
213580812	Aluminium BASE 7830.1 Powder-coated, pearl-metallic	608
213580813	Aluminium BASE 7830.1 Powder-coated, aluminium metallic	625

Item no	Columns/Gas lifts	Price
823265810	Column 16, black, Standard seat height 40-51cm	422
823265700	Column 16, chromed, Standard seat height 40-51cm	524
813877810	Column 22, special seat height 46-62cm	719
812625810	Column 18, special seat height 52-69cm	860

Item no	Mechanisms	Price
713317810	Mechanism 200, black	3999
713317812	Mechanism 200, pearl-metallic	3999
713317813	Mechanism 200, aluminium metallic	3999
713317700	Mechanism 200, polished aluminum	7062
724426810	Mechanism 200 lumbar support, black	1116
724426812	Mechanism 200 lumbar support, pearl-metallic	1116
724426813	Mechanism 200 lumbar support, aluminium metallic	1118
724426700	Mechanism 200 lumbar support, polished aluminum	1116

Item no	Mechanism parts	Price
713322	Handle Right, tilt lock. Preassembled for mechanism. 200	95
713321	Handle Left,height adjustment. Preassembled for mechanism. 200	95
223352	Tension Lever, 200	152

Item no	Mechanism parts	Price
413103810	Turning knob, mechanism 200	34
414103810	Set of plastic Telescope-cover for gas lift, giroflex 64 and 60	169

Item no	Armrests	Price
413137810	Fixed armrest Left, giroflex 64-30/3578	505
413138810	Fixed armrest Right, giroflex 64-30/3578	505
614202810	4D-Armrest, Left Preassembled, black	919
614202812	4D-Armrest, Left Preassembled, pearl-metallic	919
614202813	4D-Armrest, Left Preassembled, aluminium metallic	919
614202700	4D-Armrest, Left Preassembled, polished aluminum	1129
614203810	4D-armrest, right preassembled, black	919
614203812	4D-armrest, right preassembled, pearl-metallic	919
614203813	4D-armrest, right preassembled, aluminium metallic	919
614203700	4D-armrest, right preassembled, polished aluminum	1129
620618810	4D-NPR standard, armrest right	675
213399810	Armrest Body, Left. giroflex 64-92/97, black	1014
213399812	Armrest Body, Left. giroflex 64-92/97, pearl-metallic	1014
213399813	Armrest Body, Left. giroflex 64-92/97, aluminium metallic	1014
213399700	Armrest Body, Left. giroflex 64-92/97, polished aluminum	1392
213400810	Armrest.Body, Right. giroflex 64-92/97, black	1801
213400812	Armrest.Body, Right. giroflex 64-92/97, pearl-metallic	1014
213400813	Armrest.Body, Right. giroflex 64-92/97, aluminium metallic	1014
213400700	Armrest.Body, Right. giroflex 64-92/97, polished aluminum	1392

Item no	Armrest-sets	Price
614131810	1D-Armrest set assembled for installation, giroflex 64, black	1579
614131812	1D-Armrest set assembled for installation, giroflex 64, pearl-metallic	1579
614131813	1D-Armrest set assembled for installation, giroflex 64, aluminium metallic	1579
624439810	4D-Armrest set assembled for installation with bridge, giroflex 64, black	2124
624439812	4D-Armrest set assembled for installation with bridge, giroflex 64, pearl-metallic	2124
624439813	4D-Armrest set assembled for installation with bridge, giroflex 64, aluminium metallic	2124
624439700	4D-Armrest set assembled for installation with bridge, giroflex 64, polished aluminum	2548
624441810	4D-NPR preassembled 64 armrest set, black	3019

Item no	Armrest-parts	Price
413204810	Armrest Top for 1D, giroflex 64-30/3578	95
413737810	Armpad with Foamed Top for 4D-Armrest, giroflex 64-30/3578	169
413401810	Armrest Top giroflex 64-92/97	1049

Item no	Seat and back plastic parts	Price
413127810	Seat shell, giroflex 64-30/3578	220

Item no	Seat and back plastic parts	Price
413388810	Seat shell giroflex 64-45/9278	270
413128810	Back shell, giroflex 64-3078	312
413129810	Back shell, giroflex 64-35/4578	371
413389810	Back shell, giroflex 60 and 64-92/9778	785
624173810	Back shell with Lumbar function, giroflex 64-3078	760
624174810	Back shell with Lumbar function, Preassembled, giroflex 64-35/4578	760
624175810	Back shell with Lumbar function, giroflex 60 and 64-92/9778	1181

Item no	Seat and back upholstered parts	①	②	③	④	⑤	⑥	⑦	Price
S64301	Seat Cushion, giroflex 64-30/3578	1 032	1 041	1 082	1 571	1 666	1 932	2 260	
S64321	Seat Cushion, giroflex 64-30/3578 CMF	1 362	1 375	1 429	1 926	2 041	2 622	3 068	
S64401	Seat Cushion, giroflex 64-40/4578	1 091	1 101	1 272	1 597	1 693	1 964	2 298	
S64421	Seat Cushion, giroflex 64-4578 CMF	1 474	1 488	1 548	2 040	2 162	2 831	3 312	
S64521	Seat Cushion, giroflex 64-92/9778	1 681	1 697	1 765	2 591	2 746	3 185	3 727	
S64405	Seat Cushion, D.50MM, giroflex 64-4578	1 196	1 208	1 256	1 719	1 822	2 113	2 472	
S64425	S-CUSH.D.50MM 64-4578 CMF	1 547	1 561	1 624	2 112	2 239	2 925	3 422	
S64322	Seat Cushion, QUILT, giroflex 64-3578-QUI								2 377
R64301	Back Cushion, giroflex 64-3078	1 188	1 198	1 247	1 697	1 799	2 086	2 441	
R64302	Back Cushion, giroflex 64-3078-LAB		511	532					
R64321	Back Cushion, giroflex 64-3078 CMF	1 568	1 583	1 645	2 145	2 274	3 072	3 594	
R64351	Back Cushion, giroflex 64-3578	1 362	1 375	1 429	1 883	1 997	2 316	2 709	
R64371	Back Cushion, giroflex 64-3578 CMF	1 806	1 823	1 896	2 195	2 327	3 299	3 859	
R64521	Back Cushion, giroflex 64-9278	2 383	2 405	2 500	3 383	3 586	4 308	5 040	
R64-5778	Back Cushion, giroflex 64-9778	2 383	2 405	2 057	3 383	3 586	4 308	5 040	
R64581	Back Cushion, giroflex 64-9878	2 383	2 405	2 500	3 383	3 586	4 308	5 040	
R64372	Back Cushion, QUILT, giroflex 64-3578-QUI								1 863
RS6430	Back shell, giroflex 64-3078								1 689
RS6435	Back shell, giroflex 64-35/4578								1 327
RS6452	Back shell, giroflex 64-9278								1 769

Item no	Accessories	①	②	③	④	⑤	⑥	⑦	Price
NP6457	Headrest CUSHION 64-9778	1 333	1 349	1 409	1 416	1 431	1 595	1 863	
NP6458	Headrest CUSHION 64-9878	1 841	1 856	1 930	2 027	2 146	2 489	2 913	
213304810	Coat Hanger, Complete. Powder Coated, giroflex 64-3578								743
815712710	Footring, 500 MM								1 063


giroflex 68 Swivel Chair

Standard configuration

Synchronised mechanism Organicmove
 Seat cushion with dual-zone seat profile
 Backrest upholstered or mesh (Runner or Softtouch)
 Y-support and mechanism in 810 black, 812 pearl-metallic, 813 alu-metallic
 Seat height adjustment 40 - 52 cm
 Seat depth adjustment 5 cm
 Backrest height adjustment 7 cm
 5-arm plastic base in 810 black
 Castors black Ø 65 mm for hard and soft floors, braked unloaded

Certified in accordance to GS EN 1335-1/-2/-3

Designed by Paolo Fancelli

Item no	Base model +	Price Group (PG)	Price Group							Price
			①	②	③	④	⑤	⑥	⑦	
68-3509	giroflex 68-3509 swivel chair Backrest upholstered		5 289	5 337	5 550	6 433	6 819	8 051	9 420	

68-3519	giroflex 68-3519 swivel chair Backrest mesh (Runner or Softtouch)		6 254	6 310	6 563	7 149	7 577	7 929	9 278
---------	--	---	-------	-------	-------	-------	-------	-------	-------

Accessories/Options/Surcharges:

AR6005	Armrest fixed	840
AR6070/6072/6073	Armrest 3D, aluminium support 810 black, 812 pearl-metallic or 813 alu-metallic	1 534
AR6079	Armrest 3D, aluminium support polished	1 902
SPD6000	Softpad for armrest 3D	533
AR6050	Armrest 4D, aluminium support black, with softpad	1 556
AR6055	Armrest 4D-NPR, aluminium support black, with softpad	1 760
HR6001	Headrest adjustable fabric / skai®Palma	1 569
HR6002	Headrest adjustable mesh Runner (Only for: 68-3519)	1 569
HR6003	Headrest Leather	1 836
HR6019	Headrest support chromium plated	142
CMF	Comfort upholstery 68-3509	840
CMF	Comfort upholstery 68-3519	553
AE6010	Coat hanger powder coated 810 black, 812 pearl-metallic or 813 alu-metallic 68-3509	645
AE6010	Coat hanger powder coated 810 black, 812 pearl metallic or 813 alu-metallic 68-3519	749
AE6019	Coat hanger chromium plated 68-3509	749
AE6019	Coat hanger chromium plated 68-3519	891

Accessories/Options/Surcharges:

LS6001	Lumbar support depth adjustable (Only for: 68-3509)	586
ME6002	Seat tilt adjustable (forward tilt 4°)	267
ME6019	Mechanism polished	1260
YS6019	Y-support polished 68-3509	533
YS6019	Y-support polished 68-3519	749
PU6000	Push rod cover	125
LI6025	Special seat height 41-55 cm	303
LI6035	Special seat height 46-62 cm	303
LI6055	Special seat height 54-70 cm	683
LI6075	Special seat height 59-76 cm	840
LI6095	Special seat height 66-83 cm	840
FR6001	Footring chromium plated, centre piece black, Ø 50 cm	916
FB6010	5-arm aluminium base 810 black, 812 pearl-metallic, 813 alu-metallic or polished	369
CL6003	CleanGuard seat (Only for: 68-3519)	166
CL6004	CleanGuard back/seat (Only for: 68-3509)	264

- skai®Palma and leather Natura: only in combination with option "comfort upholstery"
- Special seat height: requires an aluminium footbase. 65 cm and above only with glides or castors braked under load (no surcharge)
- Footring: possible as from special seat height 54-70 cm and above

giroflex 68 | Spare parts

We keep a large assortment of original spare parts in stock to expand the longevity of our products. If you need more information, please contact Customer Service .

The service department performs different types of Giroflex chair repairs, and upgrades with precision.

Get in touch, so we can find out how we can help repair current models or make older Giroflex chairs functional again with original spare parts .

Item no	Castors	Price
123327810	Castor 50/18 Hard Self-Brake under load, for higher seats – Price per unit	145
123328810	Castor 50/18 SOFT Self-Brake under load, for higher seats – Price per unit	145
123329810	Castor 65/18 Hard Self-Brake under load, for higher seats – Price per unit	152
123330810	Castor 65/18 SOFT Self-Brake under load, for higher seats – Price per unit	152
121469810	Dual wheel castor 65/18 Dual wheel castor 65/18 – Price per unitwith brake, Hard for soft floors. Brake when unloaded	134
121470810	Dual wheel castor 65/18 with brake, Soft for hard floors. Brake when unloaded– Price per unit	134
Z12112092	Castor. F111 65 Hard for Soft floors, braking when unloaded – Price per unit	25

Item no	Glides	Price
115142810	Glide to swivel chair – Price per unit	119
122287810	Glide to swivel chair with felt – Price per unit	126

Item no	Bases	Price
221813700	Aluminium base 9530 5-leg, polished	1 137
221813810	Aluminium base 9530 5-leg, Powder-coat, black	742
221813812	Aluminium base 9530 5-leg, Powder-coat, peral-metallic	742
221813813	Aluminium base 9530 5-leg, Powder-coat, aluminium metallic	742
421426810	Base, Plastic, black, 8830	515

Item no	Columns/Gas lifts	Price
822162810	Column/Gas lift Comfort, for seat height 39-51cm, black	422
823664700	Column/Gas lift Comfort, Chromed, for seat height 39-51cm, chrome	439
823053810	Column/Gas lift Comfort, for plastic base – seat height 39-51cm, black, giroflex 68	422
814954810	Telescope for Gas lift 175 MM, for special seat height 46-62 cm, giroflex 68	860
813877810	Column 22, special seat height 46-62cm	719

Item no	Mechanisms	Price
714796810	Mechanism 400, Preassembled, giroflex 68, black	3 645
714796812	Mechanism 400, Preassembled, giroflex 68, pearl-metallic	3 680
714796813	Mechanism 400, Preassembled, giroflex 68, aluminium metallic	3 680
714796701	Mechanism 400, Preassembled, giroflex 68, polished aluminum	4 629
714859810	Mechanism 401, Preassembled, giroflex 68, black	3 815
714859812	Mechanism 401, Preassembled, giroflex 68, pearl-metallic	3 852
714859813	Mechanism 401, Preassembled, giroflex 68, aluminium metallic	3 849
714859701	Mechanism 401, Preassembled, giroflex 68, polished aluminum	4 798

Item no	Mechanism parts	Price
414612810	Guide Below, giroflex 68	60
414518810	Guide Top, giroflex 68	60
215379	Leaf spring 3.2mm Mechanism 400	126
419488	Spring for mechanism 400	186
914823	COMPRESSION SPR.25.1X14.0X1.4	16
414632000	Lever to lock mechanism 400	60
414552810	Release button, back height adjustment, giroflex 68	60
414631810	Handle to lock mechanism, giroflex 68	25
414628810	Button to seat debth adjustment, giroflex 68	60
413988810	Turning Knob, mechanism 300/400	16

Item no	Armrests	Price
619406810	3D-Armrest Complete. Left Structured, black	997
619406812	3D-Armrest Complete. Left Structured, pearl-metallic	997
619406813	3D-Armrest Complete. Left Structured, aluminium metallic	997
619406700	3D-Armrest Complete. Left Structured, polished aluminum	1 217
619407810	3D-Armrest Complete. Right Structured , black	997
619407812	3D-Armrest Complete. Right Structured, pearl-metallic	997
619407813	3D-Armrest Complete. Right Structured, aluminium metallic	997
619407700	3D-Armrest Complete. Right Structured, polished aluminum	1 217
619613810	3D-Armrest Complete. Left, Softpad, black	1 309
619613812	3D-Armrest Complete. Left, Softpad, pearl-metallic	1 309
619613813	3D-Armrest Complete. Left, Softpad, aluminium metallic	1 309
619613700	3D-Armrest Complete. Left, Softpad, polished aluminum	1 529
619614810	3D-Armrest Complete. Right, Softpad, black	1 309
619614812	3D-Armrest Complete. Right, Softpa, pearl-metallic	1 309
619614813	3D-Armrest Complete. Right, Softpad, aluminium metallic	1 309
619614700	3D-Armrest Complete. Right, Softpad, polished aluminum	1 529
620617810	4D-NPR standard, armrest left	675
620618810	4D-NPR standard, armrest right	675
414768810	Fixed Armrest Y-support, left	505
414769810	Fixed Armrest Y-support, right	505

Item no	Armrest-sets	Price
624446810	3D-Armrestset preassembled., black	2 573
624446812	3D-Armrestset preassembled, pearl-metallic	2 573
624446813	3D-Armrestset preassembled, aluminium metallic	2 574
624446700	3D-Armrestset preassembled, polished aluminum	3 663
624447810	3D-Armrestset preassembled, Softpad, black	2 940
624447812	3D-Armrestset preassembled, Softpad, pearl-metallic	2 940

Item no	Armrest-sets	Price
624447813	3D-Armrestset preassembled, Softpad, aluminium metallic	2941
624447700	3D-Armrestset preassembled, Softpad, polished aluminum	4030
624450810	Fixed Armrestset preassembled.	1854
624448810	4D-Armrestset preassembled, black	2671

Item no	Armrest-parts	Price
618826810	3D-Armrest preassembled Left	347
618827810	3D-Armrest preassembled Right	347
418832810	Armpad, SoftPad for 2/3D-Armrest	312
418830810	Armpad, Structured 2/3D-Armrest	211
414614810	Insert Right 2/3D-Armrest	60
414770810	Fixed Armrest, Structured Top	126

Item no	Seat and back plastic parts	Price
414520810	Back shell	211
414531810	Seat Shell	126
624172810	Back shell with Lumbar Function, giroflex 68-3509	760

Item no	Seat and back upholstered parts	①	②	③	④	⑤	⑥	⑦	Price
S68351	Seat cushion, giroflex 68-3509	910	918	1072	1252	1327	1539	1801	
S68371	Seat cushion, giroflex 68-3509 CMF	1239	1250	1300	1705	1807	2278	2665	
R68351	Back cushion, giroflex 68-3509	865	873	908	1259	1334	1549	1812	
R68352	Back cushion, with Lumbar Function, giroflex 68-35	865	873	908	1259	1334	1549	1812	
R68371	Back cushion, with comfort upholstery	1873	1891	1966	2064	2187	2537	2969	
R68372	Back cushion with comfort upholstery. With lumbar support	2218	2243	2332	2449	2596	3011	3523	
R68-3519	Backrest mesh preapplied. giroflex 68-3519								1984
R68-3619	Backrest mesh preapplied. Drilled. giroflex 68-3519								2047

Item no	Accessories	①	②	③	④	⑤	⑥	⑦	Price
KST68-3609	Headrest complete, giroflex 68-3509	1536	1551	1332	1693	1795	1964	2298	
KST68-3619	Headrest complete, giroflex 68-3519	2043	2062	1767	2251	2386	2612	3055	
NP68	NECKREST CUSH.68-3519	1396	1409	1465	1538	1631	1892	2213	
815712710	Footring, 500 MM								1063

Measurements - Office Range (1)

MEASURING POINTS



Seat height



Total height



Backrest height



Armrest height



Seat width



Total width



Backrest width



Seat depth

Measurements according to EN1335 tolerance +/- 5mm

Model			Seat height, loaded (cm)	Seat surface (cm)	Rubber sole diameter (cm)	Weight (kg)
giroflex 10	Sit-Stand Stool	10-2020	64-81	30	33	7.5
		10-3020	64-81	30	33	7.5

Model			Seat height, loaded (cm)	Total height (cm)	Backrest height above seat (cm)	Armrest height above floor (cm)	Seat width (cm)	Backrest width (cm)	Total width (cm)	Seat depth (cm)	Seat-surface inclination angle (deg)	Backrest inclination angle (deg)	Mechanism - adjustm. range (kg)	Weight (standard config.) (kg)
giroflex 161	Visitor's Chair	161-6003	42	85	41	67	45	43	58	45				9.9
		161-6203	42	85	41	67	45	43	58	45				10.1
		161-6403	42	85	41	67	45	43	58	45				9.8
		161-6403-KNI	42	85	41	67	45	43	58	45				9.8
giroflex 313	Swivel Chair	313-4039	39-51	88-101	45		49	47	70	44	1-8	0-21	45-120	10.9
		313-4539	39-51	89-102	46		49	48	70	44	1-8	0-21	45-120	12.9
	Conference Chair	313-4018	45	94	45		49	47	70	44	0-3.7	0-13	45-120	9.7
		313-4518	45	95	46		49	48	70	44	0-3.7	0-13	45-120	10.8
giroflex 40	Swivel chair	40-4049	37.5-51.5	99.5-113.5	62	17-26	51	44.5	66	42-48	0-3	0-28	45-110	17.5

Measurements - Office Range (2)

Model			Seat height, loaded (cm)	Total height (cm)	Backrest height above seat (cm)	Armrest height above floor (cm)	Seat width (cm)	Backrest width (cm)	Total width (cm)	Seat depth (cm)	Seat-surface inclination angle (deg)	Backrest inclination angle (deg)	Mechanism - adjustm. range (kg)	Weight (standard config.) (kg)
giroflex 353	Swivel Chair	353-4029	39-51	99-118	59-65		49	46	70	38-44		0-21	45-120	12.3
		353-4029-NPR	41-55	99-118	59-65		49	46	70	38-48	2-9	0-21	45-120	12.4
		353-4529	39-51	100-119	60-66		49	46	70	38-44		0-21	45-120	13.6
	Conference Chair	353-3018	39-51	89-101	46	63-75	47	46	70	43				9.8
		353-3518	39-51	90-102	47	63-75	47	47	70	43				10.4
	Visitor's Chair Cantilever	353-3003	44	92	46		47	46	52	43				8.4
		353-7003	44	92	46	67	47	46	64	43				9.2
		353-3503	44	93	47		47	47	52	43				8.9
		353-7503	44	93	47	67	47	47	64	43				9.7
	Visitor's Chair 4-legged	353-3004	44	93	46		47	46	53	43				6.5
		353-7004	44	93	46	67	47	46	64	43				7.3
		353-3504	44	94	47		47	47	53	43				7
		353-7504	44	94	47	67	47	47	64	43				7.8
	giroflex 434	Swivel Chair	434-3019	40-52	96-108	55		50	48	68	43		0-25	45-120
434-4019			40-52	102-114	61		50	48	68	43		0-25	45-120	15.4
Visitor's Chair		434-7013	42	86	39	66	49	57	57	44				10.5
		434-3003	42	88	43		47	53	53	45				8.5
giroflex 64	Swivel Chair	64-3078	40-52	92-111	47-54		45	43	66	41.5-44	0-12	0-24	45-120	17
		64-3578	40-52	100-119	55-62		45	43	66	41.5-44	0-12	0-24	45-120	17.4
		64-3578-QUI	40-52	100-119	55-62		45	43	66	41.5-44	0-12	0-24	45-120	17.8
		64-4578	40-52	100-119	55-62		48.5	43	66	41.5-44	0-12	0-24	45-120	17.7
	Executive Chair	64-9278	40-52	106-125	60-67		51	47	66	45-47.5	0-12	0-24	45-120	21.8
		64-9778	40-52	117-136	60-67		51	47	66	45-47.5	0-12	0-24	45-120	22.8
		64-9878	40-52	119-148	60-67		51	47	66	45-47.5	0-12	0-24	45-120	25.6
giroflex 68	Swivel Chair	68-3509	40-52	102-121	58-65		46	42	67	40-45	0-12	0-23	45-120	16.4
		68-3519	40-52	101-120	57-64		46	44	67	41-46	0-12	0-23	45-120	16.4

Packaging measurements

Changes from 18th of September 2023:

Giroflex will implement 100% recyclable boxes. It will be the possibility to order swivel chairs in fully, or semi-knocked down versions – depending on model.

This will become the standard option and has many benefits e.g. logistic flow emits less CO2, boxes take less storage and are easier to carry on.

Underneath you will see an overview of possible choices per model.

Model	Type	Configuration	Assembled in foil ¹		Assembled in box		Semi-knocked down		Fully knocked down	
			Possibility	Size (mm)	Possibility	Size (mm)	Possibility	Size (mm)	Possibility	Size (mm)
10-2020	Sit-stand Stools	All options	NO	380X340X720	YES	380X340X720	NO	n/a	NO	n/a
10-3020	Sit-stand Stools	All options	NO	380X340X720	YES	380X340X720	NO	n/a	NO	n/a
161-6003	Conference	All options	NO	670x730x955	YES	670x730x955	NO	n/a	NO	n/a
161-6203	Conference	All options	NO	670x730x955	YES	670x730x955	NO	n/a	NO	n/a
161-6403	Conference	All options	NO	670x730x955	YES	670x730x955	NO	n/a	NO	n/a
161-6403-KNI	Conference	All options	NO	670x730x955	YES	670x730x955	NO	n/a	NO	n/a
313-4018	Swivel/Visitor	All options	YES	670x730x1160	YES	670x730x1160	YES	670x730x835	NO	n/a
313-4039	Swivel	Seat height 39-51,49-65;52-69;57-74	YES	735x760x1115	YES	735x760x1115	YES	670x730x835	NO	n/a
313-4039	Swivel	Seat height 64-81	YES	735x760x1315	YES	735x760x1315	YES	670x730x835	NO	n/a
313-4518	Swivel/Visitor	All options	YES	670x730x1160	YES	670x730x1160	YES	670x730x835	NO	n/a
313-4539	Swivel	Seat height 39-51,49-65;52-69;57-74	YES	735x760x1115	YES	735x760x1115	YES	670x730x835	NO	n/a
313-4539	Swivel	Seat height 64-81	YES	735x760x1315	YES	735x760x1315	YES	670x730x835	NO	n/a

						Assembled in foil ¹		Assembled in box		Semi-knocked down		Fully knocked down	
353-3003	Conference	1pcs in Box	NO	YES		670x730x955	NO	NO	n/a	NO	n/a	NO	n/a
353-3003	Conference	2pcs in Box	NO	YES		670x730x1160	NO	NO	n/a	NO	n/a	NO	n/a
353-3004	Conference	1pcs in Box	NO	YES		670x730x955	NO	NO	n/a	NO	n/a	NO	n/a
353-3004	Conference	2pcs in Box	NO	YES		670x730x1160	NO	NO	n/a	NO	n/a	NO	n/a
353-3018	Swivel/Visitor	4arm base	YES	YES		670x730x1160	YES	YES	670x730x835	YES	670x730x835	NO	n/a
353-3018	Swivel/Visitor	5arm base	YES	YES		670x730x955	YES	YES	670x730x835	YES	670x730x835	NO	n/a
353-3018-C2G	Swivel/Visitor	All options	NO	NO		n/a	NO	NO	n/a	NO	n/a	YES	680x680x440
353-3503	Conference	1pcs in Box	NO	YES		670x730x955	NO	NO	n/a	NO	n/a	NO	n/a
353-3503	Conference	2pcs in Box	NO	YES		670x730x1160	NO	NO	n/a	NO	n/a	NO	n/a
353-3504	Conference	1pcs in Box	NO	YES		670x730x955	NO	NO	n/a	NO	n/a	NO	n/a
353-3504	Conference	2pcs in Box	NO	YES		670x730x1160	NO	NO	n/a	NO	n/a	NO	n/a
353-3518	Swivel/Visitor	4arm base	YES	YES		670x730x1160	YES	YES	670x730x835	YES	670x730x835	NO	n/a
353-3518	Swivel/Visitor	5arm base	YES	YES		670x730x955	YES	YES	670x730x835	YES	670x730x835	NO	n/a
353-4029	Swivel	No headrest & Seat height 39-51;41-55;46-62;49-65	YES	YES		735x760x1115	YES	NO	n/a	NO	n/a	YES	735x720x480
353-4029	Swivel	No headrest & Seat height 55-72;62-79	YES	YES		735x760x1315	YES	NO	n/a	NO	n/a	YES	735x720x480
353-4029	Swivel	headrest & Seat height 39-51;41-55	YES	YES		735x760x1315	YES	YES	670x730x1160	YES	670x730x1160	NO	n/a
353-4029	Swivel	headrest & Seat height 46-62;49-65;55-72;62-79	YES	YES		735x760x1315	YES	YES	670x730x1160	YES	670x730x1160	NO	n/a
353-4029-NPR	Swivel	No headrest & Seat height 39-51;41-55;46-62	YES	YES		735x760x1115	YES	NO	n/a	NO	n/a	YES	735x720x480
353-4029-NPR	Swivel	No headrest & Seat height 49-65;55-72;62-79	YES	YES		735x760x1315	YES	NO	n/a	NO	n/a	YES	735x720x480
353-4029-NPR	Swivel	headrest & Seat height 39-51;41-55	YES	YES		735x760x1315	YES	YES	670x730x1160	YES	670x730x1160	NO	n/a
353-4029-NPR	Swivel	headrest & Seat height 41-55;46-62;49-65;55-72;62-79	YES	YES		735x760x1315	YES	YES	670x730x1160	YES	670x730x1160	NO	n/a
353-4529	Swivel	No headrest & Seat height 39-51;41-55;46-62;49-65	YES	YES		735x760x1115	YES	NO	n/a	NO	n/a	YES	735x720x480
353-4529	Swivel	No headrest & Seat height 55-72;62-79	YES	YES		735x760x1315	YES	NO	n/a	NO	n/a	YES	735x720x480
353-4529	Swivel	headrest & Seat height 39-51;41-55;	YES	YES		735x760x1315	YES	YES	670x730x835	YES	670x730x835	NO	n/a

353-4529	Swivel	headrest & Seat height 46-62;49-65;55-72;62-79	YES	YES	735x760x1315	YES	670x730x1160	NO	n/a
353-4529-LAB	Swivel	No headrest & Seat height 39-51;41-55;46-62;49-65	YES	YES	735x760x1115	NO	n/a	YES	735x720x480
353-4529-LAB	Swivel	No headrest & Seat height 55-72;62-79	YES	YES	735x760x1315	NO	n/a	YES	735x720x480
353-4529-LAB	Swivel	headrest & Seat height 46-62;49-65;55-72;62-79	YES	YES	735x760x1315	YES	670x730x1160	NO	n/a
353-7003	Conference	1pcs in Box	NO	YES	670x730x955	NO	n/a	NO	n/a
353-7003	Conference	2pcs in Box	NO	YES	670x730x1160	NO	n/a	NO	n/a
353-7004	Conference	1pcs in Box	NO	YES	670x730x955	NO	n/a	NO	n/a
353-7004	Conference	2pcs in Box	NO	YES	670x730x1160	NO	n/a	NO	n/a
353-7503	Conference	1pcs in Box	NO	YES	670x730x955	NO	n/a	NO	n/a
353-7503	Conference	2pcs in Box	NO	YES	670x730x1160	NO	n/a	NO	n/a
353-7504	Conference	1pcs in Box	NO	YES	670x730x955	NO	n/a	NO	n/a
353-7504	Conference	2pcs in Box	NO	YES	670x730x1160	NO	n/a	NO	n/a
40-4049	Swivel	Without headrest	YES	YES	735x760x1115	YES	670x730x955	NO	n/a
40-4049	Swivel	With Headrest	YES	YES	735x760x1315	YES	670x730x1160	NO	n/a
434-3003	Conference	All options	NO	YES	670x730x1160	NO	n/a	NO	n/a
434-3019	Swivel	Seat height 40-52;43-59;46-62; 52-69	YES	YES	735x760x1115	NO	n/a	YES	735x720x480
434-3019	Swivel	Seat height;59-76; 66-83	YES	YES	735x760x1315	NO	n/a	YES	735x720x480
434-3019-C2G	Swivel	All options	NO	NO	n/a	NO	n/a	YES	680x680x440
434-4019	Swivel	Seat height 40-52;43-59;46-62	YES	YES	735x760x1115	NO	n/a	YES	815x720x515
434-4019	Swivel	Seat height 55-72;62-79	YES	YES	735x760x1315	NO	n/a	YES	815x720x515
434-7013	Conference	All options	NO	YES	670x730x955	NO	n/a	NO	n/a
434-7929	Swivel	All options	YES	YES	735x760x1115	YES	670x730x835	NO	n/a
545-4529	Swivel	No headrest & Seat height 40-52;41-55;46-62;49-65	YES	YES	735x760x1115	YES	670x730x835	NO	n/a
545-4529	Swivel	No headrest & Seat height 55-72; 59-76; 62-79	YES	YES	735x760x1315	YES	670x730x835	NO	n/a
545-4529	Swivel	headrest & Seat height 40-52;41-55;46-62;55-72;49-65	YES	YES	735x760x1315	YES	670x730x1160	NO	n/a

545-4529	Swivel	Headrest & Seat height 59-76; 62-79	YES	YES	735x760x1315	YES	670x730x1160	NO	n/a
60-9229-24H	Swivel	Seat height 40-52,43-59	YES	YES	735x760x1115	YES	670x730x835	NO	n/a
60-9229-24H	Swivel	Seat height 46-62,52-69; 59-76	YES	YES	735x760x1315	YES	670x730x835	NO	n/a
60-9229-24H	Swivel	Seat height 66-83	YES	YES	735x760x1315	YES	670x730x835	NO	n/a
60-9829-24H	Swivel	Headrest & Seat height 40-52,43-59; 46-62	YES	YES	735x760x1315	YES	670x730x955	NO	n/a
60-9829-24H	Swivel	Headrest & Seat height 52-69;59-76; 66-83	YES	YES	735x760x1315	YES	670x730x955	NO	n/a
64-3078	Swivel	Seat height 40-52,43-59;46-62; 52-69	YES	YES	735x760x1115	YES	670x730x835	NO	n/a
64-3078	Swivel	Seat height 59-76; 66-83	YES	YES	735x760x1315	YES	670x730x835	NO	n/a
64-3078-LAB	Swivel	Seat height 40-52,43-59;46-62; 52-69	YES	YES	735x760x1115	YES	670x730x835	NO	n/a
64-3078-LAB	Swivel	Seat height 59-76; 66-83	YES	YES	735x760x1315	YES	670x730x835	NO	n/a
64-3080	Swivel	Seat height 39-51,40-52;43-59;46-59;47-65;52-69	YES	YES	735x760x1115	YES	670x730x835	NO	n/a
64-3080	Swivel	Seat height 59-76; 66-83	YES	YES	735x760x1315	YES	670x730x835	NO	n/a
64-3578	Swivel	Seat height 40-52,43-59;46-62	YES	YES	735x760x1115	YES	670x730x835	NO	n/a
64-3578	Swivel	Seat height 52-69; 59-76; 66-83	YES	YES	735x760x1315	YES	670x730x835	NO	n/a
64-3578-LAB	Swivel	Seat height 40-52,43-59;46-62	YES	YES	735x760x1115	YES	670x730x835	NO	n/a
64-3578-LAB	Swivel	Seat height 52-69; 59-76; 66-83	YES	YES	735x760x1315	YES	670x730x835	NO	n/a
64-3578-QUI	Swivel	Seat height 40-52,43-59;46-62	YES	YES	735x760x1115	YES	670x730x835	NO	n/a
64-3578-QUI	Swivel	Seat height 52-69; 59-76; 66-83	YES	YES	735x760x1315	YES	670x730x835	NO	n/a
64-4080	Swivel	Seat height 39-51,40-52;43-59;46-59;47-65;52-69	YES	YES	735x760x1115	YES	670x730x835	NO	n/a
64-4080	Swivel	Seat height 59-76; 66-83	YES	YES	735x760x1315	YES	670x730x835	NO	n/a
64-4578	Swivel	Seat height 40-52,43-59;46-62	YES	YES	735x760x1115	YES	670x730x835	NO	n/a
64-4578	Swivel	Seat height 52-69; 59-76; 66-83	YES	YES	735x760x1315	YES	670x730x835	NO	n/a

64-9278	Swivel	Seat height 40-52,43-59	YES	YES	YES	735x760x1115	YES	670x730x835	NO	n/a
64-9278	Swivel	Seat height 46-62;52-69; 59-76	YES	YES	YES	735x760x1315	YES	670x730x835	NO	n/a
64-9278	Swivel	Seat height 66-83	YES	YES	YES	735x760x1315	YES	670x730x835	NO	n/a
64-9278-24H	Swivel	Seat height 40-52,43-59	YES	YES	YES	735x760x1115	YES	670x730x1160	NO	n/a
64-9278-24H	Swivel	Seat height 46-62;52-69; 59-76	YES	YES	YES	735x760x1315	YES	670x730x1160	NO	n/a
64-9278-24H	Swivel	Seat height 66-83	YES	NO	YES	n/a	YES	670x730x1160	NO	n/a
64-9778	Swivel	Seat height 40-52,43-59; 46-62;52-69;	YES	YES	YES	735x760x1315	YES	670x730x1160	NO	n/a
64-9778	Swivel	Seat height 59-76; 66-83	YES	NO	YES	n/a	YES	670x730x1160	NO	n/a
64-9878	Swivel	Seat height 40-52,43-59; 46-62;52-69;	YES	YES	YES	735x760x1315	YES	670x730x1160	NO	n/a
64-9878	Swivel	Seat height 59-76; 66-83	YES	NO	YES	n/a	YES	670x730x1160	NO	n/a
64-9878-24H	Swivel	Seat height 40-52,43-59; 46-62;52-69;	YES	YES	YES	735x760x1315	YES	670x730x1160	NO	n/a
64-9878-24H	Swivel	Seat height 59-76; 66-83	YES	NO	YES	n/a	YES	670x730x1160	NO	n/a
68-3509	Swivel	No headrest & Seat height 40-52,41-55;46-62	YES	YES	YES	735x760x1115	YES	670x730x835	NO	n/a
68-3509	Swivel	No headrest & Seat height 54-70; 59-76; 66-83	YES	YES	YES	735x760x1315	YES	670x730x835	NO	n/a
68-3509	Swivel	headrest & Seat height 40-52,41-55;46-62;54-70	YES	YES	YES	735x760x1315	YES	670x730x1160	NO	n/a
68-3509	Swivel	headrest & Seat height 59-76; 66-83	YES	NO	YES	n/a	YES	670x730x1160	NO	n/a
68-3519	Swivel	No headrest & Seat height 40-52,43-59;46-62	YES	YES	YES	735x760x1115	YES	670x730x835	NO	n/a
68-3519	Swivel	No headrest & Seat height 52-69; 59-76; 66-83	YES	YES	YES	735x760x1315	YES	670x730x835	NO	n/a
68-3519	Swivel	headrest & Seat height 40-52,41-55;46-62;54-70	YES	YES	YES	735x760x1315	YES	670x730x1160	NO	n/a
68-3519	Swivel	headrest & Seat height 59-76;66-83	YES	NO	YES	n/a	YES	670x730x1160	NO	n/a

1 Option "Assembled in foil" only available in Switzerland, Germany, France and Benelux

Standard fabrics

Delivery times for standard and extended colour range:

This is the Giroflex standard selection of textiles and colours. All fabrics and leather in our Standard collection are of excellent quality and come from renowned suppliers we choose to collaborate with.

Normal delivery time for Giroflex' Standard fabric collection is 15 days from factory.

The guarantee requires that routine cleaning is performed on the chair and textile/leather.

Maintenance:

To maintain fabrics and leather, please vacuum with a furniture brush or use a clean cloth or sponge slightly dampened with clean lukewarm water.

Other colours than listed here are in our Extended colour collection and might fall into a different price group. Please note that colours shown in these illustrations may vary from the actual colours. Please contact your local Giroflex supplier to view a sample.

NOTE! Some fabrics in our Collections may not be approved for all Giroflex chairs, please contact our Customer Service for more information.

CURA (GABRIEL) - PRICE GROUP 1

Cura is a two-coloured fabric made from 98% post-consumer recycled polyester. It has a matt, slightly irregular and natural-looking texture where the dark, underlying grey fibers create a discreet yet vibrant melange effect. High durability and stretchability and its soft, voluminous touch make Cura suitable for both office and lounge furniture.

Composition: 98% post-consumer recycled polyester, 2% polyester

Weight: 420 g/lm

Abrasion resistance: 100 000 Martindale (EN ISO 12947-2)

Flammability: BS EN 1021: 1-2, BS 5852 0&1, CA TB 117-2013, ASTM E 84 Class I

Light fastness: 5-8 (EN ISO 105 - B02)

Rubbing fastness: 4-5/4-5 (Wet/Dry) (EN ISO 105X12)

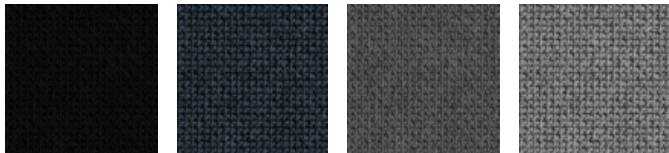
Pilling: 4-5 (EN ISO 12945-2)

Environmental facts: EU Ecolabel, Oeko-Tex® Standard 100, Contains no Flame Retardant chemicals, ISO 14001 certified company

Design: Cenk Kivrikoglu

Produced in: Lithuania

Cleaning: Wash or dry cleaning, Can be disinfected with ethanol and is bleach-cleanable (For further info follow Gabriel´s cleaning guidelines - www.gabriel.dk)



CU60999

CU66165

CU60109

CU60110

XTREME (CAMIRA) - PRICE GROUP 1

Xtreme is a crepe fabric made from 100% post-consumer recycled polyester that features exceptional Euro flammability performance. Extra stretch and structure gives an irregular, shiny finish.

Composition: 100% post-consumer recycled polyester

Weight: 310 g/m²

Abrasion resistance: >100 000 Martindale (EN ISO 12947-2)

Flammability: BS EN 1021: 1-2 (Cigarette & match), BS 7176 Low & Medium Hazard, BS 5852 Section 4 Crib 5, DIN 4102 B1, UNI 9175 Class 1 IM, NF D 60-013

Light fastness: 6 (EN ISO 105 - B02: 2013)

Rubbing fastness: 4/4 (Wet/Dry) (EN ISO 105X12)

Pilling: 5 (EN ISO 12945-2)

Environmental facts: EU Ecolabel, Oeko-Tex® Standard 100, Indoor Advantage™ "Gold", non metallic dyestuffs, ISO 14001 certified company.

Design: Camira Design Studio

Produced in: United Kingdom

Cleaning & disinfection: Washable to 60 °C and bleach cleanable (For further info follow Camira's cleaning guidelines - www.camirafabrics.com)



EXR009

EXR026

EXR046

EXR081

EXR145

RUNNER - PRICE GROUP 2

Runner is a robust yet soft mesh quality with an airy and comfortable feel. With its self-supporting properties and stability it offers a high level of comfort in use. It is made of a mix of polyester and post-consumer recycled polyester. The three-dimensional structure combine an irregular surface pattern in a semi-transparent texture on a dense bottom layer. The palette of monochrome colours in clear but soft hues add a refined and sporty look to the furniture.

Composition: 80% polyester, 20% post-consumer recycled polyester

Weight: 510 g/lm

Abrasion resistance: 70000 Martindale (EN ISO 12947-2)

Flammability: BS EN 1021: 1-2 (Cigarette & match), CA TB 117-2013, Class Uno 9175 Class 2 I EMME,

Light fastness: 5-7 (EN ISO 105-B02)

Rubbing fastness: 4-5/4-5 (Wet/Dry) (EN ISO 105X12)

Pilling: 5 (EN ISO 12945-2)

Environmental facts: EU Ecolabel, Oeko-Tex® Standard 100, 100% free of heavy metals and harmful chemicals, ISO 14001 certified company

Design: Inger Mosholt Nielsen, Cenk Kivrikoglu

Produced in: Lithuania

Cleaning: Wash orl dry cleaning (For further info follow Gabriel´s cleaning guidelines_www.gabriel.dk



SELECT (GABRIEL) - PRICE GROUP 2

Select is a classic woolen fabric with a tightly woven relief structure, combining excellent softness, stretch and durability. Its rich texture with the interplay of light and shadow add depth in all the colours in the palette.

Composition: 85% New Zealand wool, 15% polyamide

Abrasion resistance: 200 000 Martindale (EN ISO 12947-2)

Flammability: BS EN 1021: 1-2, BS 5852 0&1, BS5852 Crib 5, CA TB 117-2013, IMO MSC 307(88) Annex 1 part 8/MED registration IMO

Light fastness: 5-8 (EN ISO 105 - B02)

Rubbing fastness: 4-5/4-5 (Wet/Dry) (EN ISO 105X12)

Pilling: 4 (EN ISO 12945-2)

Environmental facts: EU Ecolabel, Oeko-Tex® Standard 100, 100% free of heavy metals, ISO 14001 certified company

Design: Cenk Kivrikoglu

Produced in: Lithuania

Cleaning: Professional dry cleaning (For further info follow Gabriel's cleaning guidelines - www.gabriel.dk)



SKAI PALMA - PRICE GROUP 2

Skai Palma is a synthetic leather made of PVC. The surface is embossed with a leather grain structure with a smooth touch. It is easy cleanable on a regular basis.

Composition: 89% PVC-Compound, 11% CO/PES-knitted fabric

Weight: 825 +/- 50 g/m²

Thickness: 1,3 +/- 0,2mm

Abrasion resistance: 100 000 Martindale (EN ISO 5470-2)

Flammability: DIN 4102 (part 1, B2), NF M2, BS5852 IS-0&1, EN 1021-1+2, MVSS302, FAR 25.853, ÖNORM B3825, ÖNORM A 3800-1 Q1, UNI 9175/87 (1.IM)

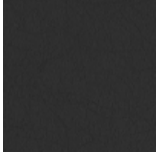
Rubbing fastness: 4-5/4-5 (Wet/Dry) (EN ISO 105X12)

Pilling: 4-5 (EN ISO 12945-2)

Environmental facts: Fulfills REACH requirements, ISO 14001 certified company

Produced in: Germany

Cleaning & disinfection: For Cleaning and disinfection follow Skai's cleaning guidelines www.skai.com)



PLM701

CAPTURE (GABRIEL) - PRICE GROUP 3

Capture is a lightly felted and multi-coloured wool fabric combining softness, stretch and strenght. It fuses light and dark colours to a refined melange pattern in subtle nuances, which add richness and depth to the design.

Composition: 85% New Zealand wool, 15% polyamide

Abrasion resistance: 200.000 Martindale (EN ISO 12947-2)

Flammability: BS EN 1021: 1-2 (Cigarette & match), BS 5852 Part 1 0,1 (Cigarette & match), CA TB 117-2013, Class Uno UNI 9175 Class 1 IM

Light fastness: 5-7 (EN ISO 105-B02)

Rubbing fastness: 4-5/4-5 (Wet/Dry) (EN ISO 105X12)

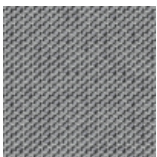
Pilling: 4-5 (EN-ISO 12945-2)

Environmental facts: EU Ecolabel, Oeko-Tex® Standard 100, 100% free of heavy metals, ISO 14001 certified company

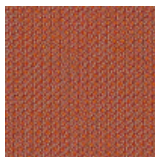
Design: Cenk Kivrikoglu

Produced in: Lithuania

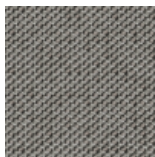
Cleaning: Professional dry cleaning (For further info follow Gabriel's cleaning guidelines - www.gabriel.dk)



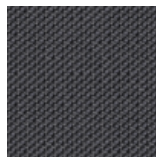
CPT4102



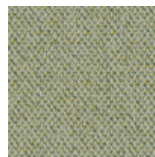
CPT4301



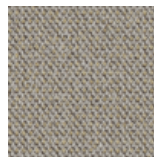
CPT4401



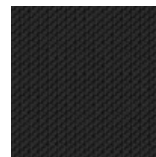
CPT4601



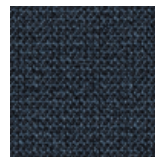
CPT5101



CPT5103



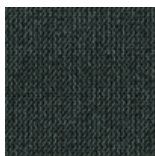
CPT5501



CPT6001



CPT6401



CPT6601

FOCUS (GABRIEL) - PRICE GROUP 3

Focus is a woven felt fabric made of 100% long-staple worsted wool. It has an ultra soft and satiny touch combined with high strength obtained by use of high-quality worsted wool yarn and careful production processes. In addition to high durability, the fabric does not pill and will remain attractive over time regardless of wear and tear.

Composition: 100% New Zealand wool

Weight: 660 g/lm

Abrasion resistance: 100 000 Martindale (EN ISO 12947-2)

Flammability: BS EN 1021: 1-2 (Cigarette & match), BS 5852 Part 1 0.1 Cigarette and match, CA TB 117-2013, Class Uno UNI 9175 Class 1 I EMME, ÖNORM A33800-B1-B33825-Q1UK, AM 18 - NF D 60-013-(only for fabric)

Light fastness: 5-7 (EN ISO 105-B02)

Rubbing fastness: 4-5/4-5 (Wet/Dry) (EN ISO 105X12)

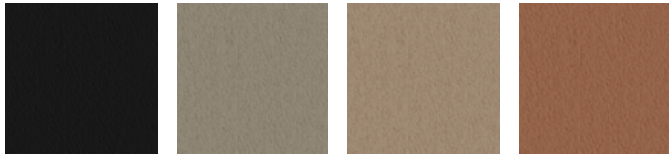
Pilling: 4 (EN ISO 12945-2)

Environmental facts: EU Ecolabel, Free of heavy metals and harmful chemicals, biodegradable, Oeko-Tex® Standard 100, ISO 14001 certified company

Design: Inger Mosholt Nielsen, colours Cenk Kivrikoglu

Produced in: Lithuania

Cleaning: Professional dry cleaning (For further info follow Gabriel´s cleaning guidelines – www.gabriel.dk)



FC60999

FC61042

FC61039

FC61036

FOCUS MELANGE (GABRIEL) - PRICE GROUP 3

Focus Melange is a woven felt fabric made of 100% long-staple worsted wool. It has an ultra soft and satiny touch combined with high strength obtained by use of high-quality worsted wool yarn and careful production processes. In addition to high durability, the fabric does not pill and will remain attractive over time regardless of wear and tear. The equal thickness between the warp and weft yarn give a harmonious and symmetric melange colour expression.

Composition: 100% New Zealand wool

Weight: 660 g/lm

Abrasion resistance: 100 000 Martindale (EN ISO 12947-2)

Flammability: BS EN 1021: 1-2 (Cigarette & match), BS 5852 Part 1 0.1 Cigarette and match, CA TB 117-2013, Class Uno UNI 9175 Class 1 I EMME, ÖNORM A33800-B1-B33825-Q1UK

Light fastness: 5-7 (EN ISO 105-B02)

Rubbing fastness: 4-5/4-5 (Wet/Dry) (EN ISO 105X12)

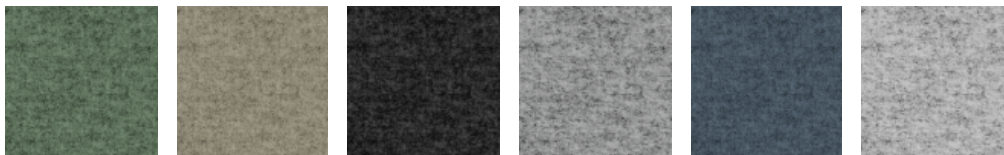
Pilling: 4 (EN ISO 12945-2)

Environmental facts: EU Ecolabel, Free of heavy metals and harmful chemicals, biodegradable, Oeko-Tex® Standard 100, ISO 14001 certified company

Design: Inger Mosholt Nielsen, colours Cenk Kivrikoglu

Produced in: Lithuania

Cleaning: Professional dry cleaning (For further info follow Gabriel´s cleaning guidelines – www.gabriel.dk)



FCM68247

FCM61240

FCM60900

FCM60310

FCM60308

FCM60309

GAJA CLASSIC (GABRIEL) - PRICE GROUP 3

A classic cr pe structured fabric in pure new wool. Finishing treatment gives a soft surface. It has a wide colour range in both subdued and strong colours.

Composition: 100% pure new wool

Weight: 530 g/lm

Abrasion resistance: 50 000 Martindale (EN ISO 12947-2)

Flammability: BS EN 1021: 1-2 (Cigarette & match), BS 5852 0&1 (Cigarette & match), BS 5852 Crib 5, Calif. Bull. 117-2013, IMO A.652 (16), UNI 9175 Class 1 IM, BS 476 Part 7 Class 1 I

Light fastness: 5-7 (EN ISO 105-B02)

Rubbing fastness: 4-5/4-5 (Wet/Dry) (EN ISO 105X12)

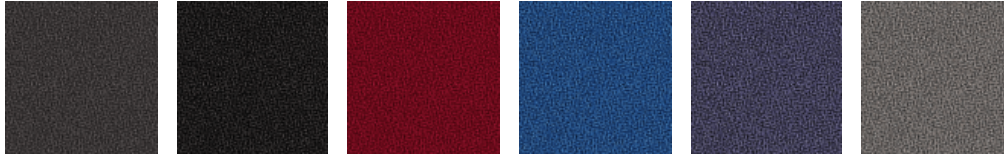
Pilling: 4-5 (EN ISO 12945-2)

Environmental facts: EU Ecolabel, Free of heavy metals, Oeko-Tex® Standard 100, ISO 14001 certified company

Design: Dorte Bo Bojesen

Produced in: Lithuania

Cleaning: Professional dry cleaning (For further info follow Gabriel's cleaning guidelines - www.gabriel.dk)



GA60019

GA60999

GA64089

GA66004

GA66005

GA60003

GRANO (JAB/CLIMATEX) - PRICE GROUP 3

Grano is a durable tightly woven fabric in a specially designed mix of natural and synthetic fibers, specially constructed to be recycled easily. It has a two-toned pattern with a textured feel.

Composition: 69 % Cradura™, PA, 18 % Certified Virgin Wool (WV), 13 % Redesigned Lenzing FR™, CV FR

Weight: 465 g/lfm

Abrasion resistance: 465'000 Martindale, EN ISO 12947-2

Flammability: EN 1021-1/2, BS 5852-0/1, IMO Resolution MSC 307 (88) Annex 1, Part 8, California TB 117, Class 1, NFPA 260

Light fastness: 6, EN ISO 105-B02

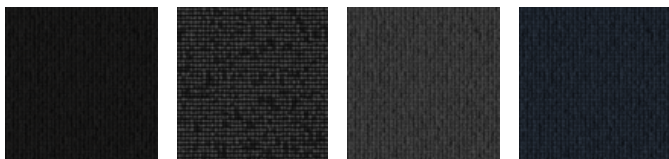
Rubbing fastness: 4/4-5 (Wet/Dry) (EN ISO 105-X12)

Pilling: 5 (EN ISO 12945-2)

Environmental facts: Oeko-Tex® Standard 100, 100% Free of heavy metals, Cradle to Cradle Certified™ Silver, recyclable.

Designed by: Climatex Design team

Produced in: Germany



GRO099

GRO094

GRO092

GRO051

OCEANIC (CAMIRA) - PRICE GROUP 3

Oceanic is made from 100 % post-consumer recycled polyester yarn where 90% are created from post-consumer plastic bottles diverted from landfill and 10% is upcycled marine plastic(from marine litter). It is a fabric born out of the SEAQUAL Initiative designed to combat marine plastic pollution and achieve a waste free environment. Oceanic has a two coloured diagonal structure with a matte surface and soft touch.

Composition: 100 % post-consumer recycled polyester, including 50% SEAQUAL yarn

Weight: 497 g/m² ±5%

Abrasion resistance: >100 000 Martindale (EN ISO 12947-2)

Flammability: BS EN 1021: 1-2 (Cigarette & match), BS 7176 Low, BS 7176 Medium Hazard with EnviroFlam5, CA TB 117-2013

Light fastness: 5 (EN ISO 105 - B02: 2013)

Rubbing fastness: 4/4 (Wet/Dry) (EN ISO 105X12)

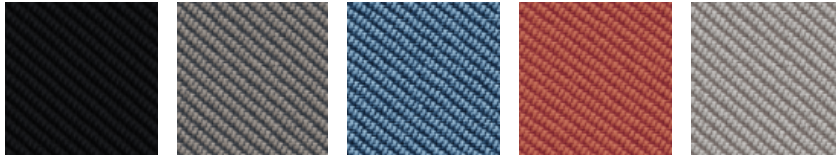
Pilling: 4 (EN ISO 12945-2)

Environmental facts: EU Ecolabel, Oeko-Tex® Standard 100, Indoor Advantage™ "Gold", non metallic dyestuffs, ISO 14001 certified company.

Design: Camira Design Studio

Produced in: United Kingdom

Cleaning & disinfection: Washable at 60 °C and bleach cleanable (For further info follow Camira´s cleaning guidelines – www.camirafabrics.com)



OCI001

OCI008

OCI011

OCI012

OCI014

STEP (GABRIEL) - PRICE GROUP 3

Step is unique in both texture and performance. With its delicate surface, Step is perceived as vivid and interesting. The texture with the fire-resistant Trevira CS yarn ensures that the fabric is suited for use in environments with high fire safety and durability requirements.

Composition: 100% Trevira CS

Weight: 336 g/m²

Composition: 100% Trevira cs

Abrasion resistance: 100 000 Martindale (EN ISO 12947-2)

Flammability: BS EN 1021: 1&2 (Cigarette & match), BS 5852 0&1 (Cigarette & match), BS 5852 Crib 5, CA TB 117-2013, MED Certificate IMO, Class Uno UNI 9175 Class 1 EMME, ÖNORM

Light fastness: 5-7 (EN ISO 105 - B02)

Rubbing fastness: 4-5/4-5 (Wet/Dry) (EN ISO 105X12)

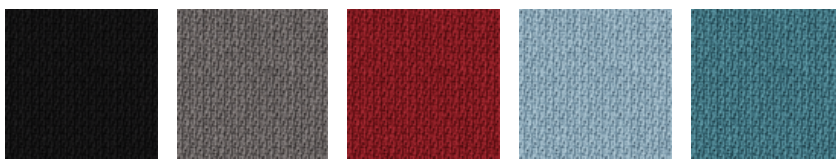
Pilling: 4-5 (EN ISO 12945-2)

Environmental facts: EU Ecolabel, Oeko-Tex® Standard 100, 100% free of heavy metals, ISO 14001 certified company

Design: Inger Mosholt Nielsen

Produced in: Lithuania

Cleaning: Professional dry cleaning (For further info follow Gabriel's cleaning guidelines www.gabriel.dk)



SE60999

SE60011

SE64013

SE67004

SE67072

STEP MELANGE (GABRIEL) - PRICE GROUP 3

Step Melange is woven in Trevira CS, an extremely hard-wearing fire-resistant material. With its simple, discreet and heathered structure, Step Melange can be combined in numerous ways, not least with its unicoloured partner Step.

Composition: 100% Trevira cs

Weight: 336 g/m²

Abrasion resistance: 100 000 Martindale (EN ISO 12947-2)

Flammability: BS EN 1021: 1&2 (Cigarette & match), BS 5852 0&1 (Cigarette & match), BS 5852 Crib 5, CA TB 117-2013, MED Certificate IMO, Class Uno UNI 9175 Class 1 EMME, ÖNORM B3825, ÖNORM 3800-1q1

Light fastness: 5-7 (EN ISO 105 - B02)

Rubbing fastness: 4-5/4-5 (Wet/Dry) (EN ISO 105X12)

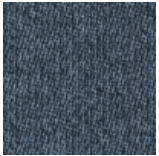
Pilling: 4 (EN ISO 12945-2)

Environmental facts: EU Ecolabel, Oeko-Tex® Standard 100, 100% free of heavy metals, ISO 14001 certified company

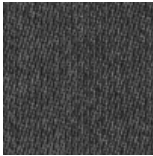
Design: Cenk Kivrikoglu

Produced in: Lithuania

Cleaning: Professional dry cleaning (For further info follow Gabriel's cleaning guidelines www.gabriel.dk)



STM66018



STM60011

STEELCUT 3 (KVADRAT) - PRICE GROUP 4

Steelcut 3 is a unicoloured strong worsted wool and polyamide woven fabric, combining durability, soft touch and colour depth. The construction creates a three-dimensional surface resembling small pyramids or steel points. Despite its complex weaving technique, it has a simple and precise expression.

Composition: 90% worsted new wool, 10% polyamide

Weight: 825 g/lm

Abrasion resistance: 100 000 Martindale (EN ISO 12947-2)

Flammability: BS EN 1021: 1-2 (Cigarette & match, CA TB 117-2013, BS 5852 Crib 5 (with treatment), BS 5852 part 1, IMO FTP Code 2010 Part 8, NF D 60 013, NFPA 260, UNI 9175 1IM, ÖNORM B1/Q1, AS/NZS 3837 Class 2, ASTM E84 Class A Unadhered, ASTM 84 Class B Adhered

Light fastness: 5 6 (EN ISO 105-B02)

Rubbing fastness: 3-5/4-5 (Wet/Dry) (EN ISO 105X12)

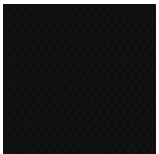
Pilling: 3-4 (EN ISO 12945-2)

Environmental facts: EU Ecolabel, 100% free of heavy metals, ISO 14001 certified company, GREENGUARD Gold

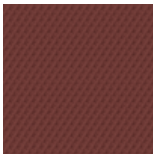
Design: Frans Dijkmeijer, Giulio Ridolfo (updated colourways)

Produced in: United Kingdom

Cleaning: Professional dry cleaning with tetrachloroethylene, normal process (For further info follow Kvadrat's cleaning guidelines - www.kvadrat.dk)



STT190



STT655

STEELCUT TRIO 3 (KVADRAT) - PRICE GROUP 4

Steelcut Trio 3 is a strong worsted wool and polyamide woven fabric, made with three different coloured yarns. The colours and the special weave create a three-dimensional surface where the colours seem to change depending on the angle of perspective. Like Steelcut 3, despite the complexity of the textile's innovative weave, it has a simple, precise expression.

Composition: 90% worsted new wool, 10% polyamide

Weight: 770 g/lm

Abrasion resistance: 100 000 Martindale (EN ISO 12947-2)

Flammability: BS EN 1021: 1-2 (Cigarette & match, CA TB 117-2013, BS 5852 Crib 5 (with treatment), BS 5852 part 1, BS 5852 ignition source 3, IMO FTP Code 2010 Part 8, NF D 60 013, NFPA 260, UNI 9175 1IM, ÖNORM B1/Q1, AS/NZS 3837 Class 2, GB 50222 B1 with treatment (Chinese)

Light fastness: 6-7 (EN ISO 105-B02)

Rubbing fastness: 3-5/4-5 (Wet/Dry) (EN ISO 105X12)

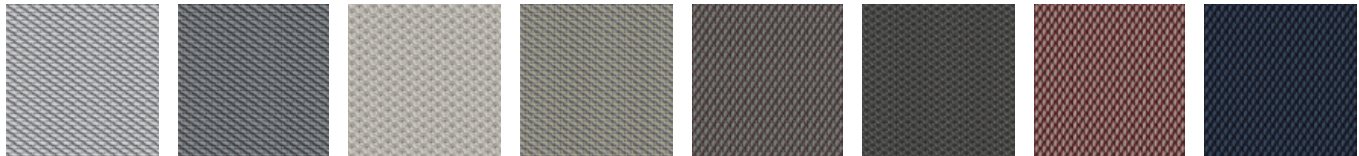
Pilling: 4 (EN ISO 12945-2)

Environmental facts: EU Ecolabel, 100% free of heavy metals, ISO 14001 certified company, GREENGUARD Gold

Design: Frans Dijkmeijer, Giulio Ridolfo (updated colourways)

Produced in: United Kingdom

Cleaning: Professional dry cleaning with tetrachloroethylene, normal process (For further info follow Kvadrat's cleaning guidelines - www.kvadrat.dk)



STT133

STT153

STT213

STT253

STT276

STT383

STT645

STT796

LEATHER NATURA (ICA) - PRICE GROUP 6

Leather Natura is a premium quality through-dyed leather from bull hides. It has a textured grainy surface with a soft touch.

Thickness: 1,1-1,3

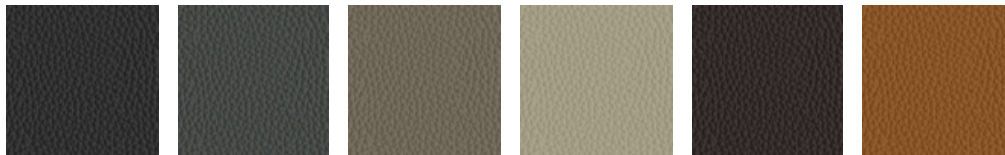
Flammability: EN 1021 part 1+2, BS 5852 part 1 sources 0 and 1, California TB117 A/1 and E/1

Light fastness: 5 (EN ISO 105 - B02)

Rubbing fastness: 4/4 (Wet/Dry) (EN ISO 11-640)

Environmental facts: ISO 14001 certified company

Produced in: Italy



LE120

LE121

LE122

LE123

LE124

LE125

ELMOSOFT (ELMO) - PRICE GROUP 7

Elmosoft is a chrome free supreme quality semi-aniline grain leather from Scandinavian cattle. It is soft and pliable with an outstanding comfort and durability. Visible insect-bites and scars from healed wounds add to the authentic quality and character of the leather.

Thickness: 1.1 - 1.3 mm

Flammability: BS EN 1021: 1-2 (Cigarette & match), BS 5852 Crib 5, CA TB 117-2013, DIN 4102 -1 (B1), IMO 2010 FTP Code Part 8 (IMO652), UNI 9175, Önorm B 3825, UNI 9175

Light fastness: 6 (EN ISO 105-B02)

Rubbing: Wet 80/4 - Dry 2000/4 - Sweat 50/4 - ISO 11640

Finish-adhesion: ≥ 2 N/cm - ISO 11644

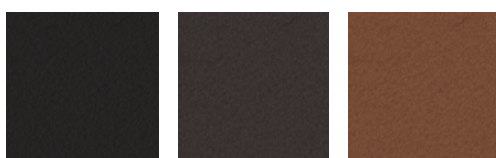
Tear-strength: ≥ 20 N/cm DIN 53329-A

Environmental facts: Free of heavy metals, tanned without using chromium salts, ISO 14001 certified company, Clean water tanning technology with biological Water Treatment Plant and 100% CO2 neutral on energy.

Animal Welfare: All hides are by-products from the meat and dairy industries with traceability back to the farm, Following strict regulations on animal welfare in compliance with national and international standards as those issued by the World Organization for Animal Health (6 animal welfare freedoms)

Produced in: Sweden

Cleaning: (Follow the guidelines by our supplier - www.elmoleather.com)



EL99999

EL93068

EL33004

Product specific fabrics

This is Giroflex selection of special textiles for certain products.

Maintenance: To maintain fabrics and leather, please vacuum with a furniture brush or use a clean cloth or sponge slightly dampened with clean lukewarm water.

NOTE! Colours on screen or in print might differ from reality. Other colours than listed here are in our Extended colour collection and might fall into a different price group.

STRONG (JAB/CLIMATEX) - PRICE GROUP 3

Strong is a durable 24/7 fabric with a specially designed and constructed mix of natural and syntehtic fibers. Its honeycomb pattern creates depth and texture with a smothh touch.

Composition: 72% Cradura™ (PA), 16% Certified virgin wool (WV), 12% redesigned Lenzing FR™

Weight: 415 g/lm

Abrasion resistance: 500 000 Martindale (EN ISO 12947-2)

Flammability: EN 1021-1/2, BS 5852-0/1, CA TB 117-2013

Light fastness: 6-7 (EN ISO 105 - B02)

Rubbing fastness: 4-5/4-5 (Wet/Dry) (EN ISO 105X12)

Pilling: 4 (EN ISO 12945-2)

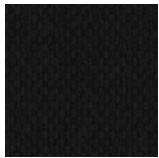
Perspiration fastness: 5/5 (alcaline/acid) (EN ISO 105-E04)

Environmental facts: Cradle to Cradle Certified™ silver, Oeko-Tex® Standard 100, recyclable

Design: Climatex Design team

Produced in: Germany

For giroflex 60 and giroflex 64- 24h chairs



STO099

SYNERGY QUILT HOURGLASS (CAMIRA)

Synergy Quilt is a wide width, quilted version of our soft-handle wool blend fabric, Synergy. Foam backing and wadding form the density of the quilt, with lighter shades being stitched in white thread and darker shades stitched in black thread, to create Channel, Chevron or Hourglass patterns.

Composition: 95% pure new wool, 5% nylon with polyester and polyurethane foam backing

Weight: 700 g/m2 ±10%

Abrasion resistance: 100 000 Martindale (EN ISO 12947-2)

Flammability: California Technical Bulletin 117 - 2013, CA TB 117-2013, NFPA 260 + UFAC Class 1, BS 7176 Low Hazard, ASTM E84 Class 2 or B (Adhered), ASTM E84 Class 2 or B (un-adhered)

Light fastness: 4 (AATCC-16) 5 (EN ISO 105 - B02)

Colour fastness: 3/4 (Wet/Dry) (AATCC-8)

Rubbing fastness: Wet: 4, Dry: 4 (EN ISO 105 - X12)

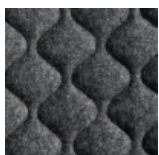
Environmental facts: Non metallic dyestuffs, ISO 14001 certified company

Design: Camira Design Studio

Produced in: United Kingdom

Cleaning & disinfection: Washable to 60 C and bleach cleanable (For further info follow Camira `s cleaning guidelines - www.camirafabrics.com)

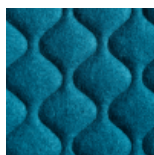
Only for giroflex 64-3578-QUI (Extended collection)



QSH17



QSH35



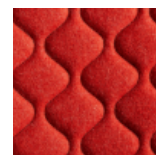
QSH59



QSH62



QSH69



QSH84

SOFTTOUCH

Softtouch is a self-supportive semi-translucent mesh fabric with a comfortable feel.

Composition: 76% polyester, 23% polyamide, 1% stainless steel

Abrasion resistance: 40 000 Martindale (EN ISO 12947-2)

Flammability: EN 1021 1

Light fastness: 5-7 (EN ISO 105 - B02)

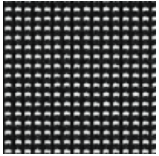
Rubbing fastness: 5/4 (Wet/Dry) (EN ISO 105X12)

Environmental facts: ISO 14001 certified company

Designed by: Krall & Roth design team

Produced in: Germany

Mesh fabric – only for backrest giroflex 68



N460

KNIT MESH

Knit161 is a self-supporting mesh, uniquely designed to conform to the backrest of the giroflex 161 visitor chair. The knit has a soft touch with a comfortable airy feel which offers comfort and support to the user. It's solid open structure has a repetitive organically shaped pattern with a visual depth in its texture.

Composition: 100% polyester

Abrasion resistance: 28 000 Martindale (EN ISO 12947-2)

Flammability: BS EN 1021 1&2 (Cigarette & Match), BS7176: 2007 low hazard

Light fastness: 6 (EN ISO 105 - B02)

Pilling: 4-5 (BS EN ISO 12945-2)

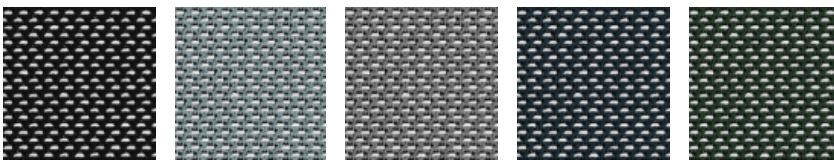
Environmental facts: EU Ecolabel, Oeko-Tex® Standard 100, 100% free of heavy metals

Design: Camira Technical Knitting team & Flokk Design team

Produced in: United Kingdom

Cleaning & disinfection: Bleach cleanable (For further info follow Camira's cleaning guidelines – www.camirafabrics.com)

Mesh only for giroflex 161-6403 and giroflex 161-6403-KNI



KNI099

KNI100

KNI101

KNI102

KNI104

NET – TRICOT

Net - Tricot is a shapeknitted self-supporting polyester fabric specially designed for the giroflex 434 mesh back models.

Composition: 100% polyester flame retardant (Trevira CS)

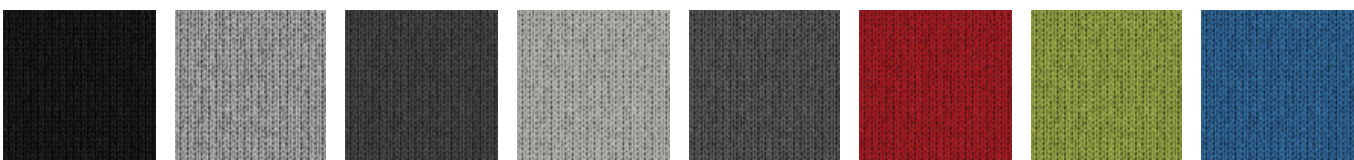
Abrasion resistance: 40 000 Martindale (EN ISO 12947-2)

Flammability: DIN 4102 B1, EN 1021 1&2, NF P 92501-7/M1

Light fastness: 4-5 (EN ISO 105 - B02)

Rubbing fastness: 4/4 (Wet/Dry) (EN ISO 105X12)

Mesh only for giroflex 434



N470

N471

N472

N473

N474

N475

N476

N477

Extended Fabric & Colour Collection

If you cannot find what you are looking for in our Standard or Curated collection, we also provide a wider selection of fabrics in various colours from different suppliers we collaborate with. The fabrics are tested and quality-approved to satisfy our requirements. Delivery time for giroflex Chairs upholstered with extended fabrics is 20-25 working days from factory, provided fabric is available at suppliers stock. Transport days to be added.

COM (Customer's Own Material)

Delivery time is more than 20 working days from factory and confirmation of order, transport in addition. Extra time for testing and approval of fabrics may also occur. Price group 3.

Special

Other fabrics. Prices and delivery on request.

SUPPLIER/COLLECTION	PRICE GROUP
Camira Fabrics - www.camirafabrics.com	
Oceanic*	3
Synergy Quilt Hourglass* ¹⁾	OR
Xtreme*	3
Climatex/Jab - www.climatex.jab.de	
Grano*	3
Strong* ³⁾	3
Elmo - www.elmoleather.com	
Elmosoft* ²⁾	OR
Gabriel - www.gabriel.dk	
Capture*	3
Cura*	3
Comfort+	5
Focus	3
Focus Melange	3
Gaja Classic*	3
Gaja C2C	3
Runner*	2
Select*	2
Step (Trevira CS)*	3
Step Melange (Trevira CS)*	3

SUPPLIER/COLLECTION	PRICE GROUP
ICA - www.icaleather.it	
Leather Natura*	6
Kvadrat - www.kvadrat.dk	
Steelcut 3*	4
Steelcut Trio 3*	4
Skai - www.skai.com	
Skai Palma*	2

* Non standard colours

OR = on request

¹⁾ = Only for giroflex 64 -3578 -QUI

²⁾ = Not for LAB/24H/cashier

³⁾ = Only for giroflex 60 and 64 -24h chairs



Flokk is the leading manufacturer of high-quality workplace furniture in Europe, with a strong foothold in North America, developing a growing family of global brands. We are the proud owner of product brands HÅG, Offecct, Giroflex, RH, Profim, Stylex, 9to5 Seating, Connection and Malmstolen. A structured focus on the environment through several decades has enabled us to be a leader in the development of sustainable furniture.

Our head office is in Oslo, Norway, with main production sites in Røros (Norway), Nässjö (Sweden), Turek (Poland), Huddersfield (UK) Delanco NJ (USA) and Hawthorne CA (USA). In addition, we keep sales offices in Norway, Sweden, Denmark, Germany, Belgium, the Netherlands, UK, France, Switzerland, Singapore, USA, Canada, China and Australia. Flokk products are sold in more than 80 countries worldwide. About 1800 employees work together to realise the vision of Flokk:
Inspire great work.

Flokk A/S
Sorgenfrivej 18
DK - 2800 Kongens Lyngby

Phone: +45 99 50 55 00
E-mail: info-dk@flokk.com
www.flokk.com