

Fabrics & Finishings 2025

Oddajemy w Państwa ręce poszerzony wzornik tkanin. Odświeżona paleta oferty standardowej tworzy nowy nastrój kolorystyczny marki Profim, a pełne karty (producentckie) wybranych tkanin pozwalają na dobór idealnego dla mebla odcienia. Tworzenie harmonijnych wnętrz jest teraz jeszcze łatwiejsze.

We would like to present a book of our extended fabric collection. The refreshed palette of the standard offer creates a new colour concept for the Profim brand and full (fabric producer's) cards of selected fabrics enable the selection of an ideal shade to match the furniture. Creating harmonious interiors is now even easier.

Wir freuen uns unsere erweiterte Stoffkollektion vorstellen zu können. Das Standardangebot wurde überarbeitet und aufgefrischt und durch ausgewählte Stoffe (jeweils gesamte Farbkarte) der Hersteller erweitert. Dadurch lassen sich Räume noch individueller gestalten.

0	Alba	3005 • 6026 • 6031 • 7026 • 8003 • 8010 • 8033 • 8078
	Evo	EV-1 • EV-2 • EV-5 • EV-10 • EV-11 • EV-14 • EV-24 • EV-25
	Next	NX-1 • NX-7 • NX-10 • NX-11 • NX-12 • NX-14 • NX-15 • NX-16
1	Cura	60109 • 60110 • 60999 • 61168 • 62083 • 66165 • 66167 • 66170 • 68182 • 68186
	Medley	60003 • 60999 • 66007 • 67006
	Sprint	PS004 • PS010 • PS028 • PS030 • PS033 • PS039 • PS040 • PS041
	Tonal	60122 • 60124 • 60999 • 61180 • 64210 • 64211 • 67089 • 67090
	Valencia™	107-0002 • 107-0034 • 107-2107 • 107-2116 • 107-4003 • 107-4042 • 107-4045 • 107-9035
	Xtreme	YS009 • YS026 • YS047 • YS079 • YS081 • YS094 • YS096 • YS136 • YS145
2	Select	60003 • 60051 • 60132 • 60134 • 60139 • 60999 • 61184 • 61186 • 62097 • 65117 • 66071 • 66194 • 67097 • 67098 • 68209 • 68210
3	Capture	CPT4102 • CPT4301 • CPT4401 • CPT4601 • CPT5101 • CPT5103 • CPT5501 • CPT6001 • CPT6401 • CPT6601
	Oceanic	OOC01 • OOC04 • OOC06 • OOC08 • OOC11 • OOC12 • OOC13 • OOC14 • OOC16
	Step	60090 • 60091 • 60999 • 62057 • 63075 • 66152 • 67004 • 68161
	Synergy	LDS08 • LDS16 • LDS17 • LDS49 • LDS56 • LDS62 • LDS73 • LDS74
4	Steelcut 3	190 • 655
	Steelcut Trio 3	133 • 153 • 213 • 253 • 276 • 383 • 645 • 796
5	Skóra / Leather / Leder	S-16 • S-18 • S-21 • S-22 • S-27 • S-28
6	Skóra / Leather / Leder Premium	2180 • 2760 • 2840 • 2845 • 2875 • 2900
	Rhythm	Rhythm 60165 • Rhythm 60176 • Rhythm 60999 • Rhythm 63067 • Rhythm 66152 • Rhythm 68121
	Runner	Runner 60011 • Runner 60025 • Runner 60999
	String	String 60118 • String 60999

Alba Evo Next

FIDIVI*

TESSITURA VERGNANO

Standard Collection

profim

Alba

grupa
cenowa 0

3005	7026
6005	8003
6026	8010
6031	8078

Extended Collection

Wszystkie kolory poza standardowymi dostępne są z terminem realizacji 6-8 tygodni. Szczegóły wyceny dostępne są u właściwego RDS (Regionalnego Dyrektora Sprzedaży).

ALBA

ALBA



4007



4027



4004



4030



3005



2036



2005



1006



1011



5004



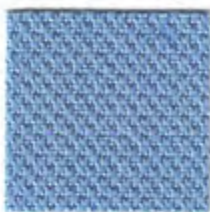
6071



6080



6098



6005



6026



6007



6031



7026



7011



7013



7029



8078



8003



8010



8033



COMPOSIZIONE
100% Poliestere

PESO
450 ± 5% g/ml
320 ± 5% g/m²

ALTEZZA
140 ± 2% cm

RESISTENZA ALL'ABRASIONE
(Martindale)
UNI EN ISO 12947/2
100.000 ± 10% cicli

PILLING
UNI EN ISO 12945/2
5 (foto standard)
Tolleranza: da 4 a 5

SOLIDITÀ ALLA LUCE
UNI EN ISO 105-B02
6 (scala blu)
Tolleranza: da 5 a 8

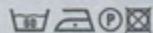
SOLIDITÀ ALLO SFREGAMENTO
UNI EN ISO 105-X12
4/5 (scala grigi)
Tolleranza: da 4 a 5

REAZIONI AL FUOCO
Può superare:
EN 1021/1-2
CRIB 5
BS 7176 Medium Hazard
California TB117
UNI 9175 Class 1IM

Il grado di resistenza al fuoco dipende dal tipo di schiuma utilizzata

COLORE
Leggere differenze di colore fra una partita e l'altra sono da considerarsi normali

MANUTENZIONE E LAVAGGIO



COMPOSITION
100% Polyester

WEIGHT
450 ± 5% g/ml
320 ± 5% g/m²

WIDTH
140 ± 2% cm

ABRASION RESISTANCE
(Martindale)
UNI EN ISO 12947/2
100.000 ± 10% rubs

PILLING
UNI EN ISO 12945/2
5 (standard pictures)
Tolerance: from 4 to 5

LIGHT FASTNESS
UNI EN ISO 105-B02
6 (blue scale)
Tolerance: from 5 to 8

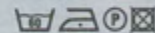
FASTNESS TO RUBBING
UNI EN ISO 105-X12
4/5 (grey scale)
Tolerance: from 4 to 5

FLAMMABILITY
Can meet:
EN 1021/1-2
CRIB 5
BS 7176 Medium Hazard
California TB117
UNI 9175 Class 1IM

Flame retardant performance is dependent upon the foam used

COLOUR
Slight color differences between one lot and another have to be considered within commercial tolerance

CLEANING AND WASHING



COMPOSITION
100% Polyester

POIDS
450 ± 5% g/ml
320 ± 5% g/m²

LARGEUR
140 ± 2% cm

RÉSISTANCE À L'ABRASION
(Martindale)
UNI EN ISO 12947/2
100.000 ± 10% tours

PILLING
UNI EN ISO 12945/2
5 (photos standard)
Tolérance: de 4 à 5

SOLIDITÉ À LA LUMIÈRE
UNI EN ISO 105-B02
6 (échelle des bleu)
Tolérance: de 5 à 8

SOLIDITÉ AU FROTTEMENT
UNI EN ISO 105-X12
4/5 (échelle des gris)
Tolérance: de 4 à 5

CLASSEMENT AU FEU
Peut surmonter:
EN 1021/1-2
CRIB 5
BS 7176 Medium Hazard
California TB117
UNI 9175 Class 1IM

Performance de flammabilité dépend de la mousse utilisée

COLORIS
Légères différences de couleur entre un lot et l'autre doivent être considérés comme étant normales

NETTOYAGE ET LAVAGE



ZUSAMMENSETZUNG
100% Polyestere

GEWICHT
450 ± 5% g/ml
320 ± 5% g/m²

BREITE
140 ± 2% cm

SCHEUERFESTIGKEIT
(Martindale)
UNI EN ISO 12947/2
100.000 ± 10% Scheuertouren

PILLING
UNI EN ISO 12945/2
5 (standard Bilder)
Toleranz: von 4 bis 5

LICHTECHTHEIT
UNI EN ISO 105-B02
6 (Blaumaßstabe)
Toleranz: von 5 bis 8

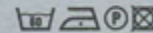
REIBECHTHEIT
UNI EN ISO 105-X12
4/5 (Graumaßstabe)
Toleranz: von 4 bis 5

FEUERSICHERUNG
Überwunden:
EN 1021/1-2
CRIB 5
BS 7176 Medium Hazard
California TB117
UNI 9175 Class 1IM

Schwerentflammbarkeit hängt von verwendetem schaum ab

FARBABWEICHUNGEN
Leichte Farbunterschiede sind zwischen zwei Partien als normal zu betrachten

REINIGUNG UND WASCHEN

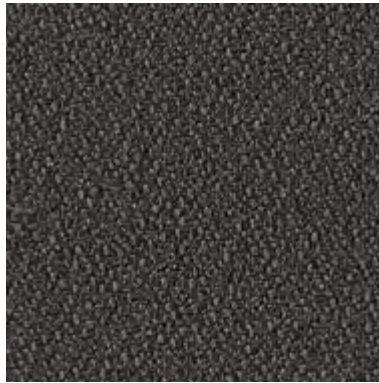


Standard Collection

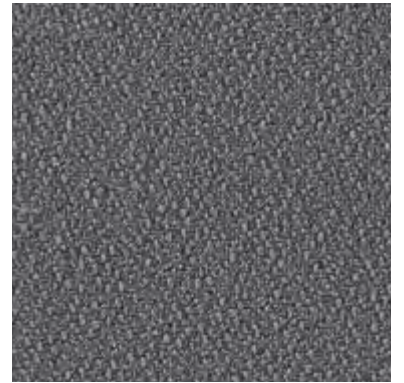
0 **Evo**



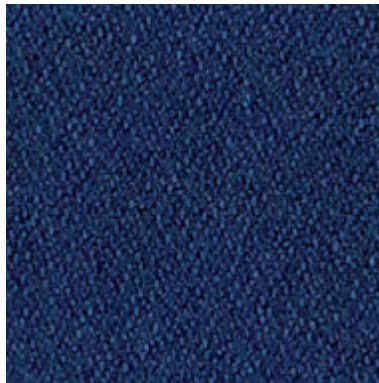
EV-11



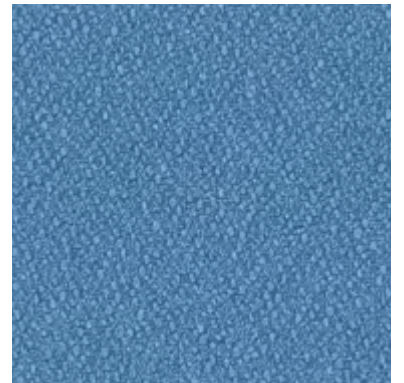
EV-1



EV-14



EV-10



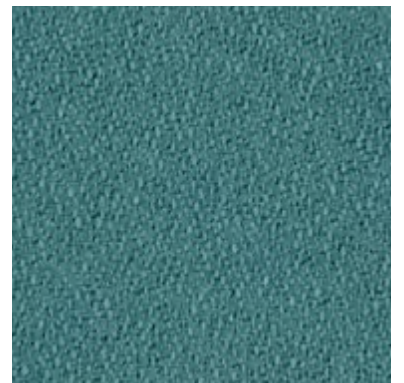
EV-25



EV-5



EV-2



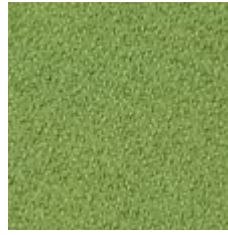
EV-24



EV-4



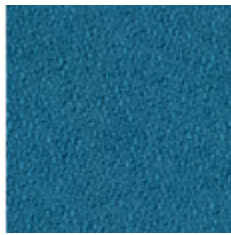
EV-19



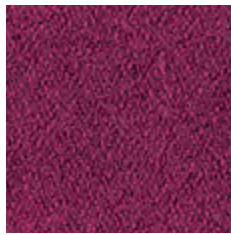
EV-20



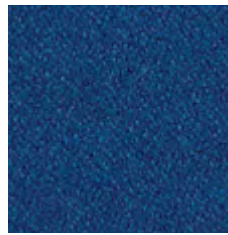
EV-18



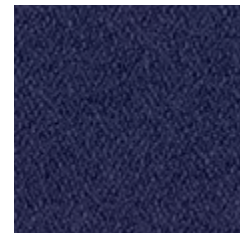
EV-23



EV-21



EV-9



EV-22

PL

Skład:
100% poliester

Gramatura:
320 g/m²

Odporność na ścieranie: 180000 cykli Martindale'a (BS EN ISO 12947-2), **Odporność na piling:** 5 (PN-EN ISO 12945-2), **Trudnozapałność – papieros:** EN 1021-1, **Trudnozapałność – zapalka:** EN 1021-2, **Odporność na światło:** 4-5 (EN ISO 105-B02), **Oznaczenie formaldehydu:** PN-EN ISO 14184-1, **Odporność barwy na rozpuszczalniki organiczne:** 5 (PN-EN ISO 105-X-05), **Odporność barwy na działanie potu:** 5 (PN-EN ISO 105-E04), **Oznaczenie zawartości związków azowych:** PN-EN 14362-1, **Odporność barwy na przesunięcie w szwie:** 4 mm, kat. A (PN-EN ISO 13936-2), **Odporność barwy na płamienie wodą:** 5 (BS EN ISO 105 E16)

Pielęgnacja:

- czyszczenie chemiczne: dopuszcza się użycie nadchlorku etylenu oraz wodnego roztworu węgla fluoru,
- czyszczenie mechaniczne: czyścić na całej powierzchni szmatką zwilżoną wodą

EN

Composition:
100% polyester

Weight:
320 g/m²

Abrasion resistance: 180000 Martindale cycles (BS EN ISO 12947-2), **Pilling resistance:** 5 (PN-EN ISO 12945-2), **Flammability – cigarette:** EN 1021-1, **Flammability – match:** EN 1021-2, **Light fastness:** 4-5 (EN ISO 105-B02), **Determination of formaldehyde:** PN-EN ISO 14184-1, **Colour fastness to organic solvents:** 5 (PN-EN ISO 105-X05), **Colour fastness to perspiration:** 5 (PN-EN ISO 105-E04), **Determination of azo dyes:** PN-EN 14362-1, **Colour fastness to rubbing:** 4-5 (PN-EN ISO 105-X12), **Slippage resistance:** 4 mm cat. A (PN-EN ISO 13936-2), **Colour fastness to water spotting:** 5 (BS EN ISO 105 E16)

Maintenance:

- dry cleaning: with tetrachloroethylene and water solution of carbonate fluoride,
- mechanical cleaning: clean on the whole surface with a damp cloth

DE

Zusammensetzung:
100% Polyester

Gewicht:
320 g/m²

Scheuerfestigkeit: 180000 Martindale Scheuertouren (BS EN ISO 12947-2), **Peelingfestigkeit:** 5 (PN-EN ISO 12945-2), **Brandschutz – Zigarettentest:** EN 1021-1, **Brandschutz – Streichholztest:** EN 1021-2, **Lichtechtheit:** 4-5 (EN ISO 105-B02), **Bestimmung des Gehaltes an Formaldehyd:** PN-EN ISO 14184-1, **Farbechtheit gegen organische Lösemittel:** 5 (PN-EN ISO 105-X05), **Farbechtheit gegen Schweiß:** 5 (PN-EN ISO 105-E04), **Nachweis der Verwendung bestimmter Azofarbstoffe mit und ohne Extraktion der Faser:** PN-EN 14362-1, **Farbechtheit gegen Reiben:** 4-5 (PN-EN ISO 105-X12), **Verfahren mit festgelegter Kraft:** 4 mm kat. A (PN-EN ISO 13936-2), **Farbechtheit gegen Wasserflecken auf Möbelbezugsstoffen:** 5 (BS EN ISO 105 E16)

Reinigung:

- chemische Reinigung: Flecken mit Enzymmittel behandeln
- mechanische Reinigung: nicht nur Flecken sondern die ganze Stofffläche mit einem Tuch anfeuchten und abwischen

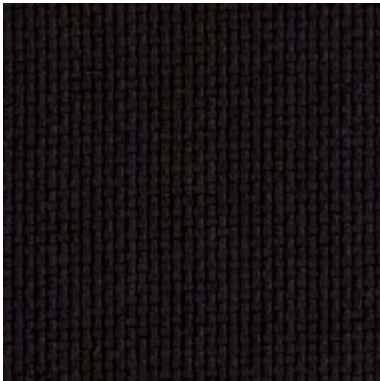
Przedstawione wzory wykończeń nie stanowią oferty w rozumieniu Kodeksu Cywilnego. W ramach stałego doskonalenia produktów firma zastrzega sobie prawo do wprowadzania zmian w ofercie.

The offer presented in the pattern book is not a valid legal offer. In policy of continuous product improvement our company reserves right to make changes at any time without prior notice.

Dieser Katalog ist kein Angebot im rechtlichen Sinn. Wir behalten uns Änderungen der Produkten im Sinne einer technischen Entwicklung oder Änderungen in Form und Farbe vor.

Standard Collection

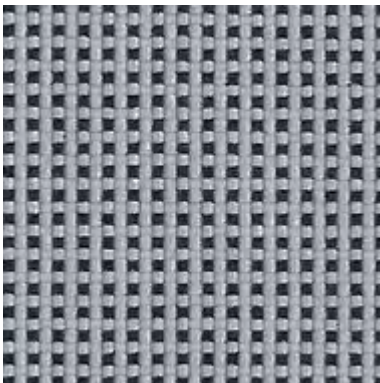
① Next



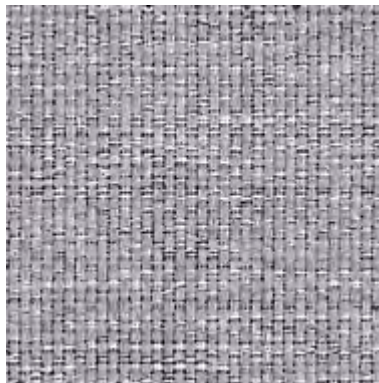
NX-16



NX-14



NX-12



NX-10



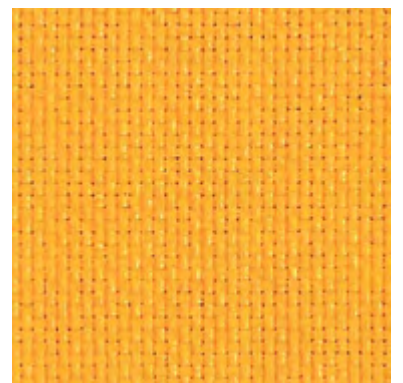
NX-15



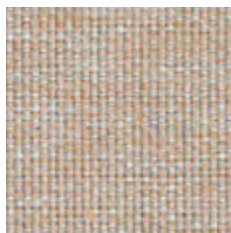
NX-11



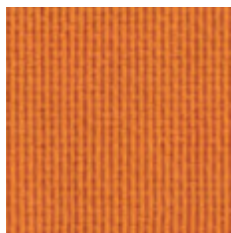
NX-7



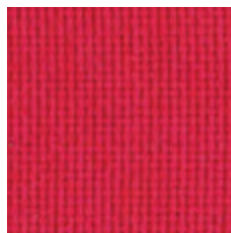
NX-1



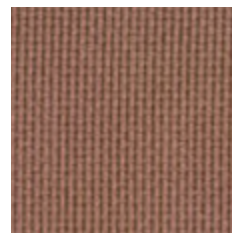
NX-2



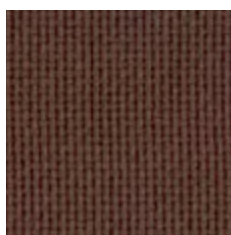
NX-3



NX-5



NX-6



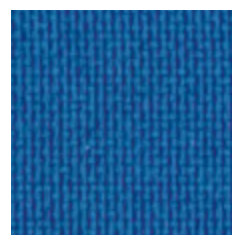
NX-8



NX-4



NX-9



NX-13

PL

Skład:
100% poliester

Gramatura:
340 g/m²

Oporność na ścieranie: 100000 cykli Martindale'a (PN-EN ISO 12947-2),
Oporność na piling: 5 (PN-EN ISO 12945-2), **Trudnozapałność – papieros:** PN-EN 1021-1, **Trudnozapałność – zapalnik:** PN-EN 1021-2, **Oporność na światło:** 5 (PN-EN ISO 105-B02)

Pielęgnacja:

- czyszczenie chemiczne: dopuszcza się użycie nadchloru etylenu oraz wodnego roztworu węgla fluoru,
- czyszczenie mechaniczne: czyścić na całej powierzchni szmatką zwilżoną wodą,
- nie moczyć miejscowo,
- chronić od bezpośredniego działania słońca,
- odkurzać regularnie w delikatny sposób,
- nie należy szorować ani używać twardej szczotki,
- nie używać detergentów do mycia naczyń ani prania,
- suszyć w cieniu, z daleka od źródeł ciepła

EN

Composition:
100% polyester

Weight:
340 g/m²

Abrasion resistance: 100000 Martindale cycles (PN-EN ISO 12947-2), **Pilling resistance:** 5 (PN-EN ISO 12945-2), **Flammability – cigarette:** PN-EN 1021-1, **Flammability – match:** PN-EN 1021-2, **Light fastness:** 5 (PN-EN ISO 105-B02)

Maintenance:

- dry cleaning: with tetrachloroethylene and water solution of carbonate fluoride,
- mechanical cleaning: clean on the whole surface with a damp cloth
- do not soak locally
- protect from direct sun
- vacuum regularly using low suction
- don't scrub or use stiff brush
- don't use dishwashing or laundry detergents
- dry in the shade, away from direct heat

DE

Zusammensetzung:
100% Polyester

Gewicht:
340 g/m²

Scheuerfestigkeit: 100000 Martindale Scheuertouren (PN-EN ISO 12947-2), **Peelingfestigkeit:** 5 (PN-EN ISO 12945-2), **Brandschutz – Zigarettentest:** PN-EN 1021-1, **Brandschutz – Streichholztest:** PN-EN 1021-2, **Lichtechtheit:** 5 (PN-EN ISO 105-B02)

Reinigung:

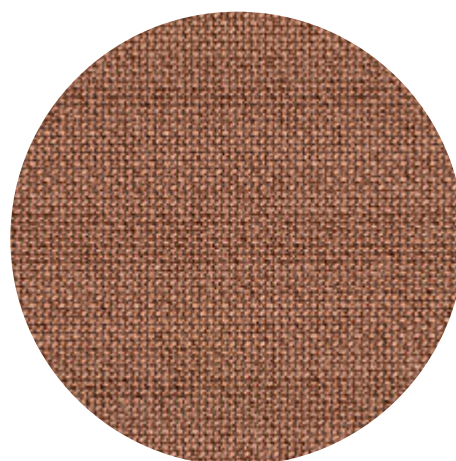
- chemische Reinigung: Flecken mit Enzymmittel behandeln
- mechanische Reinigung: nicht nur Flecken sondern die ganze Stofffläche mit einem Tuch anfeuchten und abwischen,
- vor Sonneneinstrahlung schützen
- regelmäßig absaugen
- keine Lösungsmittel und Detergentien anwenden
- im Schatten abtrocknen

Przedstawione wzory wykończeń nie stanowią oferty w rozumieniu Kodeksu Cywilnego. W ramach stałego doskonalenia produktów firma zastrzega sobie prawo do wprowadzania zmian w ofercie.

The offer presented in the pattern book is not a valid legal offer. In policy of continuous product improvement our company reserves right to make changes at any time without prior notice.

Dieser Katalog ist kein Angebot im rechtlichen Sinn. Wir behalten uns Änderungen der Produkten im Sinne einer technischen Entwicklung oder Änderungen in Form und Farbe vor.

Cura
Medley
Sprint
Tonal
ValenciaTM
Xtreme



CURA

by Gabriel

Standard Collection

profim

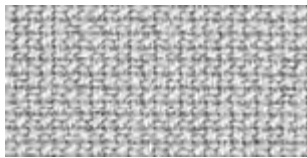
Cura

grupa
cenowa ①

60109	66165
60110	66167
60999	66170
61168	68182
62083	68186

Extended Collection

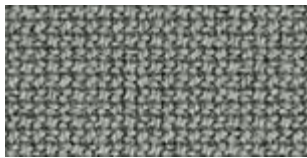
Wszystkie kolory poza standardowymi dostępne są z terminem realizacji 6-8 tygodni. Szczegóły wyceny dostępne są u właściwego RDS (Regionalnego Dyrektora Sprzedaży).



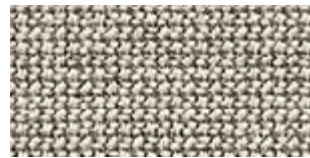
60000



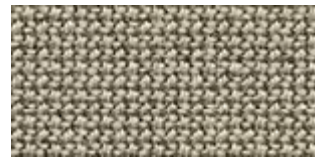
61232



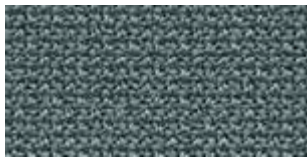
60327



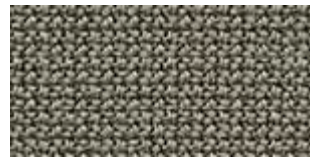
60112



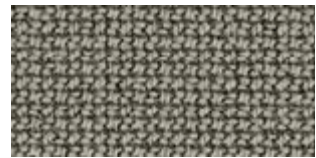
61168



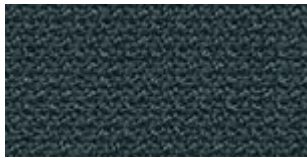
66166



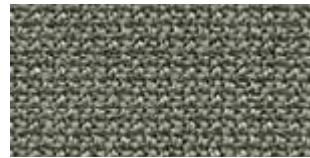
60110



61259



66165



60109



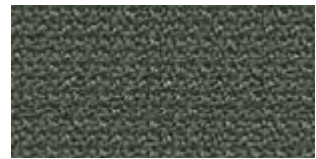
61169



60111



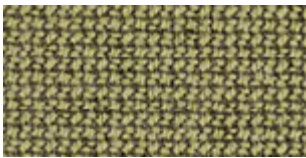
60999



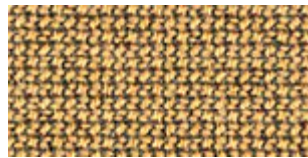
60019



62125



62126



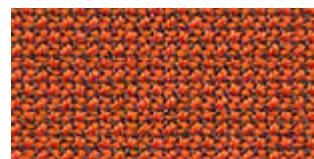
61233



62084



61260



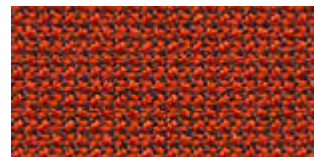
63078



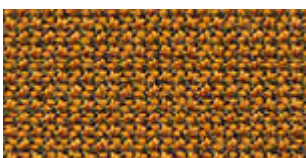
62083



61257



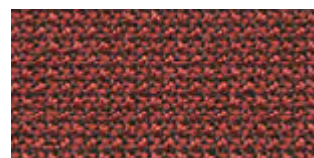
63012



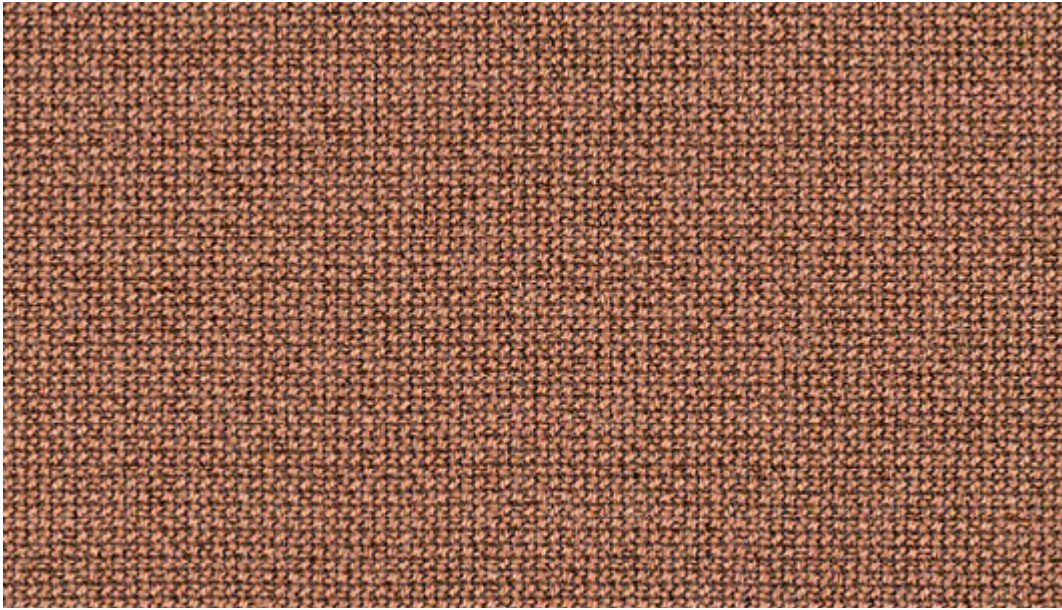
62082



61258



64196



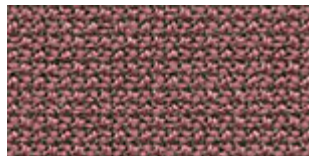
61257



64240



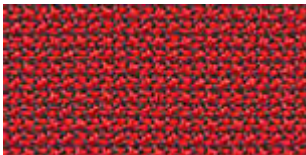
64197



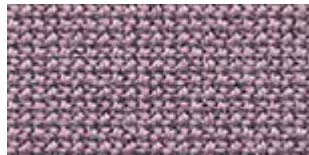
64195



66239



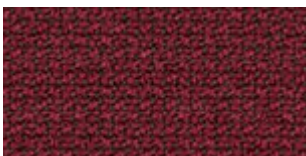
64013



64194



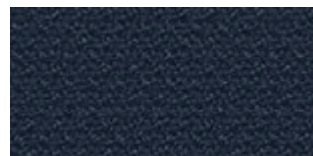
65105



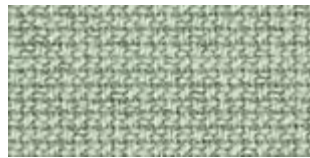
64252



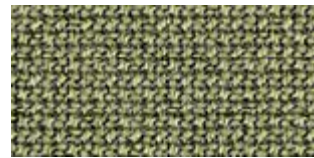
65137



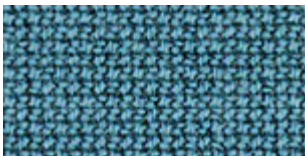
66169



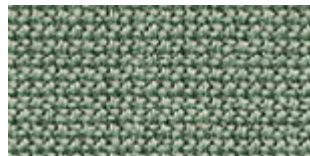
68262



68261



66240



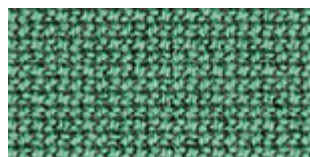
68186



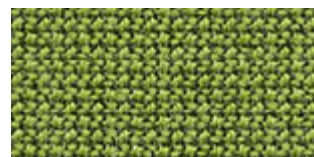
68181



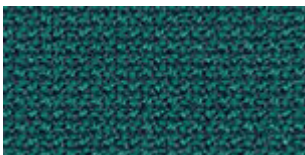
66167



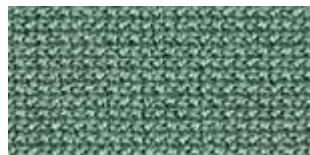
68263



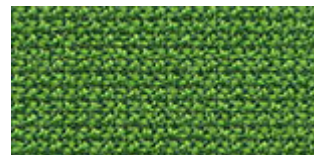
68180



67084



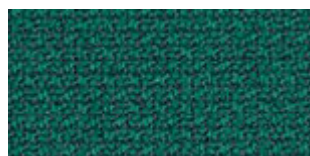
68187



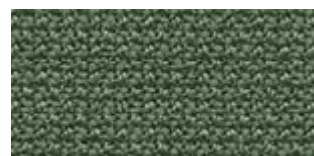
68183



66170



68264

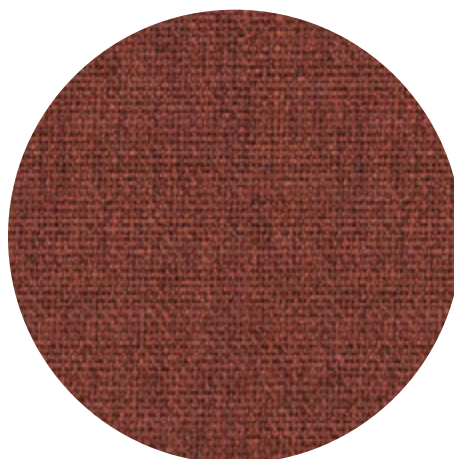


68182

CURA

Cura specifications: www.gabriel.dk

Please be aware that the PDF colour shades can appear different from the real fabric colours.
We advise you to request actual fabric samples before ordering.



MEDLEY™

by Gabriel

Standard Collection

profim

Medley

grupa
cenowa ①

60003
60999
66007
67006

Extended Collection

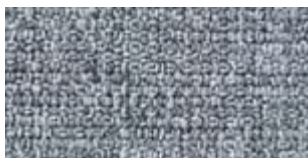
Wszystkie kolory poza standardowymi dostępne są z terminem realizacji 6-8 tygodni. Szczegóły wyceny dostępne są u właściwego RDS (Regionalnego Dyrektora Sprzedaży).



60003



61189



66008



62054



60167



61002



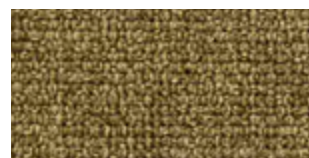
62002



60004



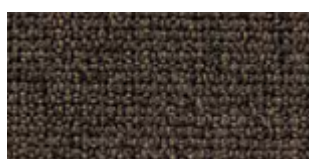
61003



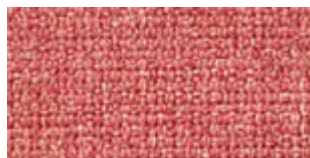
67002



60999



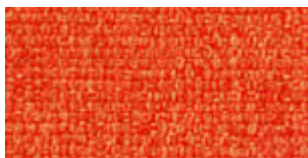
61004



63064



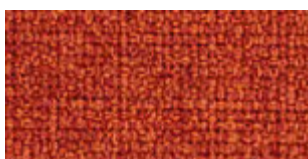
65011



63013



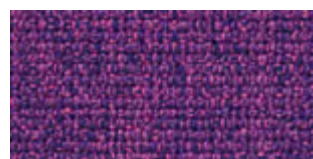
64019



63017



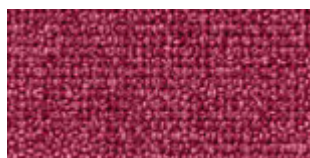
64124



65012



63016



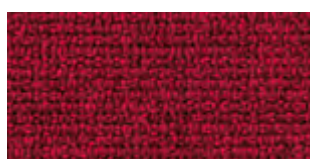
64125



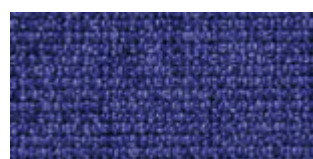
65086



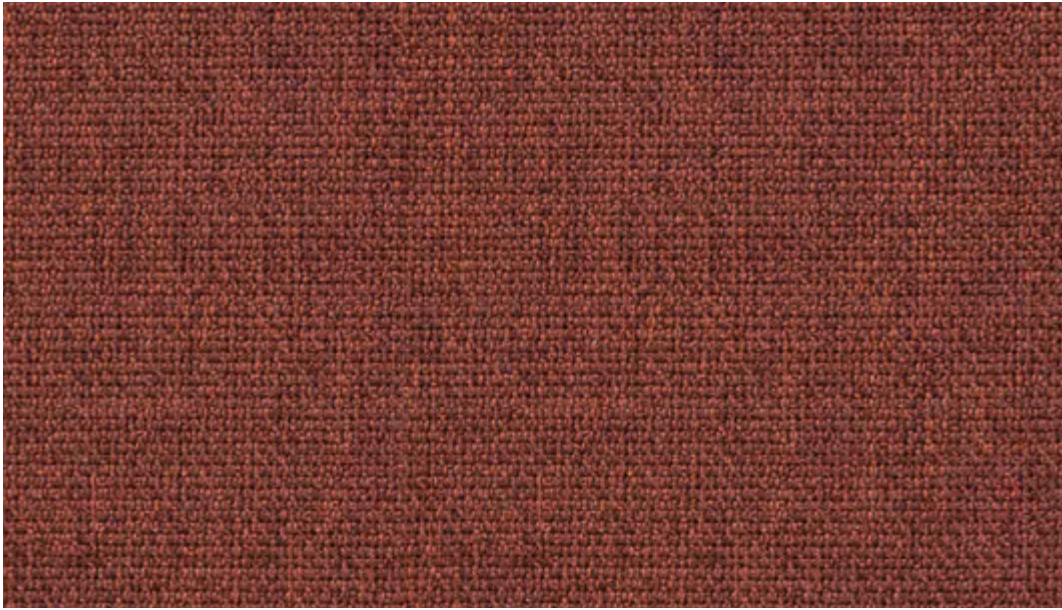
63063



64123



66145



63063



68114



67052



67006



68115



66009



67054



66144



67053



68002



66010



66007



68005

MEDLEY™

Medley specifications: www.gabriel.dk

Please be aware that the PDF colour shades can appear different from the real fabric colours.
We advise you to request actual fabric samples before ordering.

Sprint

camira

Standard Collection

profim

Sprint

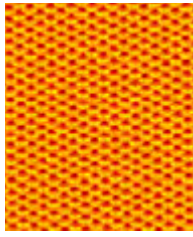
grupa cenowa ①

PS004	PS033
PS010	PS039
PS028	PS040
PS030	PS041

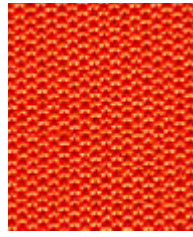
Extended Collection

Wszystkie kolory poza standardowymi dostępne są z terminem realizacji 6-8 tygodni. Szczegóły wyceny dostępne są u właściwego RDS (Regionalnego Dyrektora Sprzedaży).

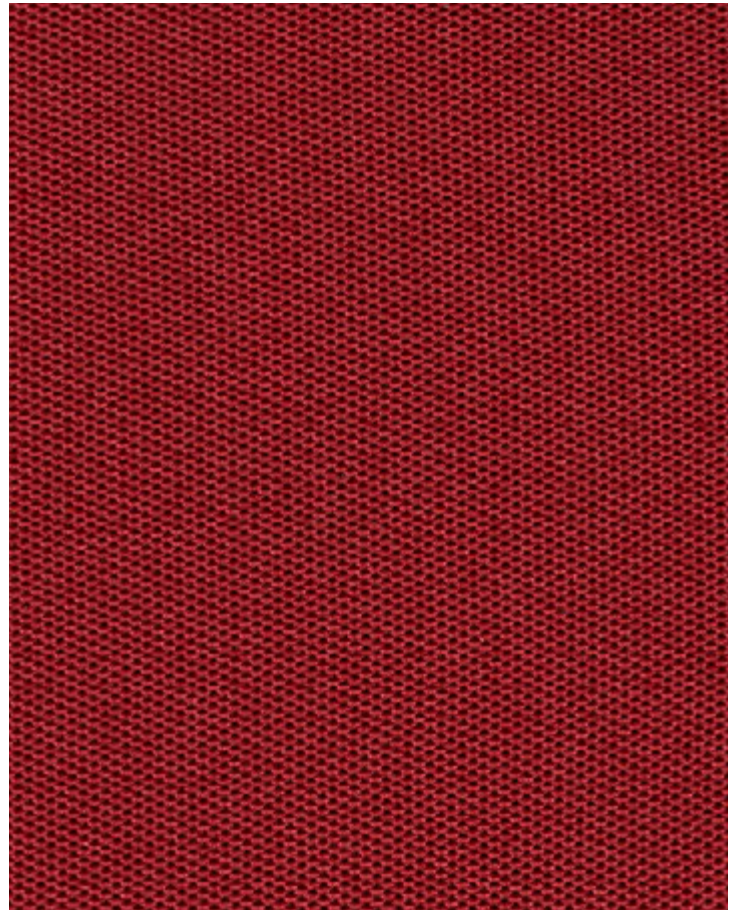
Photographic fabric scans are not colour accurate. Always request actual fabric samples before ordering.



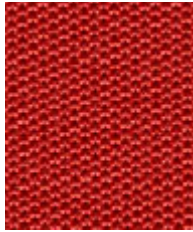
Gold
PS015



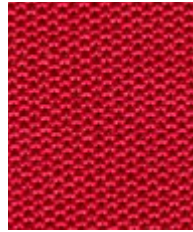
Plunge
PS016



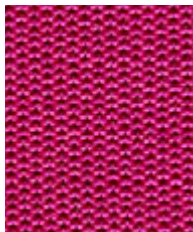
Finish
PS011



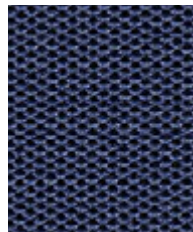
Start
PS010



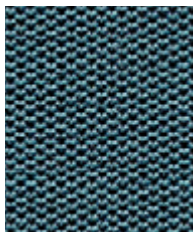
Runner
PS017



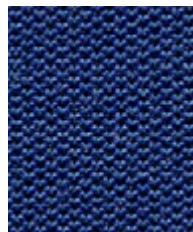
Ready
PS018



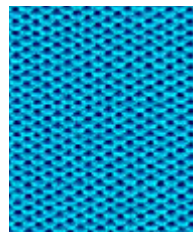
Line
PS033



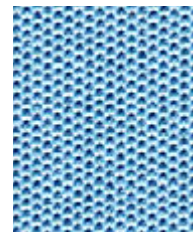
Competitor
PS040



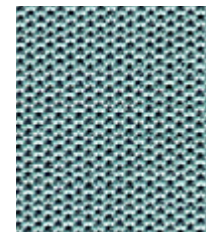
Heat
PS038



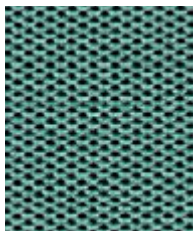
Victory
PS032



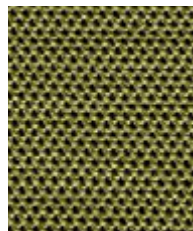
Stretch
PS031



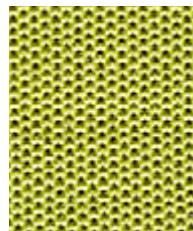
Nutrition
PS039



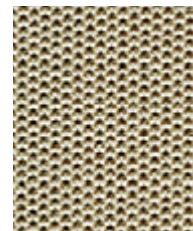
Champion
PS041



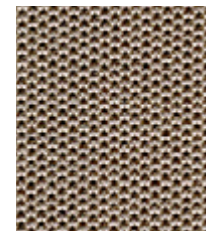
Train
PS027



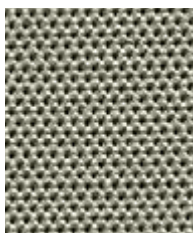
Energy
PS026



Hurdle
PS001



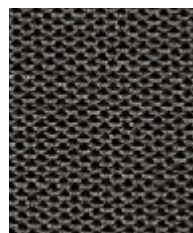
Relay
PS002



Silver
PS028



Block
PS029



Speed
PS030



Exercise
PS025



Chase
PS004



Task seating



Cigarette & Match



Washable



Bleach cleanable



Year guarantee

Sprint is a classic stretch knit product with a smooth macro cellular construction and a classic design that will stand the test of time. Sprint has multi-directional stretch for excellent upholstery on task chair bases and backs.

The flexibility and performance of this fabric was inspired by dynamic sportswear reflecting our pride in hosting the London 2012 Olympics and the endurance of the winning Team GB!



Technical information

UK

Composition
100% Polyester

Environment
Certified to Indoor Advantage™ Gold
Non metallic dyestuffs

Width
150 cm minimum

Weight
325 g/m² ±5% (488 g/lin.m ±5%)

Abrasion Resistance*
Heavy duty / 10 year guarantee
Independently certified to ≥100,000
Martindale cycles

Flammability
EN 1021 - 1 (cigarette)
EN 1021 - 2 (match)
BS 7176 Low Hazard
UNI 9175 Classe 1 IM
BS 476 Part 7 Class 1 (Adhered)
EN 13501-1 Un-adhered Class B, s1, d0
Note: Flammability performance is dependent on components used. Our certificates show what substrates have been used in our tests. For composite tests customers must ensure their complete furniture meets the necessary standards.

Light Fastness
5 (ISO 105 - B02)

Fastness to Rubbing
Wet: 4, Dry: 4 (ISO 105 - X12)

Bleach Cleanable
ISO 105 E03 colour change 4 for dilution factor 1:4 chlorine solution

Cleaning
Vacuum regularly. Wipe with a damp cloth using a proprietary upholstery shampoo/ soap. For deeper cleaning use steam, bleach, alcohol or professionally dry clean. Can be washed at 60°C. Full details can be found in our cleaning and disinfection guide.

*Abrasion testing produces a wide variability of results even from the same test sample. The independent certificate of ≥100,000 cycles is available on our website or from our customer service team. Internally we also specify this product at >100,000 cycles which we believe is realistic for repeatability of testing. Please be aware that abrasion testing alone is not a reliable indicator of the actual wear performance of fabrics. We're so confident in the durability of our products that we provide a robust 10 year guarantee (full details available).

Please note that seam performance is dependent on seam construction and needle and thread type. We recommend that appropriate sewing advice be taken.

Batch to batch variations in shade may occur within commercial tolerances. We reserve the right to alter technical specifications without notice. The Unregistered Design Rights and the Copyright in all designs are the exclusive property of Camira Fabrics Limited.

D

Zusammensetzung
100% Polyester

Umweltfreundlich
Nach Zertifikat Indoor Advantage™ Gold
Nicht schwermetallhaltige Farbstoffe

Breite
150 cm nutzbare Breite

Gewicht
325 g/m² ±5% (488 g/ldf.m ±5%)

Scheuerfestigkeit*
Schwerer Objektsatz / 10 Jahre
Garantie
Extern zertifiziert mit ≥100,000
Scheuertouren Martindale

Feuersicherung
EN 1021 - 1 (Zigarettestest)
EN 1021 - 2 (Streichholztest)
BS 7176 Low Hazard
UNI 9175 Classe 1 IM
BS 476 Part 7 Class 1 (Adhered)
EN 13501-1 Un-adhered Class B, s1, d0
Bemerkung: Die Schwerentflammbarkeit hängt von den verwendeten Komponenten ab. Unsere Zertifikate zeigen auf, welche Substrate bei den Tests verwendet wurden. Bei Verbundtests muss sichergestellt sein, daß das komplette Möbel den entsprechenden Standards entspricht.

Lichtechtheit
5 (ISO 105 - B02)

Reibechtheit
Nass: 4, Trocken: 4 (ISO 105 - X12)

Chlorbleiche-Beständig
ISO 105 E03 Farbänderung 4 bei einer 1:4 verdünnten Chlor-Lösung

Reinigung
Regelmässig absaugen. Mit einem feuchten Tuch abwischen oder mit einem geeigneten Polstershampoo behandeln. Für eine Grundreinigung bitte Dampf, Chlorbleiche, Alkohol oder professionelle Trockenreinigung verwenden. Kann bei 60°C gewaschen werden. Weitere Informationen finden Sie in unserem Leitfaden zur Reinigung und Desinfektion.

*Die Scheuerfestigkeitsprüfung ergibt selbst bei gleichen Testmustern stark abweichende Ergebnisse. Das Zertifikat eines unabhängigen Prüfinstitutes über ≥100,000 Scheuertouren erhalten Sie von unserem Vertriebsinnendienst oder auf unserer Webseite. Intern spezifizieren wir auch dieses Produkt mit >100,000 Scheuertouren, die in der Serienfertigung als realistisch angenommen werden. Bitte nehmen Sie zur Kenntnis, dass die Scheuerfestigkeitsprüfung allein keine Aussagekraft über die Langlebigkeit eines Bezugsstoffes hat. Wir sind von der Langlebigkeit unserer Produkte überzeugt und bieten daher 10 Jahre Garantie (Details auf Anfrage).

Eine optimale Nahtausreissfestigkeit hängt von der Nahtfahne, der verwendeten Nadel und dem Näh-Garn ab. Wir empfehlen daher Nähversuche durchzuführen.

Handelsübliche Farbabweichungen können auftreten und berechtigen nicht zur Reklamation. Wir behalten uns die Änderung technischer Spezifikationen vor. Die registrierten und nicht registrierten Urheberrechte der Dessinierungen sind ausschliessliches Eigentum der Camira Fabrics Limited.

F

Composition
100% Polyester

Écologique
Certifié à Indoor Advantage™ Gold
Teintures non métalliques

Largeur
150 cm minimum

Poids
325 g/m² ±5% (488 g/m.l ±5%)

Résistance à l'abrasion*
Usage intense / garantie 10 ans
Certificat indépendant ≥100,000
cycles Martindale

Flammabilité
EN 1021 - 1 (cigarette)
EN 1021 - 2 (allumette)
BS 7176 Low Hazard
UNI 9175 Classe 1 IM
BS 476 Part 7 Class 1 (Adhered)
EN 13501-1 Un-adhered Class B, s1, d0
Note: La performance de flammabilité dépend des composantes utilisées. Nos certificats indiquent les substrats utilisés dans nos tests. Pour les tests composites, les clients doivent s'assurer que leurs meubles complets satisfont aux normes nécessaires.

Solidité à la lumière
5 (ISO 105 - B02)

Solidité au Frottement
Mouillé: 4, Sec: 4 (ISO 105 - X12)

Nettoyable au javel
ISO 105 E03 changement de couleur 4 pour le facteur de dilution 1: 4 solution de chlore

Nettoyage
Passez l'aspirateur régulièrement. Essayez avec un chiffon humide en utilisant un shampooing/savon pour tissus d'ameublement exclusif. Pour un nettoyage en profondeur, utilisez la vapeur, javel, alcool ou un nettoyage à sec professionnel. Peut être lavé à la machine, programme maximum 60°C. Vous trouverez tous les détails dans notre guide de nettoyage et de désinfection.

*Les tests de résistance à l'abrasion proposent une large variété de résultat final, parfois sur le même échantillon de tissu. Le certificat indépendant de ≥100,000 cycles est disponible sur notre site internet; vous pouvez également contacter notre Service Clients. Nous validons également – en interne – à >100,000 cycles; ce qui est, d'après nous, plus réaliste dans le but d'obtenir une continuité égale des résultats de tests. Merci de noter que l'abrasion seule ne constitue pas un indicateur de confiance dans la performance du tissu à long terme. Nous avons une confiance absolue en nos produits et leur durabilité, c'est pour cela que nous vous offrons une garantie robuste de 10 ans.

Veuillez noter que la performance du joint dépend de sa construction ainsi que de l'aiguille et du type de fil utilisés.

Une variation de couleurs peut provenir (commercialement tolérable). Nous réservons le droit de changer les spécifications techniques sans préavis. Les Droits de Conception non-enregistrés et les droits d'auteur de tous les motifs sont la propriété exclusive de Camira Fabrics Limited.

ES

Composición
100% Poliéster

Ambiental
Certificado de Indoor Advantage™ Gold
Tintes no metálicos

Ancho
150 cm mínimo

Peso
325 g/m² ±5% (488 g/lin.m ±5%)

Resistencia a la abrasión*
Garantía de 10 años con uso intenso
independientemente del certificado de
≥100,000 Ciclos Martindale

Inflamabilidad
EN 1021 - 1 (cigarillo)
EN 1021 - 2 (cerilla)
BS 7176 Low Hazard
UNI 9175 Classe 1 IM
BS 476 Part 7 Class 1 (Adhered)
EN 13501-1 Un-adhered Class B, s1, d0
Nota: El rendimiento de la inflamabilidad depende de los componentes usados. Nuestros certificados muestran que substratos se han usado en nuestros tests. Para tests compuestos nuestros clientes deben asegurar si sus muebles cumplen la normativa al uso.

Solidez a la luz
5 (ISO 105 - B02)

Solidez al rozamiento
Húmedo: 4, Seco: 4 (ISO 105 - X12)

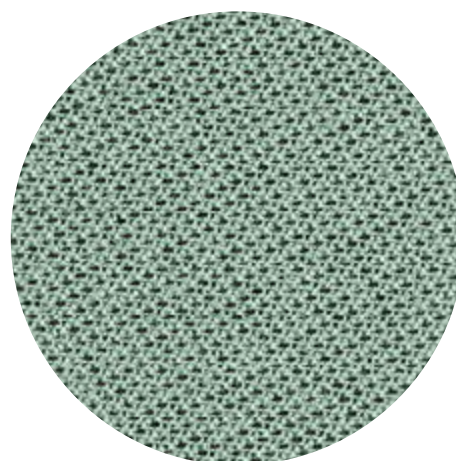
Posibilidad lavado con Lejía
ISO 105 E03 cambio color 4 para un factor de disolución 1:4 solución cloro

Limpieza
Uso aspirador regularmente. Limpiar con un trapo usando jabón y agua o producto limpieza para tapicerías. Para una limpieza más profunda usar vapor, lejía, alcohol o limpieza en seco. Se puede lavar a 60°C. Los detalles completos se encuentran en nuestra guía de limpieza y desinfección.

*Los Test de Abrasión producen unos resultados muy variables incluso con la misma muestra. El certificado de ≥100,000 ciclos Martindale está disponible en nuestra web o se puede pedir al Departamento Comercial. Internamente también certificamos este producto >100,000 ciclos, que pensamos que es lo más realista posible en este caso, con una repetición de resultados tan dispares. Tengan en cuenta que el Test de Abrasión solo no es un indicador fiable sobre el desgaste de un tejido. De hecho, estamos tan convencidos en la durabilidad de nuestros tejidos, que ofrecemos una garantía de 10 años (detalles completos disponibles).

Tenga en cuenta que el rendimiento de la costura depende de la construcción de la costura, además de la aguja y del tipo de rosca. Le recomendamos que se aconsejen para coser la costura.

Las variaciones de lote a lote en la sombra se puede producir dentro de tolerancias comerciales. Nos reservamos el derecho a efectuar modificaciones técnicas sin previo aviso. Los derechos sobre los diseños no registrados y los derechos de autor en todos los diseños son propiedad exclusiva de Camira Fabrics Limited.



TONAL™

by Gabriel

Standard Collection

profim

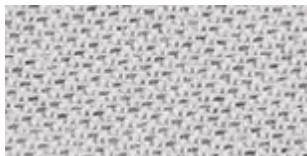
Tonal

grupa
cenowa ①

60122	64210
60124	64211
60999	67089
61180	67090

Extended Collection

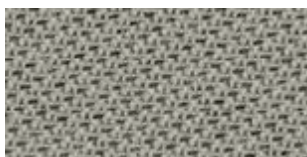
Wszystkie kolory poza standardowymi dostępne są z terminem realizacji 6-8 tygodni. Szczegóły wyceny dostępne są u właściwego RDS (Regionalnego Dyrektora Sprzedaży).



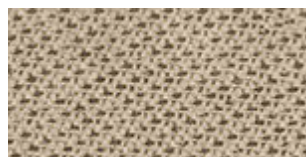
140 cm: 2490-60122
170 cm: 2495-60122



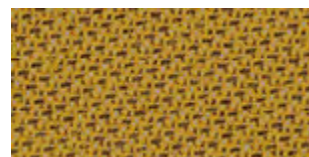
140 cm: 2490-61179
170 cm: 2495-61179



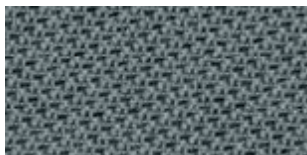
140 cm: 2490-60123
170 cm: 2495-60123



140 cm: 2490-61180



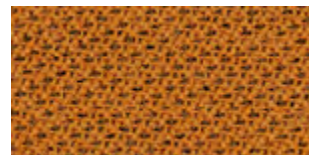
140 cm: 2490-62057



140 cm: 2490-60124
170 cm: 2495-60124



140 cm: 2490-61181



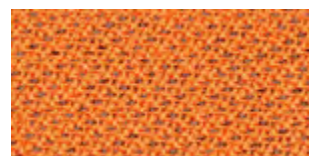
140 cm: 2490-63098



140 cm: 2490-60999
170 cm: 2495-60999



140 cm: 2490-61182



140 cm: 2490-63097

All colours are available in width 140 cm/55". 10 colours are also available in width 170 cm/67".
Contact customer service for other colours.



140 cm: 2490-64207



140 cm: 2490-64208



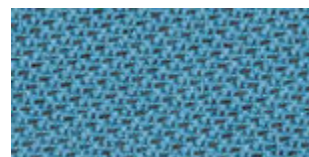
140 cm: 2490-64209



140 cm: 2490-64210
170 cm: 2495-64210



140 cm: 2490-64211



140 cm: 2490-66183
170 cm: 2495-66183

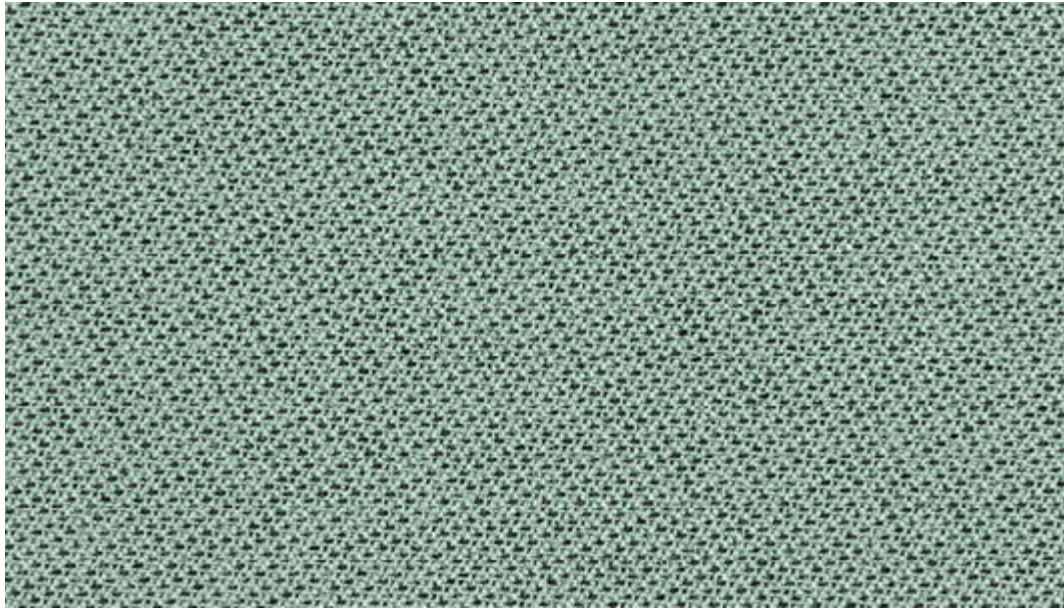


140 cm: 2490-66181



140 cm: 2490-66182

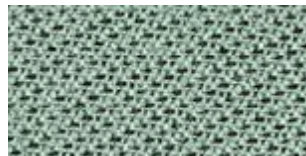
All colours are available in width 140 cm/55". 10 colours are also available in width 170 cm/67".
Contact customer service for other colours.



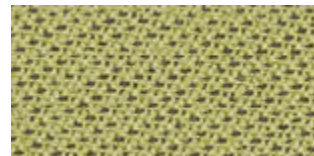
140 cm: 2490-67089



140 cm: 2490-66184
170 cm: 2495-66184



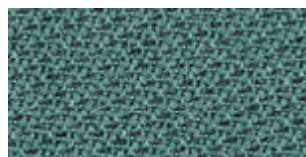
140 cm: 2490-67089
170 cm: 2495-67089



140 cm: 2490-62092
170 cm: 2495-62092



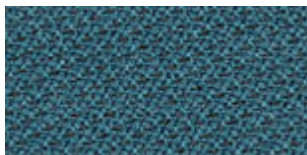
140 cm: 2490-66185



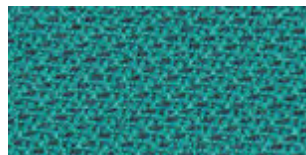
140 cm: 2490-67090



140 cm: 2490-68207



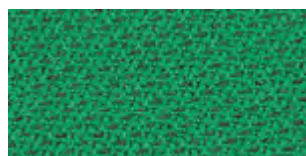
140 cm: 2490-66186



140 cm: 2490-67088



140 cm: 2490-68204



140 cm: 2490-68205



140 cm: 2490-68206

All colours are available in width 140 cm/55". 10 colours are also available in width 170 cm/67".
Contact customer service for other colours.

TONAL™

Tonal specifications: www.gabriel.dk

Please be aware that the PDF colour shades can appear different from the real fabric colours.
We advise you to request actual fabric samples before ordering.

Valencia™

CONTRACT | MARINE INTERIORS | AUTOMOTIVE

SPRADLING®
COATED FABRICS

Standard Collection

profim

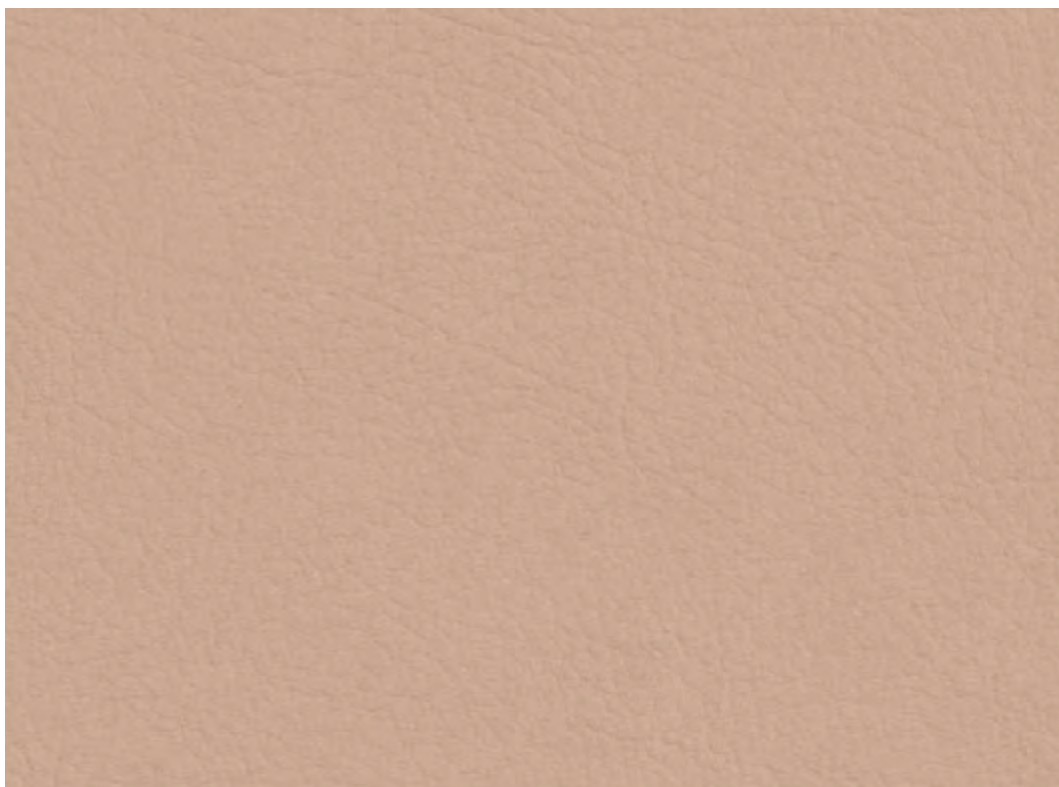
Valencia™

grupa
cenowa ①

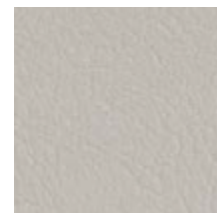
107-0002	107-2116
107-0034	107-4042
107-2107	107-4045
107-2116	107-9035

Extended Collection

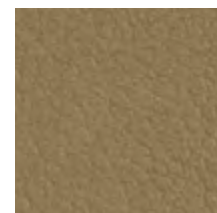
Wszystkie kolory poza standardowymi dostępne są z terminem realizacji 6-8 tygodni. Szczegóły wyceny dostępne są u właściwego RDS (Regionalnego Dyrektora Sprzedaży).



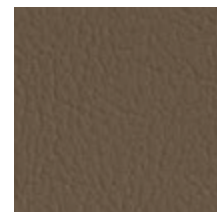
107-2113
LOTUS



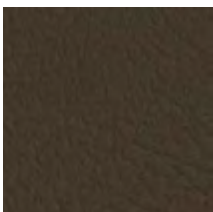
107-8020
PEARLESSENCE (MET.)



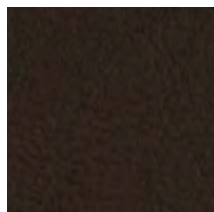
107-6020
GOLD (MET.)



107-0034
TAUPE



107-5002
MOSS



107-4041
METEOR



107-0020
MOCCA



107-0001
PRALINÉ



107-0033
BUCHE



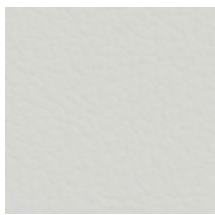
 Also available in BS 5852 Part 2 CRIB 5 quality

 Also available in DIN 4102 BI & NF P 92-503 MI quality

 No Master samples (not suitable for colour matching and quality control / testing purposes). Commercially acceptable colour shifts may occur between production runs. As such lot separation is recommended.

 For Care and Cleaning instructions please visit our website WWW.SPARDLING.EU

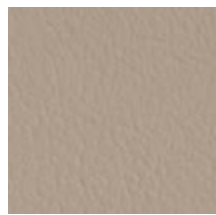
[CLICK HERE TO S](#)



107-9607 **B1** **C5** **+**
PURE WHITE



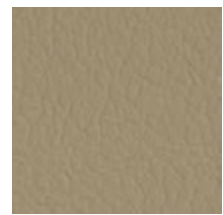
107-8032 **C5**
WEISS



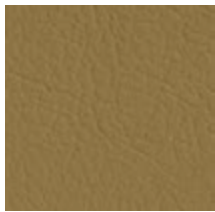
107-1048 **B1** **C5**
SISAL



107-1020 **C5**
IVORY (MET.)



107-1049 **B1** **C5**
LEINEN



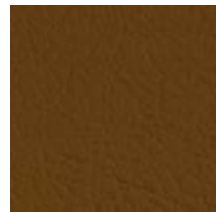
107-1001
CHAMPAGNE



107-1050 **C5**
BEIGE



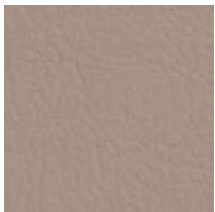
107-2117 **B1** **C5**
CASHMERE



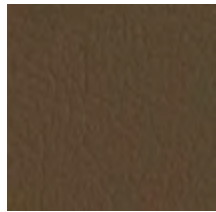
107-0002
COGNAC



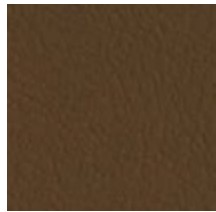
107-0035 **C5**
TERRACOTTA



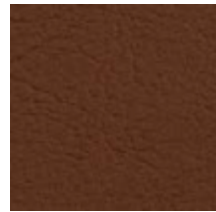
107-4044 **C5**
WARM GREY



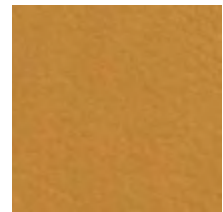
107-4001
MUSHROOM



107-9001
SUMATRA



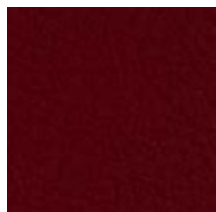
107-2115 **B1** **C5**
CHESTNUT



107-2116 **B1** **C5**
CAMEL



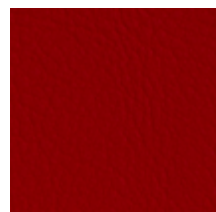
107-2001
MERLOT



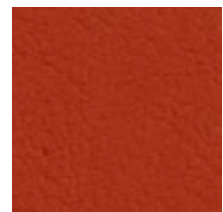
107-2062 **B1** **C5**
PORT



107-2074 **B1** **C5**
KIRSCH



107-2075 **B1** **C5**
ROT



107-2112 **C5**
TOMATO

SEE THE PRODUCT TECHNICAL SPECIFICATIONS



CONTRACT

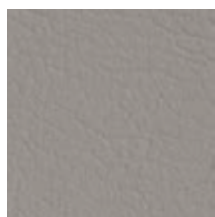


MARINE INTERIORS

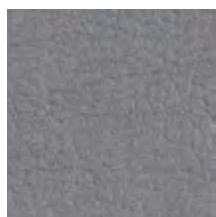


AUTOMOTIVE

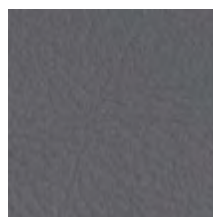
Colour Marked with **+** has **PERMABLOK³** **PLUS+**
ADVANCED VINYL PROTECTION



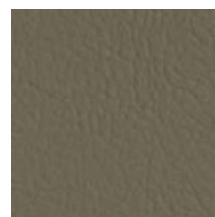
107-4040
AUSTER B1 CS



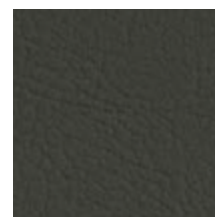
107-4020
SILVER (MET.) CS



107-4045
PERLE B1 CS



107-4002
LAUREL CS



107-4052
LICHTGRAU CS



107-5056
JADE CS



107-5057
TÜRKIS CS



107-3069
BALTIC CS



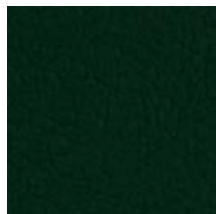
107-3001
LAVENDEL CS



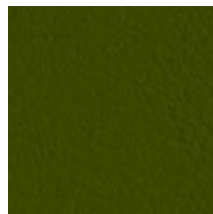
107-2118
ULTRA VIOLET CS



107-2119
TEAL B1 CS



107-5069
GRÜN CS



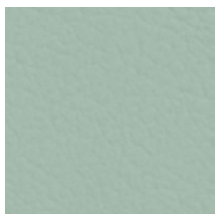
107-5001
OLIVE CS



107-5041
APFEL CS



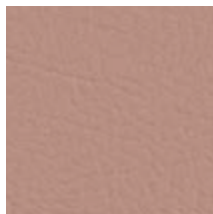
107-2110
AVOCADO B1 CS



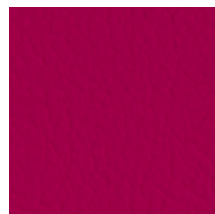
107-2106
CORAL CS



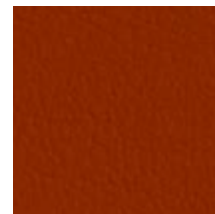
107-2107
SKYLIGHT B1 CS



107-2114
ROSÉ B1 CS



107-2021
PINK CS



107-6003
NECTARINE

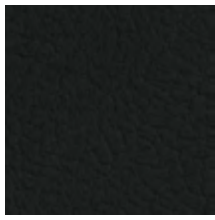
CS Also available in BS 5852 Part 2 CRIB 5 quality

B1 Also available in DIN 4102 BI & NF P 92-503 MI quality

 No Master samples (not suitable for colour matching and quality control / testing purposes). Commercially acceptable colour shifts may occur between production runs. As such lot separation is recommended.



 For Care and Cleaning instructions please visit our website WWW.SPRADLING.EU

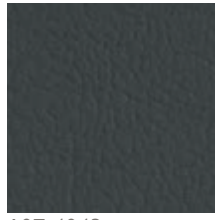
[CLICK HERE TO S](#)



107-4003
GRAPHITE  



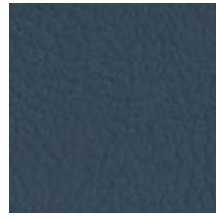
107-9035
SCHWARZ  



107-4043
PLATIN 



107-5065
PETROL 



107-4042
TITAN 



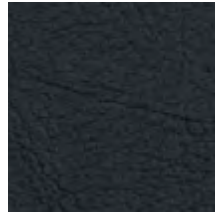
107-2002
BERRY  



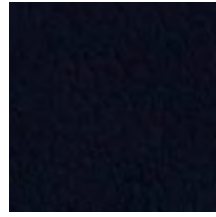
107-7001
AMETHYST 



107-3067
DELFT  



107-2108
NIGHT



107-3068
MARINE



107-2109
CITRUS  



107-2111
SQUASH  



107-2020
SONNE 



107-6012
SAFRAN 



107-6013
MELONE 



107-6019
ORANGE  

SEE THE PRODUCT TECHNICAL SPECIFICATIONS



CONTRACT



MARINE INTERIORS



AUTOMOTIVE

SPRADLING®
Inspiration that covers the world

For more info: marketing.europe@spradling.group
WWW.SPRADLING.EU

Xtreme

camira

Standard Collection

profim

Xtreme

grupa cenowa ①

YS009	YS094
YS026	YS096
YS047	YS136
YS079	YS145
YS081	

Extended Collection

Wszystkie kolory poza standardowymi dostępne są z terminem realizacji 6-8 tygodni. Szczegóły wyceny dostępne są u właściwego RDS (Regionalnego Dyrektora Sprzedaży).



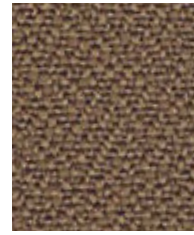
Adobo
YS165



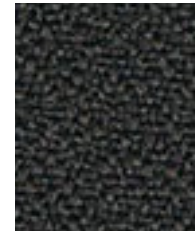
Aruba
YS108



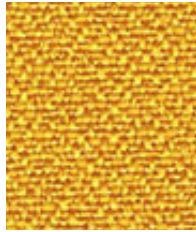
Sandstorm
YS071



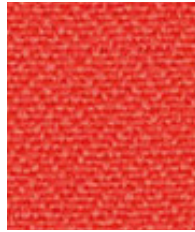
Nougat
YS091



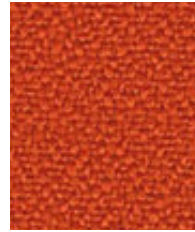
Sombbrero
YS046



Solano
YS072



Tortuga
YS168



Lobster
YS076



Belize
YS105



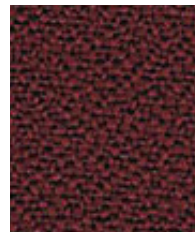
Panama
YS079



Diablo
YS101



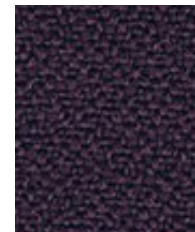
Tokara
YS136



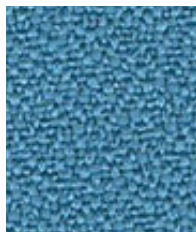
Tobago
YA030



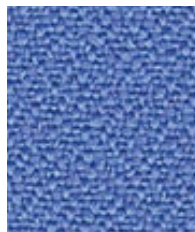
Bridgetown
YS102



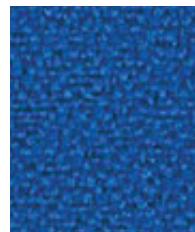
Tarot
YS084



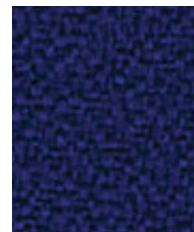
Parasol
YS073



Bluebell
YS097



Honeymoon
YS035



Ocean
YS100



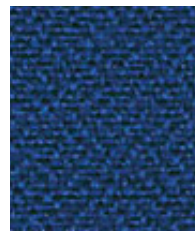
Cayman
YS024



Steel
YS095



Martinique
YS004



Scuba
YS082

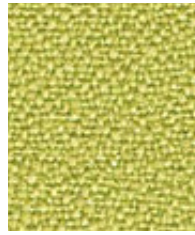


Curacao
YS005

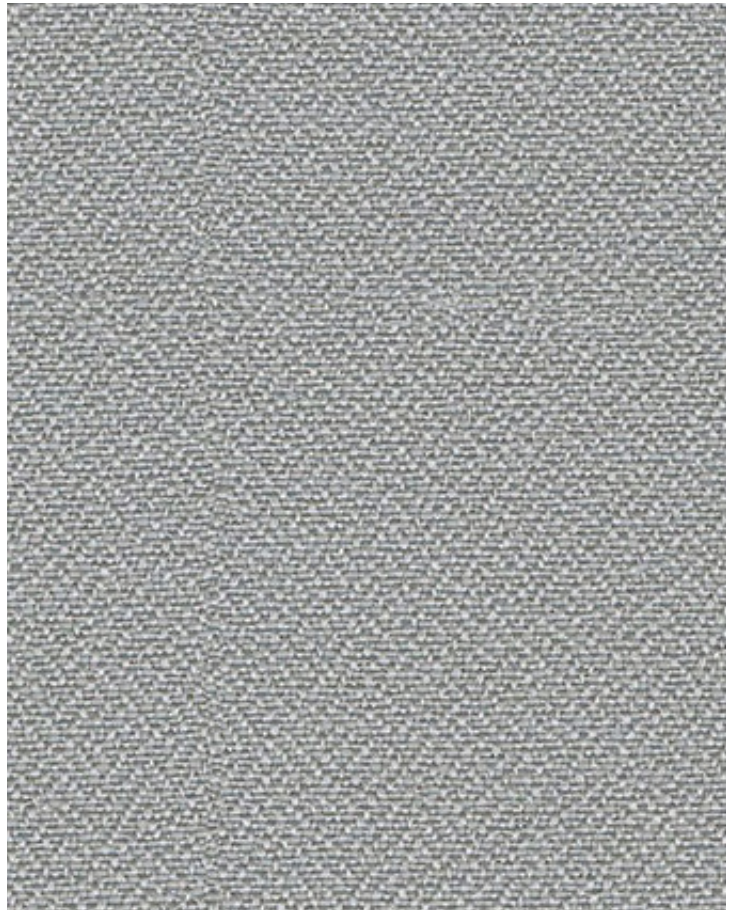


Costa
YS026

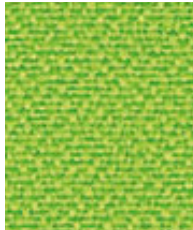
Photographic fabric scans are not colour accurate. Always request actual fabric samples before ordering.



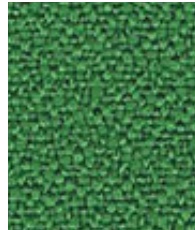
Apple
YS096



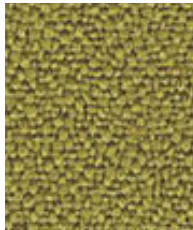
Slip
YS094



Madura
YS156



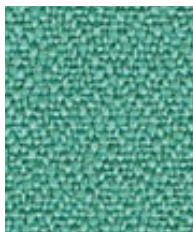
Lombok
YS159



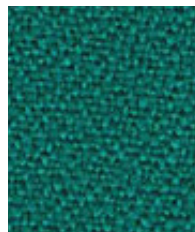
Appledore
YS077



Taboo
YS045



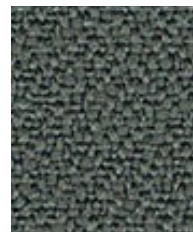
Campeche
YS074



Tonga
YS160



Windjammer
YS047



Krabi
YS141



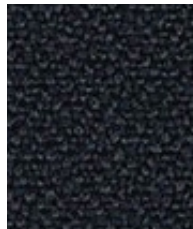
Blizzard
YS081



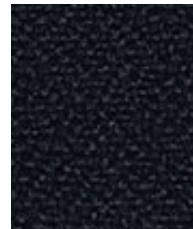
Rum
YS173



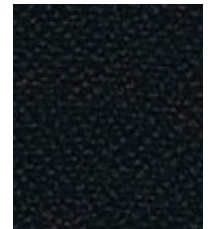
Osumi
YS171



Bonaire
YS172



Padang
YS145



Havana
YS009



Task seating



Cigarette & Match



Medium Hazard B1



Bleach cleanable



Washable



Environmental



Year guarantee

Xtreme is a modern crepe weave fabric made from 100% post-consumer recycled polyester, diverting waste from landfill and saving virgin raw materials. Its stretch properties, coupled with high flame retardancy, durability and non-pilling properties make Xtreme an ever popular fabric for task seating.



Technical information

UK

Industry Application
Contract

Composition
100% post-consumer recycled polyester

Environment
Certified to the EU Ecolabel
Certified to OEKO-TEX® Standard 100
Certified to Indoor Advantage™ Gold
Made from 100% recycled polyester
Non metallic dyestuffs

Width
140 cm minimum

Weight
310 g/m² ±5% (434 g/lin.m ±5%)

Abrasion Resistance*
Heavy duty / 10 year guarantee
Independently certified to ≥100,000
Martindale cycles

Flammability
EN 1021 - 1 (cigarette)
EN 1021 - 2 (match)
BS 7176 Low Hazard
BS 5852 Ignition Source 5
BS 7176 Medium Hazard
DIN 4102 B1
NF D 60-013
ONORM B 3825 & A 3800-1
(over 58 kg/m³ CMHR foam)
UNI 9175 Classe 1 IM
BS 476 Part 7 Class 1 (Adhered)
Note: Flammability performance is dependent on components used. Our certificates show what substrates have been used in our tests. For composite tests customers must ensure their complete furniture meets the necessary standards.

Light Fastness
6 (ISO 105 - B02)

Fastness to Rubbing
Wet: 4, Dry: 4 (ISO 105 - X12)

Bleach Cleanable
ISO 105 E03 colour change 4 for dilution factor 1:4 chlorine solution

Cleaning
Vacuum regularly. Wipe with a damp cloth using a proprietary upholstery shampoo/ soap. For deeper cleaning use steam, bleach, alcohol or professionally dry clean. Can be washed at 60°C. Full details can be found in our cleaning and disinfection guide.

*Abrasion testing produces a wide variability of results even from the same test sample. The independent certificate of ≥100,000 cycles is available on our website or from our customer service team. Internally we also specify this product at >100,000 cycles which we believe is realistic for repeatability of testing. Please be aware that abrasion testing alone is not a reliable indicator of the actual wear performance of fabrics. We're so confident in the durability of our products that we provide a robust 10 year guarantee (full details available).
Please note that seam performance is dependent on seam construction and needle and thread type. We recommend that appropriate sewing advice be taken.
Batch to batch variations in shade may occur within commercial tolerances. We reserve the right to alter technical specifications without notice. The Unregistered Design Rights and the Copyright in all designs are the exclusive property of Camira Fabrics Limited.

D

Einsatzbereich
Büro & Objekt

Zusammensetzung
100% post-consumer recycelten Polyester

Umweltfreundlich
Nach Zertifikat EU Ecolabel
Nach Zertifikat OEKO-TEX® Standard 100
Nach Zertifikat Indoor Advantage™ Gold
Hergestellt aus 100% recycelten Polyester
Nicht schwermetallhaltige Farbstoffe

Breite
140 cm nutzbare Breite

Gewicht
310 g/m² ±5% (434 g/ldf.m ±5%)

Scheuerfestigkeit*
Schwerer Objekteinsatz /
10 Jahre Garantie
Extern zertifiziert mit ≥100,000
Scheuertouren Martindale

Feuersicherung
EN 1021 - 1 (Zigarettestest)
EN 1021 - 2 (Streichholztest)
BS 7176 Low Hazard
BS 5852 Ignition Source 5
BS 7176 Medium Hazard
DIN 4102 B1
NF D 60-013
ONORM B 3825 & A 3800-1
(mit 58 kg/m³ CMHR Schaum)
UNI 9175 Classe 1 IM
BS 476 Part 7 Class 1 (Adhered)
Bemerkung: Die Schwerentflammbarkeit hängt von den verwendeten Komponenten ab. Unsere Zertifikate zeigen auf, welche Substrate bei den Tests verwendet wurden. Bei Verbundtests muss sichergestellt sein, daß das komplette Möbel den entsprechenden Standards entspricht.

Lichtechtheit
6 (ISO 105 - B02)

Reibechtheit
Nass: 4, Trocken: 4 (ISO 105 - X12)

Chlorbleiche-Beständig
ISO 105 E03 Farbänderung 4 bei einer 1:4 verdünnten Chlor-Lösung

Reinigung
Regelmässig absaugen. Mit einem feuchten Tuch abwischen oder mit einem geeigneten Polstershampoo behandeln. Für eine Grundreinigung bitte Dampf, Chlorbleiche, Alkohol oder professionelle Trockenreinigung verwenden. Kann bei 60°C gewaschen werden. Weitere Informationen finden Sie in unserem Leitfaden zur Reinigung und Desinfektion.

*Die Scheuerfestigkeitsprüfung ergibt selbst bei gleichen Testmustern stark abweichende Ergebnisse. Das Zertifikat eines unabhängigen Prüfinstitutes über ≥100,000 Scheuertouren erhalten Sie von unserem Vertriebsdienst oder auf unserer Webseite. Intern spezifizieren wir auch dieses Produkt mit >100,000 Scheuertouren, die in der Serienfertigung als realistisch angenommen werden. Bitte nehmen Sie zur Kenntnis, dass die Scheuerfestigkeitsprüfung allein keine Aussagekraft über die Langlebigkeit eines Bezugsstoffes hat. Wir sind von der Langlebigkeit unserer Produkte überzeugt und bieten daher 10 Jahre Garantie (Details auf Anfrage). Eine optimale Nahtausreissfestigkeit hängt von der Nahtfahne, der verwendeten Nadel und dem Näh-Garn ab. Wir empfehlen daher Nähversuche durchzuführen. Handelsübliche Farbabweichungen können auftreten und berechtigen nicht zur Reklamation. Wir behalten uns die Änderung technischer Spezifikationen vor. Die registrierten und nicht registrierten Urheberrechte der Dessinierungen sind ausschliessliches Eigentum der Camira Fabrics Limited.

F

Application industrielle
Contract

Composition
100% polyester recyclé post-consumation

Écologique
Avec le certificat EU Ecolabel
Certifié à OEKO-TEX® Standard 100
Certifié à Indoor Advantage™ Gold
Fabriqué d'un polyester 100% recyclé
Teintures non métalliques

Largeur
140 cm minimum

Poids
310 g/m² ±5% (434 g/m.l ±5%)

Résistance à l'abrasion*
Usage intense / garantie 10 ans.
Certificat indépendant ≥100,000 cycles
Martindale

Flammabilité
EN 1021 - 1 (cigarette)
EN 1021 - 2 (allumette)
BS 7176 Low Hazard
BS 5852 Ignition Source 5
BS 7176 Medium Hazard
DIN 4102 B1
NF D 60-013
ONORM B 3825 & A 3800-1
(sur 58 kg/m³ CMHR mousse)
UNI 9175 Classe 1 IM
BS 476 Part 7 Class 1 (Adhered)
Notes: La performance de flammabilité dépend des composantes utilisées. Nos certificats indiquent les substrats utilisés dans nos tests. Pour les tests composites, les clients doivent s'assurer que leurs meubles complets satisfont aux normes nécessaires.

Solidité à la lumière
6 (ISO 105 - B02)

Solidité au Frottement
Mouillé: 4, Sec: 4 (ISO 105 - X12)

Mouillable au javel
ISO 105 E03 changement de couleur 4 pour le facteur de dilution 1: 4 solution de chlore

Nettoyage
Passez l'aspirateur régulièrement. Essayez avec un chiffon humide en utilisant un shampooing/savon pour tissus d'ameublement exclusif. Pour un nettoyage en profondeur, utilisez la vapeur, javel, alcool ou un nettoyage à sec professionnel. Peut être lavé à la machine, programme maximum 60°C. Vous trouverez tous les détails dans notre guide de nettoyage et de désinfection.

*Les tests de résistance à l'abrasion proposent une large variété de résultat final, parfois sur le même échantillon de tissu. Le certificat indépendant de ≥100,000 cycles est disponible sur notre site internet; vous pouvez également contacter notre Service Clients. Nous validons également – en interne – à >100,000 cycles; ce qui est, d'après nous, plus réaliste dans le but d'obtenir une continuité égale des résultats de tests. Merci de noter que l'abrasion seule ne constitue pas un indicateur de confiance dans la performance du tissu à long terme. Nous avons une confiance absolue en nos produits et leur durabilité, c'est pour cela que nous vous offrons une garantie robuste de 10 ans.
Veuillez noter que la performance du joint dépend de sa construction ainsi que de l'aiguille et du type de fil utilisés.
Une variation de couleurs peut provenir (commercialement tolérable). Nous réservons le droit de changer les spécifications techniques sans préavis. Les Droits de Conception non-enregistrés et les droits d'auteur de tous les motifs sont la propriétés exclusives de Camira Fabrics Limited.

ES

Aplicación Industrial
Contract

Composición
Polyester reciclado 100% post consumido

Ambiental
Certificado con EU Ecolabel
Certificado de OEKO-TEX® Standard 100
Certificado de Indoor Advantage™ Gold
Hecho de 100% de poliéster reciclado
Tintes no metálicos

Ancho
140 cm mínimo

Peso
310 g/m² ±5% (434 g/lin.m ±5%)

Resistencia a la abrasión*
Garantía de 10 años con uso intenso
independientemente del certificado de
≥100,000 Ciclos Martindale

Inflamabilidad
EN 1021 - 1 (cigarillo)
EN 1021 - 2 (cerilla)
BS 7176 Low Hazard
BS 5852 Ignition Source 5
BS 7176 Medium Hazard
DIN 4102 B1
NF D 60-013
ONORM B 3825 & A 3800-1
(con CMHR 58 kg/m³ de espuma)
UNI 9175 Classe 1 IM
BS 476 Part 7 Class 1 (Adhered)
Nota: El rendimiento de la inflamabilidad depende de los componentes usados. Nuestros certificados muestran qué substratos se han usado en nuestros tests. Para tests compuestos nuestros clientes deben asegurar si sus muebles cumplen la normativa al uso.

Solidez a la luz
6 (ISO 105 - B02)

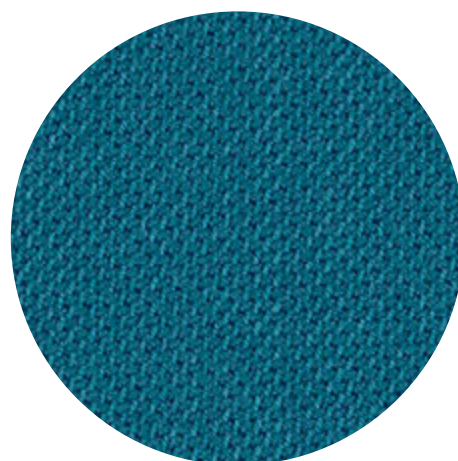
Solidez al rozamiento
Húmedo: 4, Seco: 4 (ISO 105 - X12)

Posibilidad lavado con Lejía
ISO 105 E03 cambio color 4 para un factor de disolución 1:4 solución cloro

Limpieza
Uso aspirador regularmente. Limpiar con un trapo usando jabón y agua o producto limpieza para tapicerías. Para una limpieza más profunda usen vapor, lejía, alcohol o limpieza en seco. Se puede lavar a 60°C. Los detalles completos se encuentran en nuestra guía de limpieza y desinfección.

*Los Test de Abrasión producen unos resultados muy variables incluso con la misma muestra. El certificado de ≥100,000 ciclos Martindale está disponible en nuestra web o se puede pedir al Departamento Comercial. Internamente también certificamos este producto >100,000 ciclos, que pensamos que es lo más realista posible en este caso, con una repetición de resultados tan dispares. Tengan en cuenta que el Test de Abrasión solo no es un indicador fiable sobre el desgaste de un tejido. De hecho, estamos tan convencidos en la durabilidad de nuestros tejidos, que ofrecemos una garantía de 10 años (detalles completos disponibles).
Tenga en cuenta que el rendimiento de la costura depende de la construcción de la costura, además de la aguja y del tipo de rosca. Le recomendamos que se aconsejen para coser la costura.
Las variaciones de lote a lote en la sombra se puede producir dentro de tolerancias comerciales. Nos reservamos el derecho a efectuar modificaciones técnicas sin previo aviso. Los derechos sobre los diseños no registrados y los derechos de autor en todos los diseños son propiedad exclusiva de Camira Fabrics Limited.

Select



SELECT™

by Gabriel

Standard Collection

profim

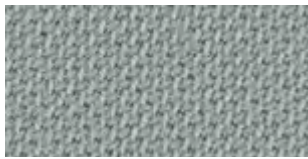
Select

grupa
cenowa ②

60003	62097
60051	65117
60132	66071
60134	66194
60139	67097
60999	67098
61184	68209
61186	68210

Extended Collection

Wszystkie kolory poza standardowymi dostępne są z terminem realizacji 6-8 tygodni. Szczegóły wyceny dostępne są u właściwego RDS (Regionalnego Dyrektora Sprzedaży).



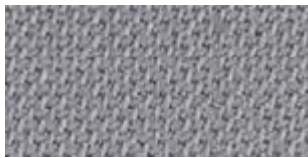
60131



60005



62097



60139



61188



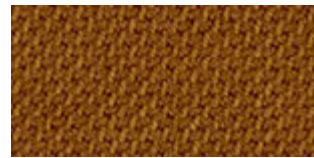
62098



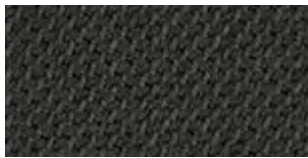
60003



60129



62100



60134



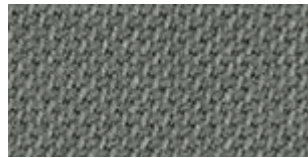
60130



61184



60051



60132



61189



60999



60133



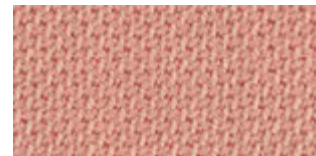
61187



62103



64214



64213



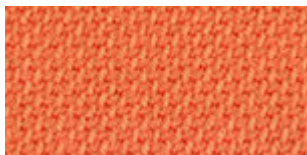
62099



64215



65117



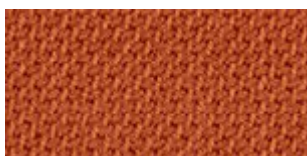
63101



64216



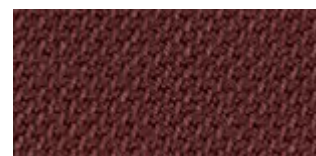
61185



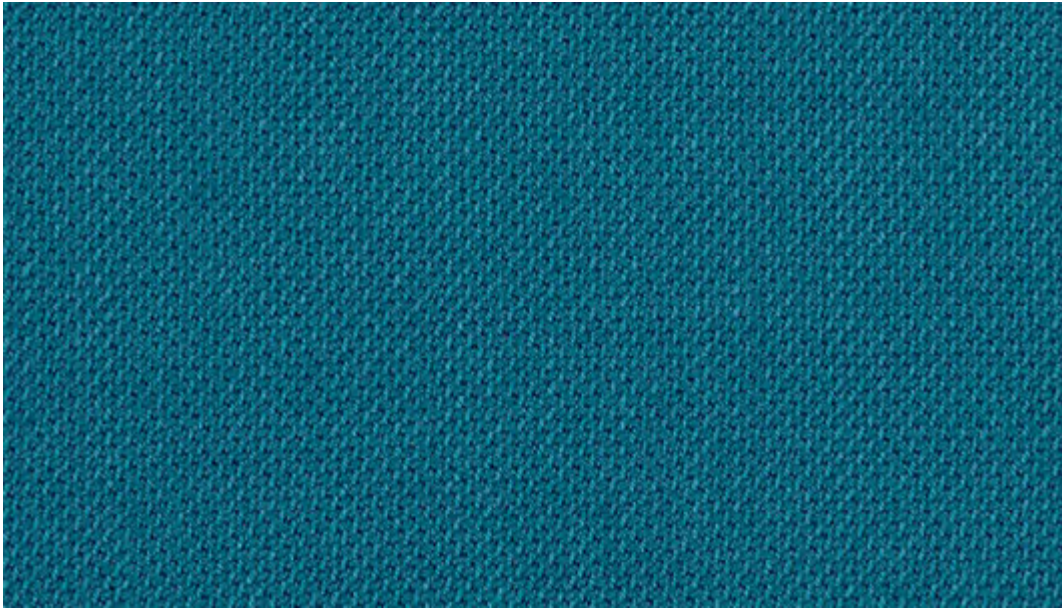
63102



64089



61186



66192



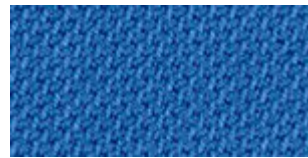
65114



67098



61190



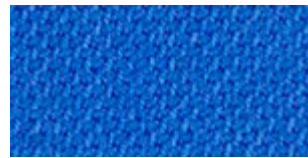
66190



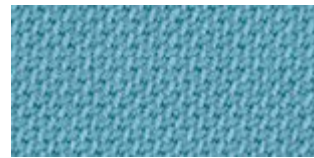
67097



65116



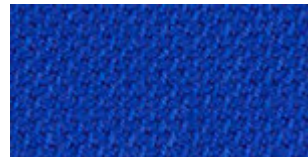
66189



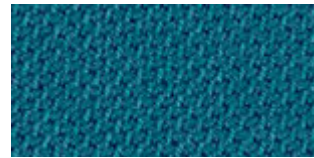
66191



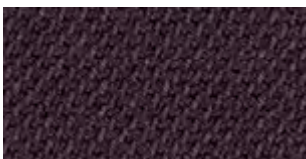
65077



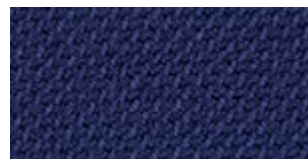
66075



66192



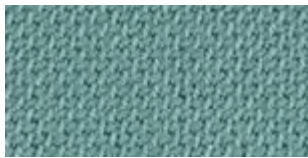
65115



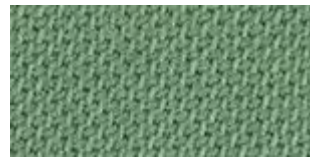
66005



66071



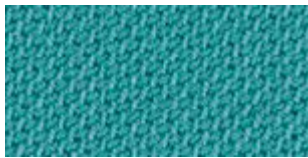
67101



68210



62104



67100



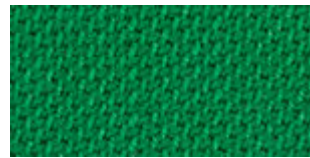
67094



67093



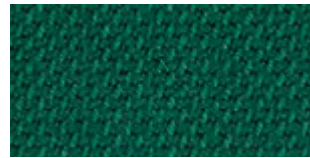
66193



68211



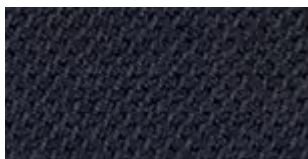
66194



67096



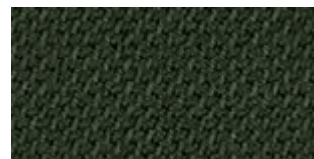
67095



66144

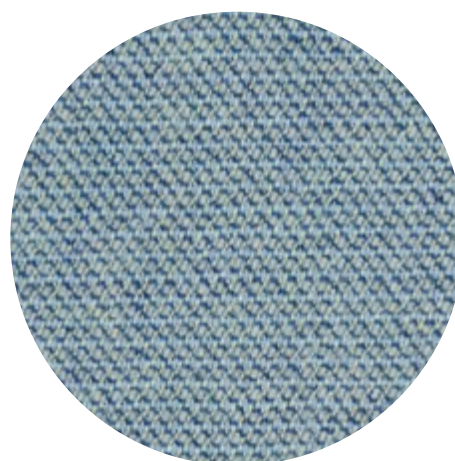


67099



68209

Capture Oceanic Step Synergy



CAPTURE

by Gabriel

Standard Collection

profim

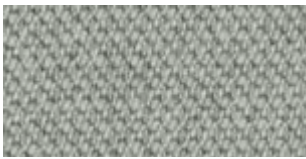
Capture

grupa
cenowa ③

CPT4102	CPT5103
CPT4301	CPT5501
CPT4401	CPT6001
CPT4601	CPT6401
CPT5101	CPT6601

Extended Collection

Wszystkie kolory poza standardowymi dostępne są z terminem realizacji 6-8 tygodni. Szczegóły wyceny dostępne są u właściwego RDS (Regionalnego Dyrektora Sprzedaży).



3305



3301



6101



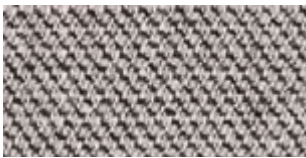
3306



5103



3201



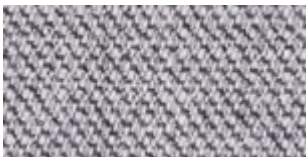
4001



4101



3401



4102



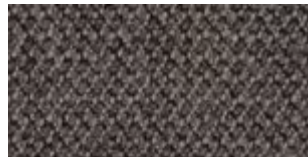
4401



6201



4601



4201



3101



5501



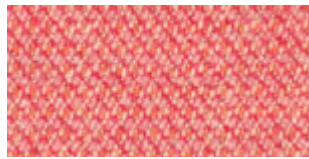
6301



3501



4803



4802



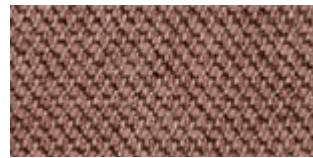
3601



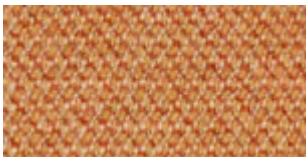
3202



4301



7201



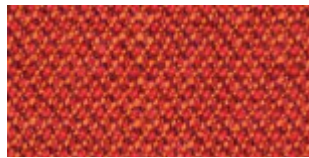
3001



7401



3002



4702



4801



6801



5401



7301



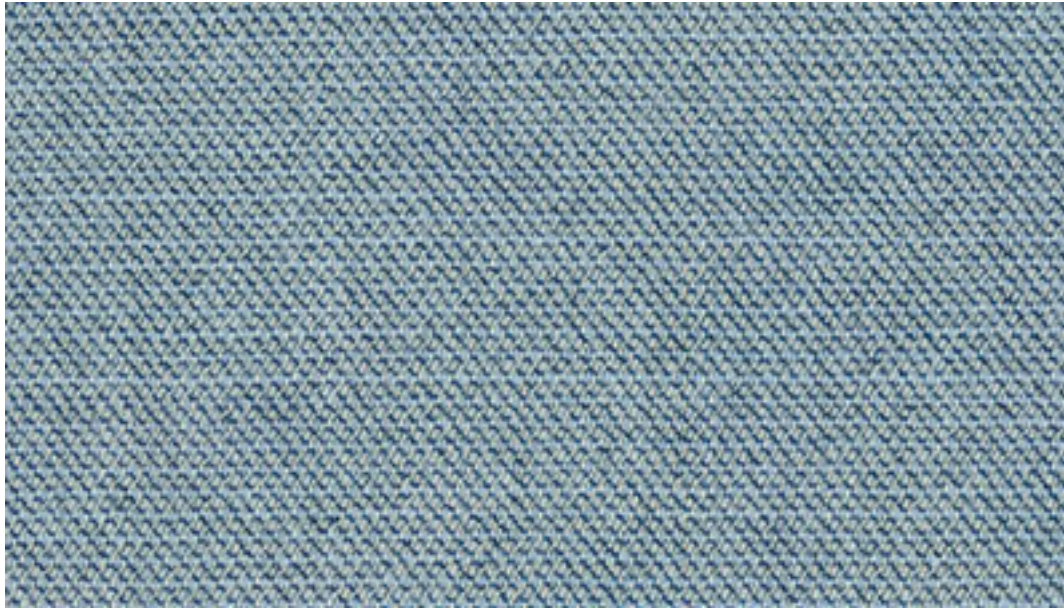
6401



5402



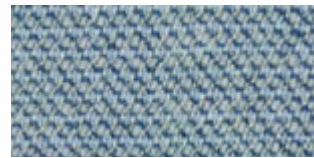
3701



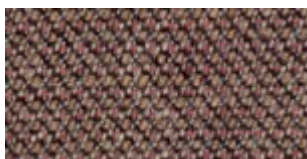
3302



4902



3302



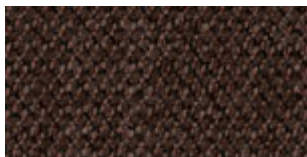
3402



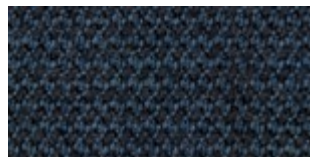
4901



5002



6901



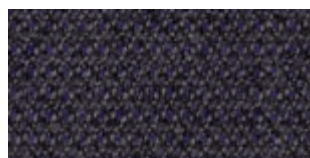
6001



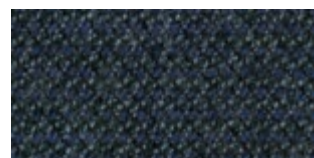
6602



4501



5201



3801



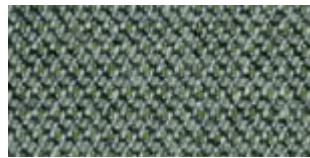
3304



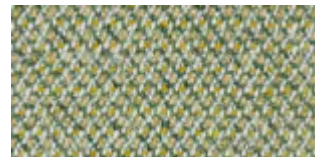
5102



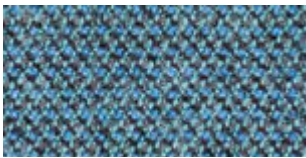
3303



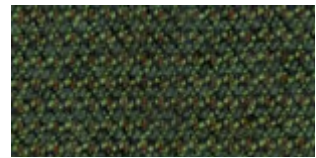
2901



5101



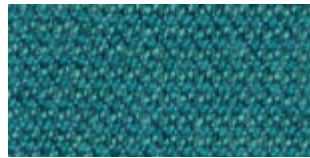
5001



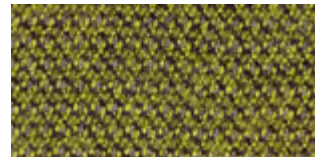
2701



6601



3901



5301



7101



2801



6501

CAPTURE

Specifications: www.gabriel.dk

Please be aware that the PDF colour shades can appear different from the real fabric colours.
We advise you to request actual fabric samples before ordering.

Oceanic

camira

Standard Collection

profim

Oceanic

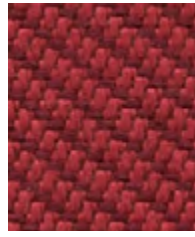
grupa cenowa ③

OOC01	OOC12
OOC04	OOC13
OOC06	OOC14
OOC08	OOC16
OOC11	

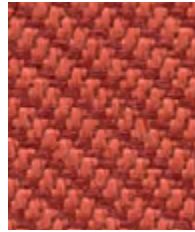
Extended Collection

Wszystkie kolory poza standardowymi dostępne są z terminem realizacji 6-8 tygodni. Szczegóły wyceny dostępne są u właściwego RDS (Regionalnego Dyrektora Sprzedaży).

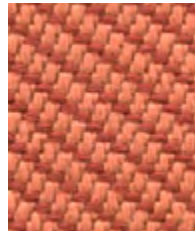
Photographic fabric scans are not colour accurate. Always request actual fabric samples before ordering.



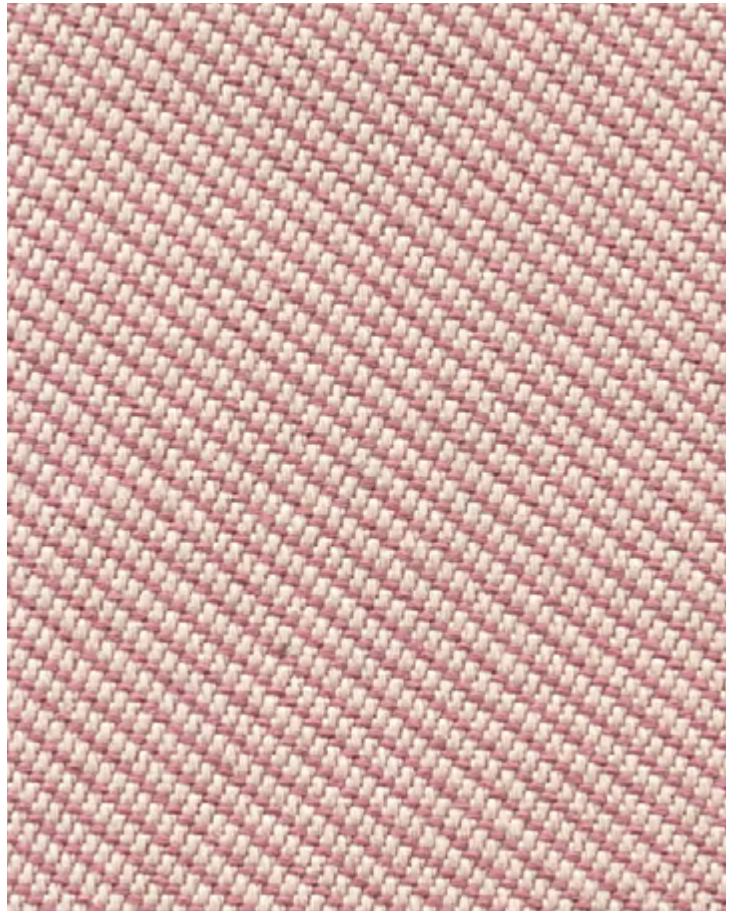
Abyss
OOC10



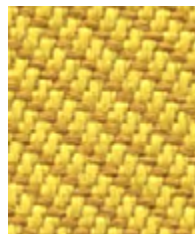
Aquatic
OOC12



Coral
OOC05



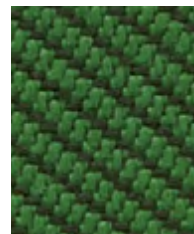
Seafarer
OOC16



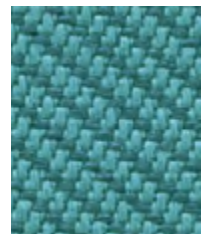
Barrier
OOC07



Sea
OOC04



Coast
OOC03



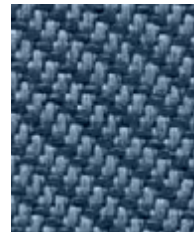
Jetsam
OOC02



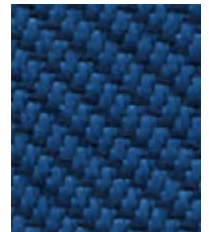
Paddle
OOC13



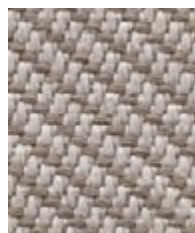
Gulf
OOC15



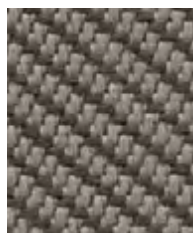
Neptune
OOC11



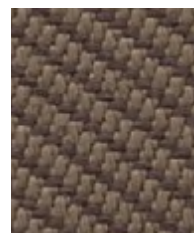
Atoll
OOC06



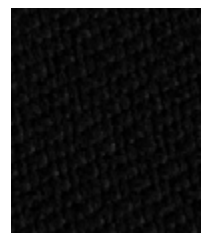
Riptide
OOC14



Bay
OOC08



Shore
OOC09



Flotsam
OOC01



Task seating



Soft seating



Cigarette & Match



Environmental



Washable



Bleach cleanable



Year guarantee

With Treatment



Medium Hazard

Oceanic is a fabric born of the SEAQUAL INITIATIVE to combat marine plastic pollution and achieve a waste free environment. It is created entirely from post-consumer recycled plastic - from debris floating discarded in our seas, used to make SEAQUAL YARN®, to bottles thrown away and destined for landfill. One small drop in the mission to clean both the earth and its ocean, this contemporary fabric is a polyester with a purpose.

We actively encourage our furniture customers to sign up to the SEAQUAL INITIATIVE when selling furniture upholstered in Oceanic.

Find out more at <https://licensees.seaqual.org>



SEAQUAL



Technical information

UK

Industry Application
Contract

Composition
100% post-consumer recycled polyester, including 50% SEAQUAL yarn.

Environment
Certified to the EU Ecolabel
Certified to OEKO-TEX® Standard 100
Certified to Indoor Advantage™ Gold
Made from 100% post-consumer recycled polyester
Non metallic dyestuffs

Width
140 cm minimum

Weight
497g/m² ±5% (696g/lin.m ±5%)

Abrasion Resistance*
Heavy duty / 10 year guarantee
Independently certified to ≥100,000 Martindale cycles

Flammability
EN 1021 - 1 (cigarette)
EN 1021 - 2 (match)
BS 7176 Low Hazard
Optional: Please specify when ordering:
BS 5852 Ignition Source 5 with EnviroFlam5
BS 7176 Medium Hazard with EnviroFlam5
Note: Flammability performance is dependent on components used. Our certificates show what substrates have been used in our tests. For composite tests customers must ensure their complete furniture meets the necessary standards.

Light Fastness
5 (ISO 105 - B02)
OOC16: 4/5 (ISO 105 - B02)

Fastness to Rubbing
Wet: 4, Dry: 4 (ISO 105 - X12)

Bleach Cleanable
ISO 105 E03 colour change 4 for dilution factor 1:4 chlorine solution

Cleaning
Vacuum regularly. Wipe with a damp cloth using a proprietary upholstery shampoo/ soap. For deeper cleaning use steam, bleach, alcohol or professionally dry clean. Can be washed at 60°C. Full details can be found in our cleaning and disinfection guide.

*Abrasion testing produces a wide variability of results even from the same test sample. The independent certificate of ≥100,000 cycles is available on our website or from our customer service team. Internally we specify this product at >80,000 cycles which we believe is realistic for repeatability of testing. Please be aware that abrasion testing alone is not a reliable indicator of the actual wear performance of fabrics. We're so confident in the durability of our products that we provide a robust 10 year guarantee (full details available). Please note that seam performance is dependent on seam construction and needle and thread type. We recommend that appropriate sewing advice be taken. Batch to batch variations in shade may occur within commercial tolerances. We reserve the right to alter technical specifications without notice. The Unregistered Design Rights and the Copyright in all designs are the exclusive property of Camira Fabrics Limited.

D

Einsatzbereich
Büro & Objekt

Zusammensetzung
100% recyceltes post-consumer Polyester, enthält 50% SEAQUAL Garn.

Umweltfreundlich
Nach Zertifikat EU Ecolabel
Nach Zertifikat OEKO-TEX® Standard 100
Nach Zertifikat Indoor Advantage™ Gold
Hergestellt aus 100% post-consumer recycelten Polyester
Nicht schwermetallhaltige Farbstoffe

Breite
140 cm nutzbare Breite

Gewicht
497g/m² ±5% (696g/lfid.m ±5%)

Scheuerfestigkeit*
Schwerer Objekteinsatz / 10 Jahre Garantie
Extern zertifiziert mit ≥100,000 Scheuertouren Martindale

Feuersicherung
EN 1021 - 1 (Zigarettestest)
EN 1021 - 2 (Streichholztest)
BS 7176 Low Hazard
Bitte bei Auftragserteilung angeben:
BS 5852 Ignition Source 5 mit EnviroFlam5
BS 7176 Medium Hazard mit EnviroFlam5
Bemerkung: Die Schwerentflammbarkeit hängt von den verwendeten Komponenten ab. Unsere Zertifikate zeigen auf, welche Substrate bei den Tests verwendet wurden. Bei Verbundtests muss sichergestellt sein, daß das komplette Möbel den entsprechenden Standards entspricht.

Lichtechtheit
5 (ISO 105 - B02)
OOC16: 4/5 (ISO 105 - B02)

Reibechtheit
Nass: 4, Trocken: 4 (ISO 105 - X12)

Chlorbleiche-Beständig
ISO 105 E03 Färbänderung 4 bei einer 1:4 verdünnten Chlor-Lösung

Reinigung
Regelmässig absaugen. Mit einem feuchten Tuch abwischen oder mit einem geeigneten Polstershampoo behandeln. Für eine Grundreinigung bitte Dampf, Chlorbleiche, Alkohol oder professionelle Trockenreinigung verwenden. Kann bei 60°C gewaschen werden. Weitere Informationen finden Sie in unserem Leitfaden zur Reinigung und Desinfektion.

*Die Scheuerfestigkeitsprüfung ergibt selbst bei gleichen Testmustern stark abweichende Ergebnisse. Das Zertifikat eines unabhängigen Prüfinstitutes über ≥100,000 Scheuertouren erhalten Sie von unserem Vertriebsinnendienst oder auf unserer Webseite. Intern spezifizieren wir dieses Produkt mit >80,000 Scheuertouren, die in der Serienfertigung als realistisch angenommen werden. Bitte nehmen Sie zur Kenntnis, dass die Scheuerfestigkeitsprüfung allein keine Aussagekraft über die Langlebigkeit eines Bezugsstoffes hat. Wir sind von der Langlebigkeit unserer Produkte überzeugt und bieten daher 10 Jahre Garantie (Details auf Anfrage). Eine optimale Nahtausreissfestigkeit hängt von der Nahtfähe, der verwendeten Nadel und dem Näh-Garn ab. Wir empfehlen daher Näherweise durchzuführen. Handeltübliche Farbabweichungen können auftreten und berechtigen nicht zur Reklamation. Wir behalten uns die Änderung technischer Spezifikationen vor. Die registrierten und nicht registrierten Urheberrechte der Dessinierungen sind ausschliessliches Eigentum der Camira Fabrics Limited.

F

Application industrielle
Contract

Composition
100% polyester recyclé post consommation, comprenant 50% de fil SEAQUAL.

Écologique
Avec le certificat EU Ecolabel
Certifié à OEKO-TEX® Standard 100
Certifié à Indoor Advantage™ Gold
Fabriqué en polyester recyclé à 100% après consommation
Teintures non métalliques

Largeur
140 cm minimum

Poids
497g/m² ±5% (696g/m.l ±5%)

Résistance à l'abrasion*
Usage intense / garantie 10 ans. Certificat indépendant ≥100,000 cycles Martindale

Flammabilité
EN 1021 - 1 (cigarette)
EN 1021 - 2 (allumette)
BS 7176 Low Hazard
Prière de la mentionner lors de la commande:
BS 5852 Ignition Source 5 avec EnviroFlam5
BS 7176 Medium Hazard avec EnviroFlam5
Notez: La performance de flammabilité dépend des composantes utilisées. Nos certificats indiquent les substrats utilisés dans nos tests. Pour les tests composites, les clients doivent s'assurer que leurs meubles complets satisfont aux normes nécessaires.

Solidité à la lumière
5 (ISO 105 - B02)
OOC16: 4/5 (ISO 105 - B02)

Solidité au Frottement
Mouillé: 4, Sec: 4 (ISO 105 - X12)

Nettoyable au javel
ISO 105 E03 changement de couleur 4 pour le facteur de dilution 1: 4 solution de chlore

Nettoyage
Passez l'aspirateur régulièrement. Essayez avec un chiffon humide en utilisant un shampooing / savon pour tissus d'ameublement exclusif. Pour un nettoyage en profondeur, utilisez la vapeur, javel, alcool ou un nettoyage à sec professionnel. Peut être lavé à la machine, programme maximum 60°C. Vous trouverez tous les détails dans notre guide de nettoyage et de désinfection.

*Les tests de résistance à l'abrasion proposent une large variété de résultat final, parfois sur le même échantillon de tissu. Le certificat indépendant de ≥100,000 cycles est disponible sur notre site internet; vous pouvez également contacter notre Service Clients. Nous validons ce produit - en interne - à >80,000 cycles; ce qui est, d'après nous, plus réaliste dans le but d'obtenir une continuité égale des résultats de tests. Merci de noter que l'abrasion seule ne constitue pas un indicateur de confiance dans la performance du tissu à long terme. Nous avons une confiance absolue en nos produits et leur durabilité, c'est pour cela que nous vous offrons une garantie robuste de 10 ans. Veuillez noter que la performance du joint dépend de sa construction ainsi que de l'aiguille et du type de fil utilisés. une variation de couleurs peut provenir (commerciallement tolérable). Nous réservons le droit de changer les spécifications techniques sans préavis. Les Droits de Conception non-enregistrés et les droits d'auteur de tous les motifs sont la propriétés exclusives de Camira Fabrics Limited.

ES

Aplicación Industrial
Contract

Composición
100% polyester reciclado post consume, compuesto de un 50% de hilo SEAQUAL.

Ambiental
Certificado con EU Ecolabel
Certificado de OEKO-TEX® Standard 100
Certificado de Indoor Advantage™ Gold
Producido con poliéster 100% reciclado tras ser consumido
Tintes no metálicos

Ancho
140 cm mínimo

Peso
497g/m² ±5% (696g/lin.m ±5%)

Resistencia a la abrasion*
Garantía de 10 años con uso intenso independientemente del certificado de ≥100,000 Ciclos Martindale

Inflamabilidad
EN 1021 - 1 (cigarillo)
EN 1021 - 2 (cerilla)
BS 7176 Low Hazard
Por favor especificar cuando se requiere en el pedido:
BS 5852 Ignition Source 5 con EnviroFlam5
BS 7176 Medium Hazard con EnviroFlam5
Nota: El rendimiento de la inflamabilidad depende de los componentes usados. Nuestros certificados muestran qué substratos se han usado en nuestros tests. Para tests compuestos nuestros clientes deben asegurar si sus muebles cumplen la normativa al uso.

Solidez a la luz
5 (ISO 105 - B02)
OOC16: 4/5 (ISO 105 - B02)

Solidez al rozamiento
Húmedo: 4, Seco: 4 (ISO 105 - X12)

Posibilidad lavado con Lejía
ISO 105 E03 cambio color 4 para un factor de disolución 1:4 solución cloro

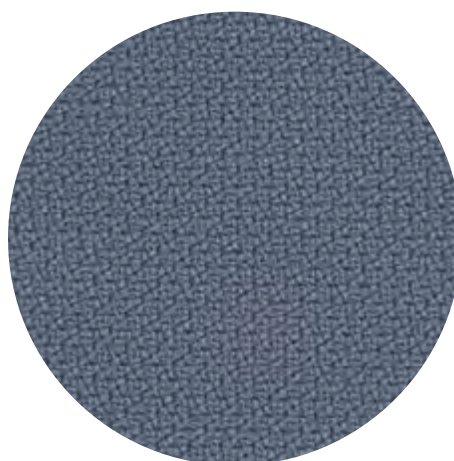
Limpieza
Usó aspirador regularmente. Limpiar con un trapo usando jabón y agua o producto limpieza para tapicerías. Para una limpieza más profunda usar vapor, lejía, alcohol o limpieza en seco. Se puede lavar a 60°C. Los detalles completos se encuentran en nuestra guía de limpieza y desinfección.

*Los Test de Abrasión producen unos resultados muy variables incluso con la misma muestra. El certificado de ≥100,000 ciclos Martindale está disponible en nuestra web o se puede pedir al Departamento Comercial. Internamente certificamos este producto >80,000 ciclos, que pensamos que es lo más realista posible en este caso, con una repetición de resultados tan dispares. Tengan en cuenta que el Test de Abrasión solo no es un indicador fiable sobre el desgaste de un tejido. De hecho, estamos tan convencidos en la durabilidad de nuestros tejidos, que ofrecemos una garantía de 10 años (detalles completos disponibles). Tenga en cuenta que el rendimiento de la costura depende de la construcción de la costura, además de la aguja y del tipo de rosca. Le recomendamos que se aconsejen para coser la costura. las variaciones de lote a lote en la sombra se puede producir dentro de tolerancias comerciales. Nos reservamos el derecho a efectuar modificaciones técnicas sin previo aviso. Los derechos sobre los diseños no registrados y los derechos de autor en todos los diseños son propiedad exclusiva de Camira Fabrics Limited.

SELECT™

Select specifications: www.gabriel.dk

Please be aware that the PDF colour shades can appear different from the real fabric colours.
We advise you to request actual fabric samples before ordering.



STEP™

by Gabriel

Standard Collection

profim

Step

grupa
cenowa ③

60090	63075
60091	66152
60999	67004
62057	68161

Extended Collection

Wszystkie kolory poza standardowymi dostępne są z terminem realizacji 6-8 tygodni. Szczegóły wyceny dostępne są u właściwego RDS (Regionalnego Dyrektora Sprzedaży).



60004



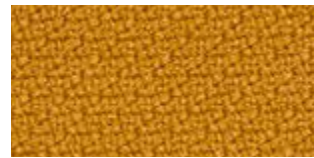
60091



61149



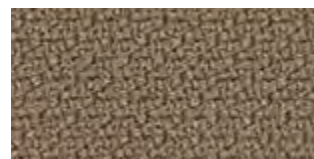
60011



62057



60092



61103



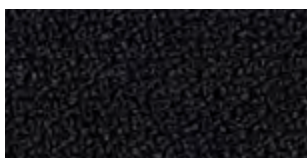
66019



60090



61150



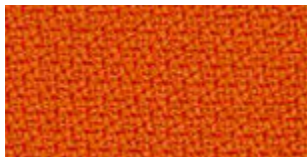
60999



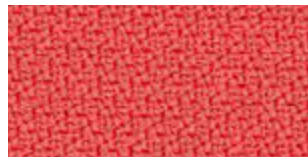
60089



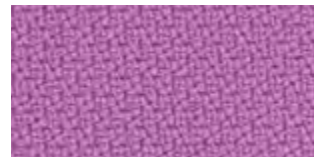
60021



63082



64178



65092



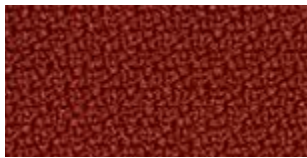
63012



64180



65023



63075



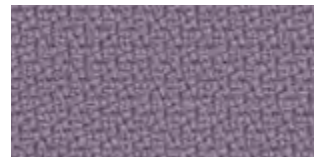
64179



65047



64177



65093



64159



64013



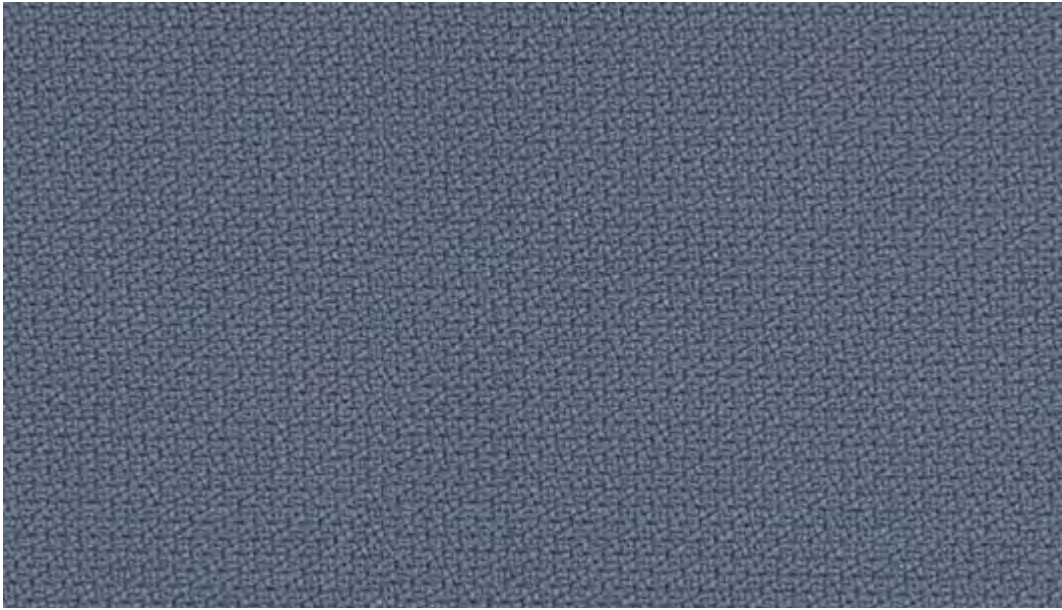
65094



61102



65095



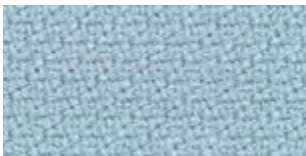
66152



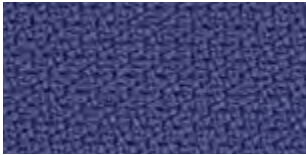
65090



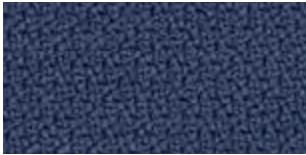
66152



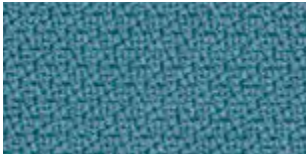
67004



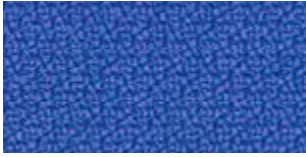
65091



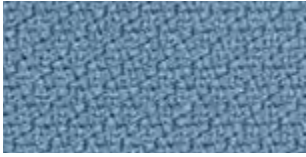
66148



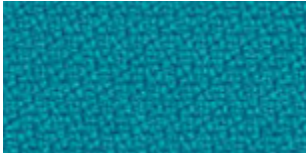
67072



66150



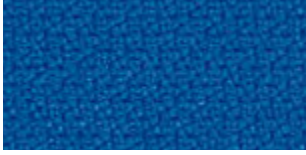
66018



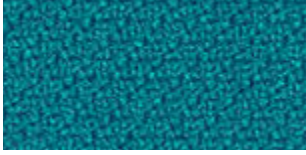
67073



66149



66151



67007



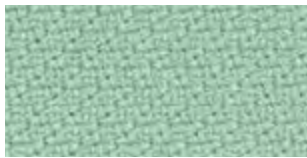
65018



65011



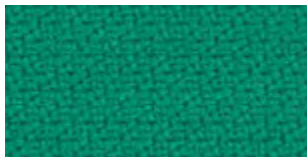
68158



68118



62073



68157



68163



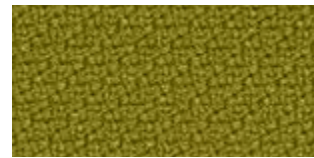
68164



68159



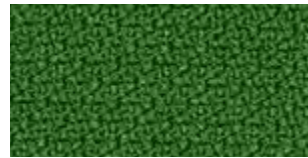
68162



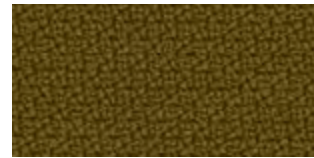
68119



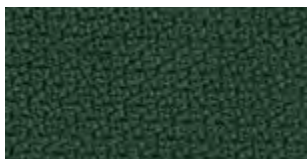
68160



68120



68165



68161



68121

STEP™

Step specifications: www.gabriel.dk

Please be aware that the PDF colour shades can appear different from the real fabric colours.
We advise you to request actual fabric samples before ordering.

Synergy

camira

Standard Collection

profim

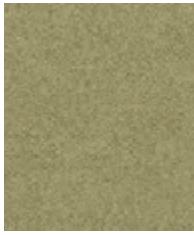
Synergy

grupa cenowa ③

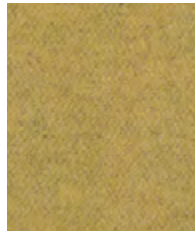
LDS08	LDS56
LDS16	LDS62
LDS17	LDS73
LDS49	LDS74

Extended Collection

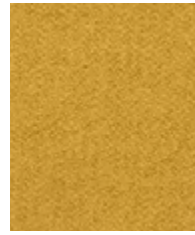
Wszystkie kolory poza standardowymi dostępne są z terminem realizacji 6-8 tygodni. Szczegóły wyceny dostępne są u właściwego RDS (Regionalnego Dyrektora Sprzedaży).



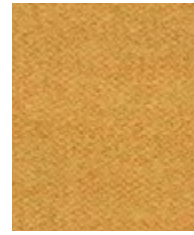
Bracket
LDS23



Summon
LDS45



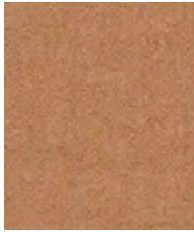
Lateral
LDS28



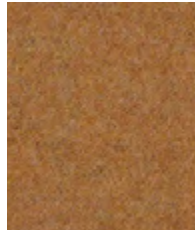
Relate
LDS44



Marry
LDS43



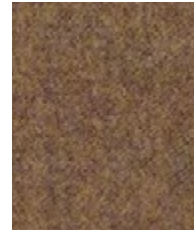
Loop
LDS18



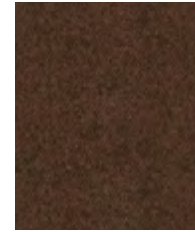
Frame
LDS22



Success
LDS76



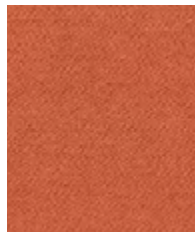
Linea
LDS37



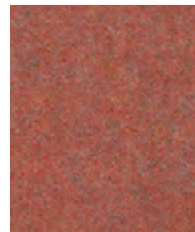
Collective
LDS39



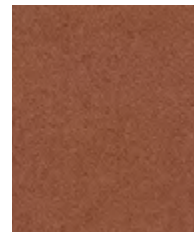
Affinity
LDS74



Contribution
LDS75



Work
LDS73



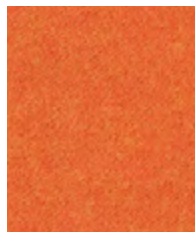
Combo
LDS77



Cordial
LDS78



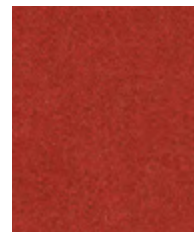
Congregate
LDS83



Likeness
LDS82



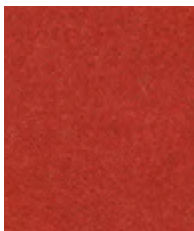
Similar
LDS81



Mutual
LDS84



Global
LDS86



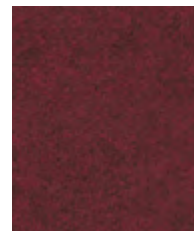
Open
LDS71



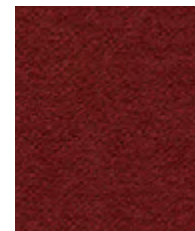
Apt
LDS80



Share
LDS85



Values
LDS87



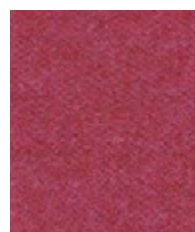
Amiable
LDS79



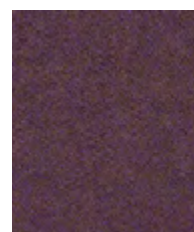
Fate
LDS07



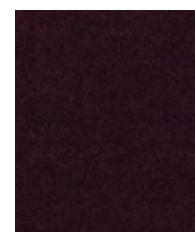
Compose
LDS72



Medley
LDS36



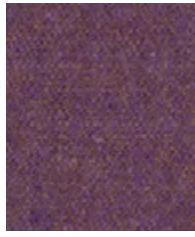
Together
LDS70



Process
LDS88



Venture
LDS05



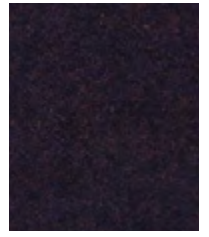
Fellowship
LDS66



Warmth
LDS67



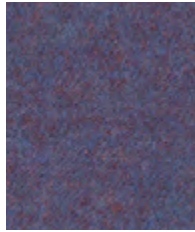
Collaborate
LDS68



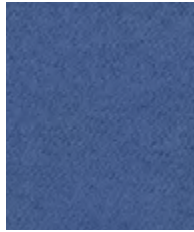
Assemble
LDS61



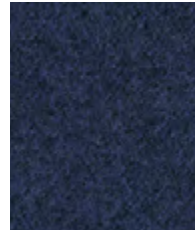
Huddle
LDS65



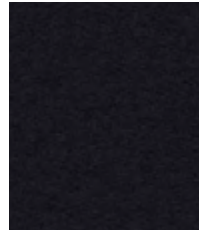
Order
LDS64



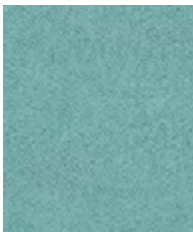
Guild
LDS63



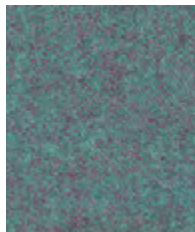
Alike
LDS62



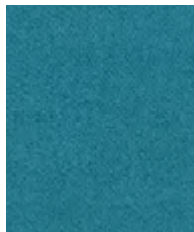
Sync
LDS69



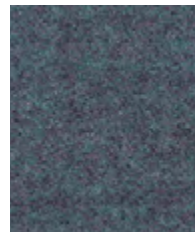
Support
LDS55



Kinship
LDS56



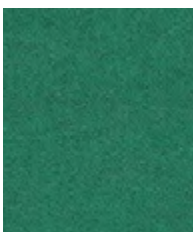
Engage
LDS57



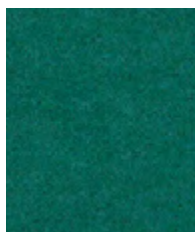
Family
LDS58



Unity
LDS38



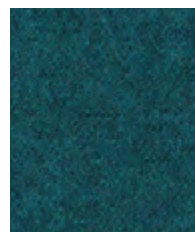
Comply
LDS52



Kindness
LDS51



League
LDS50



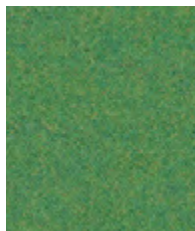
Group
LDS59



Accord
LDS60



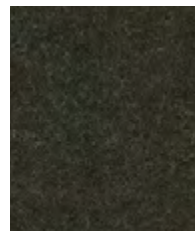
Regard
LDS54



Pact
LDS53



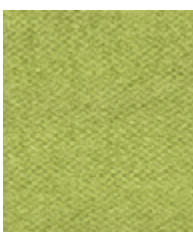
Integrate
LDS47



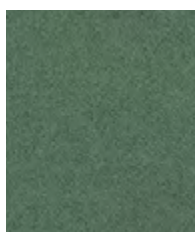
Couple
LDS41



Bridge
LDS26



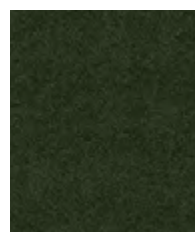
Gather
LDS46



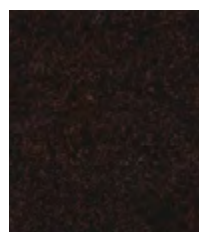
Append
LDS49



Interfuse
LDS48

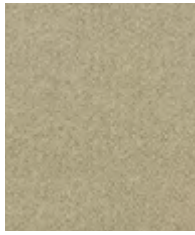


Intertwine
LDS42



Co-operate
LDS40

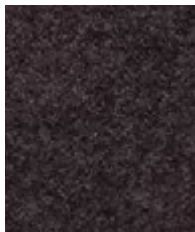
Photographic fabric scans are not colour accurate. Always request actual fabric samples before ordering.



Chain
LDS19



Tag
LDS33



Wed
LDS34



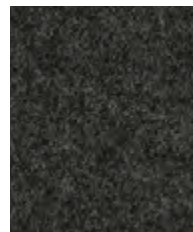
Affix
LDS32



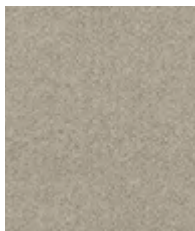
Serendipity
LDS08



Partner
LDS16



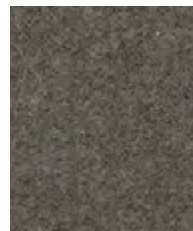
Mix
LDS17



Level
LDS20



Pair
LDS31



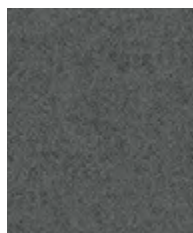
Chemistry
LDS35



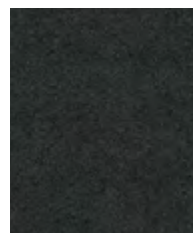
Hook
LDS29



Team
LDS21



Bond
LDS24



Compound
LDS25



Seek
LDS27



Task seating



Soft seating



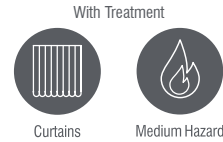
Cigarette & Match



Acoustic



Year guarantee



With Treatment



Curtains



Medium Hazard

Epitomising natural simplicity, Synergy is a wool rich fabric which is at once both irresistibly soft and ultra-high performing. Delicately felted, with a beautifully relaxed drape, the understated aesthetics showcase the intriguing colouration of this considered textile. Featuring exquisite fibre dyed shades and sumptuous piece dyed solids within its palette of 75 colourways, there truly is a tone for every scheme.



INDOOR ADVANTAGE GOLD FURNITURE



EU Ecolabel - AT/016/007

Technical information

UK

Composition

95% Virgin Wool, 5% Polyamide

Environment

Certified to the EU Ecolabel
Certified to Indoor Advantage™ Gold

Width

140 cm minimum

Weight

400 g/m² ±5% (560 g/lin.m ±5%)

Abrasion Resistance*

Heavy duty/10 year guarantee
Independently certified to ≥100,000 Martindale cycles

Flammability

EN 1021 - 1 (cigarette)
EN 1021 - 2 (match)
BS 7176 Low Hazard
NF D 60-013
ÖNORM B 3825 & A 3800-1 (over CMHR 58kg/m³ Foam)
UNI 9175 Classe 1 IM
EN 13501-1 Adhered Class D, s1, d0
IMO FTP Code (Part 8)
The Furniture and Furnishing (Fire Safety) Regulations 1988 (UK domestic cigarette and match)

Optional: Please specify when ordering:

BS 5852 Ignition Source 5 when FR treated
BS 7176 Medium Hazard when FR treated
EN 13501-1 Adhered Class B, s1, d0 when FR treated
EN 13501-1 Un-adhered Class D, s2, d0 when FR treated
BS 5867-2: Type B Curtains & Drapes when FR treated

Note: Flammability performance is dependent on components used. Our certificates show what substrates have been used in our tests. For composite tests customers must ensure their complete furniture meets the necessary standards.

Light Fastness

5 (ISO 105 - B02)

Fastness to Rubbing

Wet: 4, Dry: 4 (ISO 105 - X12)

Acoustic Properties

Acoustically transparent. Acoustic graphs available upon request.

Cleaning

Vacuum regularly. Wipe with a damp cloth using a proprietary upholstery shampoo/soap. For deeper cleaning use steam or professionally dry clean. Full details can be found in our cleaning and disinfection guide.

*Abrasion testing produces a wide variability of results even from the same test sample. The independent certificate of ≥100,000 cycles is available on our website or from our customer service team. Internally we also specify this product at >100,000 cycles which we believe is realistic for repeatability of testing. Please be aware that abrasion testing alone is not a reliable indicator of the actual wear performance of fabrics. We're so confident in the durability of our products that we provide a robust 10 year guarantee (full details available). Please note that seam performance is dependent on seam construction and needle and thread type. We recommend that appropriate sewing advice be taken. Batch to batch variations in shade may occur within commercial tolerances. We reserve the right to alter technical specifications without notice. The Unregistered Design Rights and the Copyright in all designs are the exclusive property of Camira Fabrics Limited.

D

Zusammensetzung

95% Schurwolle, 5% Polyamid

Umweltfreundlich

Nach Zertifikat EU Ecolabel
Nach Zertifikat Indoor Advantage™ Gold

Breite

140 cm nutzbare Breite

Gewicht

400 g/m² ±5% (560 g/lfd.m ±5%)

Scheuerfestigkeit*

Schwerer Objektsatz/10 Jahre Garantie. Extern zertifiziert mit ≥100,000 Scheuertouren Martindale

Feuersicherung

EN 1021 - 1 (Zigarettestest)
EN 1021 - 2 (Streichholztest)
BS 7176 Low Hazard
NF D 60-013
ÖNORM B 3825 & A 3800-1 (mit CMHR 58kg/m³ Schaum)
UNI 9175 Classe 1 IM
EN 13501-1 Adhered Class D, s1, d0
IMO FTP Code (Part 8)
The Furniture and Furnishing (Fire Safety) Regulations 1988 (UK Wohnmöbel Zigarettestest und Streichholztest)

Bitte bei Auftragserteilung angeben:

BS 5852 Ignition Source 5 wenn mit FR ausgerüstet
BS 7176 Medium Hazard wenn mit FR ausgerüstet
EN 13501-1 Adhered Class B, s1, d0 wenn mit FR ausgerüstet
EN 13501-1 Un-adhered Class D, s2, d0 wenn mit FR ausgerüstet
BS 5867-2: Type B Curtains & Drapes wenn mit FR ausgerüstet

Bemerkung: Die Schwerentflammbarkeit hängt von den verwendeten Komponenten ab. Unsere Zertifikate zeigen auf, welche Substrate bei den Tests verwendet wurden. Bei Verbundtests muss sichergestellt sein, daß das komplette Möbel den entsprechenden Standards entspricht.

Lichtechtheit

5 (ISO 105 - B02)

Reibechtheit

Nass: 4, Trocken: 4 (ISO 105 - X12)

Akustische Eigenschaften

Akustisch durchlässig. Akustische Messwerte auf Anfrage.

Reinigung

Regelmässig absaugen. Mit einem feuchten Tuch abwischen oder mit einem geeigneten Polstershampoo behandeln. Für eine Grundreinigung bitte Dampf oder professionelle Trockenreinigung verwenden. Weitere Informationen finden Sie in unserem Leitfaden zur Reinigung und Pflege.

*Die Scheuerfestigkeitsprüfung ergibt selbst bei gleichen Testmustern stark abweichende Ergebnisse. Das Zertifikat eines unabhängigen Prüfinstitutes über ≥100,000 Scheuertouren erhalten Sie von unserem Vertriebsdienst oder auf unserer Webseite. Intern spezifizieren wir auch dieses Produkt mit >100,000 Scheuertouren, die in der Serienfertigung als realistisch angenommen werden. Bitte nehmen Sie zur Kenntnis, dass die Scheuerfestigkeitsprüfung allein keine Aussagekraft über die Langlebigkeit eines Bezugsstoffes hat. Wir sind von der Langlebigkeit unserer Produkte überzeugt und bieten daher 10 Jahre Garantie (Details auf Anfrage). Eine optimale Nahtausreissfestigkeit hängt von der Nahtfahne, der verwendeten Nadel und dem Näh-Garn ab. Wir empfehlen daher Nähveruche durchzuführen. Handelsübliche Farbabweichungen können auftreten und berechtigen nicht zur Reklamation. Wir behalten uns die Änderung technischer Spezifikationen vor. Die registrierten und nicht registrierten Urheberrechte der Dessinierungen sind ausschliessliches Eigentum der Camira Fabrics Limited.

F

Composition

95% Laine Vierge, 5% Polyamid

Écologique

Avec le certificat EU Ecolabel
Certifié à Indoor Advantage™ Gold

Largeur

140 cm minimum

Poids

400 g/m² ±5% (560 g/m.l ±5%)

Résistance à l'abrasion*

Usage intense/Garantie 10 ans
Certificat indépendant ≥100,000 cycles
Martindale

Flammabilité

EN 1021 - 1 (cigarette)
EN 1021 - 2 (allumette)
BS 7176 Low Hazard
NF D 60-013
ÖNORM B 3825 & A 3800-1 (avec CMHR 58kg/m³ Mousse)
UNI 9175 Classe 1 IM
EN 13501-1 Adhered Class D, s1, d0
IMO FTP Code (Part 8)
The Furniture and Furnishing (Fire Safety) Regulations 1988 (UK domicile cigarette et allumette)

Prêre de le mentionner lors de la commande:

BS 5852 Ignition Source 5 si traitement FR
BS 7176 Medium Hazard si traitement FR
EN 13501-1 Adhered Class B, s1, d0 si traitement FR
EN 13501-1 Un-adhered Class D, s2, d0 si traitement FR
BS 5867-2: Type B Curtains & Drapes si traitement FR

Notez: La performance de flammabilité dépend des composantes utilisées. Nos certificats indiquent les substrats utilisés dans nos tests. Pour les tests composites, les clients doivent s'assurer que leurs meubles complets satisfont aux normes nécessaires.

Solidité à la lumière

5 (ISO 105 - B02)

Solidité au Frottement

Mouillé: 4, Sec: 4 (ISO 105 - X12)

Propriétés Acoustiques

Acoustiquement transparent. Graphiques acoustiques disponibles sur demande.

Nettoyage

Passez l'aspirateur régulièrement. Essayez avec un chiffon humide en utilisant un shampooing/savon pour tissu d'ameublement exclusif. Pour un nettoyage en profondeur, utilisez la vapeur ou un nettoyage à sec professionnel. Vous trouverez tous les détails dans notre guide de nettoyage et de désinfection.

*Les tests de résistance à l'abrasion proposent une large variété de résultat final, parfois sur le même échantillon de tissu. Le certificat indépendant de ≥100,000 cycles est disponible sur notre site internet; vous pouvez également contacter notre Service Clients. Nous validons également – en interne – à >100,000 cycles; ce qui est, d'après nous, plus réaliste dans le but d'obtenir une continuité égale des résultats de tests. Merci de noter que l'abrasion seule ne constitue pas un indicateur de confiance dans la performance du tissu à long terme. Nous avons une confiance absolue en nos produits et leur durabilité, c'est pour cela que nous vous offrons une garantie robuste de 10 ans. Veuillez noter que la performance du joint dépend de sa construction ainsi que de l'aiguille et du type de fil utilisés. Une variation de couleurs peut provenir (commerciallement tolérable). Nous réservons le droit de changer les spécifications techniques sans préavis. Les Droits de Conception non-enregistrés et les droits d'auteur de tous les motifs sont la propriétés exclusives de Camira Fabrics Limited.

ES

Composición

95% Lana Virgen, 5% Poliamid

Ambiental

Garantía de 10 años con uso intenso
Certificado de Indoor Advantage™ Gold

Ancho

140 cm mínimo

Peso

400 g/m² ±5% (560 g/lin.m ±5%)

Resistencia a la abrasión*

Garantía de 10 años con uso intenso
independientemente del certificado de ≥100,000 Ciclos Martindale

Inflamabilidad

EN 1021 - 1 (cigarrillo)
EN 1021 - 2 (cerilla)
BS 7176 Low Hazard
NF D 60-013
ÖNORM B 3825 & A 3800-1 (sobre 58kg/m³ Foam CMHR)
UNI 9175 Classe 1 IM
EN 13501-1 Adhered Class D, s1, d0
IMO FTP Code (Part 8)
The Furniture and Furnishing (Fire Safety) Regulations 1988 (UK doméstico cigarrillo y cerilla)

Por favor especificar cuando se requiere en el pedido:

BS 5852 Ignition Source 5 estando con tratamiento FR
BS 7176 Medium Hazard estando con tratamiento FR
EN 13501-1 Adhered Class B, s1, d0 estando con tratamiento FR
EN 13501-1 Un-adhered Class D, s2, d0 estando con tratamiento FR
BS 5867-2: Type B Curtains & Drapes estando con tratamiento FR

Nota: El rendimiento de la inflamabilidad depende de los componentes usados. Nuestros certificados muestran qué substratos se han usado en nuestros tests. Para tests compuestos nuestros clientes deben asegurar si sus muebles cumplen la normativa al uso.

Solidez a la luz

5 (ISO 105 - B02)

Solidez al rozamiento

Húmedo: 4, Seco: 4 (ISO 105 - X12)

Acústico Propiedades

Acústicamente transparente. Gráficos disponibles bajo petición.

Limpieza

Uso aspirador regularmente. Limpiar con un trapo usando jabón y agua o producto limpieza para tapicerías. Para una limpieza más profunda usen vapor o limpieza en seco profesional. Los detalles completos se encuentran en nuestra guía de limpieza y desinfección.

*Los Test de Abrasión producen unos resultados muy variables incluso con la misma muestra. El certificado de ≥100,000 ciclos Martindale está disponible en nuestra web o se puede pedir al Departamento Comercial. Internamente también certificamos este producto > 100,000 ciclos, que pensamos que es lo más realista posible en este caso, con una repetición de resultados tan dispares. Tengan en cuenta que el Test de Abrasión solo no es un indicador fiable sobre el desgaste de un tejido. De hecho, estamos tan convencidos en la durabilidad de nuestros tejidos, que ofrecemos una garantía de 10 años (detalles completos disponibles). Tenga en cuenta que el rendimiento de la costura depende de la construcción de la costura, además de la aguja y del tipo de rosca. Le recomendamos que se aconsejen para coser la costura. Las variaciones de lote a lote en la sombra se puede producir dentro de tolerancias comerciales. Nos reservamos el derecho a efectuar modificaciones técnicas sin previo aviso. Los derechos sobre los diseños no registrados y los derechos de autor en todos los diseños son propiedad exclusiva de Camira Fabrics Limited.

Steelcut 3

Steelcut Trio 3

Steelcut 3

Standard Collection

profim

Steelcut 3

grupa
cenowa ④

190
655

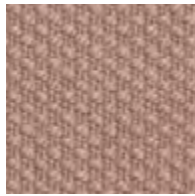
Extended Collection

Wszystkie kolory poza standardowymi dostępne są z terminem realizacji 6-8 tygodni. Szczegóły wyceny dostępne są u właściwego RDS (Regionalnego Dyrektora Sprzedaży).

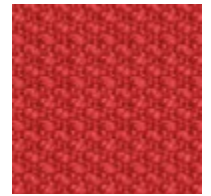
kvadrat



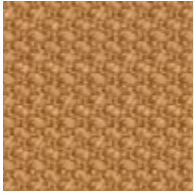
452



605



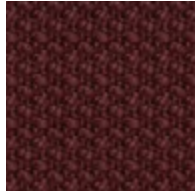
552



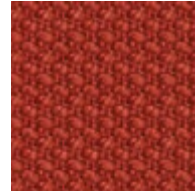
252



402



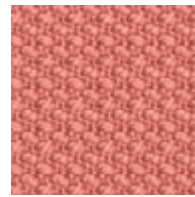
682



562



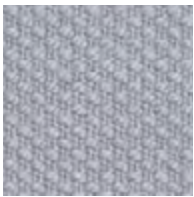
445



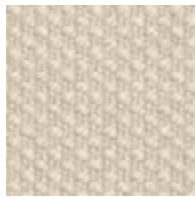
612



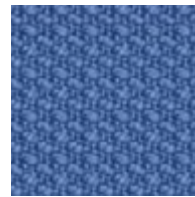
545



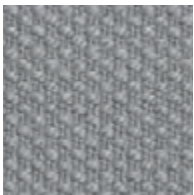
120



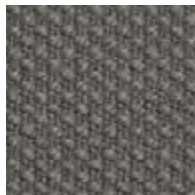
110



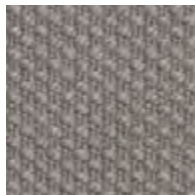
732



140



160



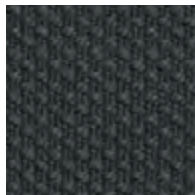
155



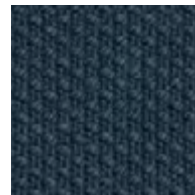
742



190



180

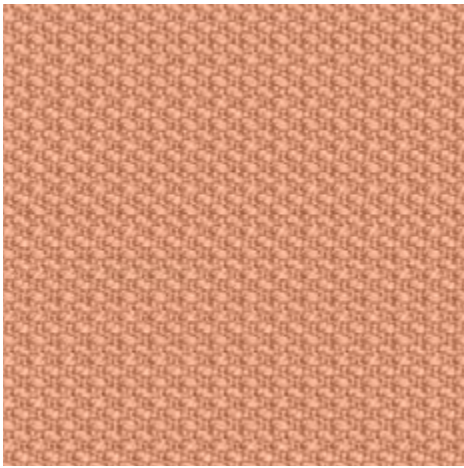


780

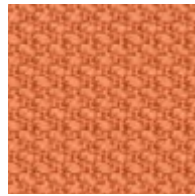


775

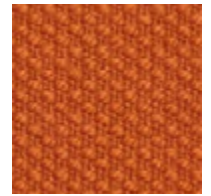
Steelcut 3



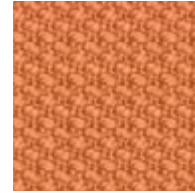
502



522



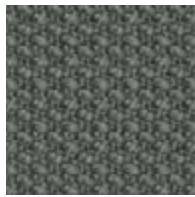
535



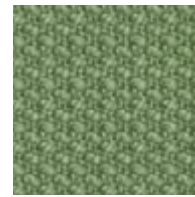
512



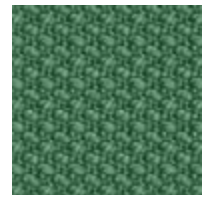
975



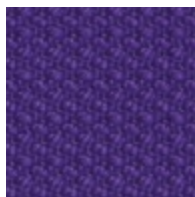
922



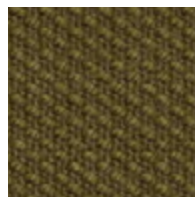
912



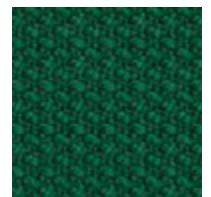
932



662



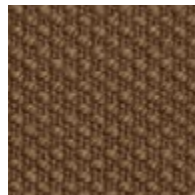
985



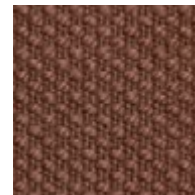
962



652



265



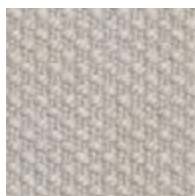
365



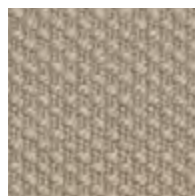
655



672



220



240



695

Steelcut 3

Designed by Frans Dijkmeijer and Giulio Ridolfo

DK

Anvendelse Kontorer, hoteller, institutioner, private indretninger. Stor slidstyrke.

Beskrivelse 90% ny uld, kamgarn, 10% nylon. Bredde ca. 140 cm. Vægt ca. 825 g/lbm. Stykfarvet. I lyse farver kan fremmede fibre forekomme. Nuanceforskelle kan forekomme.

Ægkant ↓

Slidstyrke: Ca. 100.000 slidbevægelser efter Martindale metoden EN ISO 12947. **Lysægthed** (ISO) 5-6. **Pilling** (EN ISO) 3-4. **Gnidægthed** (ISO) tør 4-5, våd 3-5. **Lydsorption** (EN ISO 354) 0.65/Class C (fladt), 0.80/Class B (foldet). **Airflow** 1014 Pa s/m. **Flammesikring:** AS/NZS 1530.3. AS/NZS 3837 Class 2. ASTM E84 Class A hæftet. ASTM E84 Class B limet. BS 5852 Crib 5 med flammesikring. BS 5852 part 1. EN 1021-1/2. IMO FTP Code 2010:Part 8. NF D 60 013. NFPA 260. SN 198 898 5.3 med flammesikring. UNI 9175 11M. US Cal. Bull. 117-2013. ÖNORM B2 / Q1. (Kopi af testrapport kan rekvireres). **Vedligeholdelse** Se ISO symboler. Desinfektion, se kvadrat.dk.

UK/US

Application Offices, hotels, institutions, domestic use. Great durability.

Description 90% new wool, worsted, 10% nylon. Width app. 55 inches (140 cm). Weight app. 825 g/lin.m, 26.6 oz/ly. Piece dyed. Foreign fibres may occur in light colours. Colour differences may occur.

Selvedge/Direction ↓

Abrasion: App. 100,000 rubs acc. to the Martindale method EN ISO 12947. **Lightfastness** (ISO) 5-6. **Pilling** (EN ISO) 3-4. **Fastness to rubbing** (ISO) dry 4-5, wet 3-5. **Sound absorption** (EN ISO 354) 0.65/Class C (flat), 0.80/Class B (waved). **Airflow** 1014 Pa s/m. **Flame resistance:** AS/NZS 1530.3. AS/NZS 3837 Class 2. ASTM E84 Class A unadhered. ASTM E84 Class B adhered. BS 5852 Crib 5 with treatment. BS 5852 part 1. EN 1021-1/2. IMO FTP Code 2010:Part 8. NF D 60 013. NFPA 260. SN 198 898 5.3 with treatment. UNI 9175 11M. US Cal. Bull. 117-2013. ÖNORM B2 / Q1. (Copy of test report available). **Care** Please see the ISO symbols. Disinfection, see kvadrat.dk.

DE

Anwendungsbereich Büros, Hotels, Objectbereich, privaten Wohnbereich. Hohe Strapazierfähigkeit.

Beschreibung 90% Schurwolle, Kammgarn, 10% Nylon. Breite ca. 140 cm. Gewicht ca. 825 g/m. Stückgefärbt. In hellen Farben können Fremdfasern vorkommen. Farbunterschiede können vorkommen.

Webkante ↓

Scheuerfestigkeit: Ca. 100.000 Scheuerhübe nach der Martindale Methode EN ISO 12947. **Lichtechtheit** (ISO) 5-6. **Pilling** (EN ISO) 3-4. **Reibechtheit** (ISO) trocken 4-5, nass 3-5. **Schallabsorption** (EN ISO 354) 0.65/Class C (glatt), 0.80/Class B (gefaltet). **Airflow** 1014 Pa s/m. **Flammschutz:** AS/NZS 1530.3. AS/NZS 3837 Class 2. ASTM E84 Class A unverklebt. ASTM E84 Class B verklebt. BS 5852 Crib 5 mit Ausrüstung. BS 5852 part 1. EN 1021-1/2. IMO FTP Code 2010:Part 8. NF D 60 013. NFPA 260. SN 198 898 5.3 mit Ausrüstung. UNI 9175 11M. US Cal. Bull. 117-2013. ÖNORM B2 / Q1. (Testbericht verfügbar).

Pflege Siehe ISO Pflegesymbole. Desinfektion, siehe kvadrat.dk.

NL

Toepassing Kantoren, hotels, instellingen, de privéfeer. Uitstekende slijtvastheid.

Omschrijving 90% scheerwol, kamgaren, 10% nylon. Breedte ca. 140 cm. Gewicht ca. 825 g/str. m. Stukgeverfd. Afwijkende vezels kunnen voorkomen in lichte kleuren. Kleurverschillen kunnen optreden.

Zelfkant ↓

Slijtvastheid: Ca. 100.000 toeren Martindale EN ISO 12947. **Lichtechtheid** (ISO) 5-6. **Pilling** (EN ISO) 3-4. **Wrijftechtheid** (ISO) droge 4-5, natte 3-5. **Geluidsabsorptie** (EN ISO 354) 0.65/Class C (vlak), 0.80/Class B (geplooid). **Airflow** 1014 Pa s/m. **Brandwerendheid:** AS/NZS 1530.3. AS/NZS 3837 Class 2. ASTM E84 Class A ongelijmd. ASTM E84 Class B gelijmd. BS 5852 Crib 5 met behandeling. BS 5852 part 1. EN 1021-1/2. IMO FTP Code 2010:Part 8. NF D 60 013. NFPA 260. SN 198 898 5.3 met behandeling. UNI 9175 11M. US Cal. Bull. 117-2013. ÖNORM B2 / Q1. (Op aanvraag sturen wij graag een kopie van het testrapport toe). **Onderhoud** Zie de ISO symbolen. Desinfectie, kvadrat.dk.

FR

Domaine d'utilisation Tissu d'ameublement pour aménagement privé et public. Grande résistance.

Description 90% laine vierge, peigné, 10% nylon. Largeur env. 140 cm. Poids env. 825 g/m lg. Teinture à la pièce. Dans les couleurs claires, présence de fibres étrangères. Ecart des coloris possibles.

Lisière ↓

Résistance à l'abrasion: Env. 100.000 révolutions selon le procédé Martindale EN ISO 12947. **Résistance à la lumière** (ISO) 5-6. **Boulochage** (EN ISO) 3-4. **Résistance au frottement** (ISO) sec 4-5, mouillé 3-5. **Absorption acoustique** (EN ISO 354) 0.65/Class C (à plat), 0.80/Class B (plié). **Airflow** 1014 Pa s/m. **Normes au feu:** AS/NZS 1530.3. AS/NZS 3837 Class 2. ASTM E84 Class A non collé. ASTM E84 Class B collé. BS 5852 Crib 5 avec traitement. BS 5852 part 1. EN 1021-1/2. IMO FTP Code 2010:Part 8. NF D 60 013. NFPA 260. SN 198 898 5.3 avec traitement. UNI 9175 11M. US Cal. Bull. 117-2013. ÖNORM B2 / Q1. (La copie du compte rendu des tests est disponible sur demande). **Entretien** Voir les symboles ISO. Désinfection, voir kvadrat.dk.

IT

Destinazione d'uso Rivestimenti per imbottiti, casa e contract. Alta resistenza all'abrasione.

Caratteristiche 90% lana vergine, pettinata, 10% nylon. Altezza circa 140 cm. Peso circa 825 gr/mtl. Tinto in pezza. Nei colori chiari possono essere presenti fibre di tonalità scure. Possibili differenze per colore.

Cimosa ↓

Resistenza all'abrasione: circa 100.000 cicli/metodo Martindale EN ISO 12947. **Resistenza alla luce** (ISO) 5-6. **Pilling** (EN ISO) 3-4. **Resistenza allo sfregamento** (ISO) condizione a secco 4-5, condizione umido 3-5. **Assorbimento acustico** (EN ISO 354) 0.65/Class C (a pannello (tesa)), 0.80/Class B (arricciata). **Airflow** 1014 Pa s/m. **Ignifugazione:** AS/NZS 1530.3. AS/NZS 3837 Class 2. ASTM E84 Class A non incollato. ASTM E84 Class B incollato. BS 5852 Crib 5 se trattato ignifugo. BS 5852 part 1. EN 1021-1/2. IMO FTP Code 2010:Part 8. NF D 60 013. NFPA 260. SN 198 898 5.3 se trattato ignifugo. UNI 9175 11M. US Cal. Bull. 117-2013. ÖNORM B2 / Q1. (Disponibile copia del test). **Manutenzione** Per favore seguire simboli ISO. Per disinfettare, vedi il sito kvadrat.dk.

ES

Aplicación Adecuado para el uso en oficinas, hoteles, instituciones y hogares. Gran resistencia al desgaste.

Descripción 90% lana virgen, peinada, 10% nilón. Anchura aprox. 140 cm. Peso aprox. 825 gr/ml. Teñido en pieza. En los colores claros puede haber fibras de otro color. Posibles variaciones de color.

Filo ↓

Resistencia al desgaste: Aprox. 100.000 ciclos según el método Martindale EN ISO 12947. **Resistencia a la luz** (ISO) 5-6. **Relleno** (EN ISO) 3-4. **Solidez al frotamiento** (ISO) seco 4-5, mojado 3-5. **Absorción acústica** (EN ISO 354) 0.65/Class C (estor), 0.80/Class B (cortina). **Airflow** 1014 Pa s/m. **Resistencia al fuego:** AS/NZS 1530.3. AS/NZS 3837 Class 2. ASTM E84 Class A sin pegar. ASTM E84 Class B pegado. BS 5852 Crib 5 con tratamiento. BS 5852 part 1. EN 1021-1/2. IMO FTP Code 2010:Part 8. NF D 60 013. NFPA 260. SN 198 898 5.3 con tratamiento. UNI 9175 11M. US Cal. Bull. 117-2013. ÖNORM B2 / Q1. (Copia del informe de ensayos disponible). **Limpieza** Consulte los símbolos ISO. Desinfección, visita kvadrat.dk.

JP

用途 オフィス、ホテル、各種施設、住宅インテリア。耐耗性大。

詳細 ニューウール、ウーステッド 90%、ナイロン 10%。幅: 140cm。重量: 1m あたり約 825 gr。後染め、明色の場合、異質繊維が混在する場合があります。色に多少の違いが生じる場合があります。

セルピッチ ↓

テスト

磨耗: マーチンデール法により摩擦運動約 100,000 回。EN ISO 12947. **耐光性:** (ISO) 5-6. **ピリング** (EN ISO) 3-4. **摩擦保証:** (ISO) 乾燥状態 4-5、濡れた状態 3-5. **吸音率** (EN ISO 354) 0.65/Class C (パネル状)、0.80/Class B (ドレープ状). **気流:** 1014 Pa s/m. **防火性:** AS/NZS 1530.3. AS/NZS 3837 Class 2. ASTM E84 Class A unadhered. ASTM E84 class B 耐火性レベル1。特殊耐炎処理を行うことにより、BS 5852 Crib 5 に到達可能。BS 5852 part 1. EN 1021-1/2. IMO FTP Code 2010:Part 8. NF D 60 013. NFPA 260. 特殊耐炎処理を行うことにより、SN 198 898 5.3 に到達可能。UNI 9175 11M. US Cal. Bull. 117-2013. ÖNORM B2 / Q1. (認定書類のご用意あり。)

お手入れ

ISO シンボル参照。消毒について? kvadrat.dk まで参照ください。

CN

适用范围 办公室、宾馆酒店、公共设施、居家使用。耐耗性大。

成分 90% 新羊毛，精纺，10% 尼龙。幅宽约 55 英寸 (140 cm)。重量 825 克/延米。匹染色面料。颜色可能稍有色差。

图纹方向 ↓

马丁代尔法 约 100,000 转。EN ISO 12947. **光照色牢度** (ISO) 5-6. **起毛起球** (EN ISO) 3-4. **摩擦色牢度** (ISO) 干燥 4-5, 湿 3-5. **吸音系数** (EN ISO 354) 0.65/Class C (隔断帘), 0.80/Class B (一般窗帘使用). **气流阻力** 1014 Pa s/m. **阻燃性:** AS/NZS 1530.3. AS/NZS 3837 Class 2. ASTM E84 Class A unadhered. ASTM E84 Class B 防火等级 1。特别耐火处理时 BS 5852 Crib 5 可以满足。BS 5852 part 1. EN 1021-1/2. IMO FTP Code 2010:Part 8. NF D 60 013. NFPA 260. 特别耐火处理时 SN 198 898 5.3 可以满足。UNI 9175 11M. US Cal. Bull. 117-2013. ÖNORM B2 / Q1. (可提供测试报告副本)。 **维护** 请参照 ISO 标志。消毒请参阅 kvadrat.dk。



Quality and environmental system accreditation according to ISO 9001 and ISO 14001.

* ACT® Registered Certification Marks

* Abrasion test results exceeding ACT performance guidelines are not an indicator of product lifespan. Multiple factors affect fabric durability and appearance retention.

EU Ecolabel: Encouraging the use of sustainable fibres. Durable and high quality. Hazardous substances restricted.

Contact and further information kvadrat.dk

10 year warranty



US contact info: 1-800-620-9309

Steelcut Trio 3

Standard Collection

profim

Steelcut Trio 3

grupa
cenowa ④

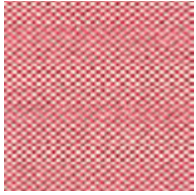
133	276
153	383
213	645
253	796

Extended Collection

Wszystkie kolory poza standardowymi dostępne są z terminem realizacji 6-8 tygodni. Szczegóły wyceny dostępne są u właściwego RDS (Regionalnego Dyrektora Sprzedaży).

kvadrat

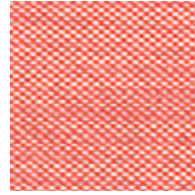
Steelcut Trio 3



636



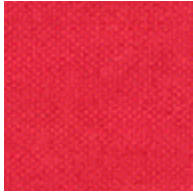
553



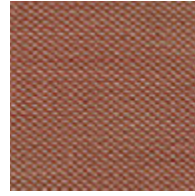
526



686



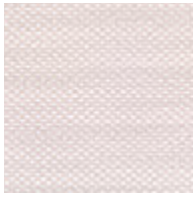
666



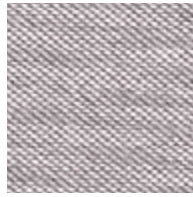
515



645



226



616



205



506



236



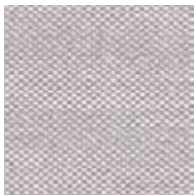
213



446



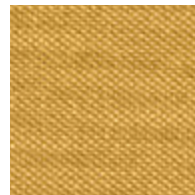
453



246

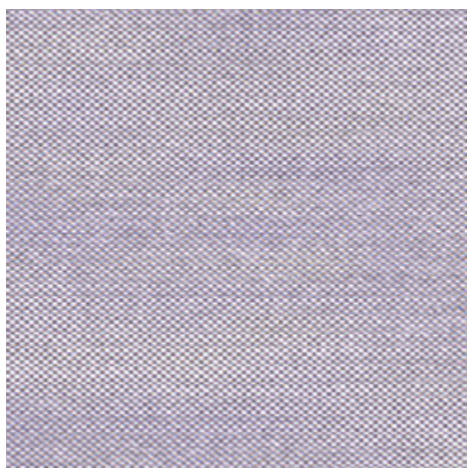


253

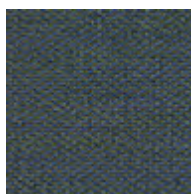


466

Steelcut Trio 3



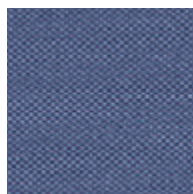
806



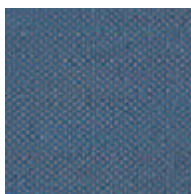
883



865



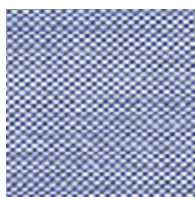
796



756



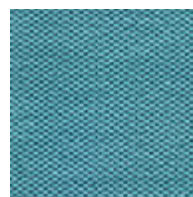
746



716



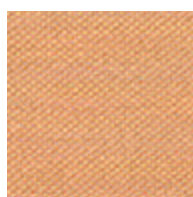
776



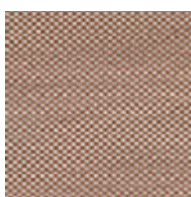
983



533



436



476



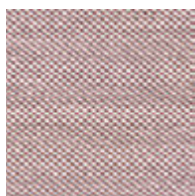
576



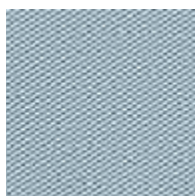
426



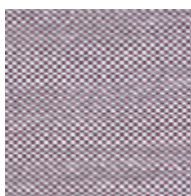
376



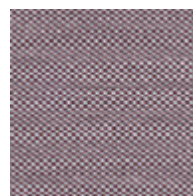
416



713

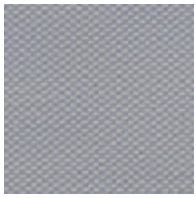


336

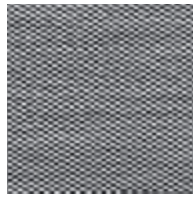


276

Steelcut Trio 3



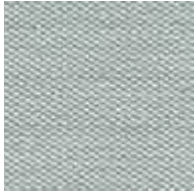
105



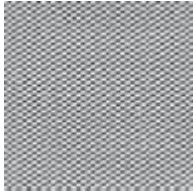
124



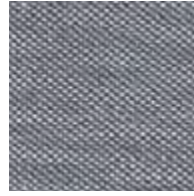
195



113



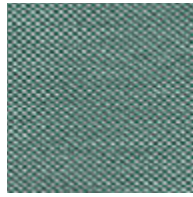
133



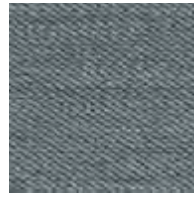
176



266



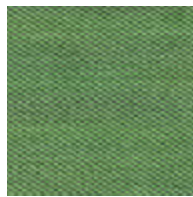
966



153



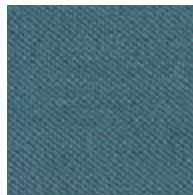
946



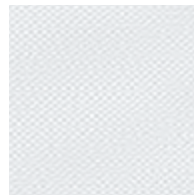
953



283



996



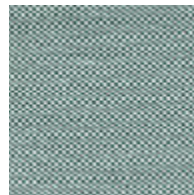
906



383



976



916

Steelcut Trio 3

Designed by Frans Dijkmeijer and Giulio Ridolfo

DK

Anvendelse Kontorer, hoteller, institutioner, private indretninger. Stor slidstyrke.

Beskrivelse 90% ny uld, kamgarn, 10% nylon. Bredde ca. 140 cm. Vægt ca. 770 g/lbm. Garnfarvet. Nuanceforskelle kan forekomme.

Ægkant ↓

Slidstyrke: Ca. 100.000 slidbevægelser efter Martindale metoden EN ISO 12947. **Lysægthed** (ISO) 5-7. **Pilling** (EN ISO) 4. **Gnidægthed** (ISO) tør 4-5, våd 3-5. **Lydsorption** (EN ISO 354) 0.70/Class C (fladt), 0.95/Class A (foldet). **Airflow** 910 Pa s/m. **Flammesikring:** AS/NZS 1530.3. AS/NZS 3837 Class 2. BS 5852 Crib 5 med flammesikring. BS 5852 ignition source 3. BS 5852 part 1. EN 1021-1/2. GB 50222 B1 med flammesikring. IMO FTP Code 2010:Part 8. NF D 60 013. NFPA 260. SN 198 898 5.3 med flammesikring. UNI 9175 11M. US Cal. Bull. 117-2013. ÖNORM B1 / Q1. (Kopi af testrapport kan rekvireres).

Vedligeholdelse Se ISO symboler.

UK/US

Application Offices, hotels, institutions, domestic use. Great durability.

Description 90% new wool, worsted, 10% nylon. Width app. 55 inches (140 cm). Weight app. 24.7 oz/ly (770 g/lin.m). Yarn dyed. Colour differences may occur.

Selvedge/Direction ↓

Abrasion: App. 100,000 rubs acc. to the Martindale method EN ISO 12947. **Lightfastness** (ISO) 5-7. **Pilling** (EN ISO) 4. **Fastness to rubbing** (ISO) dry 4-5, wet 3-5. **Sound absorption** (EN ISO 354) 0.70/Class C (flat), 0.95/Class A (waved). **Airflow** 910 Pa s/m. **Flame resistance:** AS/NZS 1530.3. AS/NZS 3837 Class 2. BS 5852 Crib 5 with treatment. BS 5852 ignition source 3. BS 5852 part 1. EN 1021-1/2. GB 50222 B1 with treatment. IMO FTP Code 2010:Part 8. NF D 60 013. NFPA 260. SN 198 898 5.3 with treatment. UNI 9175 11M. US Cal. Bull. 117-2013. ÖNORM B1 / Q1. (Copy of test report available).

Care Please see the ISO symbols.

DE

Anwendungsbereich Büros, Hotels, Objectbereich, privaten Wohnbereich, Hohe Strapazierfähigkeit.

Beschreibung 90% Schurwolle, Kammgarn. 10% Nylon. Breite ca. 140 cm. Gewicht ca. 770 g/m. Garngefärbt. Farbunterschiede können vorkommen.

Webkant ↓

Scheuerfestigkeit: Ca. 100.000 Scheuerhübe nach der Martindale Methode EN ISO 12947. **Lichtechtheit** (ISO) 5-7. **Pilling** (EN ISO) 4. **Reibechtheit** (ISO) trocken 4-5, nass 3-5. **Schallabsorption** (EN ISO 354) 0.70/Class C (glatt), 0.95/Class A (gefaltet). **Airflow** 910 Pa s/m. **Flammenschutz:** AS/NZS 1530.3. AS/NZS 3837 Class 2. BS 5852 Crib 5 mit Ausrüstung. BS 5852 ignition source 3. BS 5852 part 1. EN 1021-1/2. GB 50222 B1 mit Ausrüstung. IMO FTP Code 2010:Part 8. NF D 60 013. NFPA 260. SN 198 898 5.3 mit Ausrüstung. UNI 9175 11M. US Cal. Bull. 117-2013. ÖNORM B1 / Q1. (Testbericht verfügbar).

Pflege Siehe ISO Pflegesymbole.

NL

Toepassing Kantoren, hotels, instellingen, de privéfeer. Uitstekende slijtvastheid.

Omschrijving 90% scheerwol, kamgaren, 10% nylon. Breedte ca. 140 cm. Gewicht ca. 770 gr/str. m. Garegeverfd. Kleurverschillen kunnen optreden.

Zelfkant ↓

Slijtvastheid: Ca. 100.000 toeren Martindale EN ISO 12947. **Lichtechtheid** (ISO) 5-7. **Pilling** (EN ISO) 4. **Wrijftechtheid** (ISO) droge 4-5, natte 3-5. **Geluidsabsorptie** (EN ISO 354) 0.70/Class C (vlak), 0.95/Class A (geplooid). **Airflow** 910 Pa s/m. **Brandwerendheid:** AS/NZS 1530.3. AS/NZS 3837 Class 2. BS 5852 Crib 5 met behandeling. BS 5852 ignition source 3. BS 5852 part 1. EN 1021-1/2. GB 50222 B1 met behandeling. IMO FTP Code 2010:Part 8. NF D 60 013. NFPA 260. SN 198 898 5.3 met behandeling. UNI 9175 11M. US Cal. Bull. 117-2013. ÖNORM B1 / Q1. (Op aanvraag sturen wij u graag een kopie van het testrapport toe).

Onderhoud Zie de ISO symbolen.

FR

Domaine d'utilisation Tissu d'ameublement pour aménagement privé et public. Grande résistance.

Description 90% laine vierge, peignée, 10% nylon. Largeur env. 140 cm. Poids env. 770 g/m lg. Teinture sur fil. Ecart des coloris possibles.

Lisière ↓

Résistance à l'abrasion: Env. 100.000 révolutions selon le procédé Martindale EN ISO 12947. **Résistance à la lumière** (ISO) 5-7. **Boulochage** (EN ISO) 4. **Résistance au frottement** (ISO) sec 4-5, mouillé 3-5. **Absorption acoustique** (EN ISO 354) 0.70/Class C (à plat), 0.95/Class A (plié). **Airflow** 910 Pa s/m. **Normes au feu:** AS/NZS 1530.3. AS/NZS 3837 Class 2. BS 5852 Crib 5 avec traitement. BS 5852 ignition source 3. BS 5852 part 1. EN 1021-1/2. GB 50222 B1 avec traitement. IMO FTP Code 2010:Part 8. NF D 60 013. NFPA 260. SN 198 898 5.3 avec traitement. UNI 9175 11M. US Cal. Bull. 117-2013. ÖNORM B1 / Q1. (La copie du compte rendu des tests est disponible sur demande).

Entretien Voir les symboles ISO.

IT

Destinazione d'uso Rivestimenti per imbottiti, casa e contract. Alta resistenza all'abrasione.

Caratteristiche 90% lana vergine, pettinata, 10% nylon. Altezza circa 140 cm. Peso circa 770 gr/mtl. Tinto in filo. Possibili differenze per colore.

Cimosa ↓

Resistenza all'abrasione: circa 100.000 cicli/metodo Martindale EN ISO 12947. **Resistenza alla luce** (ISO) 5-7. **Pilling** (EN ISO) 4. **Resistenza allo sfregamento** (ISO) condizione a secco 4-5, condizione umido 3-5. **Assorbimento acustico** (EN ISO 354) 0.70/Class C (tenda a pannello (tesa)), 0.95/Class A (tenda arricciata). **Airflow** 910 Pa s/m. **Ignifugazione:** AS/NZS 1530.3. AS/NZS 3837 Class 2. BS 5852 Crib 5 trattato ignifugo. BS 5852 ignition source 3. BS 5852 part 1. EN 1021-1/2. GB 50222 B1 trattato ignifugo. IMO FTP Code 2010:Part 8. NF D 60 013. NFPA 260. SN 198 898 5.3 trattato ignifugo. UNI 9175 11M. US Cal. Bull. 117-2013. ÖNORM B1 / Q1. (Disponibile copia del test).

Manutenzione Per favore seguire simboli ISO.

ES

Aplicación Adecuado para el uso en oficinas, hoteles, instituciones y hogares. Gran resistencia al desgaste.

Descripción 90% lana virgen, peinada, 10% nilón. Anchura aprox. 140 cm. Peso aprox. 770 gr/ml. Hilo teñido. Posibles variaciones de color.

Filo ↓

Resistencia al desgaste: Aprox. 100.000 ciclos según el método Martindale EN ISO 12947. **Resistencia a la luz** (ISO) 5-7. **Relleño** (EN ISO) 4. **Solidez al frotamiento** (ISO) seco 4-5, mojado 3-5. **Absorción acústica** (EN ISO 354) 0.70/Class C (estor), 0.95/Class A (cortina). **Airflow** 910 Pa s/m. **Resistencia al fuego:** AS/NZS 1530.3. AS/NZS 3837 Class 2. BS 5852 Crib 5 con tratamiento. BS 5852 ignition source 3. BS 5852 part 1. EN 1021-1/2. GB 50222 B1 con tratamiento. IMO FTP Code 2010:Part 8. NF D 60 013. NFPA 260. SN 198 898 5.3 con tratamiento. UNI 9175 11M. US Cal. Bull. 117-2013. ÖNORM B1 / Q1. (Copia del informe de ensayos disponible).

Limpieza Consulte los símbolos ISO.

JP

用途 オフィス、ホテル、各種施設、住宅インテリア。耐耗性大。

詳細 90% ニューウール。ウーステッド、10% ナイロン。幅:140cm。重量:1mあたり約770gr。糸染め。明色の場合、異質繊維が混在する場合があります。色彩ニューアンスに多少の違いが生じる可能性あり。

耳、ふち ↓**テスト**

磨耗: マーチンデール法により摩擦運動約100,000回。EN ISO 12947. **色褪せ保証:** (ISO) 5-7. **ピリング** (EN ISO) 4. **摩擦保証:** (ISO) 乾燥状態 4-5、濡れた状態 3-5. **吸音率** (EN ISO 354) 0.70/Class C (バネル状)、0.95/Class A (ドレープ状). **気流:** 910 Pa s/m. **耐炎性:** AS/NZS 1530.3. AS/NZS 3837 Class 2. 特殊耐炎処理を行うことにより、BS 5852 Crib 5 に到達可能。BS 5852 ignition source 3. BS 5852 part 1. EN 1021-1/2. 特殊耐炎処理を行うことにより、GB 50222 B1 に到達可能。IMO FTP Code 2010:Part 8. NF D 60 013. NFPA 260. 特殊耐炎処理を行うことにより、SN 198 898 5.3 に到達可能。UNI 9175 11M. US Cal. Bull. 117-2013. ÖNORM B1 / Q1. (テストレポートコピー入手可能。)

手入れ

ISO シンボル参照。

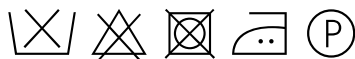
CN

适用范围 办公室, 宾馆酒店, 公共设施, 居家使用。耐耗性大。

成分 90%新羊毛, 精纺, 10%尼龙。幅宽约55英寸(140 cm)。重量770克/延米, 纱染色面料。颜色可能稍有色差。

织边方向 ↓

马丁代尔法约100,000转。EN ISO 12947. **光照色牢度** (ISO) 5-7. **起毛起球** (EN ISO) 4. **摩擦色牢度** (ISO) 干燥4-5, 湿3-5. **吸声系数** (EN ISO 354) 0.70/Class C (隔帘布), 0.95/Class A (一般窗帘使用). **气流阻力** 910 Pa s/m. **阻燃性:** AS/NZS 1530.3. AS/NZS 3837 Class 2. 特别耐火处理时BS 5852 Crib 5 可以满足。BS 5852 ignition source 3. BS 5852 part 1. EN 1021-1/2. 特别耐火处理时GB 50222 B1 可以满足。IMO FTP Code 2010:Part 8. NF D 60 013. NFPA 260. 特别耐火处理时SN 198 898 5.3 可以满足。UNI 9175 11M. US Cal. Bull. 117-2013. ÖNORM B1 / Q1. (可提供测试报告副本)。 **维护** 请参照ISO标志。



10 year warranty



Quality and environmental system accreditation according to ISO 9001 and ISO 14001.

*ACT® Registered Certification Marks

Encouraging the use of sustainable fibres. Durable and high quality. Hazardous substances restricted.

Contact and further information www.kvadrat.dk

US contact info: 1-800-620-9309

Skóra
Leather
Leder

Premium

Ascot

BASIC

Standard Collection profim

Skóra Premium grupa cenowa ⑥

2180	2875
2760	2900
2840	
2845	



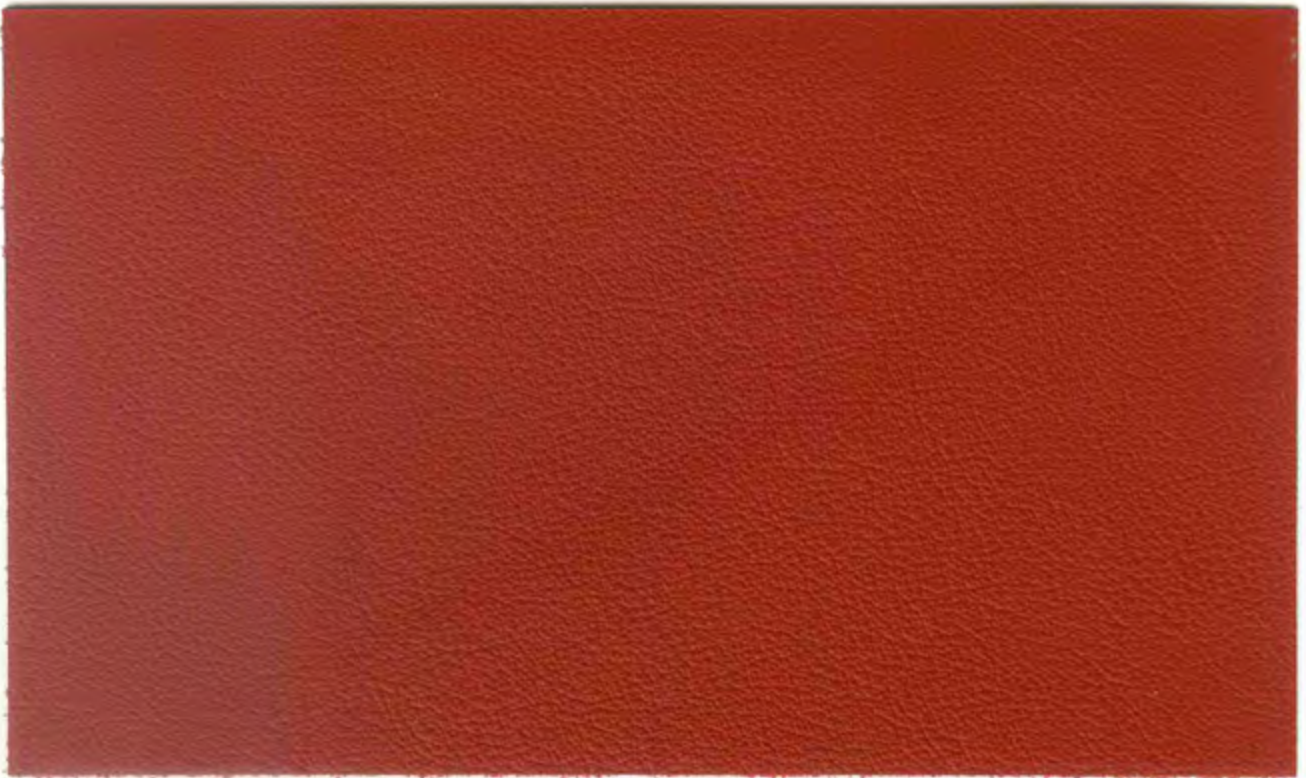
gmelichleder

Extended Collection

Wszystkie kolory poza standardowymi dostępne są z terminem realizacji 6-8 tygodni. Szczegóły wyceny dostępne są u właściwego RDS (Regionalnego Dyrektora Sprzedaży).

das Leder für Anspruchsvolle
leading the way in leather

Ascot



pumpkin 2420



oxblood 2430



cherry 2425



pumpkin 2420



cognac 2435



viola 2440



rubin 2360



salmon 2410



aubergine 2480



mohn 2340



orange 2415



brasil 2855



redbrown 2860



mocca 2880



black 2900



brandy 2850



cioccolata 2875



hazelnut 2845



caramel 2840



cocos 2160



pearl 2180



mirabelle 2260



ecru 2155



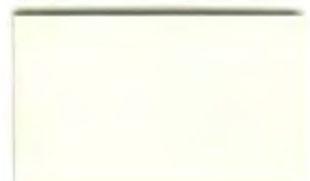
white 2100



almond 2150



sand 2140



offwhite 2110



blue 2580



lupine 2530



heaven 2520



indigo 2560



royal 2540



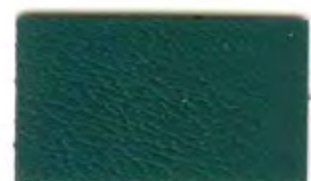
agave 2620



grape 2535



kobalt 2550



amazonas 2660



violet 2390



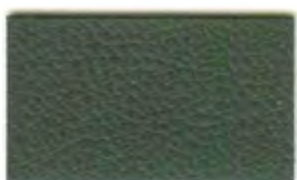
mole 2780



jade 2680



granite 2760



rock 2750



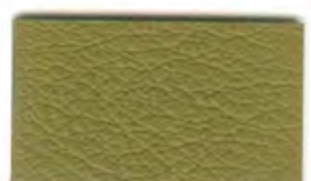
olive 2640



lightgrey 2720



stone 2740



khaki 2630



gmelichleder

Ascot		Leder Spezifikation	
Bezeichnung	Einheit	Anforderung	Prüfvorschrift
Lederdicke	mm	1,0 - 1,2	DIN EN ISO 2589 (DIN 53326)
Weiterreißkraft	N/mm	> 20	DIN EN ISO 3377-1 (DIN 53329)
Reibechtheit	Note	> 4	DIN EN ISO 11640
Haftung der Zurichtung	N/10mm	2	ISO 11644 / IUF 470
Lichtechtheit	Stufe Blauskala	5	DIN EN ISO 105 - B02
Knickungen		20.000	DIN EN ISO 5402 (DIN 53351)
Brandtest			DIN EN 1021 Part I + II

Ascot		Leather Specification	
Characteristic	Unit	Requirement	Test method
<i>Thickness</i>	<i>mm</i>	<i>1.0 - 1.2</i>	<i>DIN EN ISO 2589 (DIN 53326)</i>
<i>Tear strength</i>	<i>N/mm</i>	<i>> 20</i>	<i>DIN EN ISO 3377-1 (DIN 53329)</i>
<i>Rubbing strength</i>	<i>Note</i>	<i>> 4</i>	<i>DIN EN ISO 11640</i>
<i>Adhesion of finish</i>	<i>N/10mm</i>	<i>2</i>	<i>ISO 11644 / IUF 470</i>
<i>Light fastness</i>	<i>class blue scale</i>	<i>5</i>	<i>DIN EN ISO 105 - B02</i>
<i>Flexing endurance</i>		<i>20,000</i>	<i>DIN EN ISO 5402 (DIN 53351)</i>
<i>Flame resistance</i>			<i>DIN EN 1021 Part I + II</i>



gmelichleder

Lederfabrik
Gmelich + Söhne GmbH
Kreuzstraße 65, D-71723 Großbottwar
Tel. +49 7148-9615-0, Fax +49 7148-9615-111
e-Mail: info@gmelich.de, www.gmelich.de



gmelichleder

Gmelich + Söhne GmbH

Die Lederproduktion hat in Großbottwar lange Tradition. Im Jahre 1923 gründete der Kaufmann Otto Gmelich mit seinen Söhnen Hugo und Robert die Firma Gmelich + Söhne. Direkt nach der Gründung wurde mit dem Bau der ersten Fabrik begonnen.

Das Produktportfolio wechselte über die Jahre vom Schuhleder in immer stärkerem Maße in den Polstermöbel- und Büro- / Objektbereich. Aber auch Leder für die Bekleidung, Bücher, Trommeln und seit neuestem Leder für die Flugzeugindustrie finden international immer mehr Anklang und Liebhaber.

Heute zählt Gmelich mit rund 115 Mitarbeitern zu den ganz wenigen Gerbereien in Europa, die eine vollstufige Lederherstellung betreiben, also von der rohen Haut bis zum fertigen Leder alle Prozesse im eigenen Hause durchführen, und demnach auch den durchgängigen Einfluss auf die Qualität des fertigen Leders haben.

Die Firmenphilosophie, Leder in höchster Qualität umweltfreundlich herzustellen, sowie zielgerichtete Modernisierungen und Investitionen, sorgten dafür, dass Gmelich bei den renommiertesten Lederverarbeitern der Welt als Topadresse für Leder gilt.

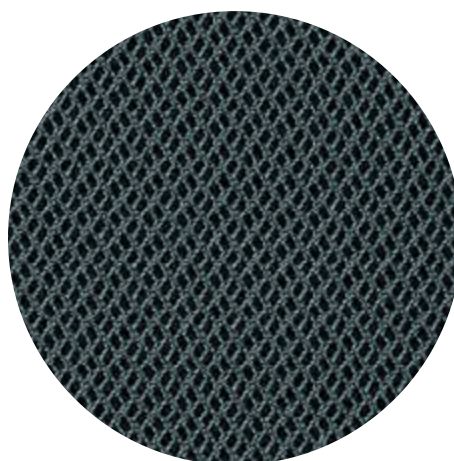
Gmelich + Söhne GmbH

Leather production in Großbottwar follows a long tradition. In 1923 the businessman Otto Gmelich and his sons Hugo and Robert founded the company Gmelich + Söhne, and directly afterwards began building their first factory.

Over the years their product range gradually changed from the production of shoe leather to a steady increase in the production of leather for the upholstery seating and for the office and contract markets. Leather for clothing, books, drums and more recently the aeroplane industry has also gained an international reputation and critical acclaim over the years.

Today Gmelich, with approximately 115 employees, is one of the few tanneries remaining in Europe to oversee the full production; each stage, from treating the raw hide to the production of the finished leather, is carried out in house, enabling the company to keep full control over the quality of the finished product.

The company philosophy, involving the production of high quality leather to environmental standards, along with targeted modernisation and investment, has ensured Gmelich a reputation as a first class source of leather amongst some of the most renowned leather users in the world.



RHYTHM™

by Gabriel

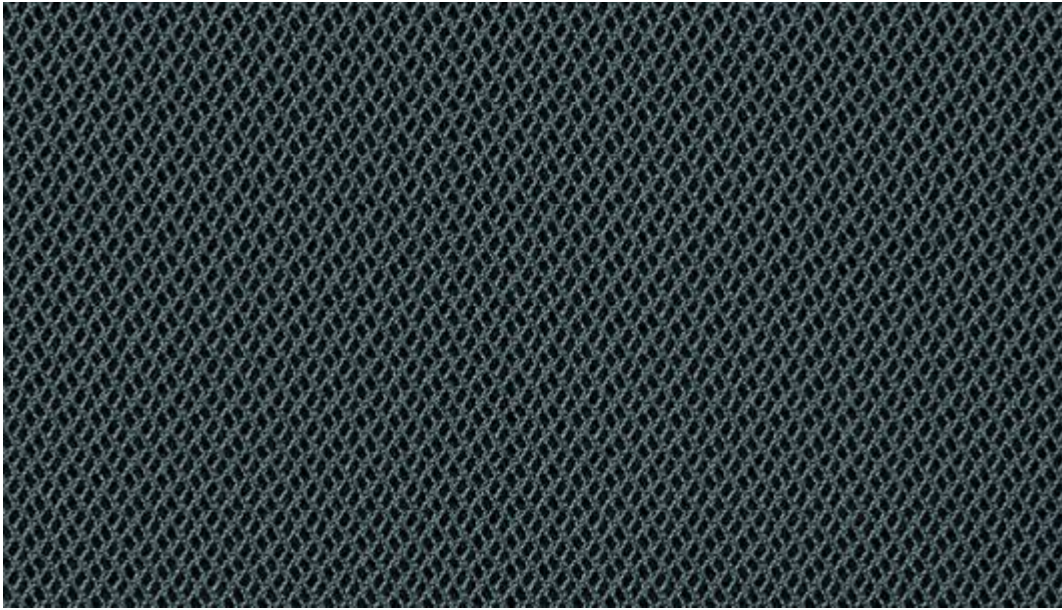
Standard Collection profim

Rhythm

Rhythm 60165	Rhythm 66152
Rhythm 60176	Rhythm 68121
Rhythm 60999	
Rhythm 63067	

Extended Collection

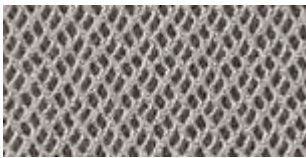
Wszystkie kolory poza standardowymi dostępne są z terminem realizacji 6-8 tygodni. Szczegóły wyceny dostępne są u właściwego RDS (Regionalnego Dyrektora Sprzedaży).



68122



60000



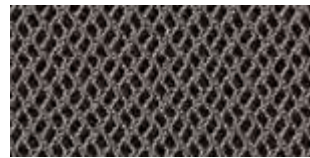
60165



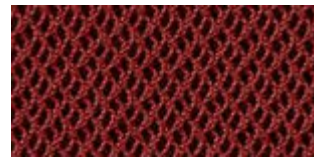
63067



60025



60176



63068



60999



64089



66151



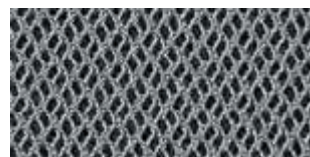
68121



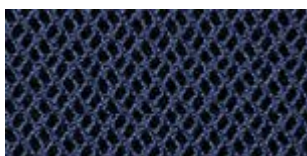
68123



66152



68120



66138



68122

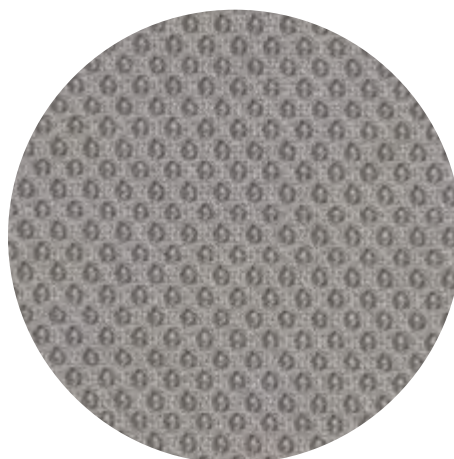


68124

RHYTHM™

Rhythm specifications: www.gabriel.dk

Please be aware that the PDF colour shades can appear different from the real fabric colours.
We advise you to request actual fabric samples before ordering.



RUNNER™

by Gabriel

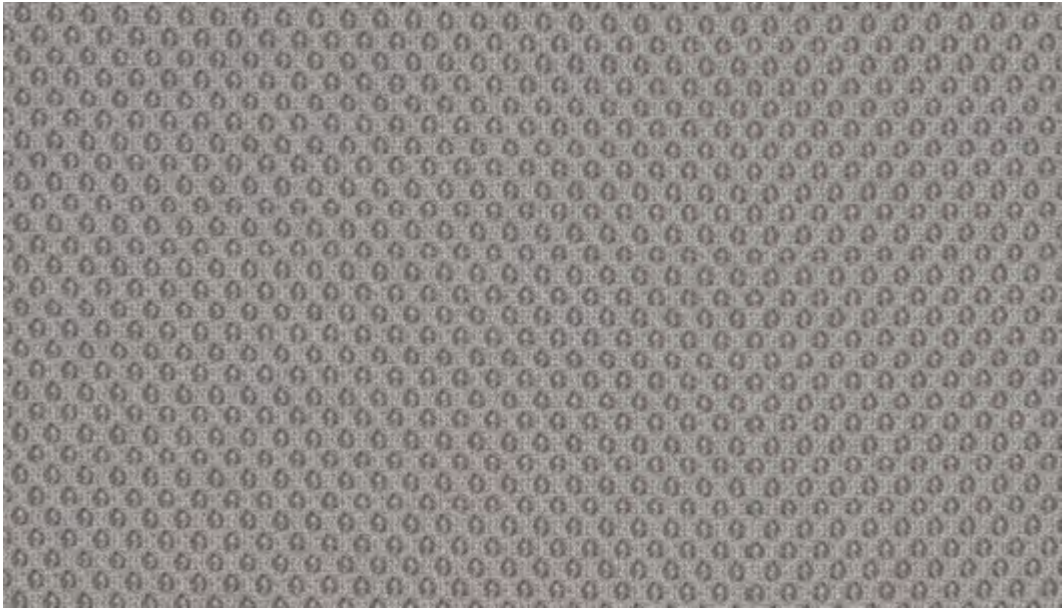
Standard Collection profim

Runner

Runner 60011
Runner 60061
Runner 60999

Extended Collection

Wszystkie kolory poza standardowymi dostępne są z terminem realizacji 6-8 tygodni. Szczegóły wyceny dostępne są u właściwego RDS (Regionalnego Dyrektora Sprzedaży).



60165



60061



61128



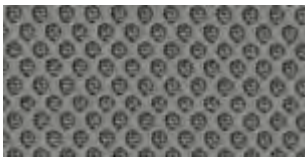
60165



61110



63034



60011



62064



64119



60025



64089



60999



61129



61130



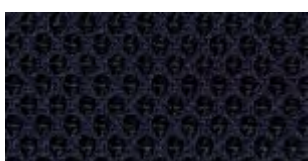
65078



66140



66123



66064



66063



66120



68137



68108



68056



68109

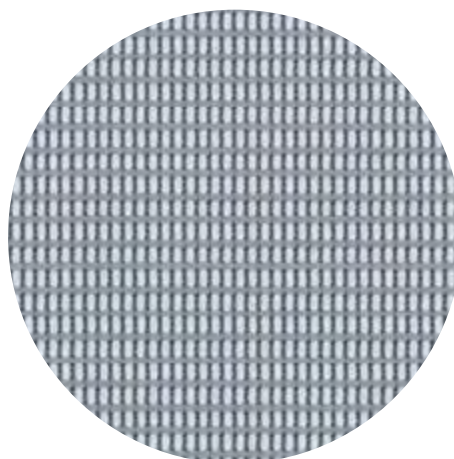


68110

RUNNER™

Runner specifications: www.gabriel.dk

Please be aware that the PDF colour shades can appear different from the real fabric colours.
We advise you to request actual fabric samples before ordering.



STRING™

by Gabriel

Standard
Collection

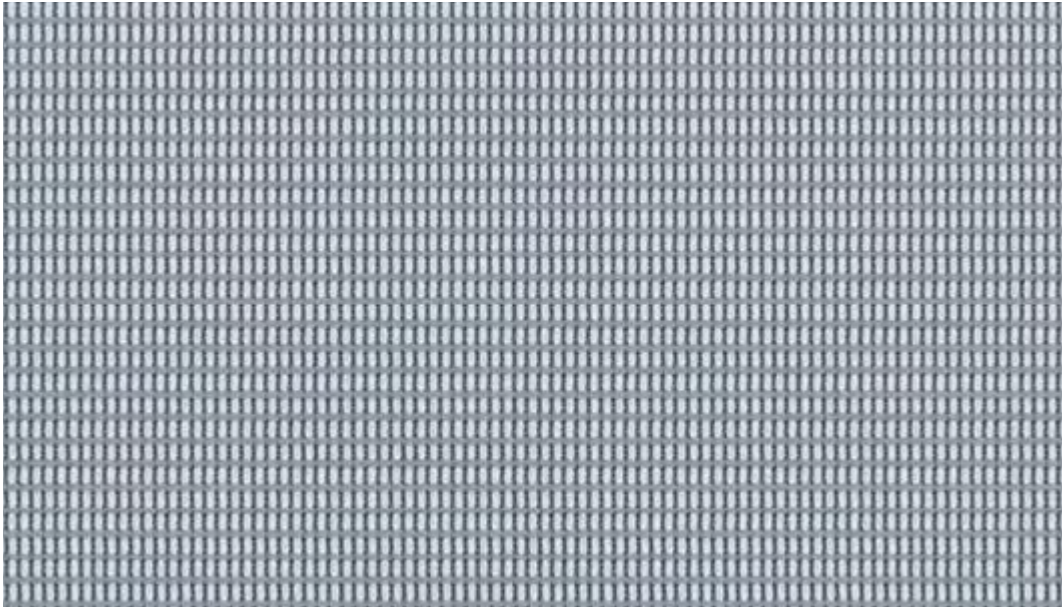
profim

String

String 60118
String 60999

Extended
Collection

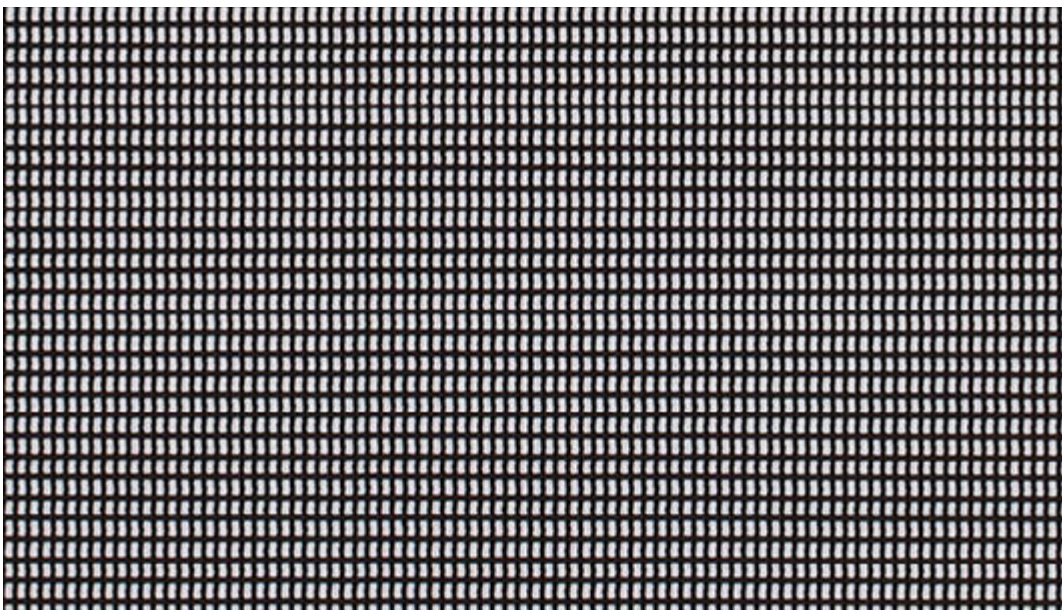
Wszystkie kolory poza standardowymi dostępne są z terminem realizacji 6-8 tygodni. Szczegóły wyceny dostępne są u właściwego RDS (Regionalnego Dyrektora Sprzedaży).



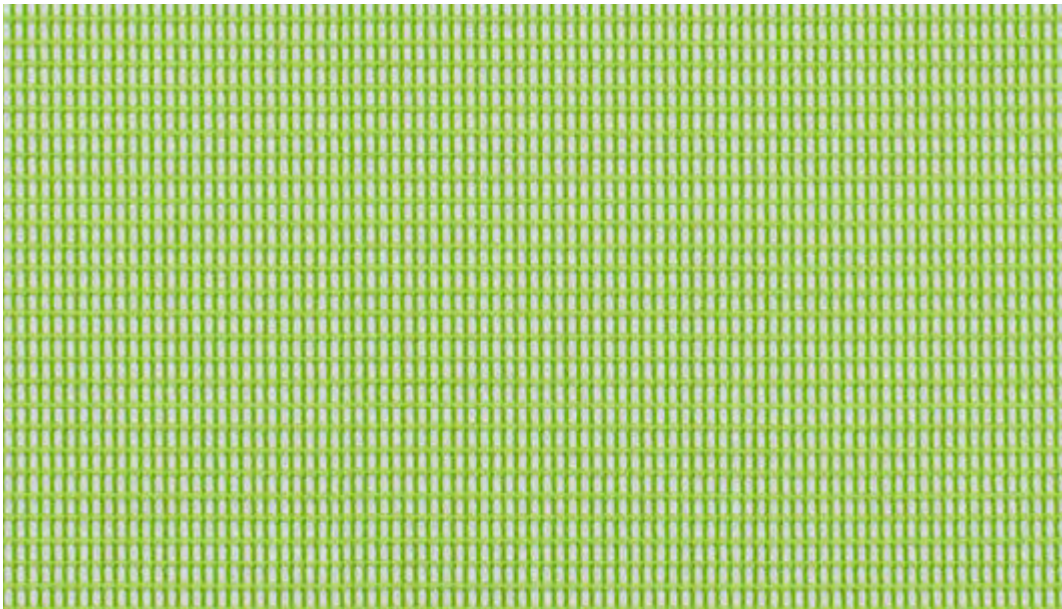
60119



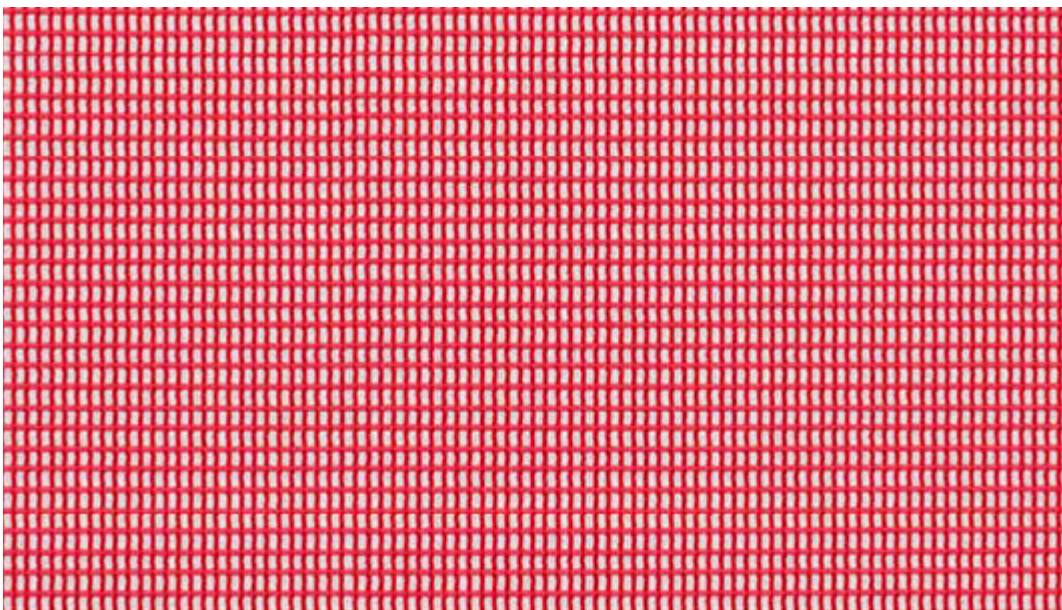
60118



60999



68092



64079

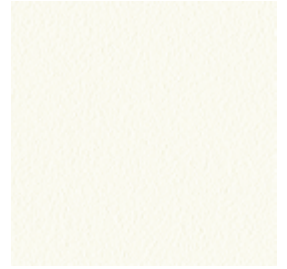
STRING™

String specifications: www.gabriel.dk

Please be aware that the PDF colour shades can appear different from the real fabric colours.
We advise you to request actual fabric samples before ordering.

Wykończenia Finishes Oberflächen

Acos^{Pro}, Arca, Ariz, Bit, Com*, Chic, Chic Lounge, Chic Stoliki/Tables/Tische, Ellie^{Pro}, Fan, Mickey, Normo, Nu, Revo Stoliki/Tables/Tische, Stoliki/Tables/Tische: SV, SH, SR, Seven, Softbox, Sorriso, Sun, Vancouver Lite, Xenon, Xenon Net, Zoo*



White
RAL 9016

Acos^{Pro}, Arca, Ariz, Bit, Com*, Chic, Chic Air, Chic Lounge, Chic Stoliki/Tables/Tische, Ellie^{Pro}, Fan, Mickey, Normo, Nu, Revo Stoliki/Tables/Tische, Stoliki/Tables/Tische: SV, SH, SR, Seven, Softbox, Sorriso, Sun, Zoo*, MyTurn Sofa, MyTurn Sofa Stoliki/Tables/Tische, October Stoliki/Tables/Tische, SoftBox, Vancouver Lite, Wall In, Xenon, Xenon Net



Black
RAL 9005

Acos^{Pro}, Ariz, Bit, Chic, Chic Lounge, Chic Stoliki/Tables/Tische, Com*, Ellie^{Pro}, Fan, Mickey, Normo, Nu, Softbox, Sorriso, Revo Stoliki/Tables/Tische, Seven, Stoliki/Tables/Tische: SV, SH, SR, Sun, Vancouver Lite, Xenon, Xenon Net, Zoo*

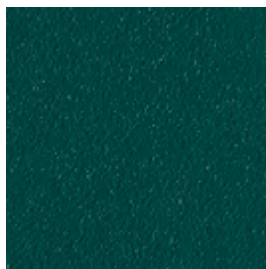


Light Grey
NCS S 2500-N

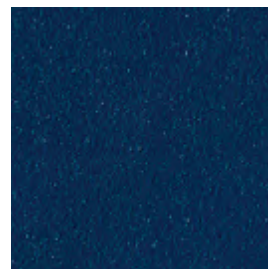


Grey
NCS S 6500-N

Acos^{Pro}, Ariz, Bit, Chic, Chic Lounge, Chic Stoliki/Tables/Tische, Com*, Ellie^{Pro}, Fan, Mickey, Normo, Nu, Revo Stoliki/Tables/Tische, Seven, Softbox, Sorriso, Stoliki/Tables/Tische: SV, SH, SR, Sun, Vancouver Lite, Zoo, Xenon, Xenon Net



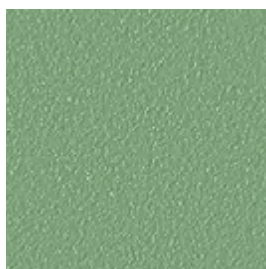
Deep Green
RAL 6004



Navy Blue
RAL 5003



Burgundy
RAL 3005



Salvia/Green
RAL 6021



Blue
RAL 5014



Terracotta
RAL 3012

*Kolory stelaży w poszczególnych konfiguracjach do potwierdzenia w cenniku / Available colours of the frames to be confirmed with the price list / Die verfügbaren Gestellfarben entnehmen Sie bitte der Preisliste

Kolory wykończeń w druku mogą różnić się od rzeczywistych / Finishings colours in print may be different from actual colours / Die dargestellten Farben können aus drucktechnischen Gründen von den realen Farben abweichen

Acos^{Pro}, Arca, Ariz, Bit, Chic,
Chic Air, Chic Lounge, Chic
Stoliki/Tables/Tische, Com,
Ellie^{Pro}, Fan, MyTurn Sofa,
MyTurn Sofa Stoliki/Tables/
Tische, Normo, Nu, October,
October Stoliki/Tables/Tische,
Revo Stoliki/Tables/Tische,
Seven, Softbox, Sorriso, Sun,
Stoliki/Tables/Tische: SV, SH,
SR, Vancouver Lite, Wall In,
Xenon, Xenon Net, Zoo



MetallikPro

Chic*, Chic Lounge, Chic
Stoliki/Tables/Tische*, Com,
Ellie^{Pro}, Fan*, Nu



Gold

Acos^{Pro}, Arca, Ariz, Bit, Chic,
Chic Air, Chic Lounge, Chic
Stoliki/Tables/Tische, Com*,
Fan, MyTurn, MyTurn Sofa,
MyTurn Sofa Stoliki/Tables/
Tische, Nu, October, October
Stoliki/Tables/Tische, Sorriso,
Sun, Stoliki/Tables/Tische: SV,
SH, SR, Vancouver Lite, Wall In,
Xenon, Xenon Net, Zoo*



Chrome

Ellie^{Pro}*



Metalsilver

*Kolory stelaży w poszczególnych konfiguracjach do potwierdzenia w cenniku / Available colours of the frames to be confirmed with the price list / Die verfügbaren Gestellfarben entnehmen Sie bitte der Preisliste

Kolory wykończeń w druku mogą różnić się od rzeczywistych / Finishings colours in print may be different from actual colours / Die dargestellten Farben können aus drucktechnischen Gründen von den realen Farben abweichen

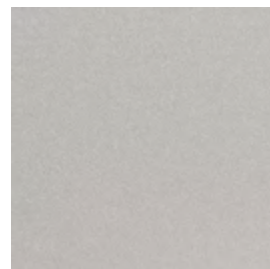
Elementy aluminiowe / Aluminium elements / Alu-Elemente

Accis^{Pro}, Action, Arca, Ellie^{Pro},
Fan, LightUp, Motto, MyTurn,
Nu, Pace, Playa, Raya, Softbox,
Softbox Stoliki/Tables/Tische,
Stoliki/Tables/Tische SF,
Trillo^{Pro}, Violle, Veris Net, Xenon,
Xenon Net



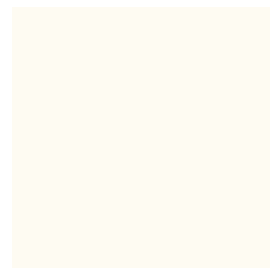
Polished

Arca, Ellie^{Pro}, Nu, Fan, Playa,
Raya, Trillo^{Pro}, Veris Net



MetalikPro

Ellie^{Pro}, Trillo^{Pro}, Nu, Accis^{Pro},
Viole



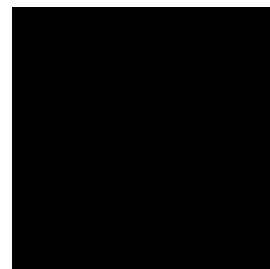
White
RAL 9016

Ellie^{Pro}, Trillo^{Pro}, Nu, Accis^{Pro}



Graphite

Action, Ellie^{Pro}, Softbox, Softbox
Stoliki/Tables/Tische, Trillo^{Pro},
Nu

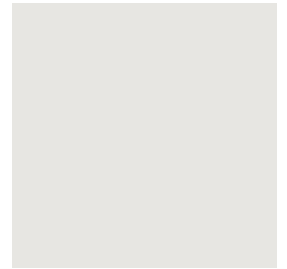


Black
RAL 9005

*Kolory stelaży w poszczególnych konfiguracjach do potwierdzenia w cenniku / Available colours of the frames to be confirmed with the price list / Die verfügbaren Gestellfarben entnehmen Sie bitte der Preisliste

Kolory wykończeń w druku mogą różnić się od rzeczywistych / Finishings colours in print may be different from actual colours / Die dargestellten Farben können aus drucktechnischen Gründen von den realen Farben abweichen

Accis^{Pro}, Ellie^{Pro}, LightUp,
Mickey, Pace, Trillo^{Pro}, Violle



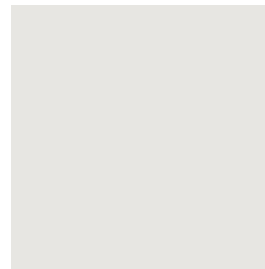
Light Grey
RAL 7047

Mickey

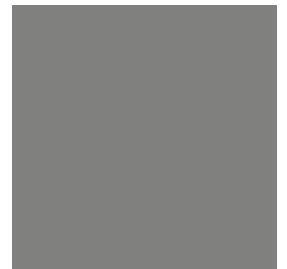


Beige
RAL 7036

Zoo



Light Grey
NCS S 2500-N



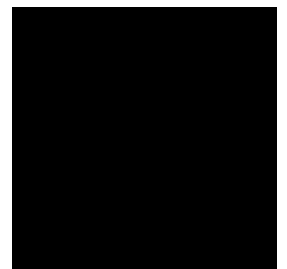
Grey
NCS S 6500-N

Mickey, Trillo^{Pro}



Grey
RAL 7043

Accis^{Pro}, Ellie^{Pro}, Pace, Trillo^{Pro}*,
LightUp, Violle, Zoo

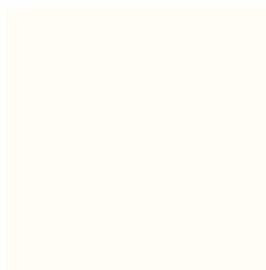


Black
RAL 9005

*Kolory stelaży w poszczególnych konfiguracjach do potwierdzenia w cenniku / Available colours of the frames to be confirmed with the price list / Die verfügbaren Gestellfarben entnehmen Sie bitte der Preisliste

Kolory wykończeń w druku mogą różnić się od rzeczywistych / Finishings colours in print may be different from actual colours / Die dargestellten Farben können aus drucktechnischen Gründen von den realen Farben abweichen

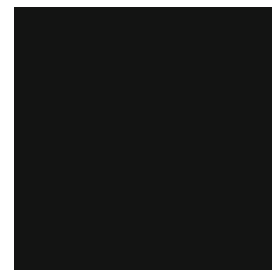
Ariz



White
CODE 20



Ashen (tworzywo z recyklingu/
from recycling content) CODE 517



Black
CODE 01



Olive Green
CODE 513



Gray Blue
CODE 503



Navy
CODE 516

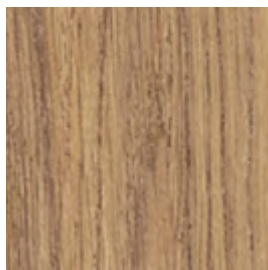


Red
CODE 3020

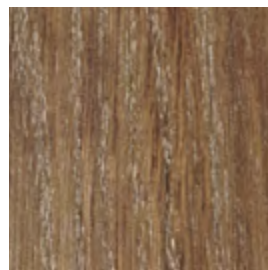
*Kolory stelaży w poszczególnych konfiguracjach do potwierdzenia w cenniku / Available colours of the frames to be confirmed with the price list / Die verfügbaren Gestellfarben entnehmen Sie bitte der Preisliste

Kolory wykończeń w druku mogą różnić się od rzeczywistych / Finishings colours in print may be different from actual colours / Die dargestellten Farben können aus drucktechnischen Gründen von den realen Farben abweichen

Drewno (dąb) / Wood (oak) / Holz (Eiche)



H06



H012

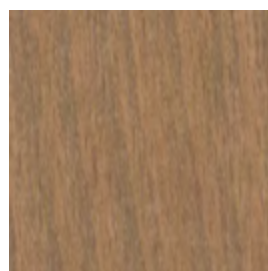


H011

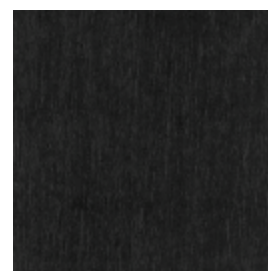
Drewno (buk) / Wood (beech) / Holz (Buche)



H6 (matching NB)



H12



H5

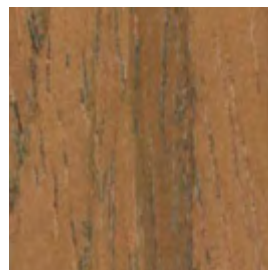
Okleiny naturalne modyfikowane /
Natural modified veneers / Modifizierte Edelfurniere



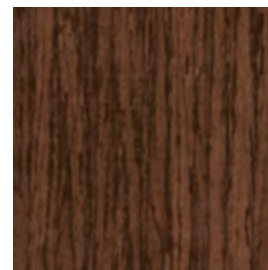
HM10



HM11

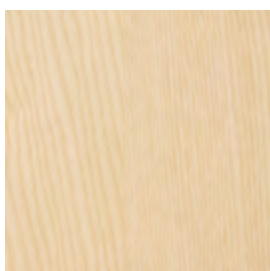


HM12

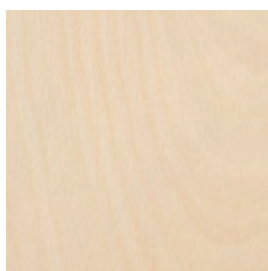


HM20

Okleiny naturalne / Natural veneers / Edelfurnier



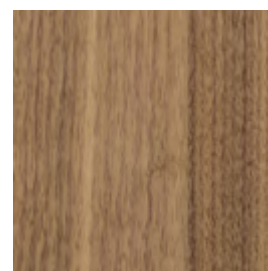
Ash
NA



Beech
NB (matching H6)

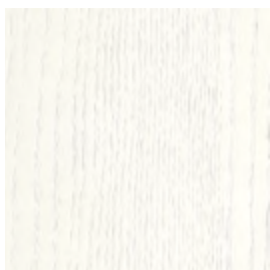


Oak
NO

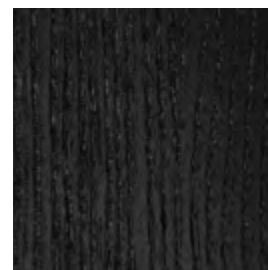


Walnut
NW

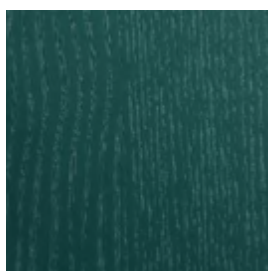
Okleiny naturalne kolorowe /
Coloured natural veneers / Edelfurniere-Farben



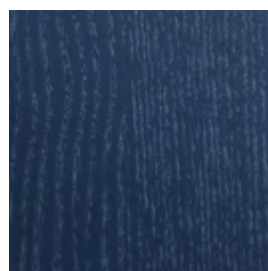
White Ash
CNA01



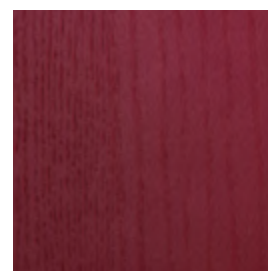
Black Ash
CNA02



Deep Green Ash
CNA05, RAL 6004



Navy Blue Ash
CNA06, RAL 5003



Burgundy Ash
CNA07, RAL 3005

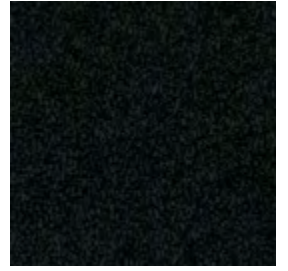
MyTurn Sofa Stoliki/Tables/
Tische, SoftBox



White
LW01, RAL 9016



Grey
LW04, RAL 7037

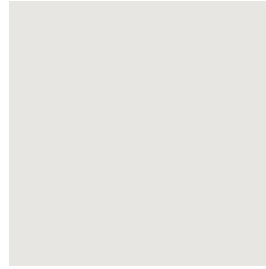


Black
LW02, RAL 9011

Com, Revo Stoliki/Tables/
Tische, Stoliki/Tables/Tische
SH/SR, Wall In



White
LW01, RAL 9016



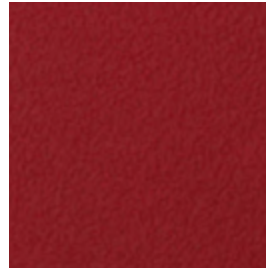
Light Grey
LW03 NCS 2500-N



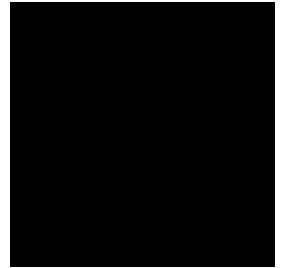
Grey
LW04, RAL 7037



Navy Blue
LW06, RAL 5003



Light Burgundy
LW07, RAL 3004



Black
LW02, RAL 9011



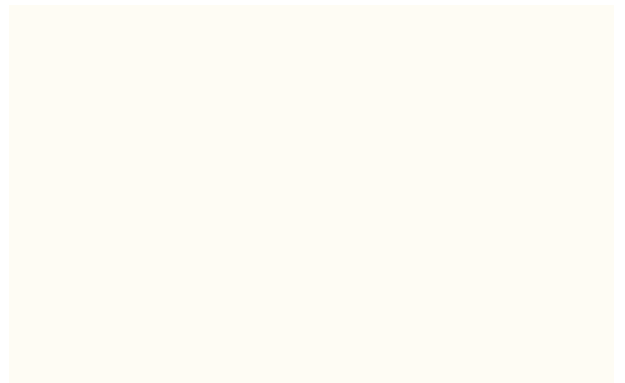
Black
G2



Graphite
G4, RAL 7042



Beige
G3, RAL 7044



White
G1

Colours of chairs and tables 2024

Ana
Noor

Allround
u-Connect
Eminent
Standard
Folding table

Kolory kubeków / Shell colours / Schalenfarbe

Legenda / Legend / Legende:

- Standardowy czas realizacji / Standard delivery time / Standardlieferzeit
- Wydłużony czas realizacji / Extended delivery time / Verlängerte Lieferzeit

	Plastics																	Veneer shell	
	Poppy	Vanilla	Straw	Rose	Coral	Sky	Sea Green	Teal Blue	Forest	Misty Grey	Clay	Graphite	Graphite – recycled PP	Charcoal	Oak	Dark stained Oak			
Ana	●	●					○	●		●			●	●					
Noor 6050/6055	○	●	○	○	○	○	●	●	○	●	●	●			●	○			
Noor 6060/6065	○	●	○	○	○	○	●	●	○	●	●	●			●	○			
Noor 6070/6075	○	●	○	○	○	○	●	●	○	●	●	●			●	○			
Noor 6080/6085	○	●	○	○	○	○	●	●	○	●	●	●			●	○			
Noor Up 6090/6095	○	●	○	○	○	○	●	●	○	●	●	●			●	○			

Kolory stelaży / Frame colours / Gestellfarbe

Legenda / Legend / Legende:

- Standardowy czas realizacji / Standard delivery time / Standardlieferzeit
- Wydłużony czas realizacji / Extended delivery time / Verlängerte Lieferzeit

	Frames											Aluminium elements		Wood (Ash)			Aluminium elements for base 6080/6085	
	Lingon RAL 3000	Snow (White) RAL 9016	Canola	Rose	Aqua	Sea Green	Teal Blue	Forest	Misty Grey	Black RAL 9005	Metalsilver	Steelgrey	Polished Alu	White stained Ash	Stained Ash	Dark stained Ash	Black painted Aluminium frame	Polished Aluminium frame
Ana	○	●				○	●		●	●	●	●						
Noor 6050/6055	○	○		○		●	●	○	○	●	●	●						
Noor 6060/6065	○	●	○	○	○	●	●	○	○	●	●	●						
Noor 6070/6075		○							●				○					
Noor 6080/6085														○	●	○	●	○
Noor Up 6090/6095	○	●	○	○	○	●	●	○	○	●	●	●						

Kolory blatów / Table tops colours / Plattefarbe

Legenda / Legend / Legende:

- Standardowy czas realizacji / Standard delivery time / Standardlieferzeit
- Wydłużony czas realizacji / Extended delivery time / Verlängerte Lieferzeit

	HPL													Linoleum			
	Polar White Mat Formica F2255	Folkstone Formica F7927	Sarum Grey Formica F2770	Diamond Black Formica F2253	Oak natural Formica F1079	Birch Formica F7921	Pale Ash Nat Formica F1004	Elegant Oak Nat Formica F5374	Refined Walnut Nat Formica F5872	Dark Ash Nat Formica F8575	Kashmir Mat Formica F0187	Oyster Grey Mat Formica F7929	Pumice Mat Formica F7858	Olive Forbo Desktop 4184	Smokey Blue Forbo Desktop 4179	Burgundy Forbo Desktop 4154	Iron Forbo Desktop 4178
Allround	●	●	○	○	○	○	○	○	○	○	○	○	○	○	○	○	○
u-Connect	●	●	○	○	○	○	○	○	○	○	○	○	○	○	○	○	○
Eminent	●	●	○	○	○	○	○	○	○	○	○	○	○	○	○	○	○
Standard Folding table	●	●	○	○	○	○	○	○	○	○	○	○	○				

Kolory stelaży / Frame colours / Gestellfarbe

Legenda / Legend / Legende:

- Standardowy czas realizacji / Standard delivery time / Standardlieferzeit
- Wydłużony czas realizacji / Extended delivery time / Verlängerte Lieferzeit

	Snow RAL 9016	Misty Grey	Metalsilver	Steelgrey	Black RAL 9005/RAL9011	Polished aluminium
Allround	●		●	●	●	
u-Connect	●	●		●	●	○
Eminent	●		●	●	●	
Standard Folding table			●	●	●	

Rozmiary blatów / Table top sizes / Plattenmaßen

Legenda / Legend / Legende:

- Standardowy czas realizacji / Standard delivery time / Standardlieferzeit
- Wydłużony czas realizacji / Extended delivery time / Verlängerte Lieferzeit
- Standard / Extended

cm	ø60	ø70	ø80	ø100	ø120	ø160	1/2 circle ø160	Ellipse 180 x 100	Trapezium 140x70x70x70, depth 60	80 x 80	90 x 60	120 x 45	120 x 60	120 x 70	120 x 80	120 x 90	140 x 60	140 x 70	140 x 80	160 x 70	160 x 80	180 x 70	180 x 80	180 x 90	
Allround	○	●	○	○	○			○		○				●	●			●	●			○	○	●	○
u-Connect													●	●	●			●	●	●	●	●	●	●	●
Eminent					○	○			○	○			●		●		○	●	●			●		●	
Standard Folding table							○				●	●	●	●	●	●	●	●	●	●	●	○	●	○	○