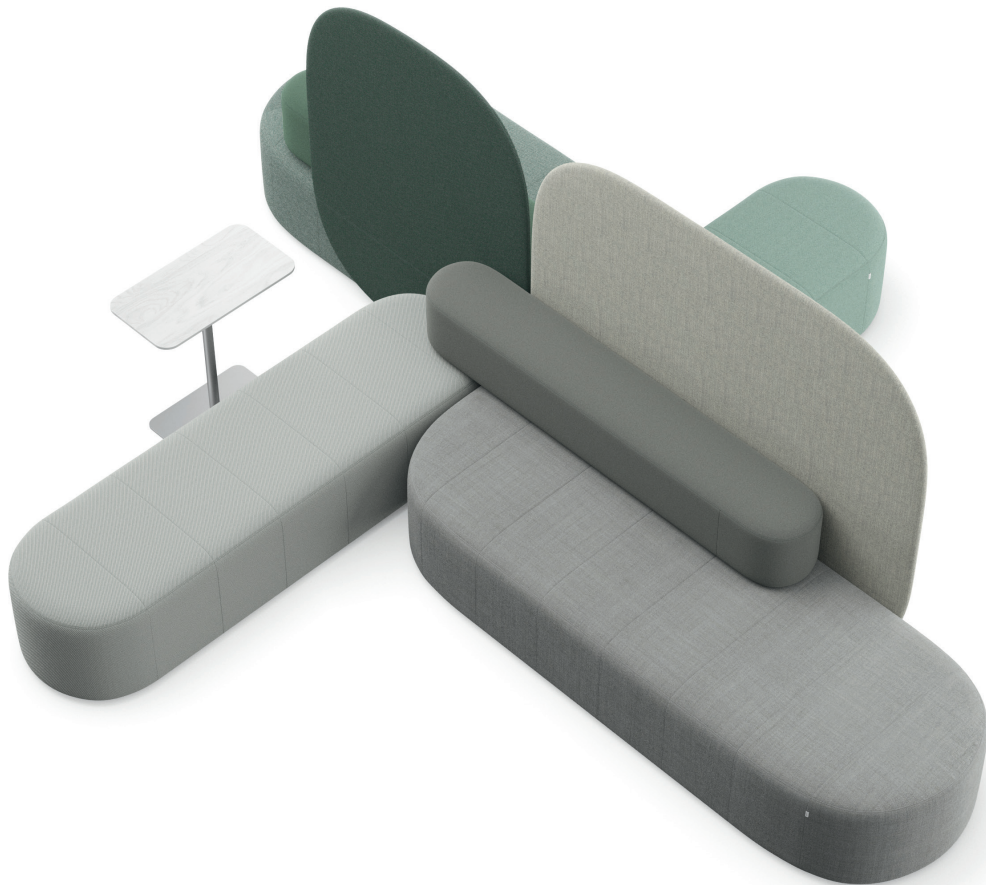


Revo Product Factsheet



Pearson Lloyd Design

For more than 30 years, we've been creating friendly work environments – no matter how, where, or with whom you work.

Our refined, technologically advanced, ergonomic seats support people in their daily work.

With our large-scale production, we feel a responsibility for the global ecosystem.

In mass production, every small change is multiplied by thousands of products, which is why we are changing old habits and adapting new norms of circular economy.

– We're radically reducing the use of primary raw materials by replacing them with those recovered from waste. In addition, we're reducing our own production waste.

– We design durable products which last for years and construct them in such a way as to ensure easy recycling.

Step by step, we're closing the cycle of circular production. We are committed to making our sustainable solutions affordable, so that they can reach many users.



Revo collection

REVO. Endlessly configurable, infinitely recyclable.

Designed by Pearson Lloyd, Revo represents a radical rethinking of the way office furniture is made. Responding to the changing way we work and the urgent need for action on climate, our new modular seating collection sets new standards in both sustainability and versatility.

The Revo family includes sofas, benches, screens, pouffes and tables in softly contoured, organic shapes. By arranging these elements in different ways, Revo can be configured to suit every workspace, whatever its function or size.

Features:

- Circular product – design for easy disassembly. All Revo components can be easily separated into their component materials, and returned to the manufacturing cycle
- Created from recyclable REPP (recycled expanded polypropylene) instead of wood
- Manufactured without glue or staples
- Product weight reduced by 40%
- Each piece in the collection is lightweight and easily manoeuvrable
- Every stage of production – manufacture to shipping – is energy- and carbon-conscious
- The Revo collection range: 2 pouffes, 2 narrow sofas, 3 wide sofas, 3 backrests, 3 screens, 2 laptop tables, 2 coffee tables, 3 conference tables
- Available in 96 distinct modular configurations.

Quality

Profim provides a 5-year warranty for products used 8 hours a day, 5 days a week (single shift operation).

Certificates



www.blauer-engel.de/uz117

Technical data

Seat elements / pouffes:

- Construction: top is made of REPP* material (recycled expanded polypropylene) with moulded foam, fully upholstered. Bottom of the seat made of plywood.
- Foam density 70 kg/m³.
- Seat can be equipped with mediaport - option.

Backrest elements:

- Construction: REPP* material (recycled expanded polypropylene) with moulded foam, equipped with metal elements enabling mounting it to the seats.
- Foam density 65 kg/m³.

Partition wall

- Construction: plywood + HDF board + cardboard honeycomb. Fully upholstered with fabric.
- Partition walls can not appear as a free standing elements.

Glides:

- Teflon - universal (standard).

* Recycled expanded polypropylene (REPP) is a highly versatile closed-cell bead foam that provides a unique range of properties, including outstanding energy absorption, multiple impact resistance, thermal insulation, buoyancy, water and chemical resistance, exceptionally high strength to weight ratio and 100% recyclability.

Product versions

Pouffes



P40



P60



SW120



SW180



SW240

Seats narrow



SN150



SN210



B90



B120



B180

Backrests

Partition Walls



W90



W120



W180



SSW1



SSW4



SSW6



SSW2



SSW5



SSW7

Main Settings Typologies *



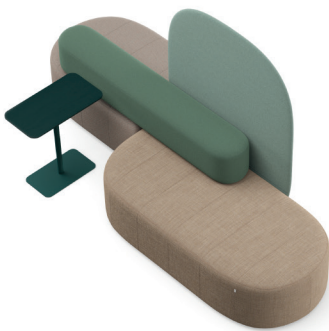
Single Seater

Configuration code SSW-2
(W: 1200mm / D: 900 / H: 1500mm)



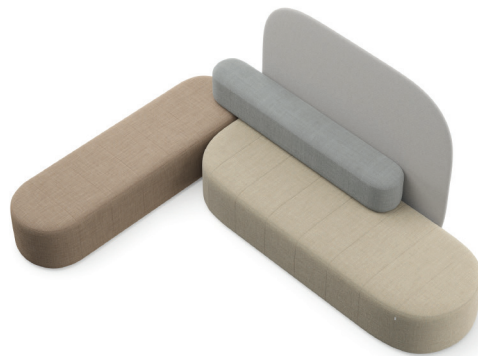
Face-to-Face

Coffee/Task - 2 to 4 people
Two sofas SW180 (W: 1800 mm / D: 850 mm) and Cofee Table C150



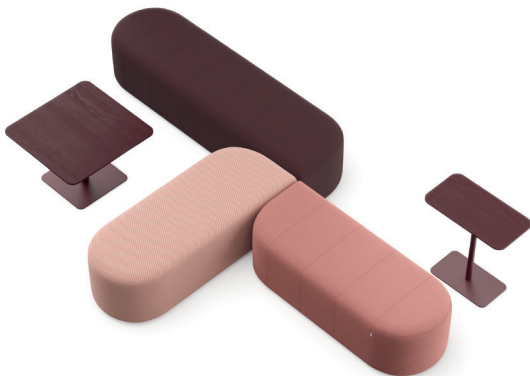
Linear

Perpendicular Shearing.
Configuration code LS-3 (W: 3000 mm / D: 1450 mm)



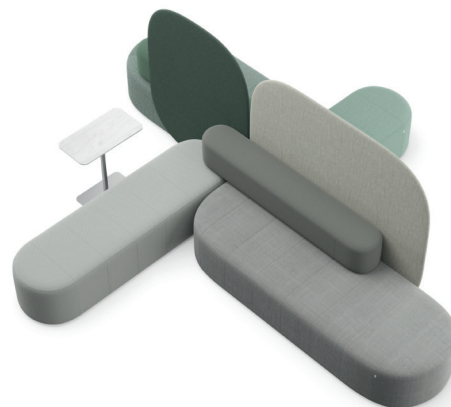
L Condition

Configuration code LC-7 (W: 2100 mm / D: 3050 mm)



T Condition

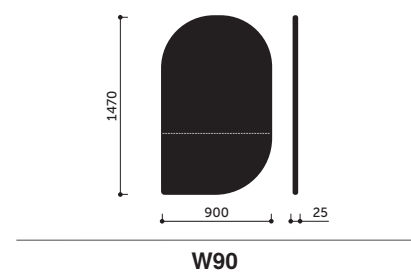
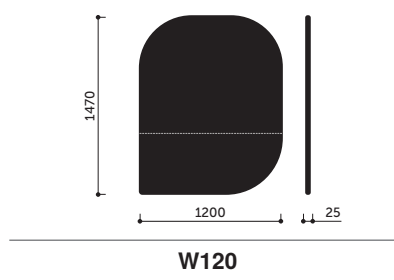
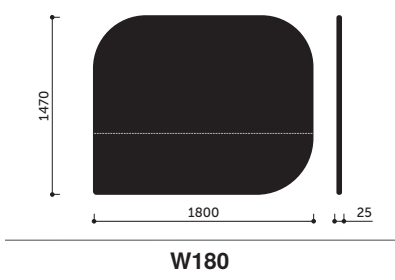
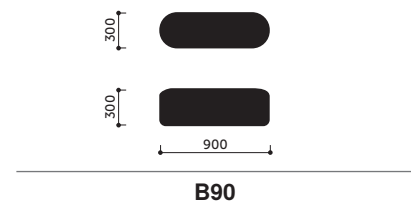
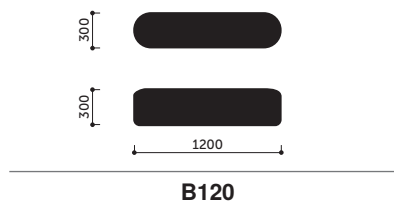
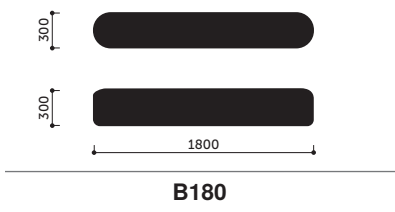
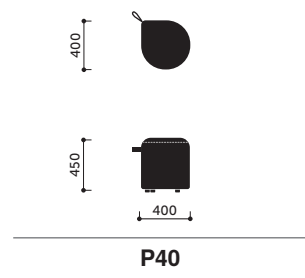
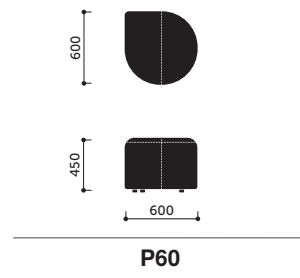
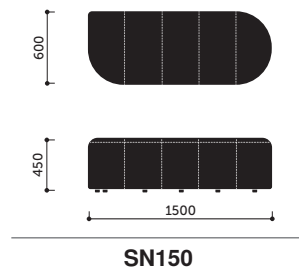
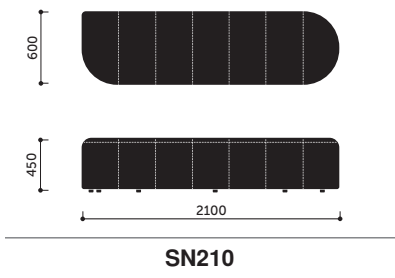
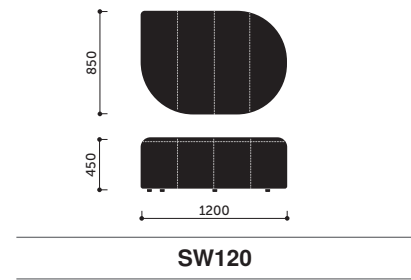
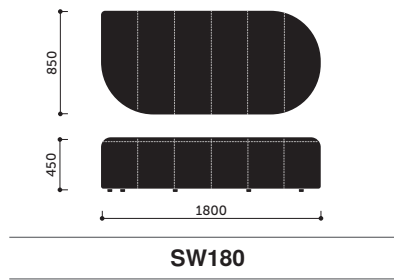
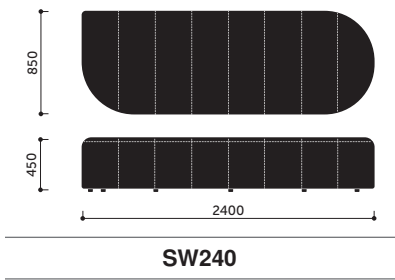
Narrow + Narrow
Configuration code TC-2 (W: 3600 mm / D: 2150 mm)



X Condition

Wide + Narrow Combinations
Configuration code XC-11 (W: 3600 mm / D: 3600 mm)

Dimensions



Office

Flokk A/S
Sorgenfrivej 18
2800 Kongens Lyngby