

# giroflex 313

The chair to share



## The chair to share

The giroflex 313 represents the essence of the Giroflex brand, crafted to meet the demands of today's dynamic workplace. It's an eye-catching chair that seamlessly blends healthy sitting with unmatched versatility.

Staying true to the Giroflex principle "designed to work," the giroflex 313 is both a functional tool and a statement of elegance. It's a natural team player, requiring only seat height adjustment—everything else is handled automatically by the energising synchro mechanism. The double-zoned seating profile ensures comfort during extended use.

Built for quality and longevity, the giroflex 313 stands out in any room with its high-grade materials and customisable configurations. The deep backrest profile ensures it's always noticeable but never overpowering.

**New for 2024/25:  
Giroflex X Gabriel collaboration**

Introducing new colours of the durable and airy Runner spacer mesh, available from October 2024. Additional updates to the textile collection will arrive in early 2025, curated for modern spaces and seamless integration with other Flokk designs.

Explore more on **Pages 14-18** or *visit our website* to discover the full collection.







## Synchro Motion

Designed to work -  
with natural movement

The giroflex 313 is designed to move with you, offering seamless comfort and support throughout your workday. When you lean back, the synchro motion mechanism automatically tilts the seat one degree for every two degrees the backrest reclines, promoting natural movement and encouraging proper posture.

This design allows you to stretch your chest and torso comfortably, improving blood flow and reducing pressure on your legs and thighs.

### The perfect synchro chair to share

The giroflex 313 is built for shared use, providing immediate comfort with minimal adjustments. The synchro motion mechanism adapts to each user's body weight, requiring only manual seat height adjustment—the chair takes care of the rest.

*Read more about  
synchro motion*



[▶ Watch the video](#)

# giroflex 313

Designed to work –  
for every environment

The giroflex 313 is the ultimate all-rounder, designed to seamlessly fit into any office, conference room, or home workspace. Perfectly suited for New Work environments, this chair adapts automatically to each user, offering tailored comfort in any setting.

Available in two basic models—Standard and Conference—the giroflex 313 offers the flexibility of either a mesh or upholstered backrest, catering to different preferences and environments.

Its advanced synchro motion mechanism adjusts to the unique contours of your back, aligning the seat and backrest with your body weight to ensure a naturally comfortable sitting position. The result is immediate comfort and support, regardless of who's using it. For a personalised touch, the sitting height and backrest position can be manually adjusted.

## **Sustainability in every detail**

The giroflex 313 embodies sustainable design, focusing on what's essential. Crafted from just four components, its minimalist design not only makes the chair lighter, more intuitive, and elegant, but also more sustainable. Many materials used in the giroflex 313 are also recyclable, ensuring they can be reused without losing quality at the end of the chair's life cycle.

***Configure your customised giroflex 313 here.***



# Product family



giroflex 313-4039  
Mesh back



giroflex 313-4539  
Upholstered back



giroflex 313-4018  
Conference chair  
Mesh back



giroflex 313-4518  
Conference chair  
Upholstered back

# giroflex 313

Designed to work –  
Inspired by the sphere

## Certifications:

- EPD
- GREENGUARD Gold
- GS-Certificate  
(EN1335-1/-2 Type B)

## A design for natural movement

The giroflex 313 is inspired by the shape of a sphere, which allows for smooth and natural movement. When you sit in this chair, you're positioned at the centre, where it takes the least effort to move.

This design not only enhances comfort but also adds a touch of elegance and a strong visual presence to any space.

## Design with Swiss roots

The giroflex 313 is the creation of Paolo Fancelli, an acclaimed industrial designer from Biasca in the Swiss canton of Ticino.

With a long-standing collaboration with Giroflex since 1996, Paolo has crafted several iconic chairs, including the best-selling giroflex 64 series. His work on the giroflex 313, recognised with the Red Dot Design Award in 2015 and the German Design Prize in 2017, reflects his dedication to blending functionality with aesthetic excellence.

***Learn more about taking care  
for a longer product life here.***





# giroflex 313

Giroflex X Gabriel –  
A colour collaboration

Working with Gabriel fabrics, we have created an exciting new colour palette for their best selling fabric Runner.

Eight new colours, chosen to reflect the dynamic spirit of the Giroflex brand and seamlessly integrate with the updated Flokk colour palette, offering a cohesive and refreshed look for modern workspaces.

This exciting collaboration brings fresh, energetic colours to our celebrated chair, designed to enhance your office experience with a touch of Swiss precision and style.

## Why Runner

We selected Runner fabric for its advanced 3D knit technology, offering exceptional comfort, durability, and vibrant colour display. Its dynamic yet elegant look complements the giroflex 313's design, while its dimensional stability and moisture diffusion ensure lasting comfort.

Plus, with its EU Ecolabel certification, Runner is a sustainable choice that aligns with our commitment to quality and environmental responsibility.

**Four of the eight new colours will be available in October 2024, with the remaining four launching in Q1 2025.**



# Terracotta

A touch of red clay, leaves of autumn and the running tracks passing in a glimpse in your memory. With its earthy feel, this orange-red shade evokes a sense of confidence and strength.

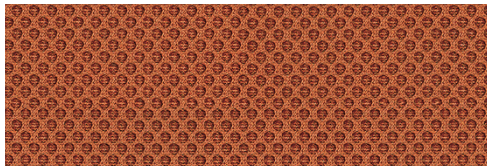
Terracotta has a certain duality—vibrant and bright in character, yet warm with its rich, saturated tone—making it versatile when paired with both lighter and darker colours. It complements natural materials beautifully, especially wood and other organic surfaces.

Runner in Terracotta on a Giroflex chair brings warmth and boldness, helping the chair stand out with integrity. Its colour combinations are countless, working well with brighter hues like blues, greens, reds, and pinks, or more earthy tones like browns and burgundies.

“Terracotta” leaves a joyful impression in any environment!

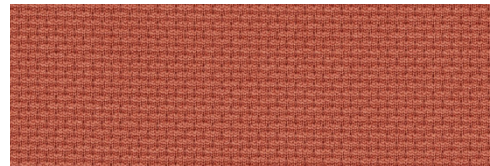


Back colour



Terracotta RUN63125  
Gabriel Runner

Seat colour



LNS63125  
Gabriel Lense

# Chestnut

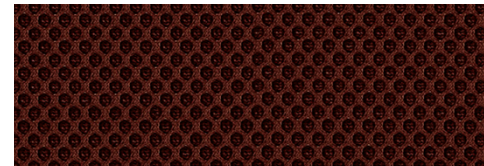
This dark toned red brownish colour is affiliated with a combo of darker reds and browns giving it a grounded feel of connection to nature.

It's deep shade has an intensity in its expression adding a sophisticated feel. It is within the burgundy's colour family psychologically known for increasing energy levels.

Runner in Chestnut give the chairs a refined expression, especially in combo with polished metal parts. It works well in combination with other toned down shades as Dusk, but is also easily combined with lighter blues and Terracotta. Its exclusive touch clearly emerges together with shiny surfaces and spaces with changing light. Chestnut brings the feel of togetherness, a vital ingredient for any workplace.

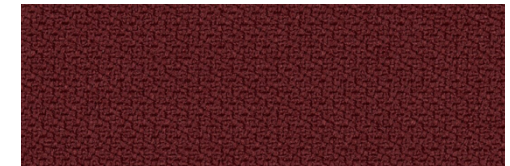


Back colour



Chestnut RUN64159  
Gabriel Runner

Seat colour



SE64159  
Gabriel Step

# Lake

This greyish blue – so called livid colours as it's a medium bluish grey shade, awakes the feel of the sky on a half sunny day mirrored in a resting lake.

It's toned down nuance gives a sense of peace and quiet - it calms the mind and makes you feel well and re-energized just as after a yoga session.

Runner in Lake on a Giroflex chair will have a soothing effect on its surroundings without being boring. It especially mixes well with metals and polished surfaces. It's shade is easy to combine with all kinds of blues and greys. In combo with brighter or contrasting colours it harmonizes well.

Lake expresses elegance and certitude in a trusty way. It's a feel-good colour.

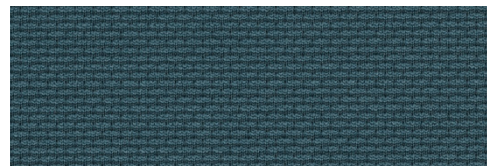


Back colour



Lake RUN66248  
Gabriel Runner

Seat colour



LNS66248  
Gabriel Lense

# Stream

This light blue evokes nature's shifting blues—like the sky, the air, or the flowing water of a river or lake.

It embodies a sense of "lightness of being," conveying freedom and continuity.

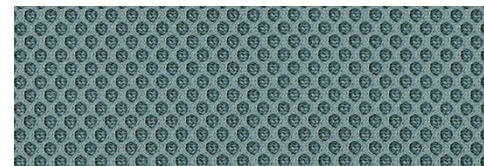
Runner in Stream on a Giroflex chair adds a breath of fresh air to any space, blending beautifully with both warm and dark colours. When paired with materials like wood and concrete, it creates a fresh and delicate atmosphere.

It complements a range of colours, from deep burgundy to various shades of blue and grey.

"Stream" captures both energy and serenity in it's tranquil beauty.



Back colour



Stream RUN67004  
Gabriel Runner

Seat colour



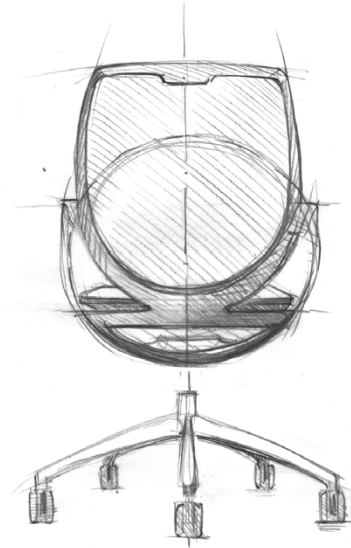
FCM66219  
Gabriel Focus Melange



Photo: Juerg Kaufmann

## giroflex 313

Paolo Fancelli:  
The vision behind  
the giroflex 313



Launched in 2014, the giroflex 313 is the fifth chair designed for Giroflex by renowned Swiss industrial designer Paolo Fancelli. With a multicultural background—Italian heritage, Swiss education, and a German wife—Paolo’s designs uniquely blend simplicity with a touch of global influence.

*“Swiss design is known for its simple, high-quality solutions,” Paolo explains. “My multicultural background adds a unique story to each of my designs.”*

Fancelli

The giroflex 313, winner of the 2015 Red Dot Award and the 2017 German Design Award, epitomises Paolo’s approach, combining elegance and functionality. The design is inspired by the geometry of a sphere, a shape that ensures the chair’s natural, fluid movement while maintaining its form. This concept aligns with Paolo’s belief that a chair should be an extension of the user’s body, not just a piece of office furniture.

The recent update to the giroflex 313, including aluminium armrests, further enhances its spherical design, enveloping the user and elevating the chair to a state-of-the-art piece. By incorporating recycled materials, the chair’s sustainability is also improved, staying true to Paolo’s philosophy of long-lasting, timeless design.

# Models and measurements

giroflex 313	-4039	-4539	-4018	-4518
Seat height loaded	39-51cm	39-51 cm	45 cm	45 cm
Total height	88-101cm	89-102 cm	94 cm	95 cm
Backrest height above seat	45cm	46 cm	45cm	46cm
Seat width	49cm	49 cm	49cm	49cm
Backrest width	47cm	48cm	47cm	48cm
Total width (5 arm base)	70cm	70cm	70cm	70cm
Seat depth	44cm	44cm	44cm	44cm
Mechanism automatic adaption to the body weight	45-120 kg	45-120 kg	45-120 kg	45-120 kg



## Options

### Footbase



5-arm / 4-arm  
aluminium,  
black 810

5-arm / 4-arm  
aluminium,  
pearl-metallic  
812

5-arm / 4-arm  
aluminium,  
alu-metallic  
813

5-arm / 4-arm  
aluminium,  
polished

### Column



Standard  
column, on  
standard seat  
height 39-51  
cm, black

Standard  
column, on  
standard seat  
height 39-51  
cm, chromium  
plated

Seat height:  
49-65cm  
52-69cm  
57-74cm  
64-81cm

### Castor



65 mm for soft  
/ hard floors

65 mm for soft  
/ hard floors  
- broken when  
loaded

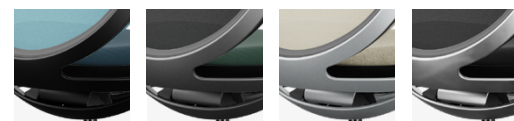
Glides /  
Glides with felt



### Footring

Chromium plated,  
centre piece  
black, Ø 50 CM

### Back and seat frame colour



Frame steel,  
black 810

Frame steel,  
pearl-metallic  
812

Frame steel,  
alu-metallic  
813

Frame steel,  
polished

### Back



Mesh

Upholstered

### Armrest



Fixed,  
aluminium  
support black  
810

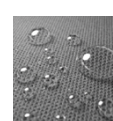
Fixed,  
aluminium  
support  
pearl-metallic  
812

Fixed,  
aluminium  
support  
alu-metallic  
813

Fixed,  
aluminium  
support  
polished

Fixed, black  
810

### Cleanguard



Back / seat  
Back / seat /  
upholstered backshell

## Service

### Partnership

We see ourselves as a partner for all your service requirements and will support you so that your office furniture investment pays off for many years to come.

### Durable

Our products are designed for sustainability. All seating furniture is designed for long-term use and longevity is at the forefront of every development process.

### Keeping it good

Professional repairs by our service technicians as well as cleaning and maintenance of the range guarantee that our products retain their value. It is important to us that our products remain in use for many years. That is why we keep a stock of original spare parts with rapid availability.

Unfortunately, we cannot control or promise how the products will be used when first out of our hands, but we will do our best to help you care for your product to live forever.

[Click to download.](#)

## User guide



Discover more from Giroflex,  
including the iconic giroflex 64,  
the best-selling ergonomic  
Swiss classic.

Click on the selected chair  
to learn more.



giroflex 353  
conference chair

giroflex 68

giroflex 40

giroflex 60

giroflex 353  
swivel chair

giroflex 434

giroflex 161

giroflex 10

giroflex 313

giroflex 64



Flokk HQ  
Drammensveien 145,  
0277 Oslo, Norway

+47 22 59 59 00  
info-no@flokk.com

[flokk.com/giroflex](https://flokk.com/giroflex)



Go to giroflex 313  
online configurator

**giroflex**  
designed to work