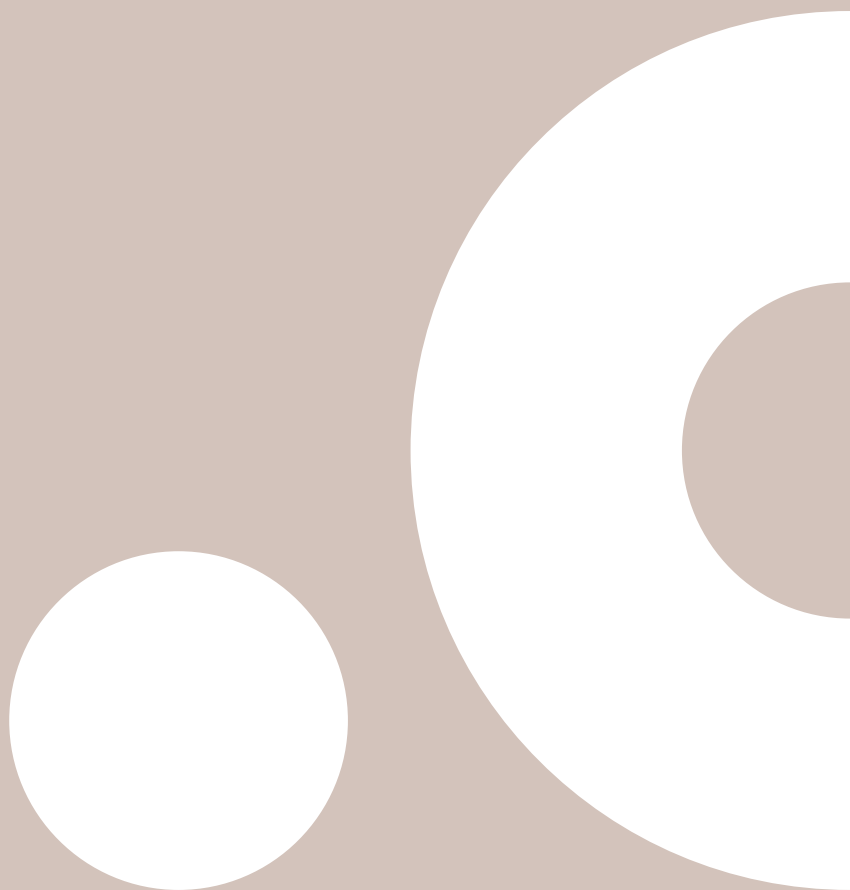


Flokk

2023



**FABRICS
& COLOURS**
FLOKK CORE COLLECTION

Flokk Core Collection

TECHNICAL SPECIFICATIONS

	CURA by Gabriel	XTREME by Camira	SELECT by Gabriel	CAPTURE by Gabriel	FOCUS by Gabriel	FOCUS MELANGE by Gabriel	OCEANIC by Camira	PUXX 1 by Oniro	ILLUSION by Nevotex	STEELCUT TRIO 3 by Kvadrat	STEELCUT 3 by Kvadrat	PALOMA SOFT by Wollsdorf	ELMOSOFT by Elmo
PRICE GROUP	1	1	2	3	3	3	3	3	4	4	4	6	7
COMPOSITION (%)													
New Zealand Wool	-	-	85	85	100	100	-	-	-	90	90	-	-
Polyurethane	-	-	-	-	-	-	-	100 ³⁾	100 ³⁾	-	-	-	-
Polyamide	-	-	15	15	-	-	-	-	-	10	10	-	-
Polyester	2	-	-	-	-	-	-	64 ⁴⁾	-	-	-	-	-
Post-consumer recycled polyester	98	100	-	-	-	-	100	-	-	-	-	-	-
Cotton (backing)	-	-	-	-	-	-	-	35	100	-	-	-	-
Cattle hides	-	-	-	-	-	-	-	-	-	-	-	100	100
ENVIRONMENTAL FACTS													
EU Ecolabel	◆	◆	◆	◆	◆	◆	◆	-	-	◆	◆	-	-
OEKO-TEX® STANDARD 100	◆	◆	◆	◆	◆	◆	◆	◆	◆	-	-	-	-
Möbelfakta	◆	◆	◆	◆	◆	◆	◆	◆	◆	◆	◆	-	◆
GREENGUARD Gold	-	-	-	-	-	-	-	-	-	◆	◆	-	-
Indoor Advantage Gold	-	◆	-	-	-	-	◆	-	-	-	-	-	-
ISO 14001 certified (company)	◆	◆	◆	◆	◆	◆	◆	◆	◆	◆	◆	◆	◆
100% free of heavy metals	◆	◆	◆	◆	◆	◆	◆	◆	◆	◆	◆	◆	◆
Chrome-free leather tanning	-	-	-	-	-	-	-	-	-	-	-	◆	◆
Blue Angel RAL-U2 148	-	-	-	-	-	-	-	-	-	-	-	◆	-
ECO2L	-	-	-	-	-	-	-	-	-	-	-	◆	-
Biocompatibility ISO 10993-10:2014	-	-	-	-	-	-	-	-	◆	-	-	-	-
FLAMMABILITY													
EN 1021 - 1&2 (cigarette & match)	◆	◆	◆	◆	◆	◆	◆	◆	◆	◆	◆	◆	◆
BS 7176 Low Hazard	-	◆	-	-	-	-	◆	-	-	◆	◆	-	-
BS 7176 Medium Hazard	-	◆	-	-	-	-	◆ ²⁾	-	-	-	-	-	-
BS 5852 Part 1 0,1 - (cigarette & match)	-	-	◆	◆	◆	◆	-	-	-	◆	◆	-	-
BS 5852 Crib 5	-	◆	◆ ¹⁾	◆ ^{1&2)}	-	-	◆ ²⁾	◆ ¹⁾	◆ ¹⁾	◆ ^{1&2)}	◆ ^{1&2)}	◆	◆
DIN 4102 B1	-	◆	-	-	-	-	-	-	◆	-	-	-	◆
NF D 60-013	-	◆	-	-	-	-	-	-	-	◆	◆	-	-
CA TB 117-2013	◆	◆	◆	◆	◆	◆	◆	◆	◆	◆	◆	◆	◆
IMO MSC.307 (88) Annex 1 Part 8	-	-	◆	-	-	-	-	-	-	-	-	-	-
IMO 2010 FTP Code Part 8	-	-	-	-	-	-	-	◆	◆	◆	◆	-	◆
FASTNESS TO RUBBING													
Dry	4 - 5	4	4 - 5	4 - 5	4 - 5	4 - 5	4	4 - 5	4 - 5	4 - 5	4 - 5	1000/4	2000/4
Wet	4 - 5	4	4 - 5	4 - 5	4 - 5	4 - 5	4	4 - 5	4 - 5	3 - 5	3 - 5	80/4	80/4
OTHER													
Weight (g/m ²) ± 5%	300	310	365	340	470	470	497	520	595	770	825	-	700
Width (cm)	140	140	140	140	140	140	140	145	140	140	140	-	-
Abrasion (Martindale)	100 000	100 000	200 000	200 000	100 000	100 000	100 000	300 000 ⁵⁾	500 000 ⁶⁾	100 000	100 000	-	-
Pilling	4 - 5	4	4	4 - 5	4	4	4	-	-	4	3 - 4	-	-
Light fastness	5 - 8	6	5 - 8	5 - 7	5 - 7	5 - 7	5	6 - 7	7	5 - 7	6	6	6

- 1) Pass with CMHR foam
- 2) Pass with flame retardant treatment
- 3) Surface
- 4) Backing
- 5) EN 530-2 (2010)
- 6) EN 5470-2 (2003)

MAINTENANCE
To be vacuumed with a furniture brush or wiped with a clean, white cloth or sponge slightly dampened with clean lukewarm water.
For more details see Flokk Care & Maintenance Guide:
flokk.com/en/norway/support/care-and-maintenance

FOR COMPLETE SPECIFICATION AND/OR CLEANING & MAINTENANCE GUIDANCE SEE OUR SUPPLIERS WEBSITES:
camirafabrics.com
elmoleather.com
gabriel.dk
kvadrat.dk
nevotex.com
oniro.nl
wollsdorf.com

Cura (Gabriel)

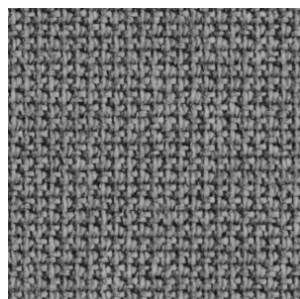
Post-consumer recycled polyester
– two-coloured – durable

PG 1

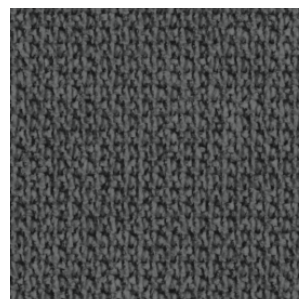
Cura is a two-coloured fabric made from 98% post-consumer recycled polyester. It has a matt, slightly irregular and natural-looking texture where the dark, underlying grey fibers create a discreet yet vibrant melange effect. High durability and stretchability and its soft, voluminous touch make Cura suitable for both office and lounge furniture.



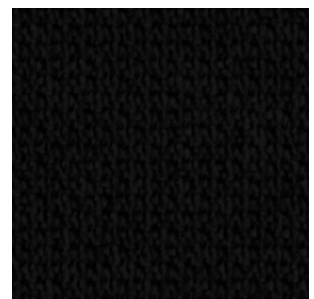
CU66165



CU60110



CU60109



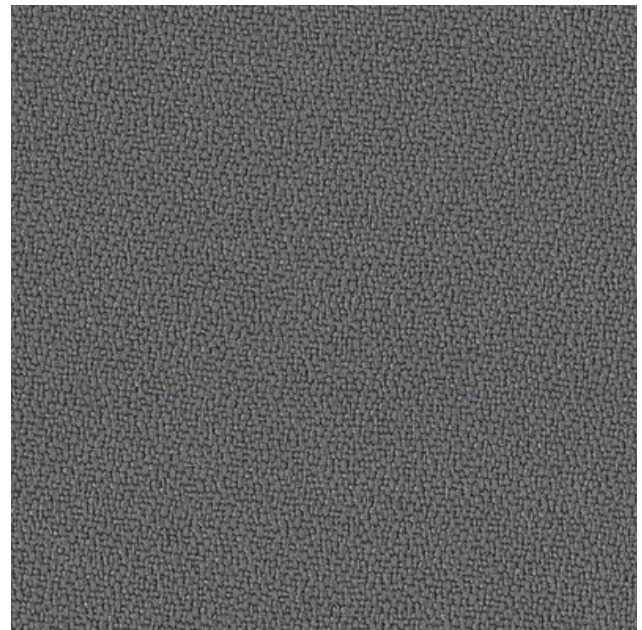
CU60999

Xtreme (Camira)

100% post-consumer recycled polyester
– crepe structure – stretchy – durable

PG 1

Xtreme is a crepe fabric made from 100% post-consumer recycled polyester that features exceptional Euro flammability performance. Extra stretch and structure gives an irregular, shiny finish.



EXR081



EXR145



EXR009

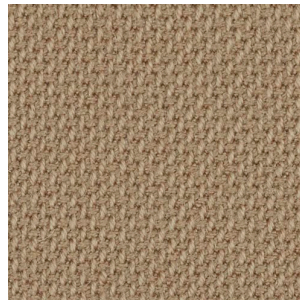
Select (Gabriel)

New Zealand wool

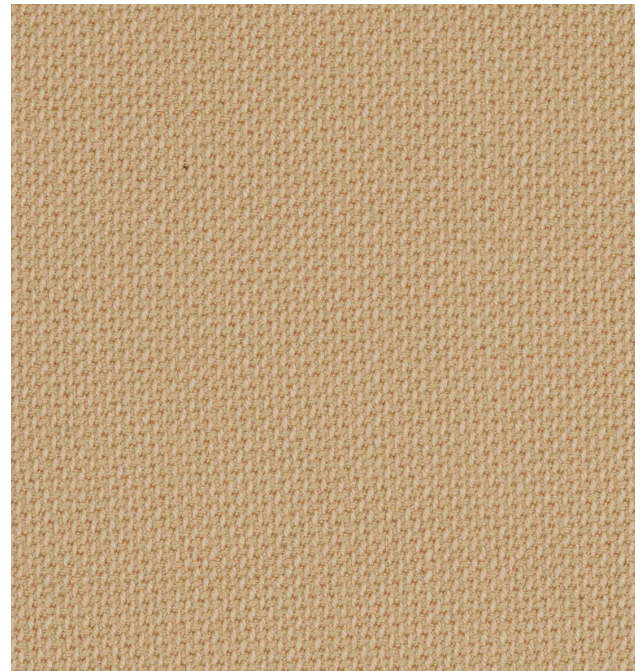
– diagonal relief structure – soft – durable

PG 2

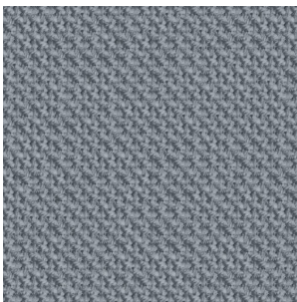
Select is a classic woolen fabric with a tightly woven relief structure, combining excellent softness, stretch and durability. Its rich texture with the interplay of light and shadow add depth in all the colours in the palette.



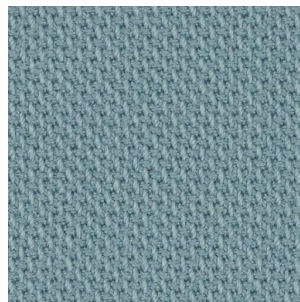
SC61184



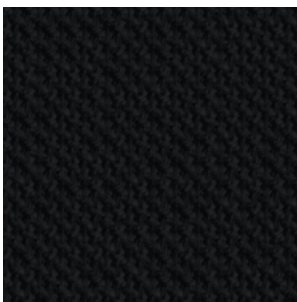
SC62097



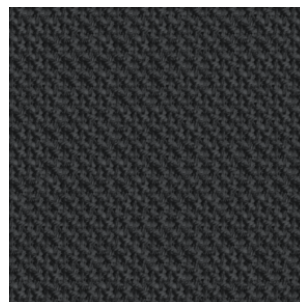
SC60139



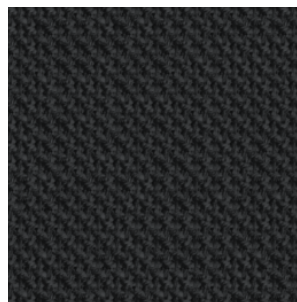
SC67098



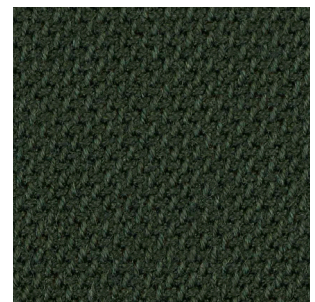
SC60999



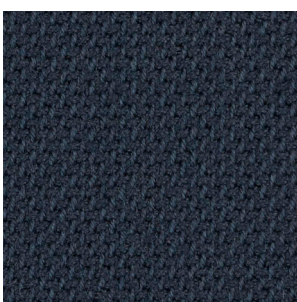
SC60134



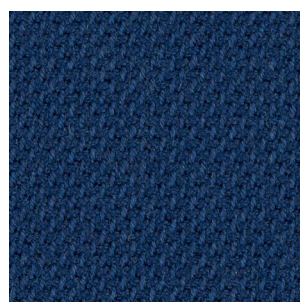
SC60051



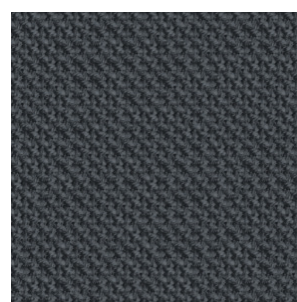
SC68209



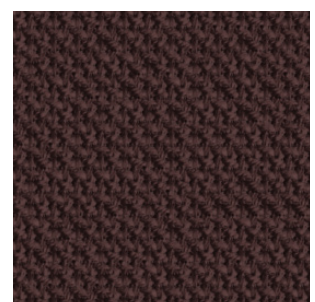
SC66194



SC66071



SC60003



SC61186

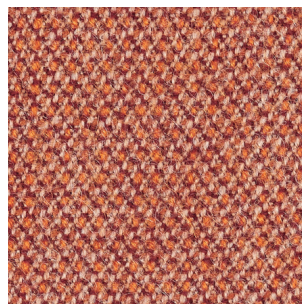
Capture (Gabriel)

New Zealand wool

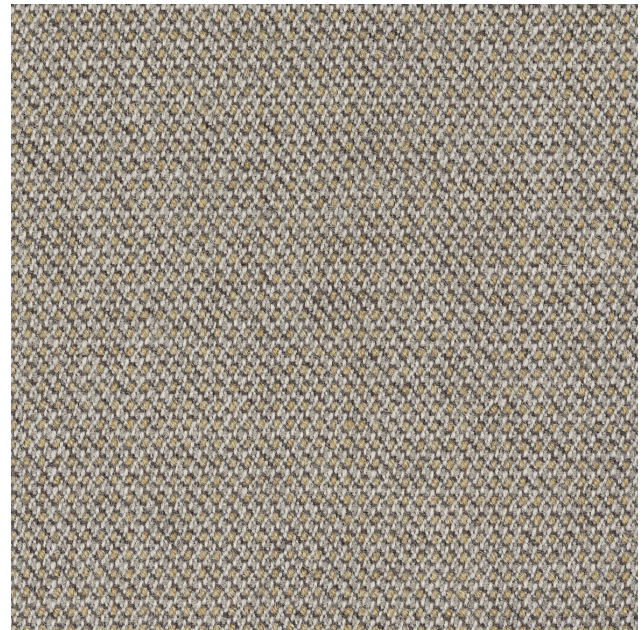
– lightly felted – soft – durable

PG 3

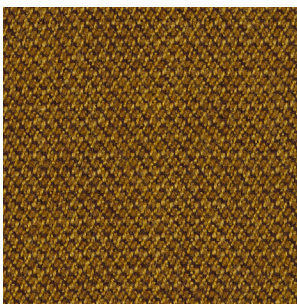
Capture is a lightly felted and multi-coloured wool fabric combining softness, stretch and strength. It fuses light and dark colours to a refined melange pattern in subtle nuances, which add richness and depth to the design.



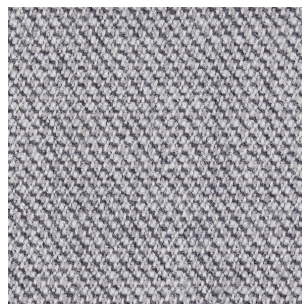
CPT4301



CPT5103



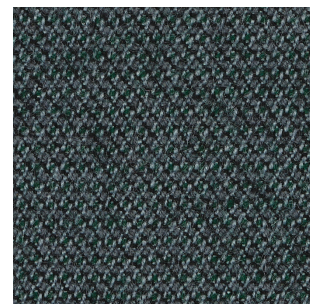
CPT6401



CPT4102



CPT4401



CPT6601



CPT4601



CPT5101



CPT5501



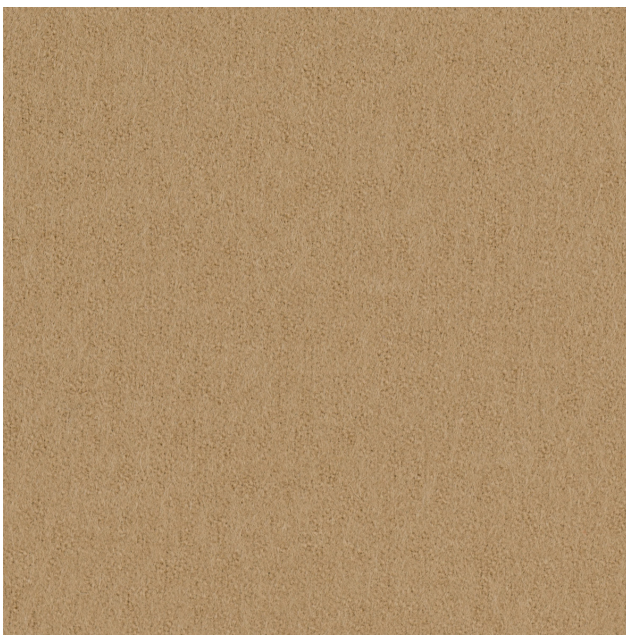
CPT6001

Focus (Gabriel)

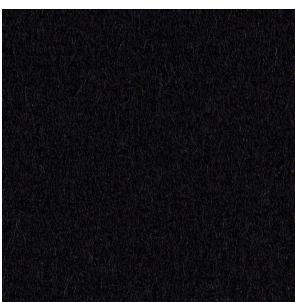
New Zealand worsted wool
– fine structure – ultra-soft – clean,
contemporary colours – durable

PG 3

Focus is a woven felt fabric made of 100% long-staple worsted wool. It has an ultra soft and satiny touch combined with high strength obtained by use of highquality worsted wool yarn and careful production processes. In addition to high durability, the fabric does not pill and will remain attractive over time regardless of wear and tear.



FC61039



FC60999



FC61042



FC61036

Focus Melange (Gabriel) PG 3

New Zealand worsted wool

- fine structure - ultra-soft - natural mélangé effect
- durable

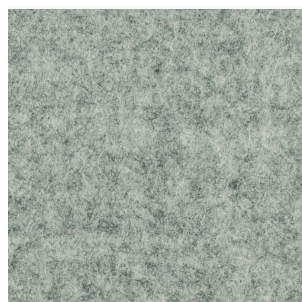
Focus Melange is a woven felt fabric made of 100% long-staple worsted wool. It has an ultra soft and satiny touch combined with high strength obtained by use of high-quality worsted wool yarn and careful production processes. In addition to high durability, the fabric does not pill and will remain attractive over time regardless of wear and tear. The equal thickness between the warp and weft yarn give a harmonious and symmetric melange colour expression.



FCM68247



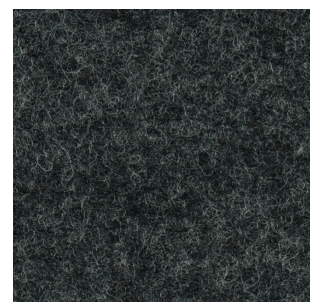
FCM61240



FCM60310



FCM60308



FCM60900

Steelcut 3 (Kvadrat)

New Zealand worsted wool

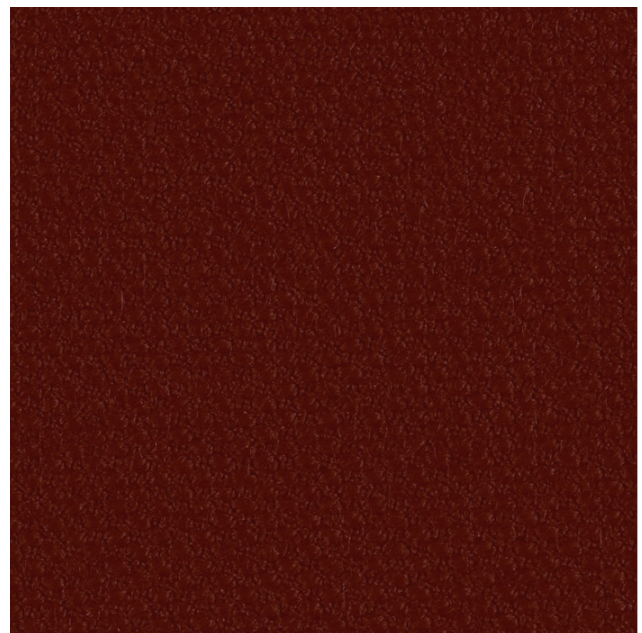
- semi-plain structure – tricoloured 3D effect
- durable

PG 4

Steelcut 3 is a unicoloured strong worsted wool and polyamide woven fabric, combining durability, soft touch and colour depth. The construction create a threedimensional surface resembling small pyramids or steel points. Despite its complex weaving technique, it has a simple and precise expression.



STT190



STT655

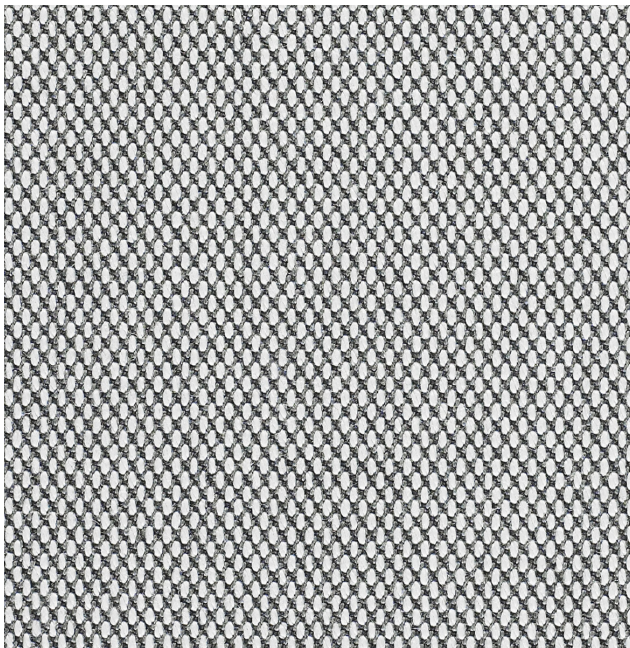
Steelcut Trio 3 (Kvadrat)

PG 4

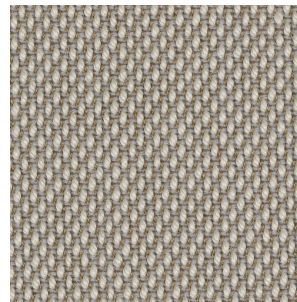
New wool worsted

- semi-plain structure - tricoloured 3D effect
- durable

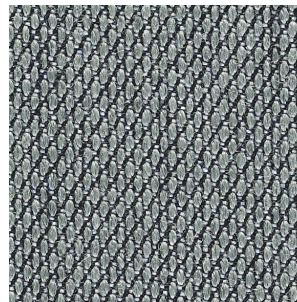
Steelcut Trio 3 is a strong worsted wool and polyamide woven fabric, made with three different coloured yarns. The colours and the special weave create a three-dimensional surface where the colours seem to change depending on the angle of perspective.



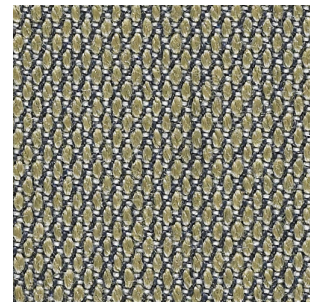
STT133



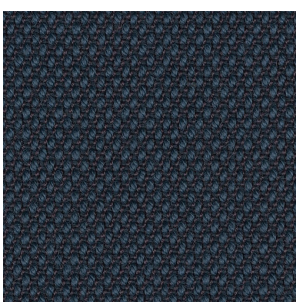
STT213



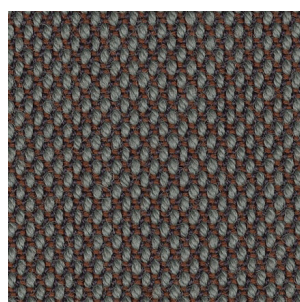
STT153



STT253



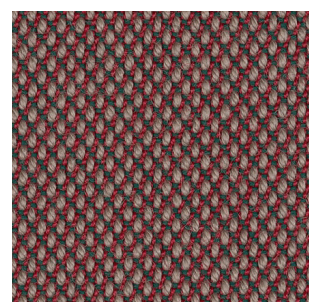
STT796



STT276



STT383



STT645

Please note that colours shown in these illustrations may vary from the actual colours.

Oceanic (Camira)

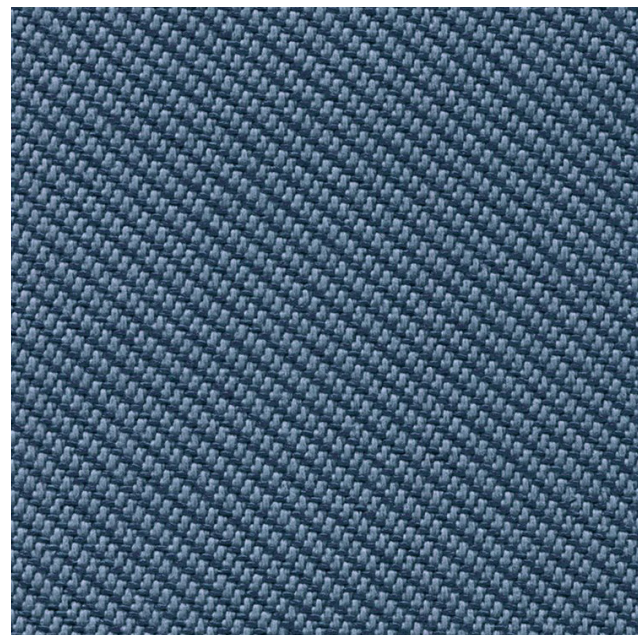
100% post-consumer recycled polyester
– diagonal relief structure – durable

PG 3

Oceanic is made from 100 % post-consumer recycled polyester yarn where 90% are created from post-consumer plastic bottles diverted from landfill and 10% is upcycled marine plastic (from marine litter). It is a fabric born out of the SEAQUAL Initiative designed to combat marine plastic pollution and achieve a waste free environment. Oceanic has a two coloured diagonal structure with a matte surface and soft touch.



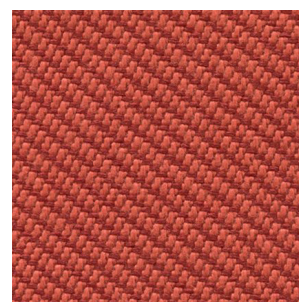
OCI014



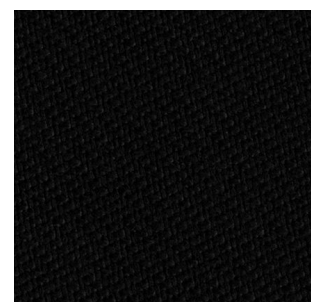
OCI011



OCI008



OCI012



OCI001

Paloma Soft (Wollsdorf)

PG 6

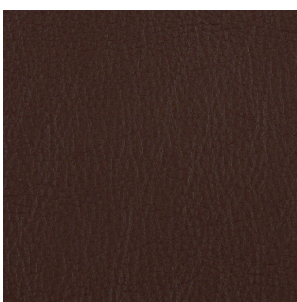
Semi-aniline leather

– chrome-free – soft – high durability

High quality semi-aniline leather. All our standard colours from Paloma have a special finish adding a particular softness to the leather. Excellent friction and breathing properties. The surface may feature small scars and marks resulting from insect bites etc. These are proof of the natural origin of the product and are part of its character.



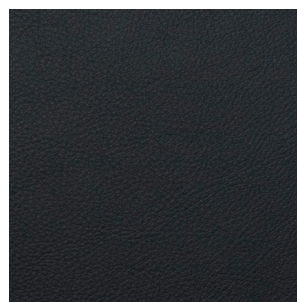
ATG55115



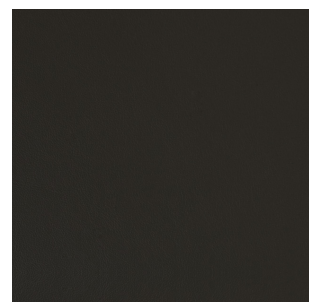
ATG55130



ATG55206



ATG55185



ATG56100

Please note that colours shown in these illustrations may vary from the actual colours.

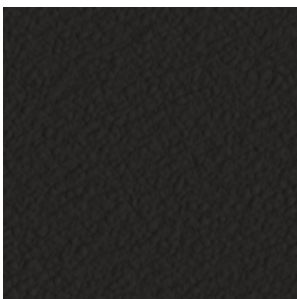
Elmosoft (Elmo)

Supreme semi-aniline leather
– chrome-free – soft – high durability

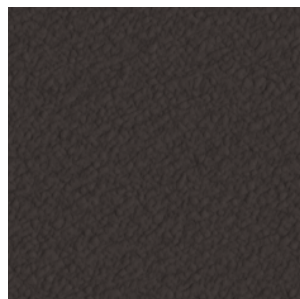
PG 7

Elmosoft is a chrome free supreme quality semi-aniline grain leather from Scandinavian cattle. It is soft and pliable with an outstanding comfort and durability.

Visible insect-bites and scars from healed wounds add to the authentic quality and character of the leather.



EL99999



EL93068



EL33004

PUxx 1 (Oniro)

100% Polyurethane

– soft – high durability

PG 3

PUxx 1 is a polyurethane leather with a soft touch that is easy to clean and disinfect. It is 100% waterproof, antibacterial & antifungal and resistant towards blood and urine. Being strong, durable and easy to maintain make it well suited for environments with high cleaning requirements.



PU215816

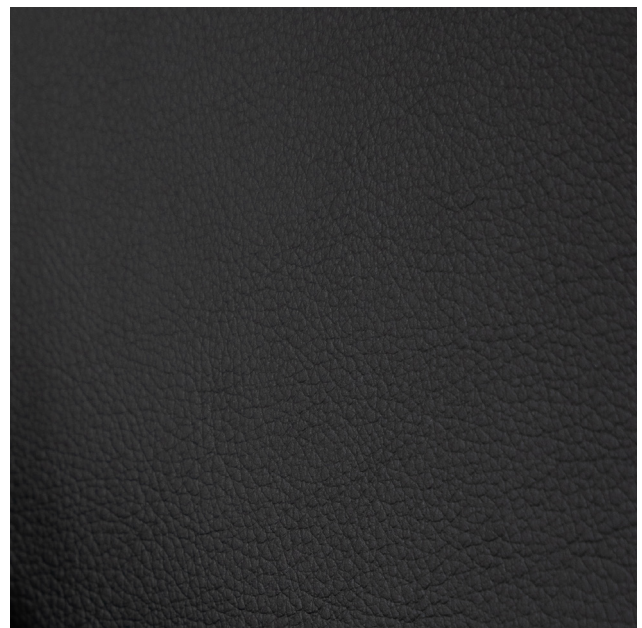
Illusion (Nevotex)

100% Polyurethane

– soft – high durability

PG 4

Illusion is a resistant easy cleanable synthetic leather with a polyurethane (PU) coating on a cotton backing. It has a semi matte surface with a softly grained structure and is recommended to use in environments with high cleaning demands.



ILU110

flokk

