

# giroflex 40

Designed to work



09-2023

Inspiration Palettes

**giroflex**  
by Flokk

# giroflex 40

## Textiles and colour moods

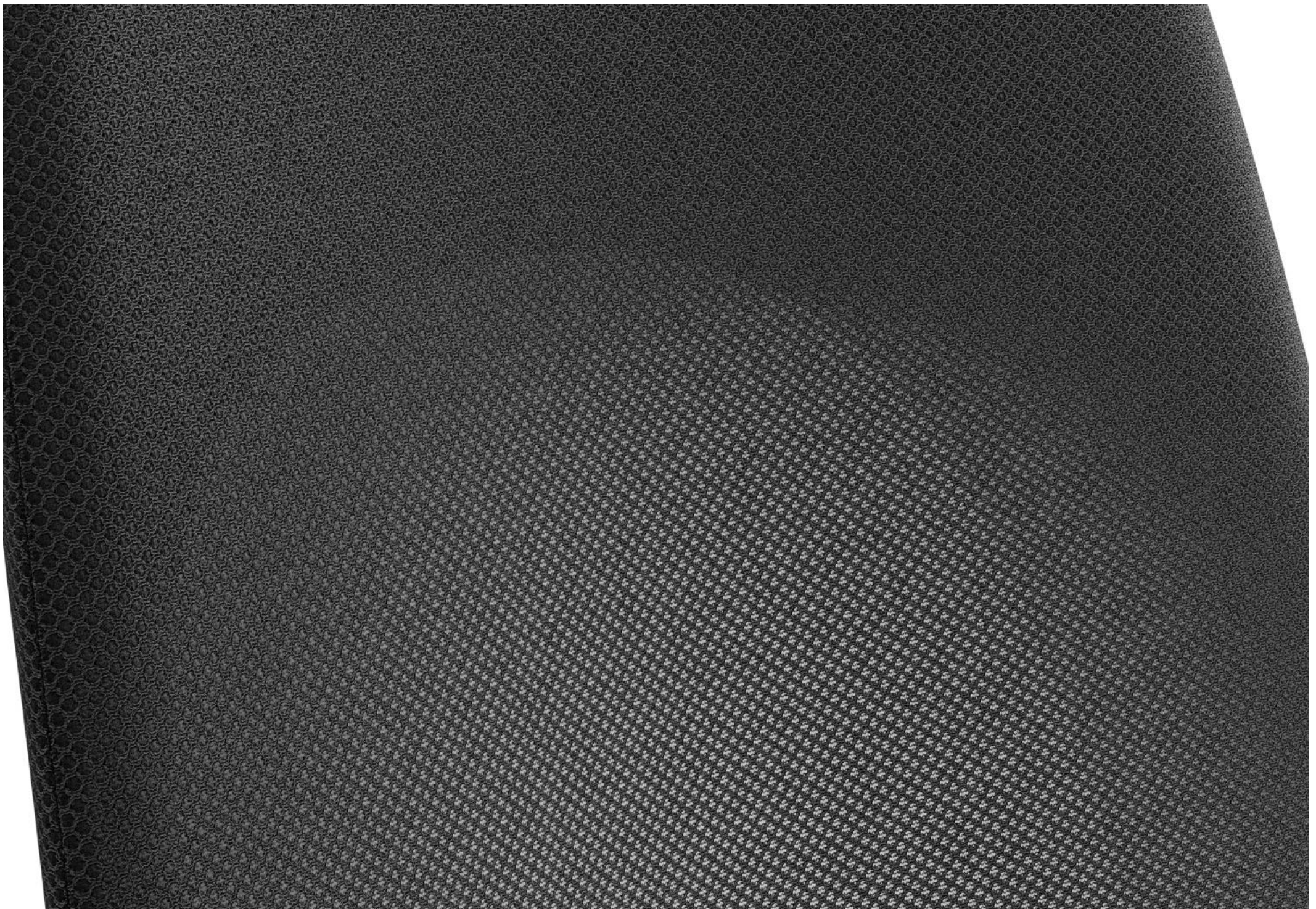
To highlight the versatile possibilities of giroflex 40, we have curated a selection of textiles motivated by the theme of 'playful inspiration.' The selected textiles and colours emphasize the chair's ability to fit into a variety of environments.

The choice of Runner Mesh forms the textural foundation of the backrest, with a semi-transparent appearance that adds a sense of lightness, all the while accentuating the airy characteristic of Giroflex chairs. The option of the headrest gave us the opportunity in pairing different colour combinations or finish with a quality touch leather.

The colour choices were informed by Suisse heritage of design and architecture. Taking inspiration and reference from Le Corbusier to create mature and elegant palettes that range from subtle tones to energetic contrasts of solid colours. The curated choices were aimed to create option that complement different kinds of works spaces. Harmonic tone combinations based in warm neutrals and greys work well for focused personal work areas. Alternatively colours with more contrast, sport an edgy direction made to suit more open and energetic work landscapes.

Pernille Jensen Stolze  
Textile Designer  
Flokke Design Team

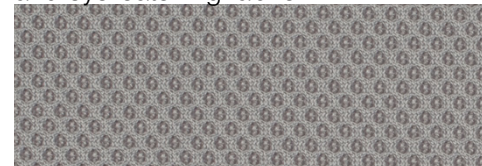




# The fabrics selected to inspire

## Runner

With its semi-transparent quality and soft 3D appearance Runner is a highly visual and eye-catching fabric.



Grey  
Runner 60011

## Select

Select is a classic woollen upholstery fabric with superior durability and excellent stretch. It adds an extra dimension of functionality and classic elegance to all kinds of furniture and is highly suitable for heavy use environments.

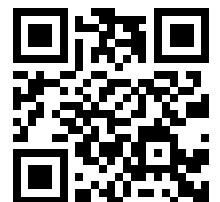


Light Grey  
SC60139

## Explore a wider range of fabrics

Interested in more fabrics? Giroflex offer a wide range of fabrics. Our configurator is designed to help you play, compose, and find the materials, colours and finishes that work for you.

Go to giroflex 40  
Fabric configurator



## Timeless classic configurations

Simple, Clear and distinct colour choices of Red, Black, Beige and Glacier blue were chosen as abstract reflections of the Swiss landscape, which inspire us. These colour blocks also represent a timeless rationality that can translate the wilderness into an expression that is seemingly uncomplicated, universal, and orderly.



# Black is not only black

Black can be perceived as boring, but it can also be timeless and elegant.

There are warm and cold tones present in all shades of black. Shiny or matt texture in combination with light temperatures all contribute to different expressions of black.

You just need to look in close and select your preferred quality and textile combination. A woollen black, compared to a synthetic makes a significant difference both in touch and look. Texture and shiny react differently to light, resulting in multiple tones of black.

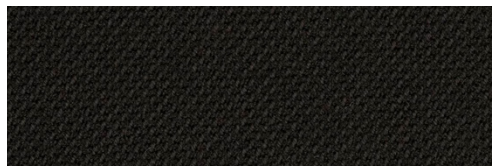


Mesh back colour



Black  
Runner 60999

Seat colour



Select  
SC60999

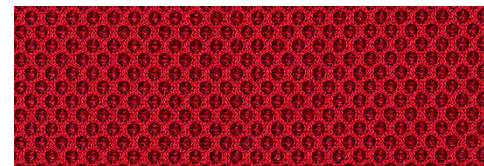
# Empowering reds

Red symbolizes the energetic pop of our Swiss heritage, the heart of Giroflex.

Three matching red tones of the seat and backrest along with the headrest combine cohesively yet maintaining their own unique characteristics. Adding a boost to the office that is visible and energetic, uncompromising in precision.



Mesh back colour



Red  
Runner 64089

Seat colour



Select  
SC64089

## Natural tones of wellness

The lightness of beige creates a serene and calm mood. Bringing in cues of nature, it contains the ability to melt into and blend in with surrounding colours, adding lightness and a feeling of wellbeing to the environment it sits in.

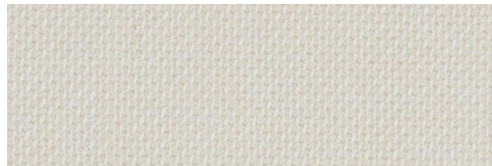


Mesh back colour



Light beige  
Runner 61128

Seat colour



Select  
SC60005

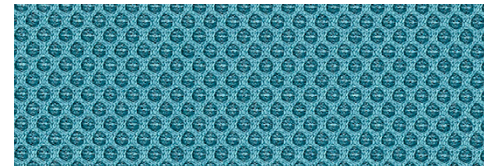
## Blue clarify of mind

Glazier blue creates a spirit of clarity along with a freshness that comes with the reference of crisp glaziers in Switzerland.

This Tone in tone choice uses the turquoise colour of mesh as a colour to be energised by.

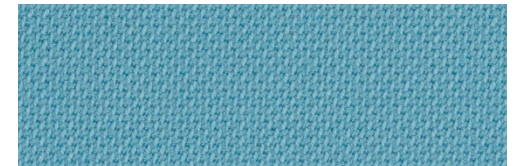


Mesh back colour



Turquoise  
Runner 66063

Seat colour



Select  
SC66191

## Eclectic combos

With a heritage that is influenced by the distinct cultures which surround it, drawing inspiration from our surroundings is a characteristic that should be embraced.

We should not be afraid of colours and the opportunity to combine them into new expressions. We have created three palettes and themes to represent how accessible and diverse this perspective can be.

The Timeless and Sophisticated

The Light-hearted Urbanist

The Mindful nature seeker





# The timeless sophisticated

Sophisticated - Mature colour combos drawn from architectural inspiration.

Playing with textures, temperatures, and composition. Together they create harmonious combinations with a sense of subtlety and contrast.

As with architectural element that layer together to construct a building, the textiles different structures and colours interplay to affect each other. The transparency of the mesh used in the backrest expresses an airy lightness that is combined with the opaque seat defined by its detailed texture, which is then finished with a spot of leather for the headrest.



Messeplatz, Basel  
Switzerland

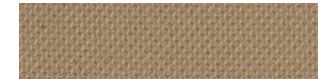


Mesh back colour



Light Beige  
Runner RUN61128

Seat colour



Light Brown  
Select SC61184

Headrest colour



LE125

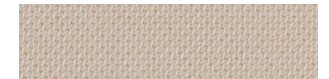


Mesh back colour



Grey  
Runner RUN60011

Seat colour



Light Beige  
Select SC61188

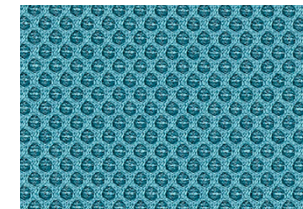
Headrest colour



LE122

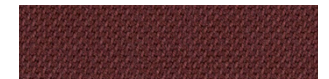


Mesh back colour



Turquoise  
Runner RUN66063

Seat colour



Chestnut  
Select SC61186

Headrest colour



LE124

# The light hearted urbanist

Young spirited – Inspired by urban culture that fuses a playful and sporty outlook on daily life.

Colourful contrasts and dynamic combos were chosen, to emphasis a lifestyle of movement.

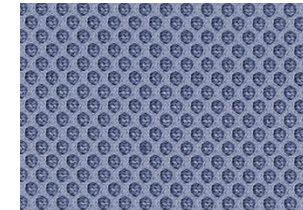
Building off a strong and stable core, the textile foundation is seen in the opaque seat texture. Which is uplifted with the use of mesh for both the backrest and headrest to not only lighten but portray a sense of agility.



Cool, fresh - young spirited.  
Inspired by urban culture and sport.

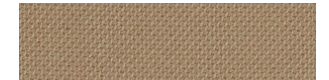


Mesh back colour



Purple  
Runner RUN65078

Seat colour



Light Brown  
Select SC61184

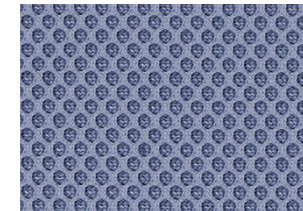
Headrest colour



RUN61128



Mesh back colour



Purple  
Runner RUN65078

Seat colour



Glacier Blue  
Select SC67098

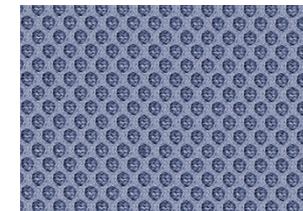
Headrest colour



RUN60011

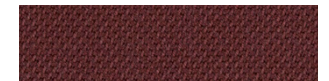


Mesh back colour



Purple  
Runner RUN65078

Seat colour



Chestnut  
Select SC61186

Headrest colour



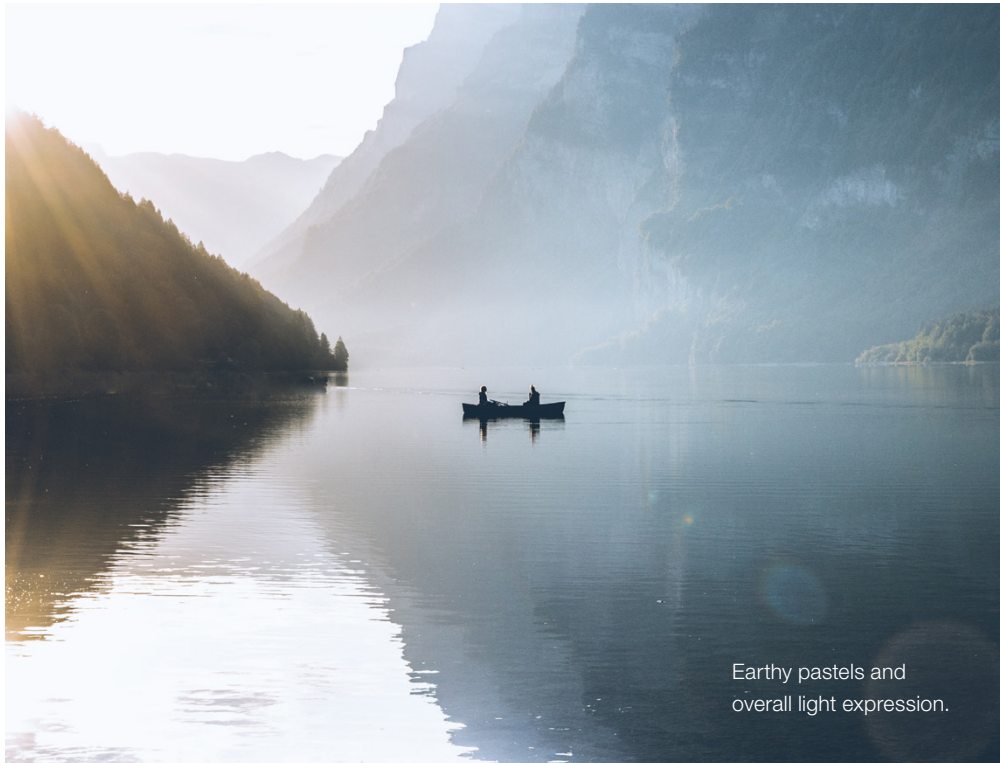
RUN60011

# Mindful nature seeker

Conscious - Respectful Eco minded individual who takes inspiration from nature.

In combination of the tactile seat surface to the translucent mesh backrest, combining harmonic contrasts with soft pastels to reflect lightness and generate an overall calm expression.

The aim is to capture a clear and calm expression that translates the more serene moments of being in nature.



Earthy pastels and overall light expression.

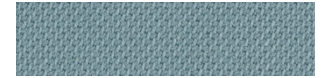


Mesh back colour



Light Beige  
Runner RUN61128

Seat colour



Glacier Blue  
Select SC67098

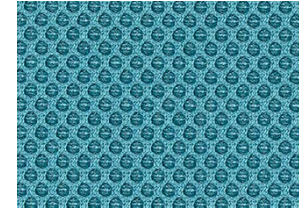
Headrest colour



LE126



Mesh back colour



Turquoise  
Runner RUN66063

Seat colour



Turquoise  
Step SE67072

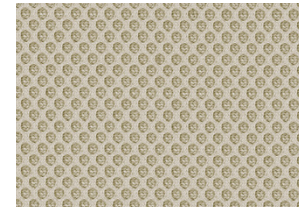
Headrest colour



LE125



Mesh back colour



Light Beige  
Runner RUN61128

Seat colour



Turquoise  
Step SE67072

## Swissness

Centred in the middle of Europe, Switzerland is a natural intersection of cultures. A place that fostered perspectives from architecture to graphic communication, that have played a substantial role in defining the modern landscape of design.

With an enduring respect for the outdoors, driven by advancing industries in combination of a rational perspective, our Swiss heritage has encouraged an active connection between good design and good engineering. We celebrate these tendencies towards precision and function in the design and reach of all Giroflex products.





Flokk HQ  
Drammensveien 145,  
0277 Oslo, Norway

+47 22 59 59 00  
info@flokk.com

[flokk.com/global/giroflex](https://flokk.com/global/giroflex)



Download inspirational  
configurations for  
giroflex 40

***giroflex***  
by Flokk